

NOTES: (UNLESS OTHERWISE SPECIFIED)

1. BREAK ALL SHARP EDGES.
2. FILLETS: R .015 MAX.

REV	DATE	DRAWN BY	CHECKED	DCC	DCN/DESCRIPTION
A	2/13/98	J. Hazel			E980016/INITIAL RELEASE

A

B

C

D

A

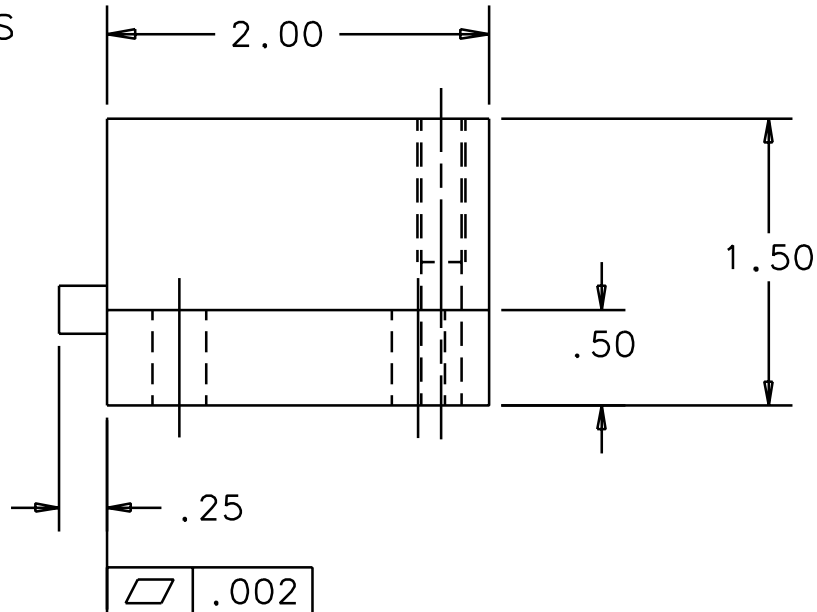
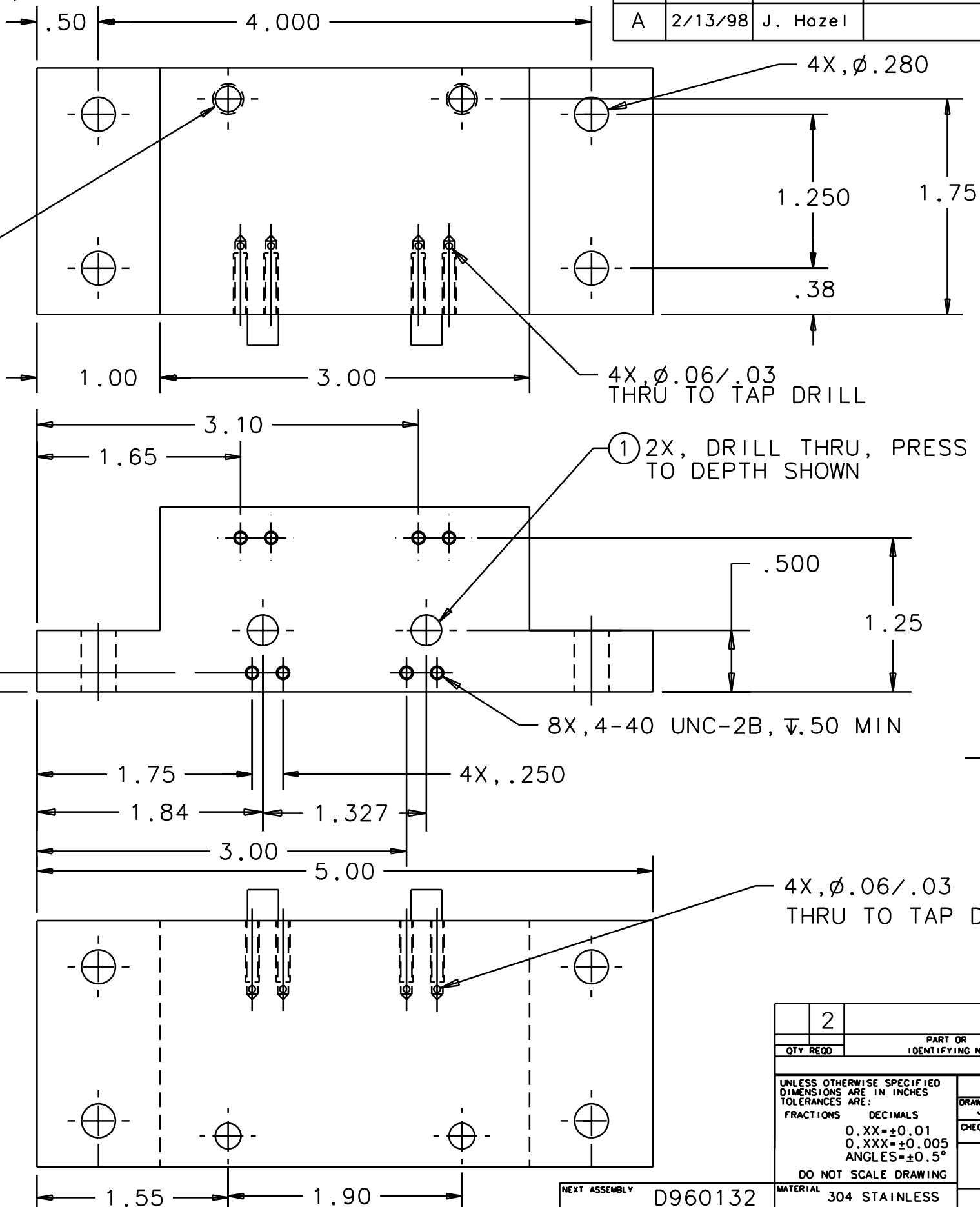
B

C

D

2x, 1/4-20, TAP  $\nabla$  .75,  
BORE THROUGH

.156



2		$\phi$ .250* DOWEL PIN, .50* MIN LONG	STAINLESS STEEL	1
QTY REQD	PART OR IDENTIFYING NO	NOMENCLATURE OR DESCRIPTION	MATERIAL SPECIFICATION	ITEM NO
PARTS LIST				
UNLESS OTHERWISE SPECIFIED DIMENSIONS ARE IN INCHES TOLERANCES ARE:		APPROVALS	DATE	<b>LIGO</b> CALIFORNIA INSTITUTE OF TECHNOLOGY MASSACHUSETTS INSTITUTE OF TECHNOLOGY TITLE LOS SUSPENSION BLOCK Dwg NO. D960144 REV A
FRACTIONS    DECIMALS 0.XX=±0.01 0.XXX=±0.005 ANGLES=±0.5° DO NOT SCALE DRAWING		DRAWN J. Hazel CHECKED	4/96	
FILE LOCATION	NEXT ASSEMBLY	MATERIAL	FINISH	SCALE
/home/dcc/docs/D960144.pdf	D960132	304 STAINLESS	64	1/1
			SHEET	1 OF 1

1

2

3

4