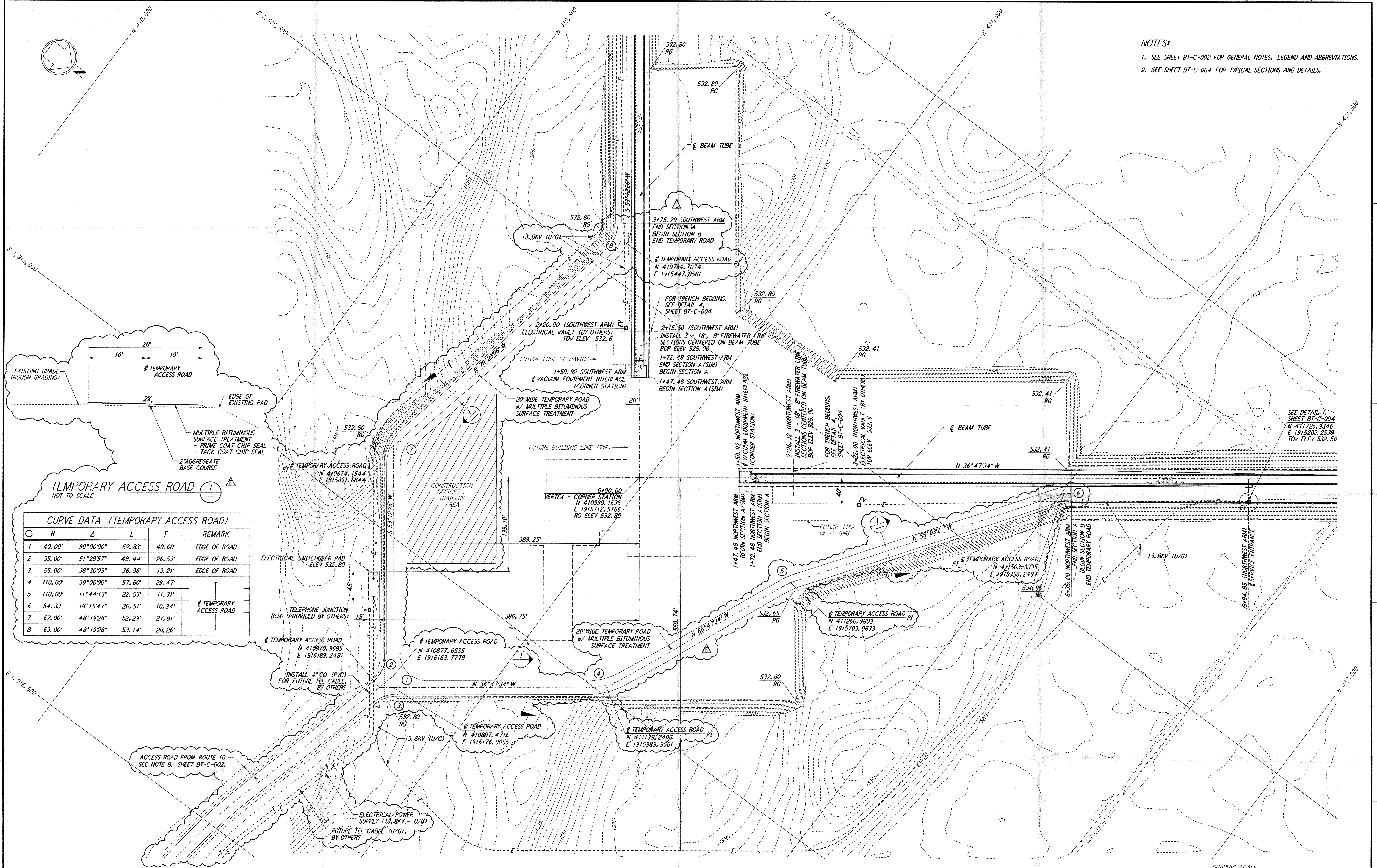


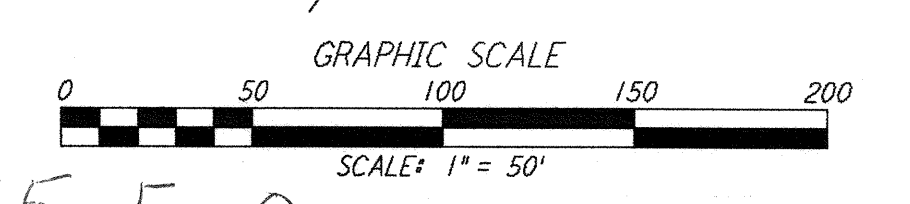
NOTES:
 1. SEE SHEET BT-C-002 FOR GENERAL NOTES, LEGEND AND ABBREVIATIONS.
 2. SEE SHEET BT-C-004 FOR TYPICAL SECTIONS AND DETAILS.

This document and the design it covers are the property of PARSONS. They are loaned only with the borrower's expressed written agreement that they will not be reproduced, copied, loaned, exhibited, or used in any other way, except by written consent from PARSONS to the borrower.



CURVE DATA (TEMPORARY ACCESS ROAD)
 NOT TO SCALE

Curve No.	R	Δ	L	T	REMARK
1	40.00'	90°00'00"	62.83'	40.00'	EDGE OF ROAD
2	55.00'	51°29'57"	49.44'	26.53'	EDGE OF ROAD
3	55.00'	38°30'03"	36.96'	19.21'	EDGE OF ROAD
4	110.00'	30°00'00"	57.60'	29.47'	TEMPORARY ACCESS ROAD
5	110.00'	11°44'13"	22.53'	11.31'	
6	64.33'	18°15'47"	20.51'	10.34'	TEMPORARY ACCESS ROAD
7	62.00'	48°19'28"	52.29'	27.81'	
8	63.00'	48°19'28"	53.14'	28.26'	



NO.	DATE	BY	CHKD	ENGR	PROJ	DESCRIPTION
E	12/18/95	WRB				BID AMENDMENT 1
D	11/21/95	WRB				ISSUED FOR BID
C	11/6/95	WRB				FINAL DESIGN REVIEW
B	10/3/95	WRB				DRAFT FINAL DESIGN REPORT
A	8/14/95	WRB				PRELIMINARY DESIGN REPORT

DRAWN	WRB
CHECKED	
ENGINEER	
PROJ	

PARSONS
 100 WEST WALNUT STREET
 PASADENA, CALIFORNIA

LIGO
 CALIFORNIA INSTITUTE OF TECHNOLOGY
 MASSACHUSETTS INSTITUTE OF TECHNOLOGY

D960165-E-0
 LASER INTERFEROMETER
 GRAVITATIONAL-WAVE OBSERVATORY
 BTE SITWORK & FABRICATION - HANFORD, WA
 CORNER STATION
 PLAN
 SCALE: 1" = 50'
 CONTRACT NUMBER: PPI50969
 PROJECT NUMBER: 8094
BT-C-005

5
4
3
2
E
D
C
B
A
 5
4
3
2
1
 LIGOBTF3.BDR