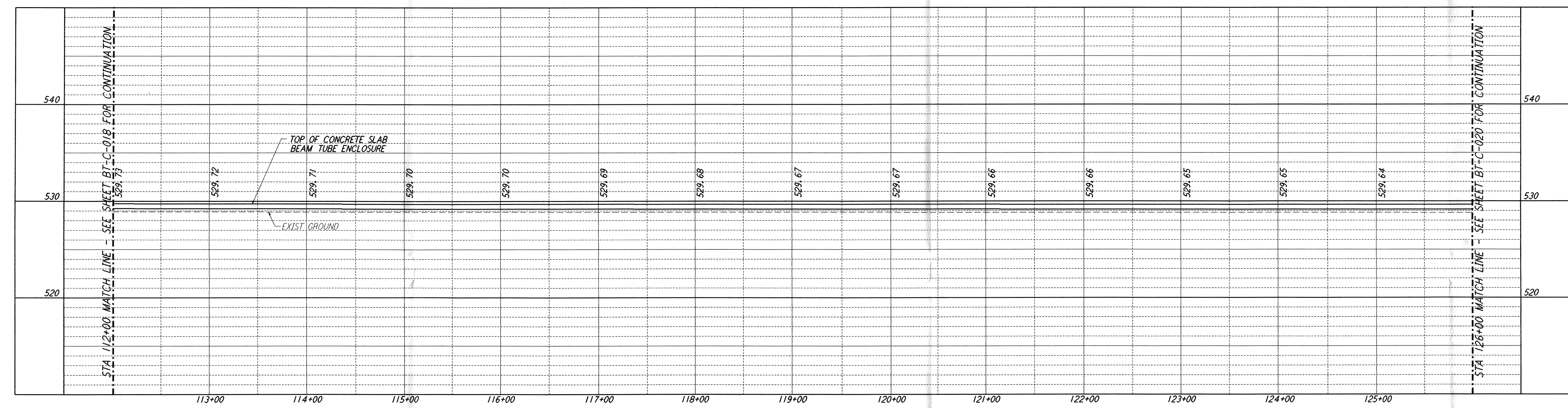
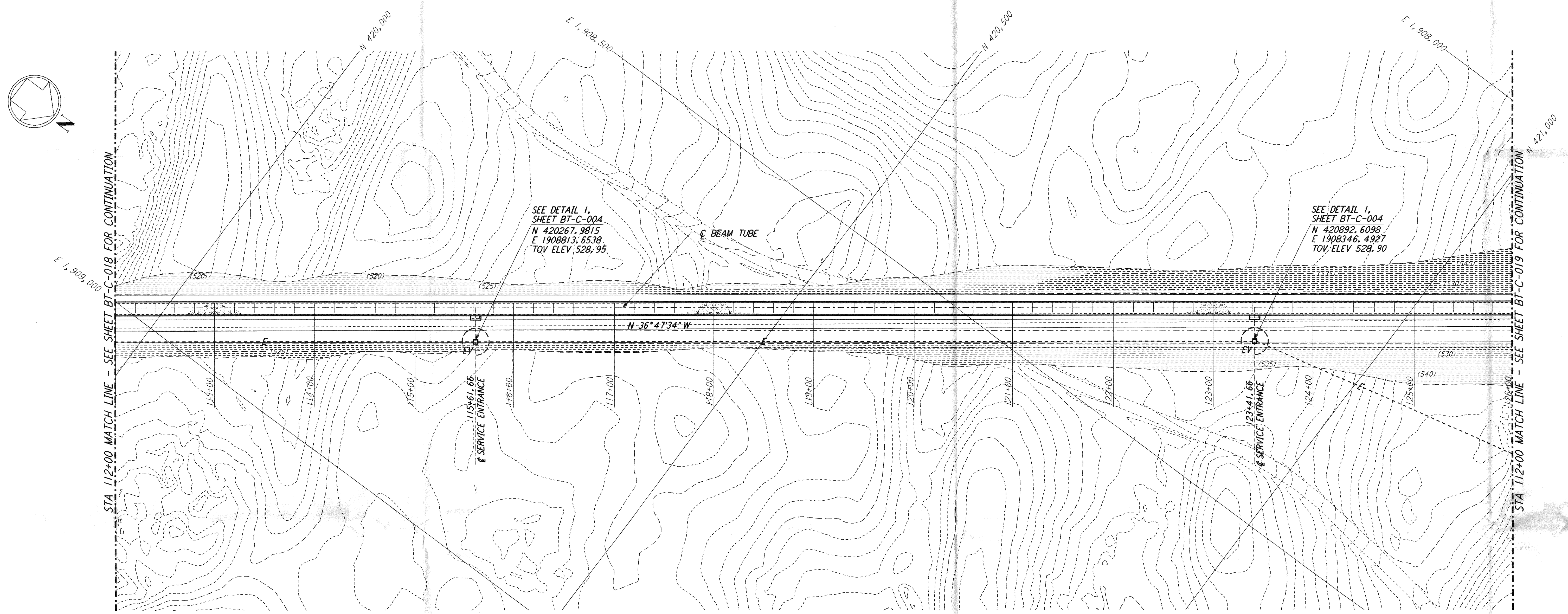


not be reproduced, copied, loaned, exhibited, or used in any other way, except by written consent from PARSONS to the borrower.

This document and the design it covers are the property of PARSONS. They are loaned only with the borrower's expressed written agreement that they will

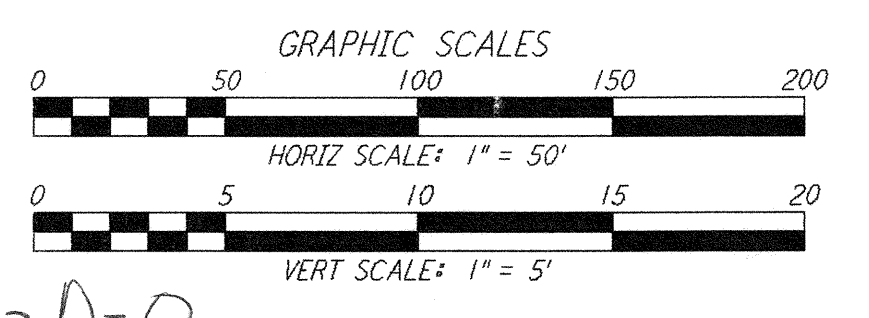
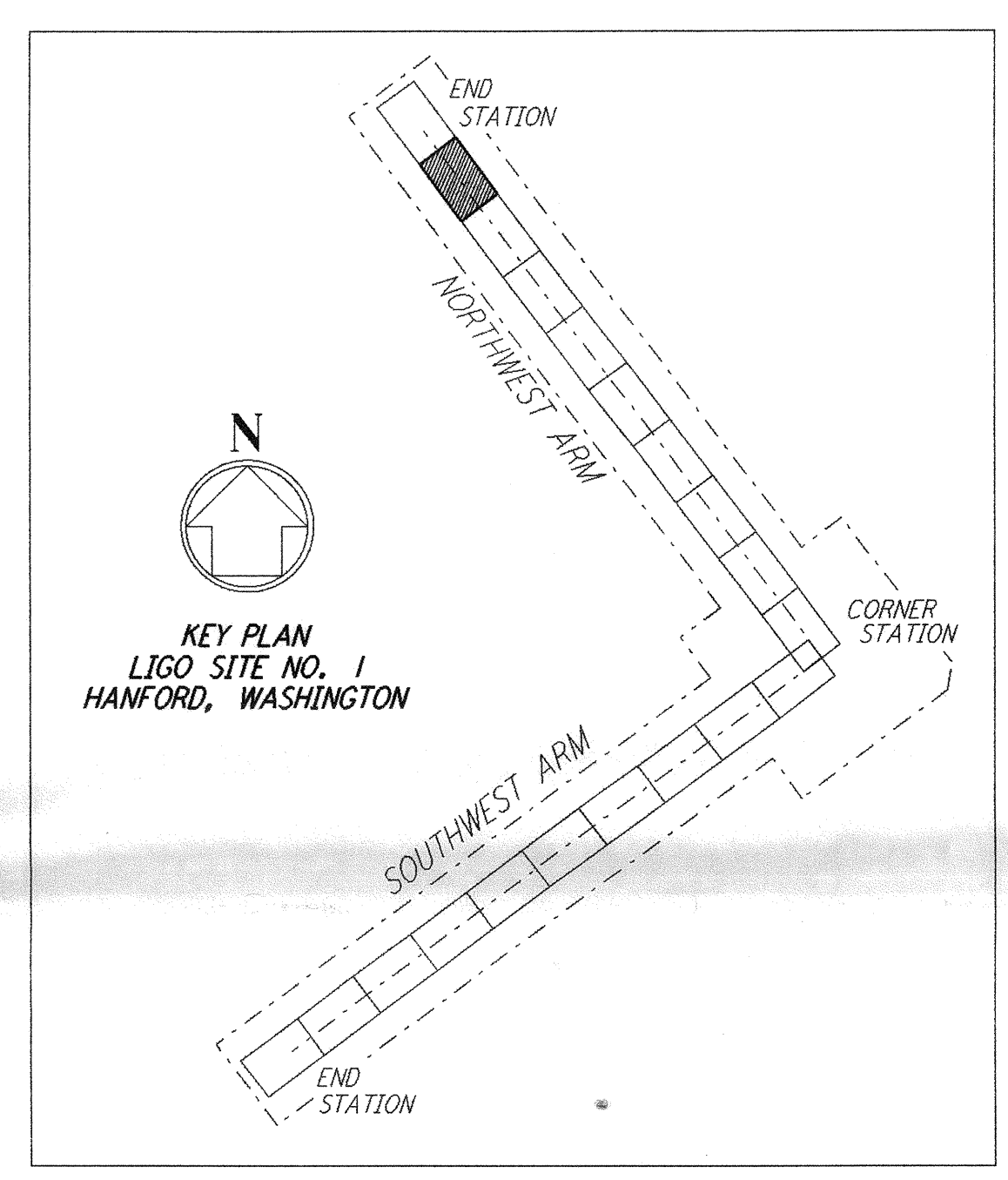


**PROFILE**  
 SCALES: HORIZ: 1" = 50'  
 VERT: 1" = 5'



**PLAN**  
 SCALE: 1" = 50'

- NOTES:**
- SEE SHEET BT-C-002 FOR GENERAL NOTES, LEGEND AND ABBREVIATIONS.
  - SEE SHEET BT-C-004 FOR TYPICAL SECTIONS AND DETAILS.



NO.	DATE	BY	CHKD	ENGR	PROJ	DESCRIPTION
D	11/21/95	WRB				ISSUED FOR BID
C	11/6/95	WRB				FINAL DESIGN REVIEW
B	10/3/95	WRB				DRAFT FINAL DESIGN REPORT
A	8/14/95	WRB				PRELIMINARY DESIGN REPORT

DRAWN	WRB
CHECKED	
ENGINEER	
PROJ	



100 WEST WALNUT STREET  
 PASADENA, CALIFORNIA



CALIFORNIA INSTITUTE OF TECHNOLOGY  
 MASSACHUSETTS INSTITUTE OF TECHNOLOGY

LASER INTERFEROMETER GRAVITATIONAL-WAVE OBSERVATORY BTE SITework & FABRICATION - HANFORD, WA					
TITLE	SCALE	CONTRACT NUMBER	PROJECT NUMBER		
NORTHWEST ARM PLAN AND PROFILE STA 112+00 TO STA 126+00	AS NOTED	PP150969	8094		
SHEET NUMBER		REVISIONS			
BT-C-019		<table border="1"> <tr> <td> </td> <td> </td> </tr> </table>			