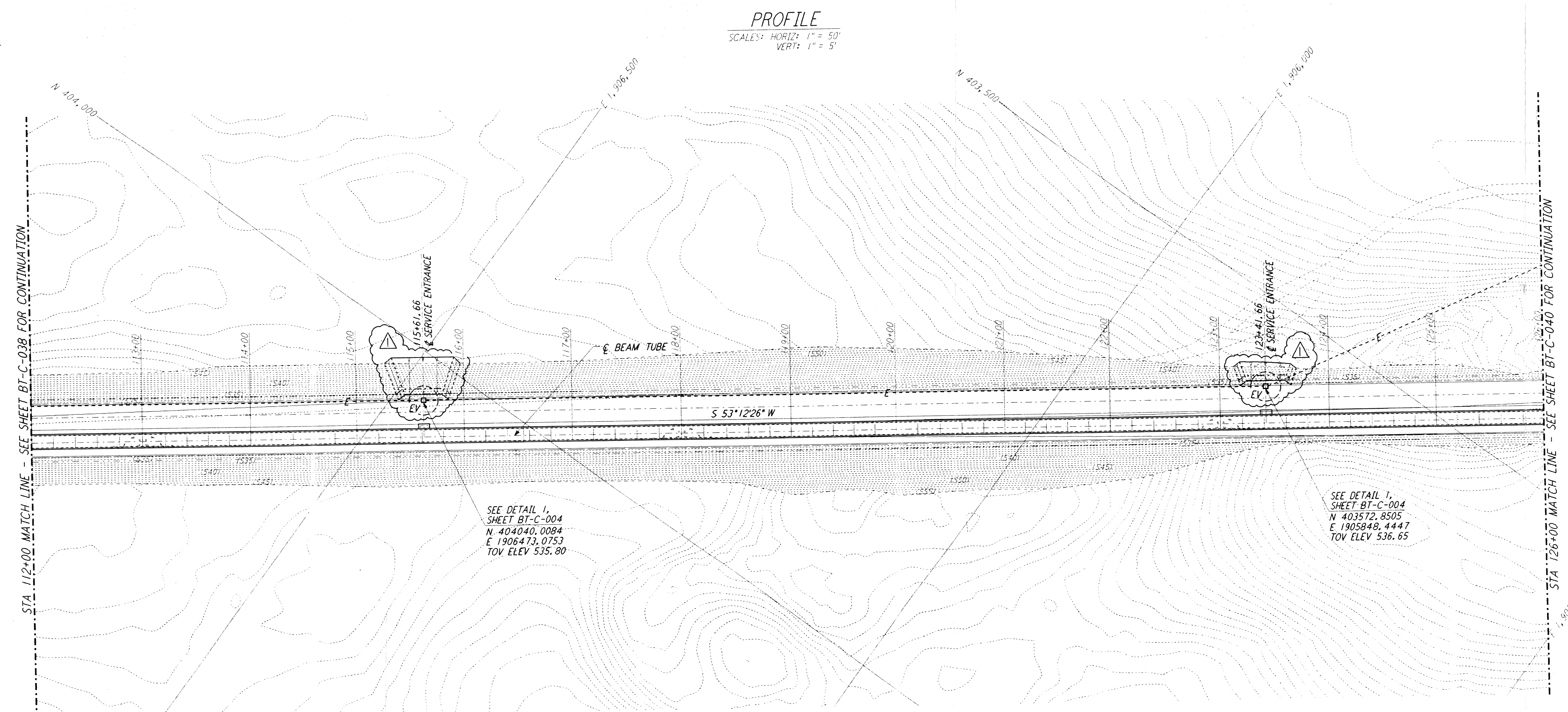
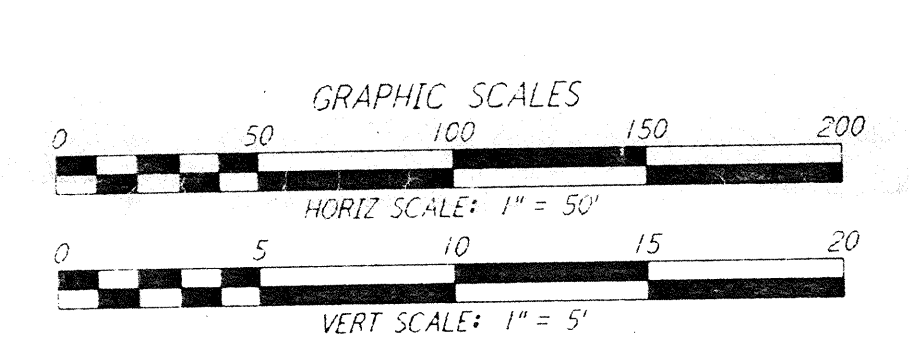
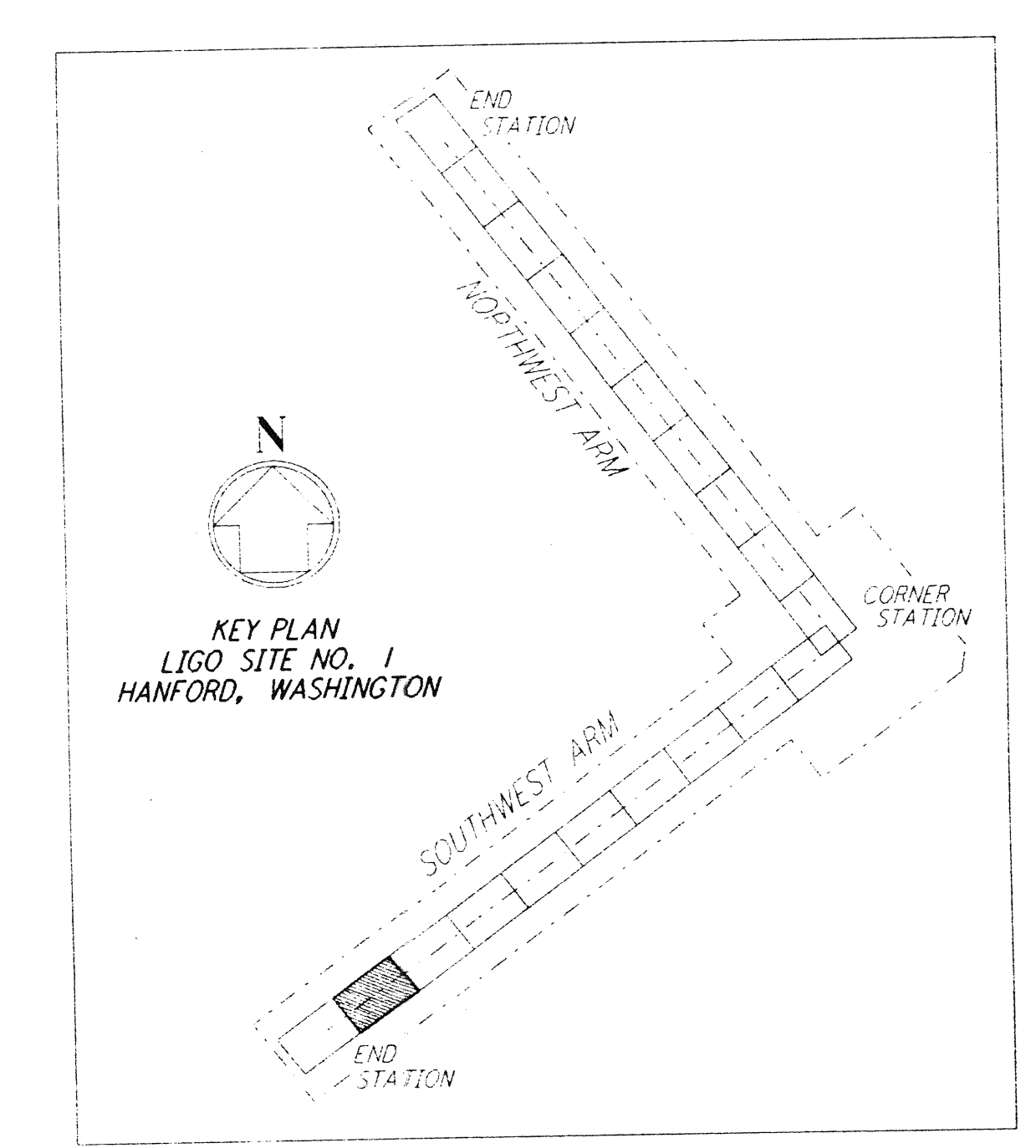


PROFILE
 SCALES: HORIZ: 1" = 50'
 VERT: 1" = 5'



PLAN
 SCALE: 1" = 50'

- NOTES:
- SEE SHEET BT-C-002 FOR GENERAL NOTES, LEGEND AND ABBREVIATIONS.
 - SEE SHEET BT-C-004 FOR TYPICAL SECTIONS AND DETAILS.



THIS DOCUMENT AND THE DESIGN IT SHOWS ARE THE PROPERTY OF PARSONS. They are loaned only with the borrower's expressed written agreement that they will not be used for any other way, except by written consent from PARSONS to the borrower.

| NO. | DATE | BY | CHKD | ENGR | PROJ | DESCRIPTION |
|-----|---------|-----|------|------|------|--------------------|
| 1 | 2-29-96 | WRB | | | | CHANGE ORDER NO. 2 |

| | |
|-------------------------|-------------|
| ISSUED FOR CONSTRUCTION | |
| DRAWN | WRB 1-19-96 |
| CHECKED | MP 1-19-96 |
| ENGINEER | JB 1-19-96 |
| PROJ | MDW 1-19-96 |

Johannes Blum
alq

PARSONS
 100 WEST WALNUT STREET
 PASADENA, CALIFORNIA

LIGO
 CALIFORNIA INSTITUTE OF TECHNOLOGY
 MASSACHUSETTS INSTITUTE OF TECHNOLOGY

LASER INTERFEROMETER
 GRAVITATIONAL-WAVE OBSERVATORY
 BTE SITework & FABRICATION - HANFORD, WA

CIVIL
 SOUTHWEST ARM
 PLAN AND PROFILE
 STA 112+00 TO STA 126+00

AS NOTED PP150969 8094
BT-C-039
 LIGO-D960184-01-D

| | | |
|--------------------|---------|----------------------------|
| Date Revised: | 3/28/96 | LIGO-D960184-01-D |
| Rev # | 1 | Original # BT-C-039, Rev 1 |
| Drawn | WRB | LIGO |
| Checked | MP | Approved: |
| Engineer | JB | LIGO |
| Proj | MDW | Approved: |
| Client Transmittal | LIGO | Approved: |
| Date | 1/1 | Approved: |