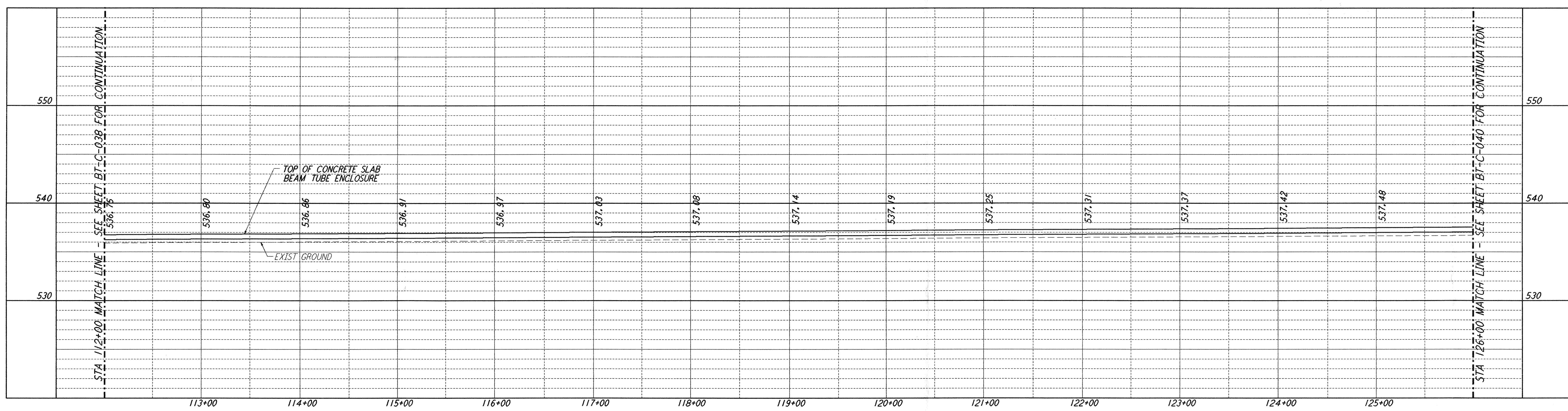
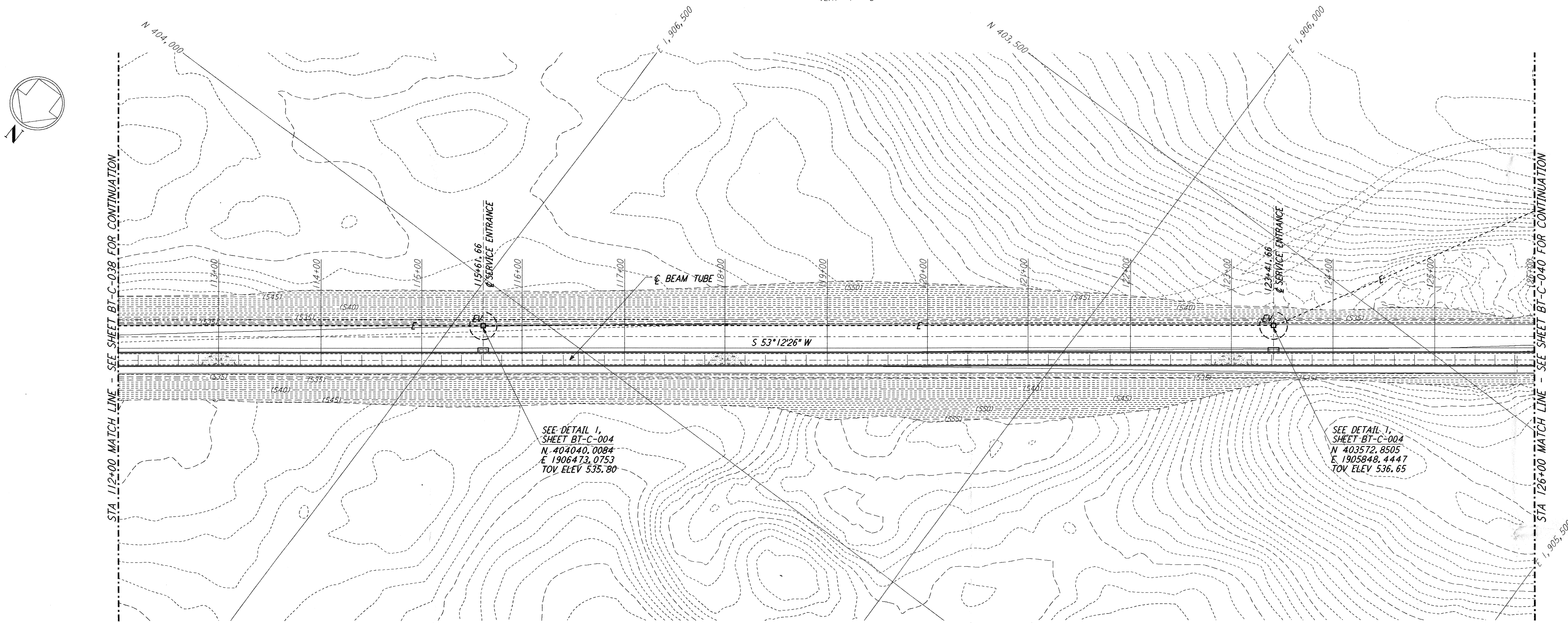


This document and the design it covers are the property of **PARSONS**. They are loaned only with the borrower's expressed written agreement that they will not be reproduced, copied, loaned, exhibited, or used in any other way, except by written consent from **PARSONS** to the borrower.

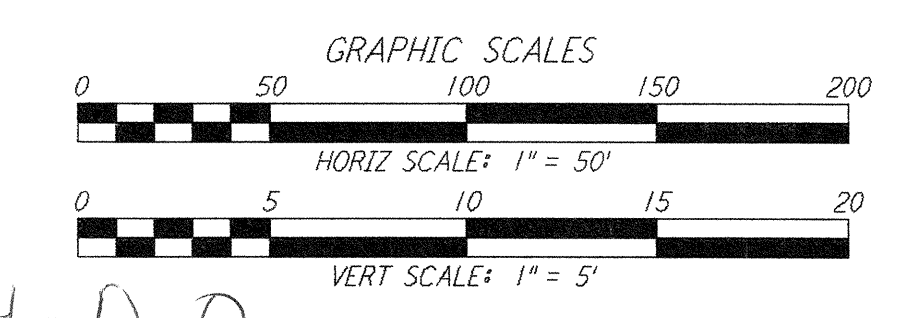
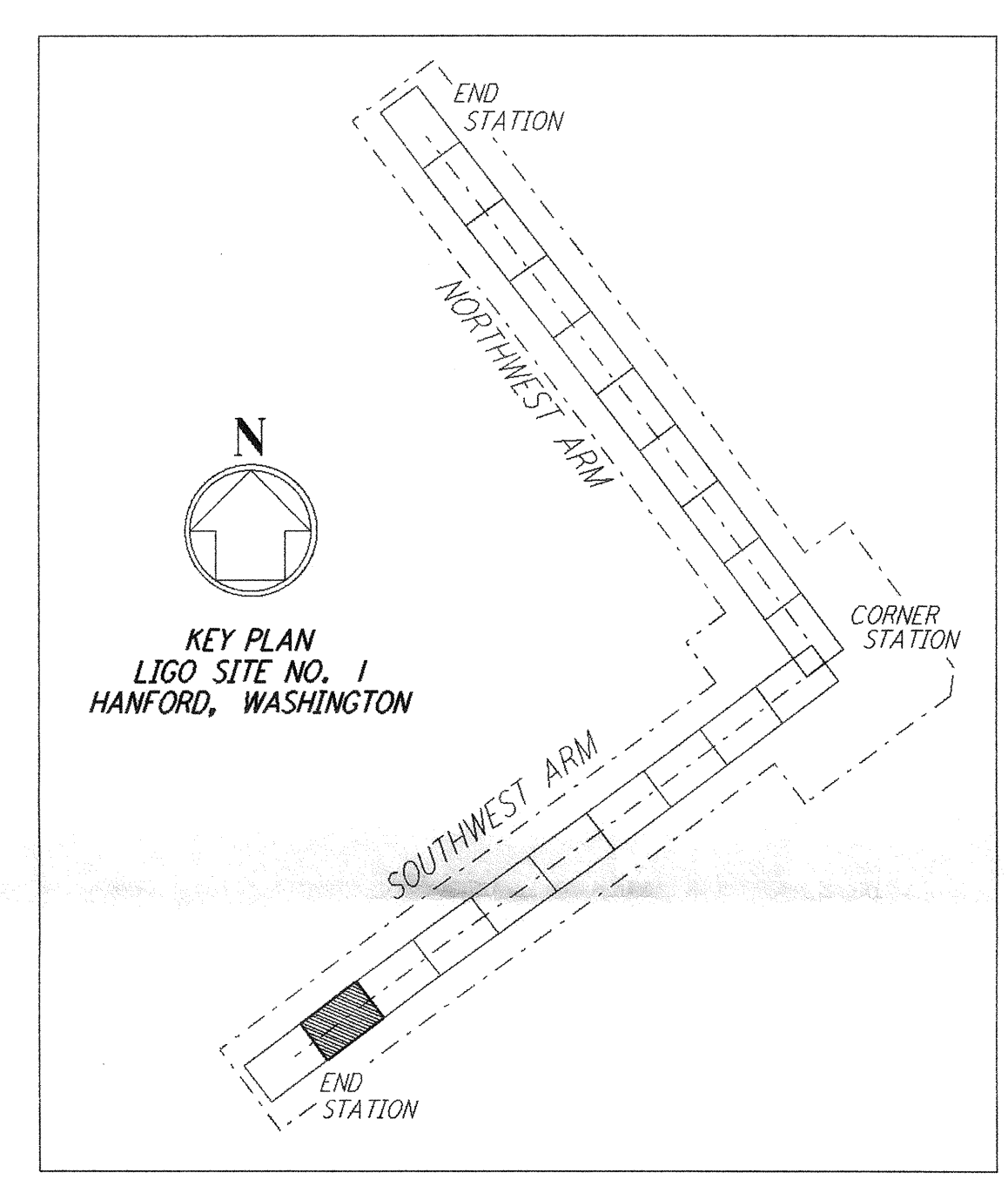
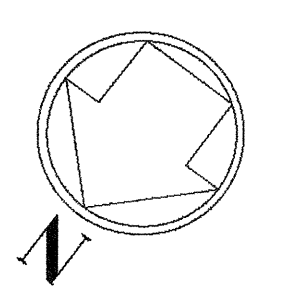


PROFILE
 SCALES: HORIZ: 1" = 50'
 VERT: 1" = 5'



PLAN
 SCALE: 1" = 50'

- NOTES:**
- SEE SHEET BT-C-002 FOR GENERAL NOTES, LEGEND AND ABBREVIATIONS.
 - SEE SHEET BT-C-004 FOR TYPICAL SECTIONS AND DETAILS.



0960184-D-D

NO.	DATE	BY	CHKD	ENGR	PROJ	DESCRIPTION
D	11/21/95	WRB				ISSUED FOR BID
C	11/6/95	WRB				FINAL DESIGN REVIEW
B	10/3/95	WRB				DRAFT FINAL DESIGN REPORT
A	8/14/95	WRB				PRELIMINARY DESIGN REPORT

NO.	DATE	BY	CHKD	ENGR	PROJ	DESCRIPTION

DRAWN	WRB
CHECKED	
ENGINEER	
PROJ	

PARSONS

100 WEST WALNUT STREET
 PASADENA, CALIFORNIA

LIGO

CALIFORNIA INSTITUTE OF TECHNOLOGY
 MASSACHUSETTS INSTITUTE OF TECHNOLOGY

LASER INTERFEROMETER
 GRAVITATIONAL-WAVE OBSERVATORY
 BTE SITework & FABRICATION - HANFORD, WA

**SOUTHWEST ARM
 PLAN AND PROFILE
 STA 112+00 TO STA 126+00**

SCALE: AS NOTED
 CONTRACT NUMBER: PPI50969
 PROJECT NUMBER: 8094

BT - C - 039