

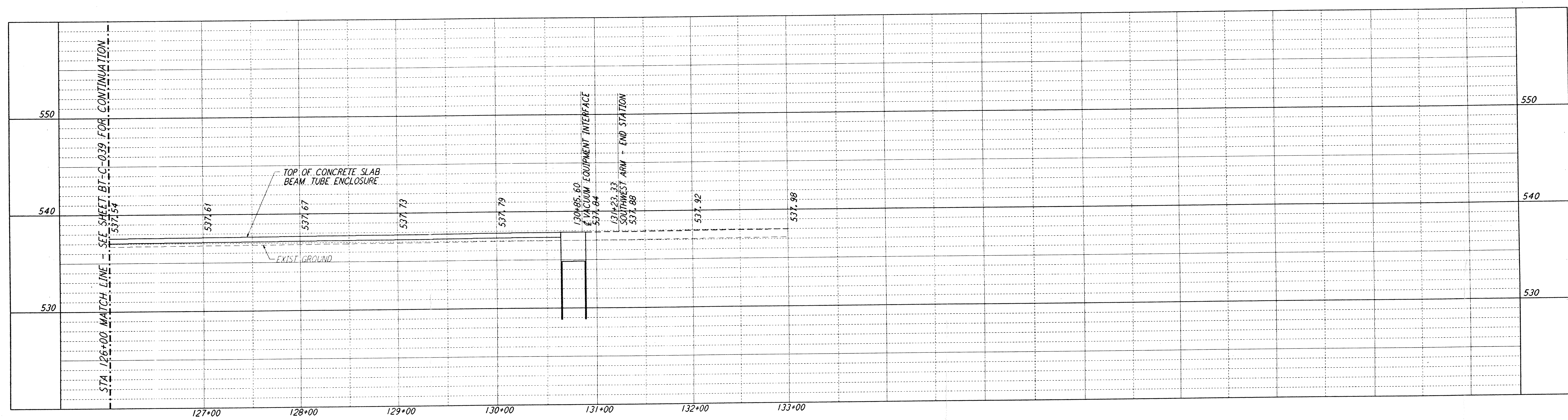
5

4

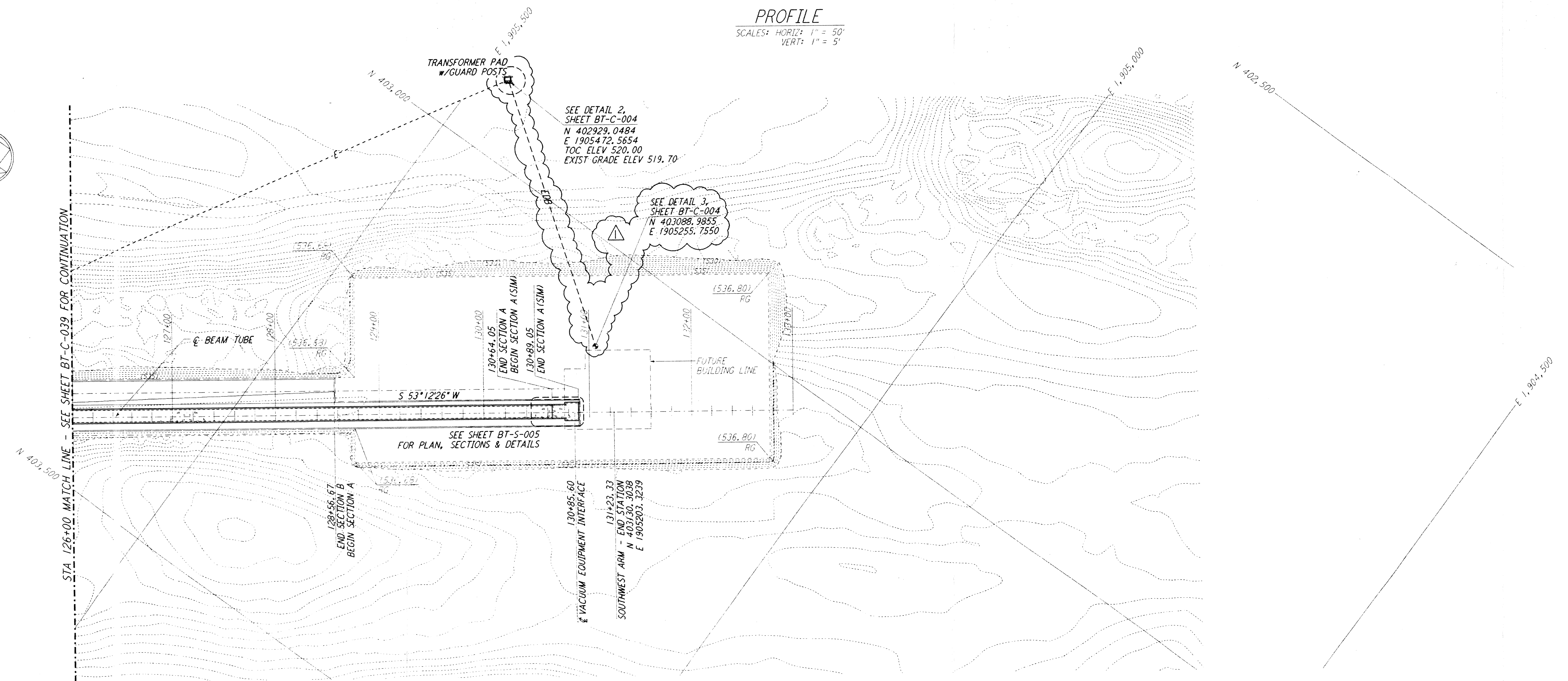
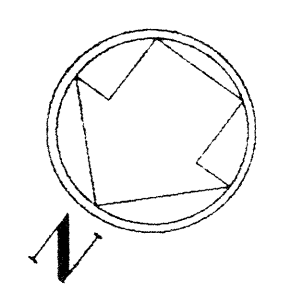
3

2

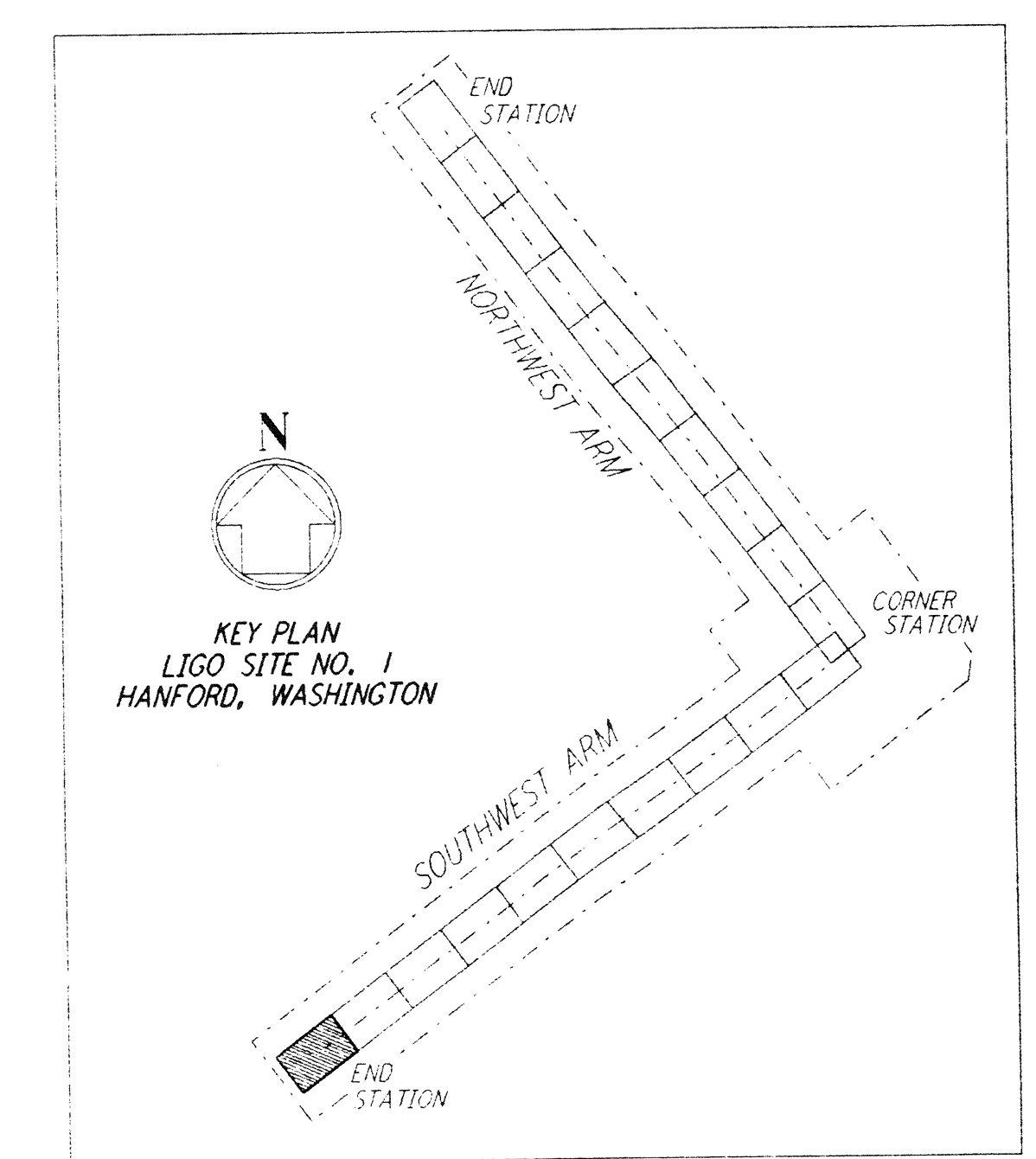
NOTES:
 1. SEE SHEET BT-C-002 FOR GENERAL NOTES, LEGEND AND ABBREVIATIONS.
 2. SEE SHEET BT-C-004 FOR TYPICAL SECTIONS AND DETAILS.



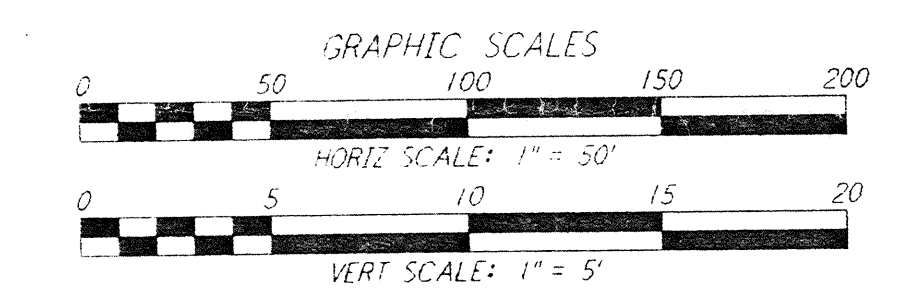
PROFILE
 SCALES: HORIZ: 1" = 50'
 VERT: 1" = 5'



PLAN
 SCALE: 1" = 50'



KEY PLAN
 LIGO SITE NO. 1
 HANFORD, WASHINGTON



THIS DOCUMENT AND THE DESIGN HEREIN ARE THE PROPERTY OF PARSONS. THEY ARE LOANED ONLY WITH THE BORROWER'S EXPRESSED WRITTEN AGREEMENT THAT THEY WILL NOT BE REPRODUCED OR TRANSMITTED IN ANY FORM OR BY ANY MEANS, ELECTRONIC OR MECHANICAL, INCLUDING PHOTOCOPYING, RECORDING, OR BY ANY INFORMATION STORAGE AND RETRIEVAL SYSTEM, WITHOUT THE WRITTEN PERMISSION OF PARSONS.

DRAWING NO.	DESCRIPTION	NO.	DATE	BY	CHKD	ENGR	PROJ	DESCRIPTION
		1	2-29-96	WRB				CHANGE ORDER NO. 2

ISSUED FOR CONSTRUCTION	WRB	1-19-96
DRAWN	WRB	1-19-96
CHECKED	MP	1-19-96
ENGINEER	JB	1-19-96
PROJ	MDW	1-19-96

J. Blaine
 12/96

PARSONS
 100 WEST WALNUT STREET
 PASADENA, CALIFORNIA

LIGO
 CALIFORNIA INSTITUTE OF TECHNOLOGY
 MASSACHUSETTS INSTITUTE OF TECHNOLOGY

LASER INTERFEROMETER
 GRAVITATIONAL-WAVE OBSERVATORY
 BTE SITWORK & FABRICATION - HANFORD, WA

CIVIL
 SOUTHWEST ARM
 PLAN AND PROFILE
 STA 126+00 TO STA 133+00

AS NOTED PPI50969 8094
BT-C-040
 Ligo-D960185-01-D

Date Received	3/25/96	Ligo-D960185-01-D
Contractor #		BT-C-040 (Rev.)
TM #		LIGO
Date	1/1	Approved
TM #		LIGO
Date	1/1	Approved
Gen'l Transmittal		LIGO
Date	1/1	Approved