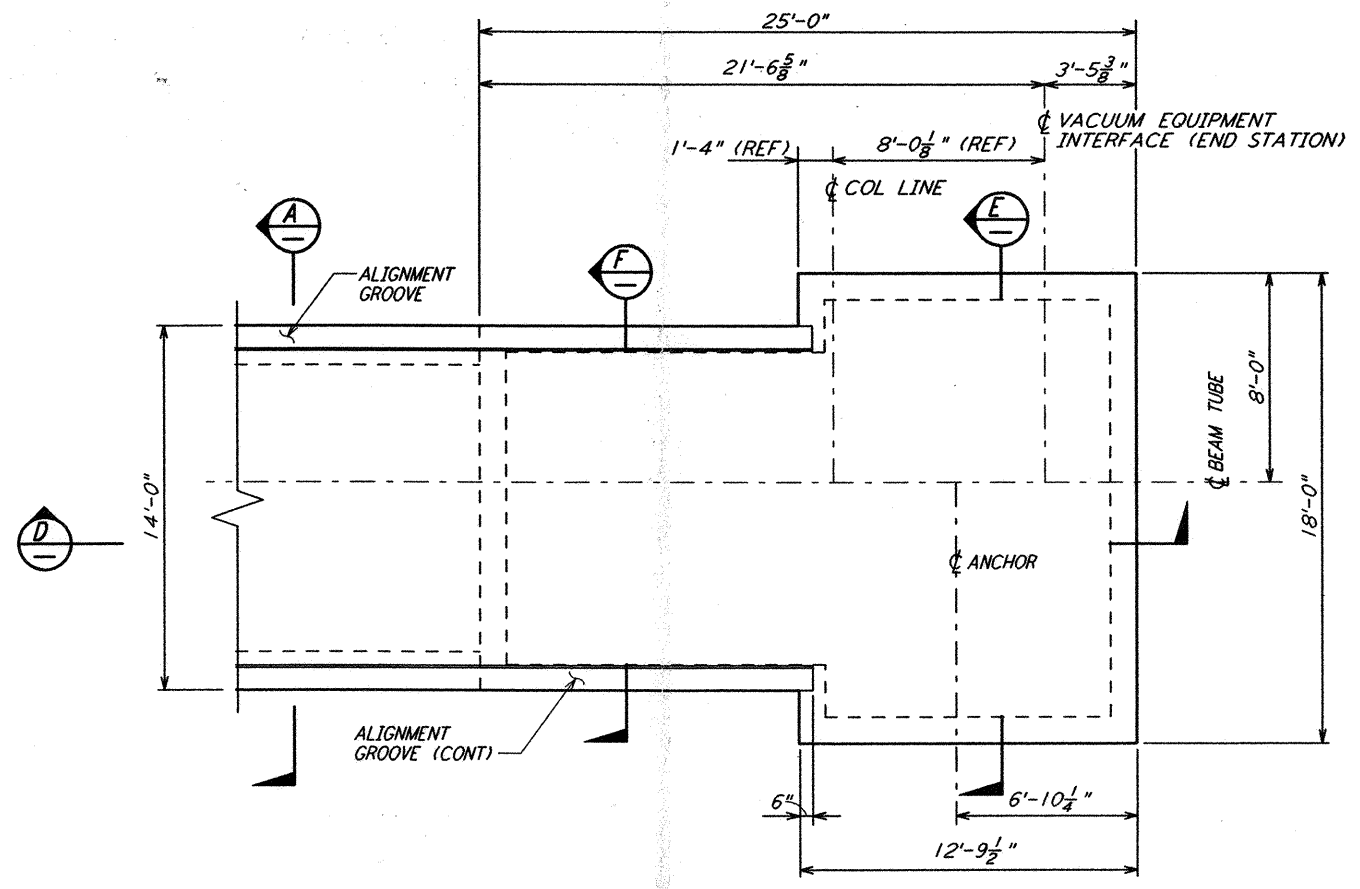
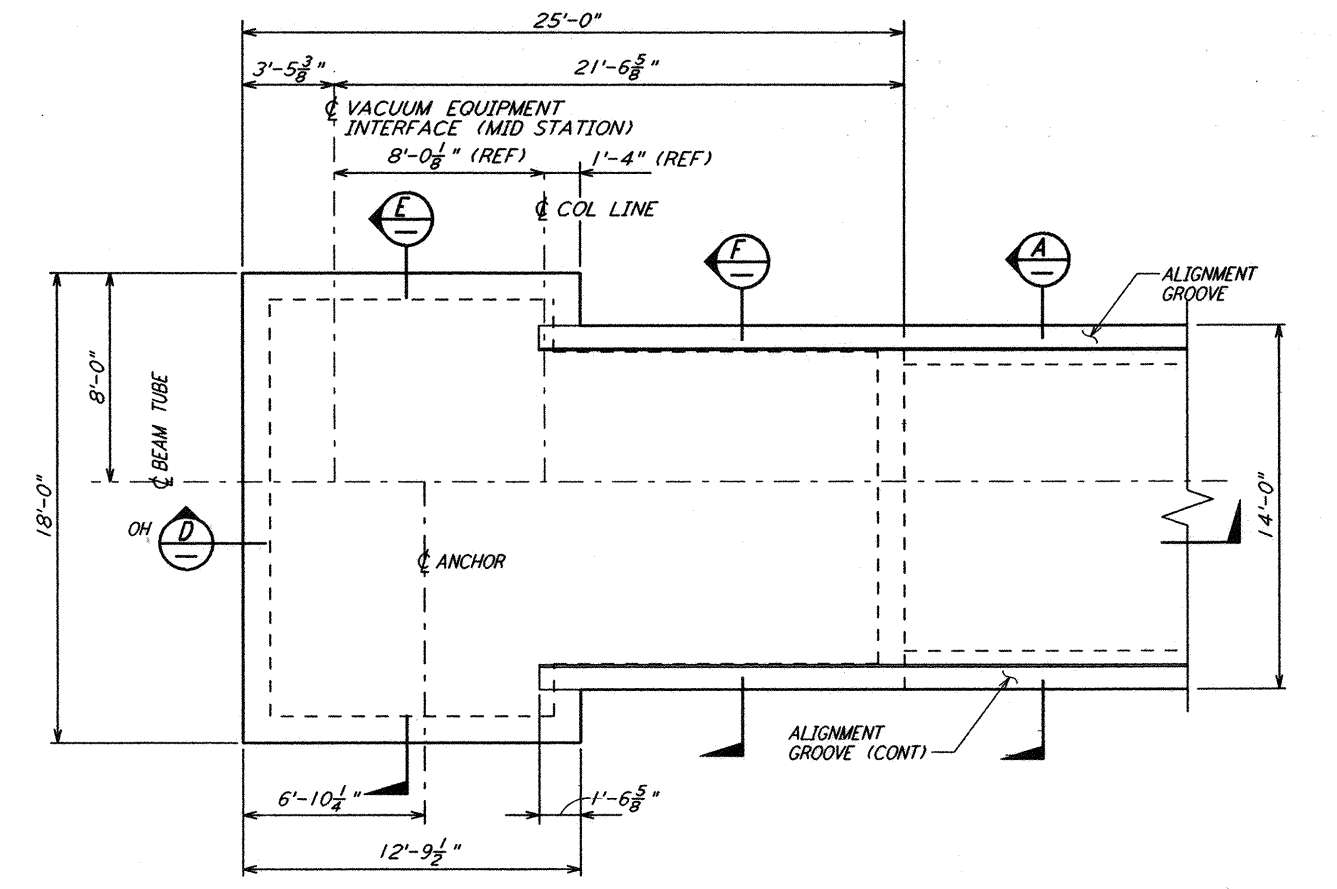


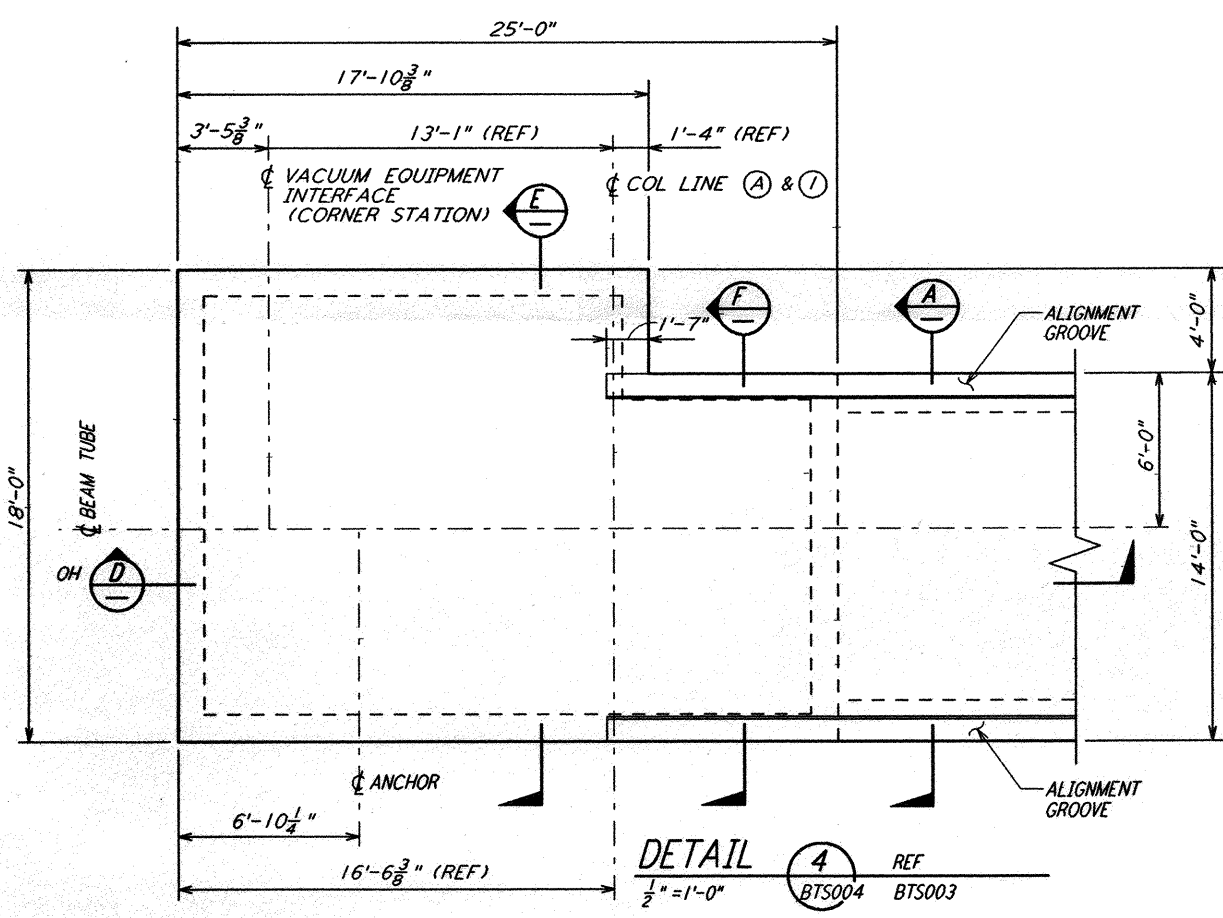
DETAIL 1 REF
 1/4" = 1'-0" BTS004 BTS003



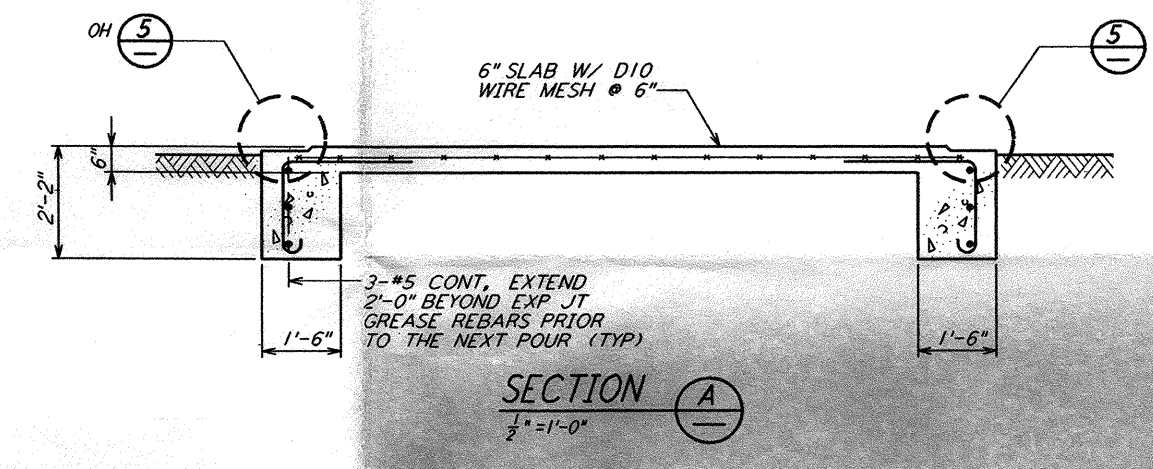
DETAIL 2 REF
 1/4" = 1'-0" BTS004 BTS003



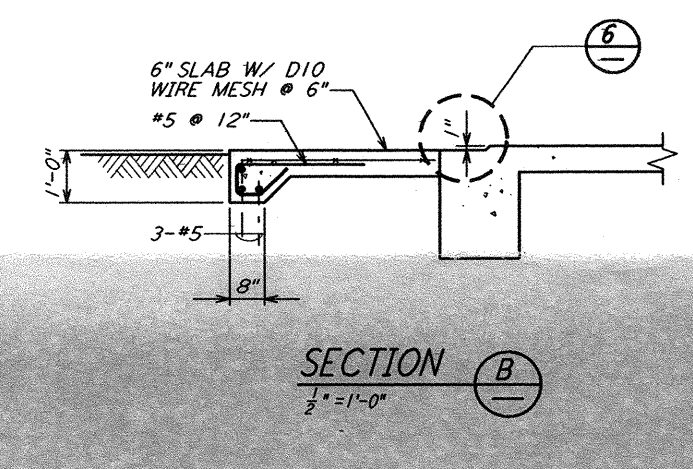
DETAIL 3 REF
 1/4" = 1'-0" BTS004 BTS003



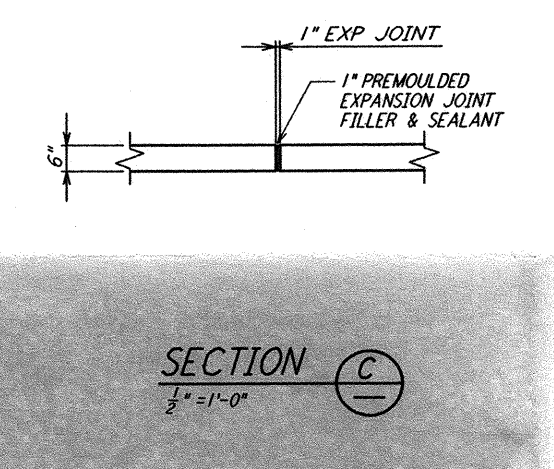
DETAIL 4 REF
 1/2" = 1'-0" BTS004 BTS003



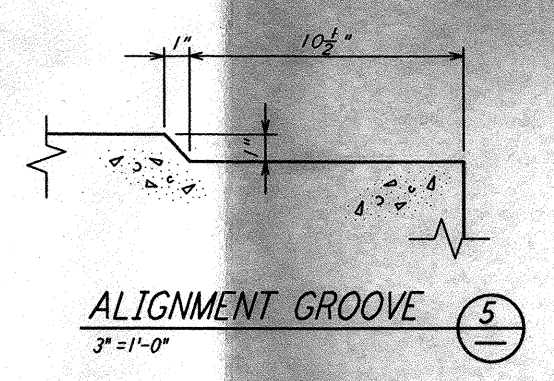
SECTION A REF
 1/2" = 1'-0"



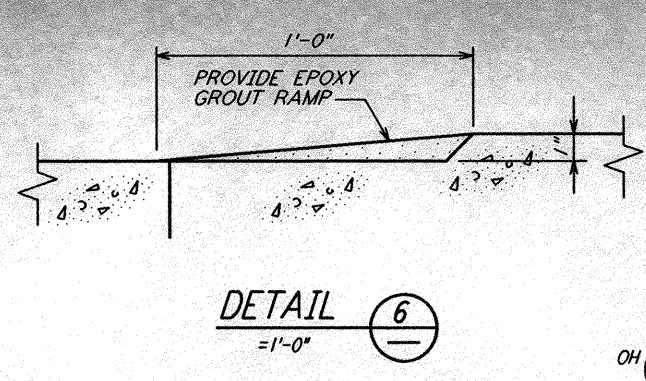
SECTION B REF
 1/2" = 1'-0"



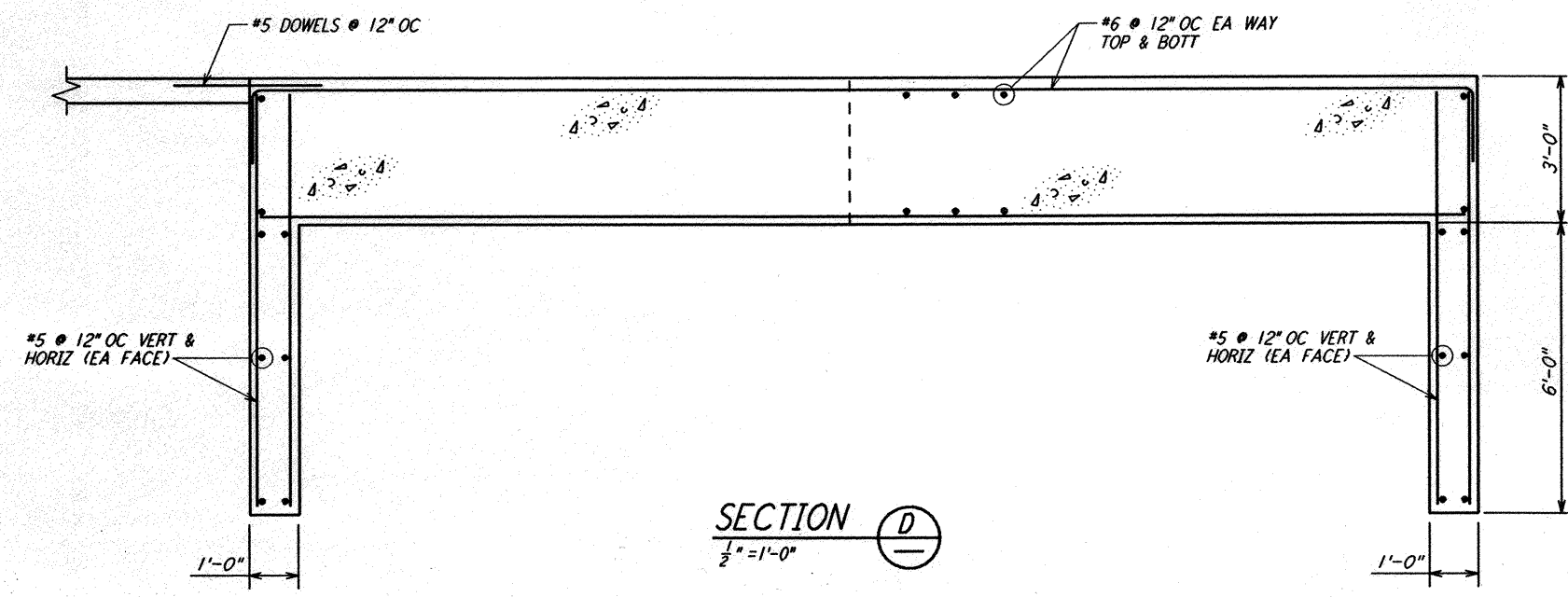
SECTION C REF
 1/2" = 1'-0"



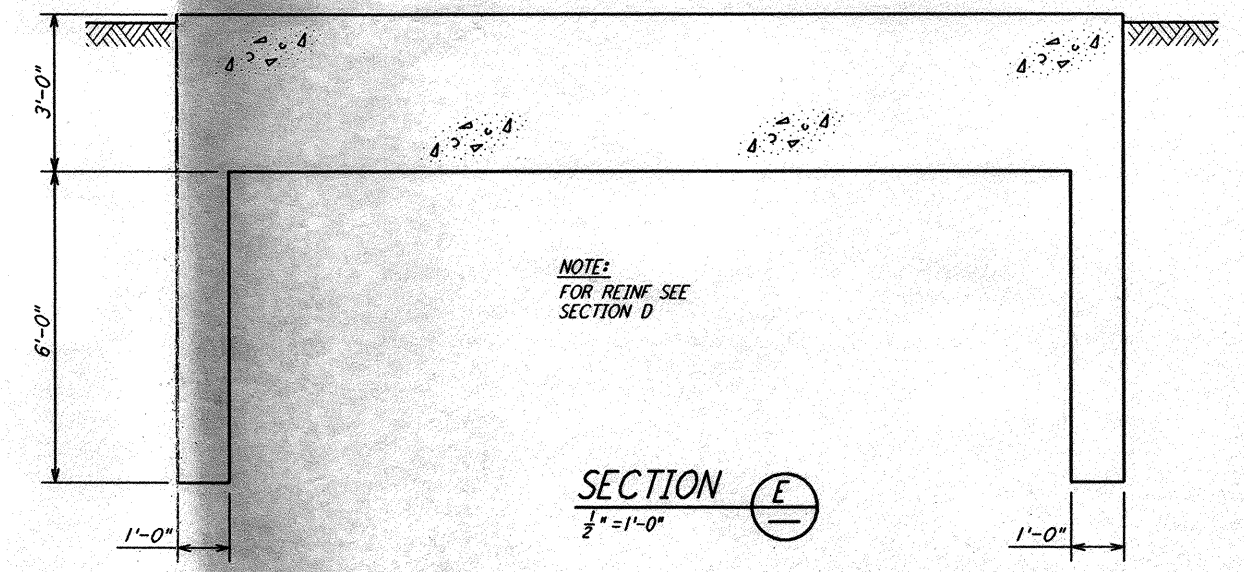
ALIGNMENT GROOVE 5 REF
 3" = 1'-0"



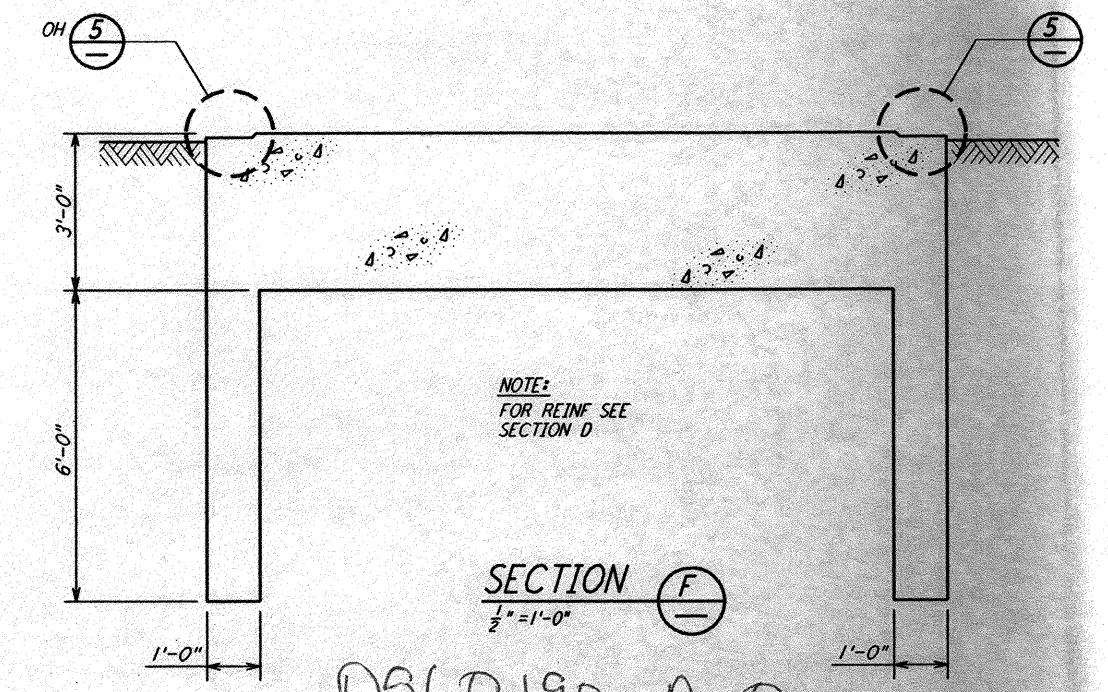
DETAIL 6 REF
 1'-0"



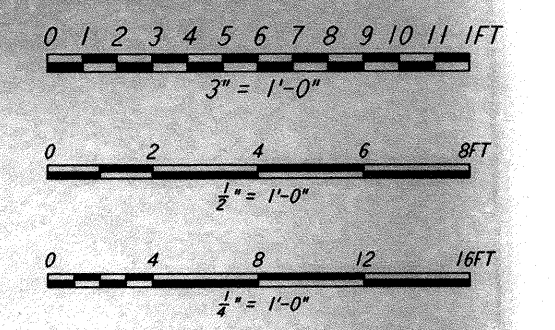
SECTION D REF
 1/2" = 1'-0"



SECTION E REF
 1/2" = 1'-0"



SECTION F REF
 1/2" = 1'-0"



D960190-A-0

REVISION	NO.	DATE	APPROD BY	DESCRIPTION OF REVISION
9				
8				
7				
6				
5				
4				
3				
2				
1				

ISSUE	NO.	DATE	APPROD BY	ISSUED FOR
1		8-14-95		PRELIMINARY DESIGN REPORT

DATE	8-10-95
DRAWN	SH
CHECKED	
SECT HD	
PROJ MGR	
CLIENT	

PARSONS
 100 WEST WALNUT STREET
 PASADENA, CALIFORNIA

LIGO
 CALIFORNIA INSTITUTE OF TECHNOLOGY
 MASSACHUSETTS INSTITUTE OF TECHNOLOGY

LASER INTERFEROMETER
 GRAVITATIONAL-WAVE OBSERVATORY
 BEAM TUBE ENCLOSURE - HANFORD, WA
 ENLARGED PARTIAL
 FOUNDATION PLANS,
 SECTIONS & DETAILS
BT-S-004