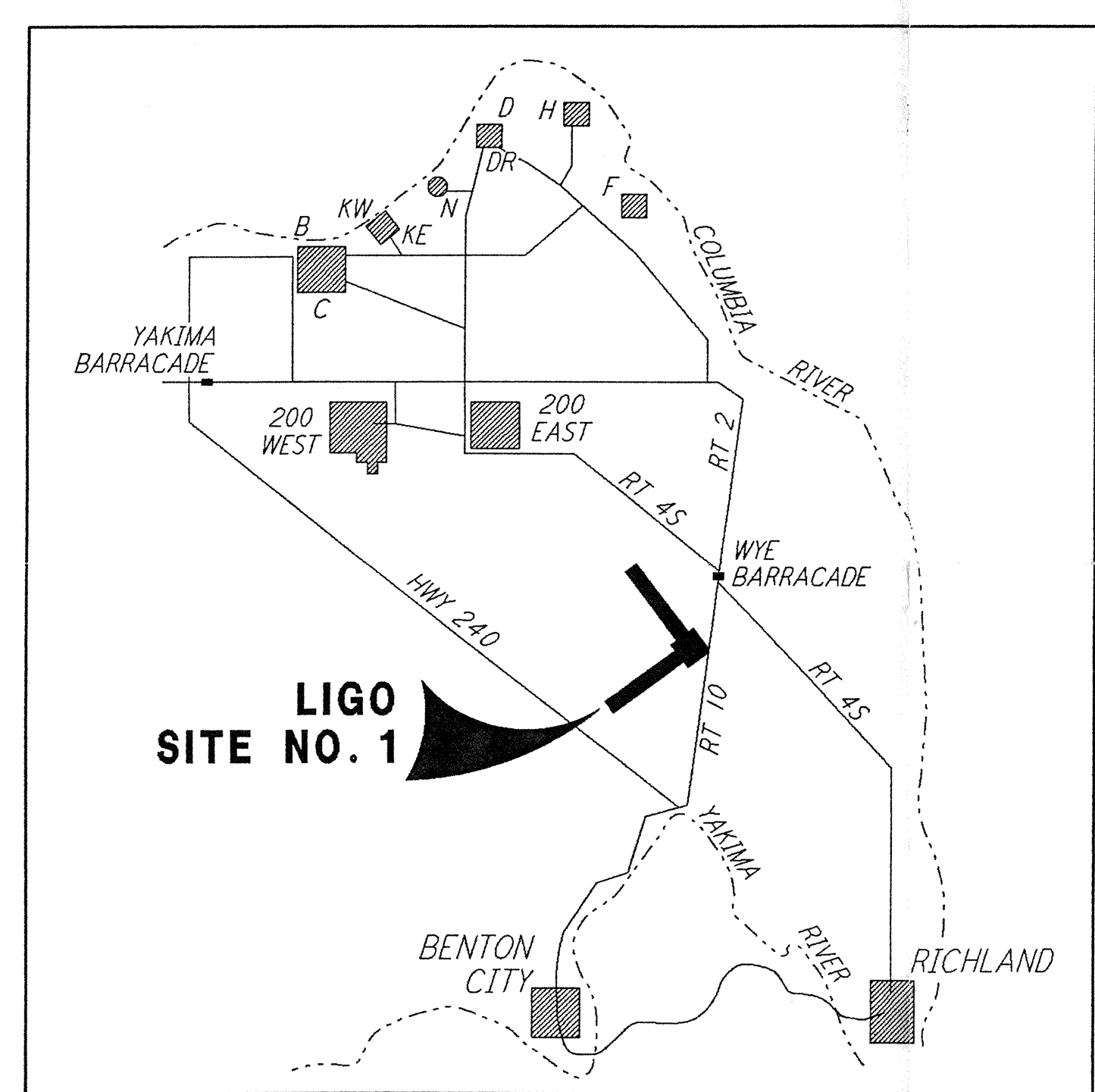
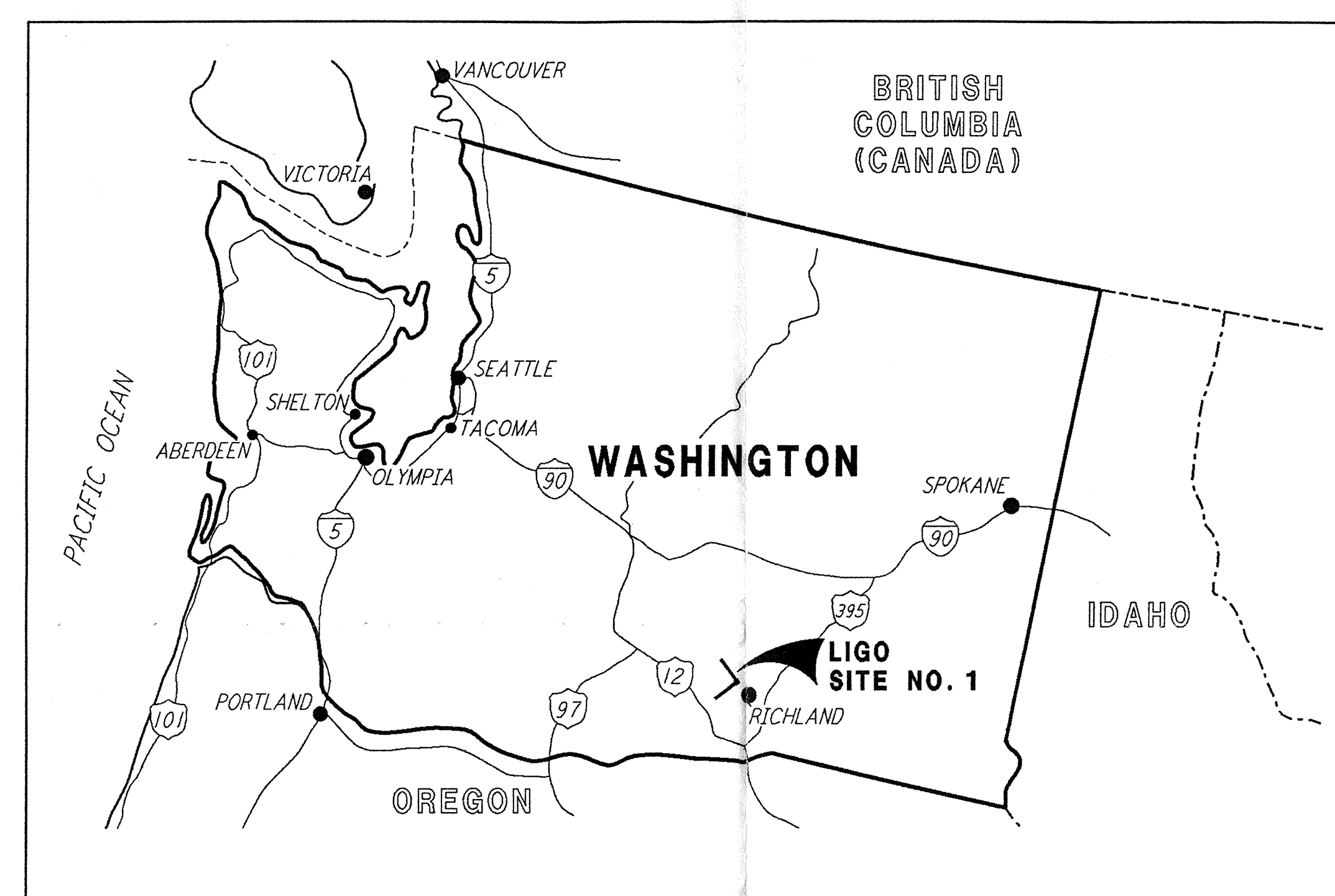


This document and the design it covers are the property of PARSONS. They are loaned only with the borrower's expressed written agreement that they will not be reproduced, copied, loaned, exhibited, or used in any other way, except by written consent from PARSONS to the borrower.

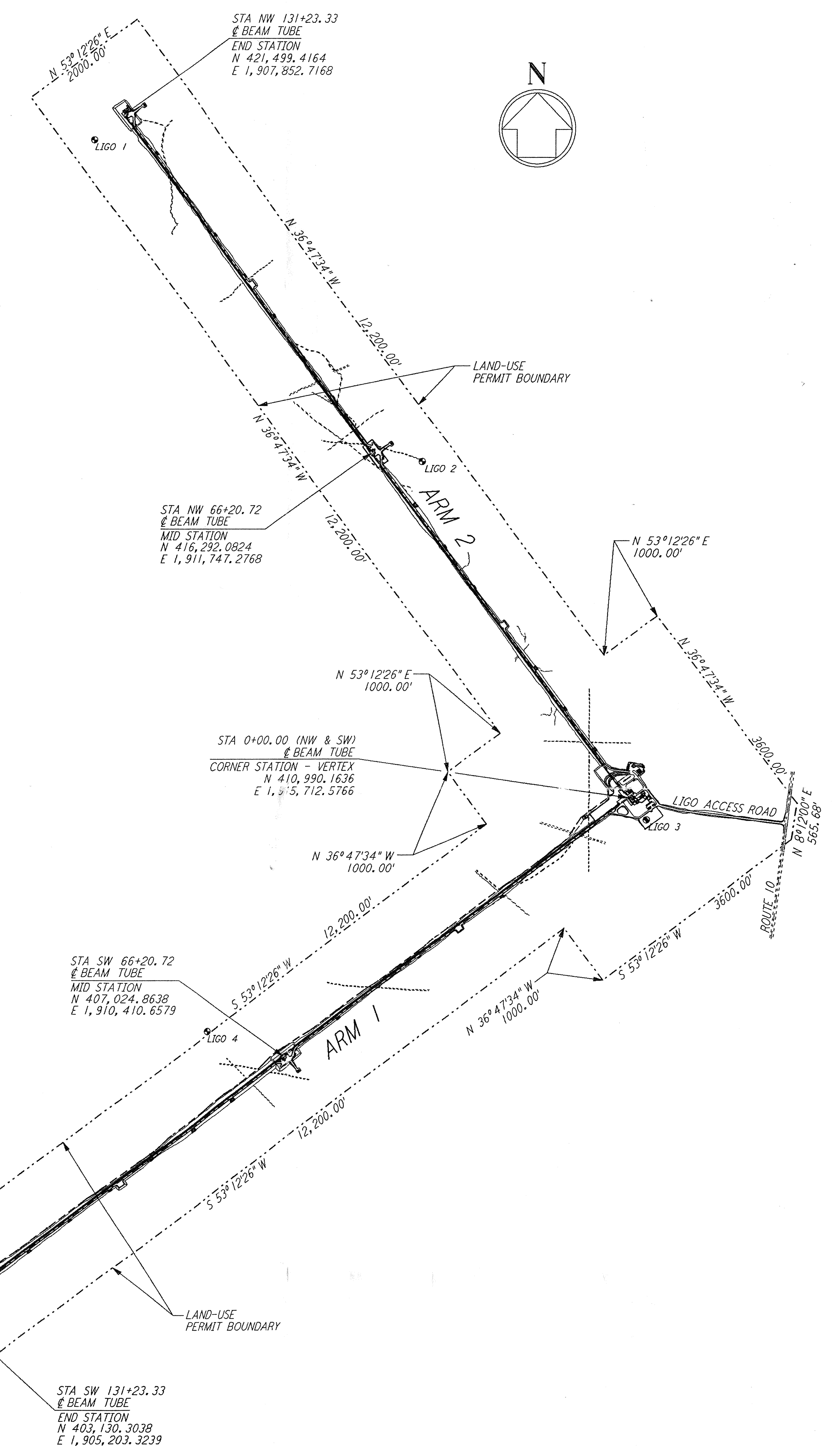
DRAWING INDEX	
DRAWING NUMBER	DRAWING TITLE
WA-C-001	DRAWING INDEX, LOCATION & VICINITY MAPS
WA-C-002	GENERAL NOTES, LEGEND & ABBREVIATIONS
WA-C-003	DRAWING MATRIX
WA-C-004	TYPICAL SECTIONS
<del>WA-C-005</del>	<del>CORNER STATION PLOT PLAN</del> <b>OMIT</b>
WA-C-006	CORNER STATION PLOT PLAN, ENLARGED PLANS
<del>WA-C-007</del>	<del>CORNER STATION GRADING PLAN</del> <b>OMIT</b>
WA-C-008	CORNER STATION GRADING PLAN, ENLARGED PLANS
<del>WA-C-009</del>	<del>CORNER STATION UTILITY PLAN</del> <b>OMIT</b>
<del>WA-C-010</del>	<del>CORNER STATION UTILITY PLAN, ENLARGED PLANS</del> <b>OMIT</b>
WA-C-011	NORTHWEST ARM, PLAN AND PROFILE, STA 0+00 TO 14+00
WA-C-012	NORTHWEST ARM, PLAN AND PROFILE, STA 14+00 TO 28+00
WA-C-013	NORTHWEST ARM, PLAN AND PROFILE, STA 28+00 TO 42+00
WA-C-014	NORTHWEST ARM, PLAN AND PROFILE, STA 42+00 TO 56+00
WA-C-015	NORTHWEST ARM, PLAN AND PROFILE, STA 56+00 TO 70+00
WA-C-016	NORTHWEST ARM, PLAN AND PROFILE, STA 70+00 TO 84+00
WA-C-017	NORTHWEST ARM, PLAN AND PROFILE, STA 84+00 TO 98+00
WA-C-018	NORTHWEST ARM, PLAN AND PROFILE, STA 98+00 TO 112+00
WA-C-019	NORTHWEST ARM, PLAN AND PROFILE, STA 112+00 TO 126+00
WA-C-020	NORTHWEST ARM, PLAN AND PROFILE, STA 126+00 TO 133+00
WA-C-021	NORTHWEST ARM, MID-STATION, PLOT PLAN
WA-C-022	NORTHWEST ARM, MID-STATION, GRADING PLAN
WA-C-023	NORTHWEST ARM, MID-STATION, UTILITY PLAN
WA-C-025	NORTHWEST ARM, END-STATION, PLOT PLAN
WA-C-026	NORTHWEST ARM, END-STATION, GRADING PLAN
WA-C-027	NORTHWEST ARM, END-STATION, UTILITY PLAN
WA-C-031	SOUTHWEST ARM, PLAN AND PROFILE, STA 0+00 TO 14+00
WA-C-032	SOUTHWEST ARM, PLAN AND PROFILE, STA 14+00 TO 28+00
WA-C-033	SOUTHWEST ARM, PLAN AND PROFILE, STA 28+00 TO 42+00
WA-C-034	SOUTHWEST ARM, PLAN AND PROFILE, STA 42+00 TO 56+00
WA-C-035	SOUTHWEST ARM, PLAN AND PROFILE, STA 56+00 TO 70+00
WA-C-036	SOUTHWEST ARM, PLAN AND PROFILE, STA 70+00 TO 84+00
WA-C-037	SOUTHWEST ARM, PLAN AND PROFILE, STA 84+00 TO 98+00
WA-C-038	SOUTHWEST ARM, PLAN AND PROFILE, STA 98+00 TO 112+00
WA-C-039	SOUTHWEST ARM, PLAN AND PROFILE, STA 112+00 TO 126+00
WA-C-040	SOUTHWEST ARM, PLAN AND PROFILE, STA 126+00 TO 133+00
WA-C-041	SOUTHWEST ARM, MID-STATION, PLOT PLAN
WA-C-042	SOUTHWEST ARM, MID-STATION, GRADING PLAN
WA-C-043	SOUTHWEST ARM, MID-STATION, UTILITY PLAN
WA-C-045	SOUTHWEST ARM, END-STATION, PLOT PLAN
WA-C-046	SOUTHWEST ARM, END-STATION, GRADING PLAN
WA-C-047	SOUTHWEST ARM, END-STATION, UTILITY PLAN
WA-C-050	LIGO ACCESS ROAD, PLAN AND PROFILE
WA-C-051	SITWORK DETAILS, SHEET 1
WA-C-052	SITWORK DETAILS, SHEET 2
WA-C-053	GRADING SECTIONS & DETAILS, SHEET 1
WA-C-054	GRADING SECTIONS & DETAILS, SHEET 2
WA-C-055	UTILITY DETAILS, SHEET 1
WA-C-056	UTILITY DETAILS, SHEET 2
WA-C-505	CORNER STATION PLOT PLAN
WA-C-507	CORNER STATION GRADING PLAN
WA-C-509	CORNER STATION UTILITY PLAN
WA-C-510	CORNER STATION UTILITY PLAN, ENLARGED PLANS



**COORDINATE TABLE & ELEVATIONS FOR LIGO GPS POINTS**

GPS POINT	COORDINATES		ELEVATION
	NORTH	EAST	
LIGO 1	421113.464	1907424.820	563.237
LIGO 2	416164.285	1912526.068	550.905
LIGO 3	410647.803	1916004.584	542.532
LIGO 4	407401.131	1909213.733	561.242
LIGO 5	403900.640	1905770.659	554.431
LIGO 6	413750.547	1904062.124	—

NOTE: GPS COORDINATE POINTS ARE HIGH ACCURACY, PLACED BY THE WSDOT GEOGRAPHIC SERVICES.



NO.	DATE	BY	CHKD	ENGR	PROJ	DESCRIPTION
B	4/19/96	WRB				FINAL DESIGN REVIEW & BID
A	10/31/95	WRB				PRELIMINARY DESIGN REVIEW

DRAWN	WRB
CHECKED	
ENGINEER	
PRJ	

**PARSONS**  
 100 WEST WALNUT STREET  
 PASADENA, CALIFORNIA

**LIGO**  
 CALIFORNIA INSTITUTE OF TECHNOLOGY  
 MASSACHUSETTS INSTITUTE OF TECHNOLOGY

LASER INTERFEROMETER  
 GRAVITATIONAL-WAVE OBSERVATORY  
 SITE NO. 1 - HANFORD, WASHINGTON

TITLE: CIVIL DRAWING INDEX LOCATION & VICINITY MAPS

AS NOTED PPI50969 8094

**WA-C-001**

I:\lgo\site\lce\wac001.dgz