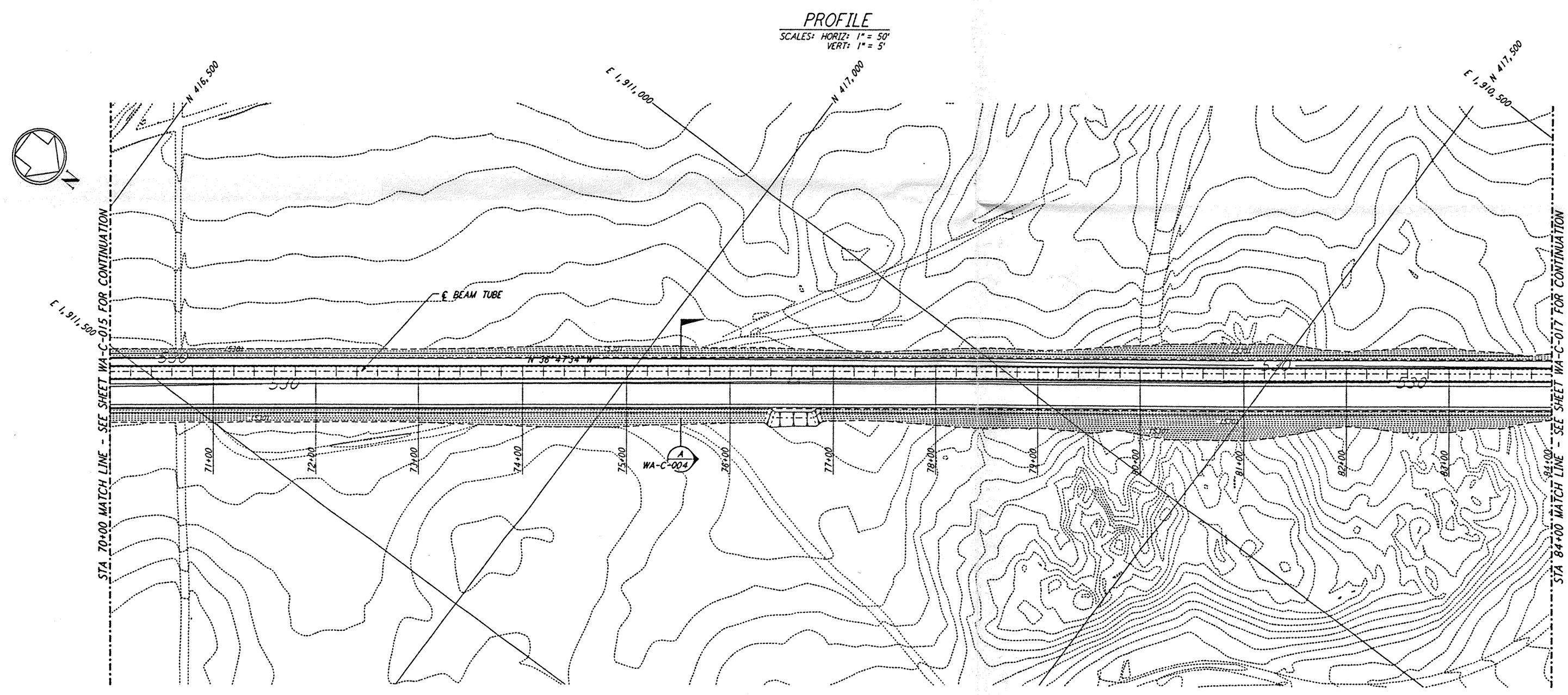
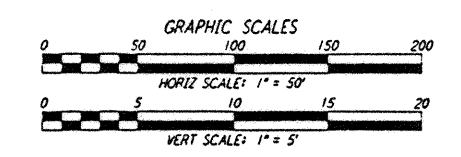
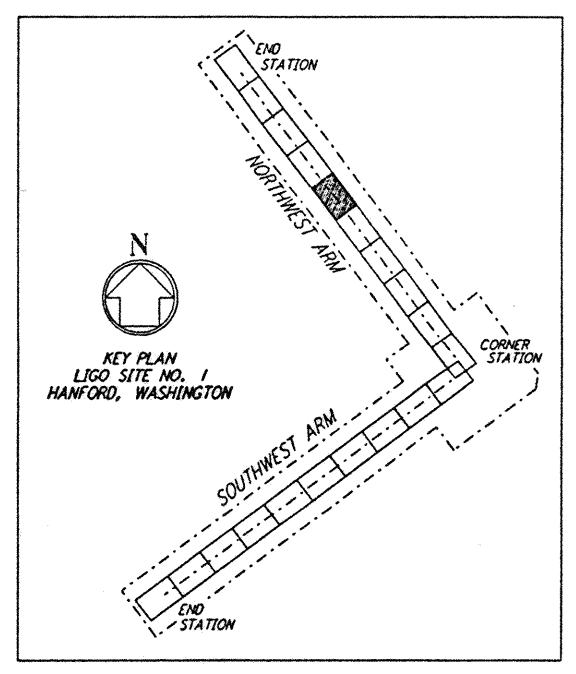


**NOTES:**  
1. SEE SHEET WA-C-002 FOR GENERAL NOTES, LEGEND AND ABBREVIATIONS.



**PROFILE**  
SCALE: HORIZ: 1" = 50'  
VERT: 1" = 5'

**PLAN**  
SCALE: 1" = 50'



not be reproduced, copied, loaned, exhibited, or used in any other way, except by written consent from PARSONS to the borrower.

This document and the design it covers are the property of PARSONS. They are loaned only with the borrower's expressed written agreement that they will

NO.	DATE	BY	CHKD	ENGR	PROJ	DESCRIPTION
B	4/19/96	WRB	YDM			FINAL DESIGN REVIEW & BID
A	10/31/95	WRB				PRELIMINARY DESIGN REVIEW

DRAWN	WRB
CHECKED	
ENGINEER	
PROJ	

**PARSONS**  
100 WEST WALNUT STREET  
PASADENA, CALIFORNIA

**LIGO**  
CALIFORNIA INSTITUTE OF TECHNOLOGY  
MASSACHUSETTS INSTITUTE OF TECHNOLOGY

LASER INTERFEROMETER  
GRAVITATIONAL-WAVE OBSERVATORY  
SITE NO. 1 - HANFORD, WASHINGTON

CIVIL  
NORTHWEST ARM  
PLAN AND PROFILE  
STA 70+00 TO STA 84+00

AS NOTED PPI50969 8094  
**WA-C-016**

LIGO-D960207-B-1A