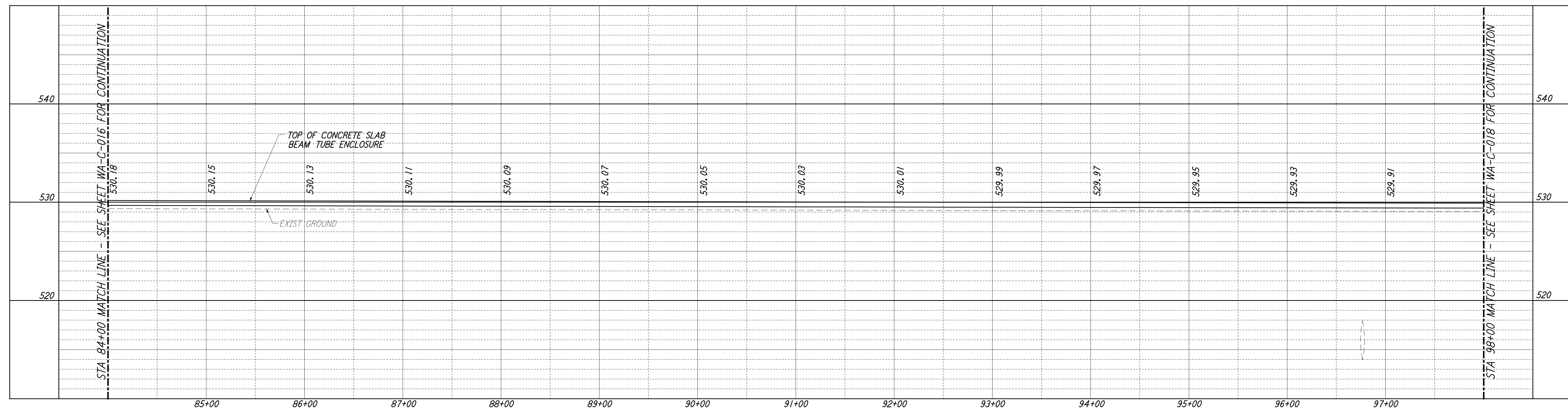
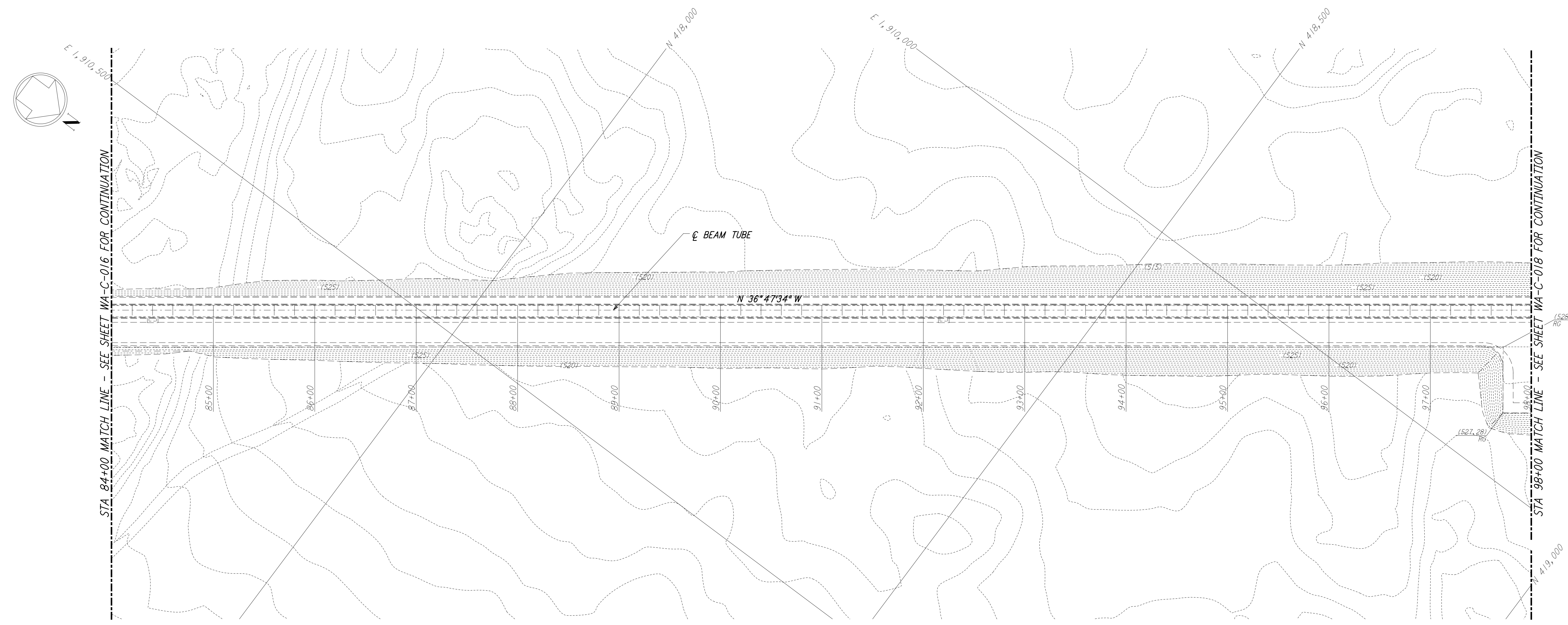


This document and the design it covers are the property of PARSONS. They are loaned only with the borrower's expressed written agreement that they will not be reproduced, copied, loaned, exhibited, or used in any other way, except by written consent from PARSONS to the borrower.

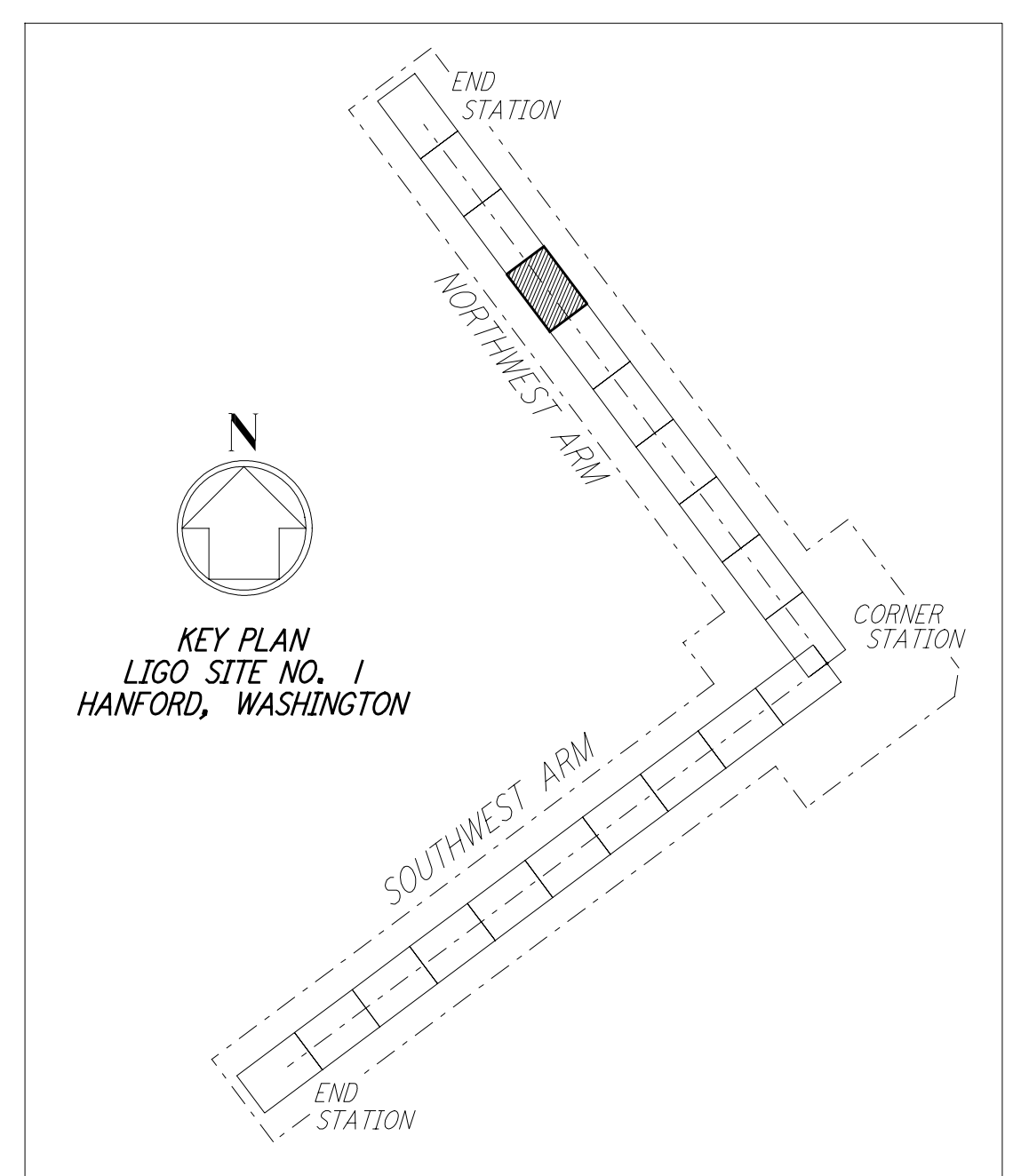


PROFILE
 SCALES: HORIZ: 1" = 50'
 VERT: 1" = 5'

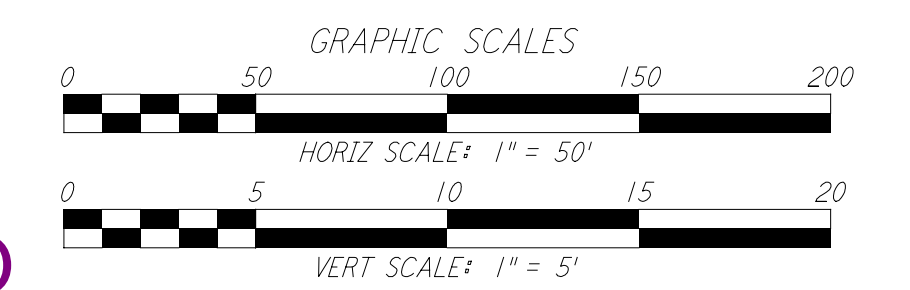


PLAN
 SCALE: 1" = 50'

NOTES:
 1. SEE SHEET WA-C-002 FOR GENERAL NOTES, LEGEND AND ABBREVIATIONS.



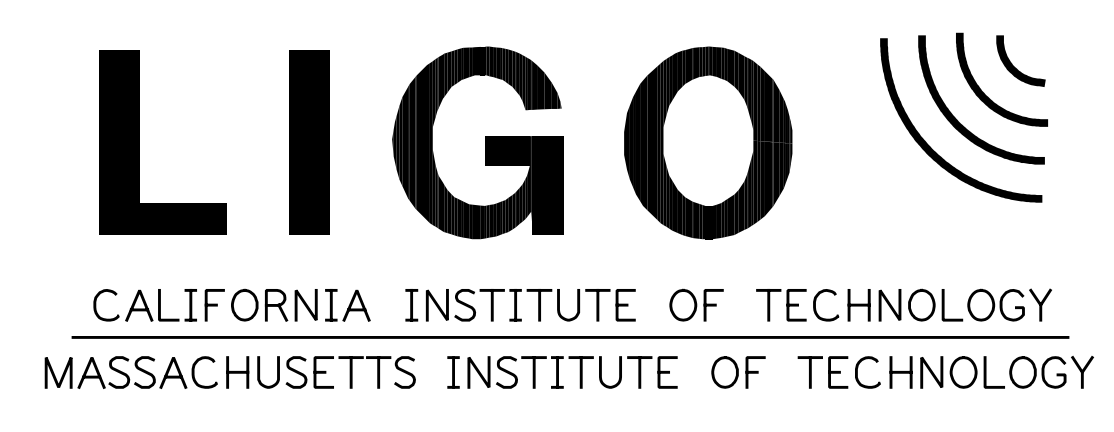
KEY PLAN
 LIGO SITE NO. 1
 HANFORD, WASHINGTON



LIGO-D960208-01-O

NO.	DATE	BY	CHKD	ENGR	PROJ	DESCRIPTION
1	5/15/98	WRB				ISSUED FOR AS-BUILT

FOR CONSTRUCTION			
DRAWN	WRB	9/28/95	
CHECKED	ML	7/9/96	
ENGINEER	JB	7/9/96	
PROJ	MDW	7/9/96	
AS-BUILT DRAWINGS			



**LASER INTERFEROMETER
 GRAVITATIONAL-WAVE OBSERVATORY
 SITE NO. 1 - HANFORD, WASHINGTON**

TITLE	AS NOTED	PROJECT NUMBER
CIVIL NORTHWEST ARM PLAN AND PROFILE STA 84+00 TO STA 98+00	PP150969	8094
SHEET NUMBER	REVISIONS	
WA - C - 017		

The Prop. 13120208 10/98 4176043\lgo\lce\wac017.dwg