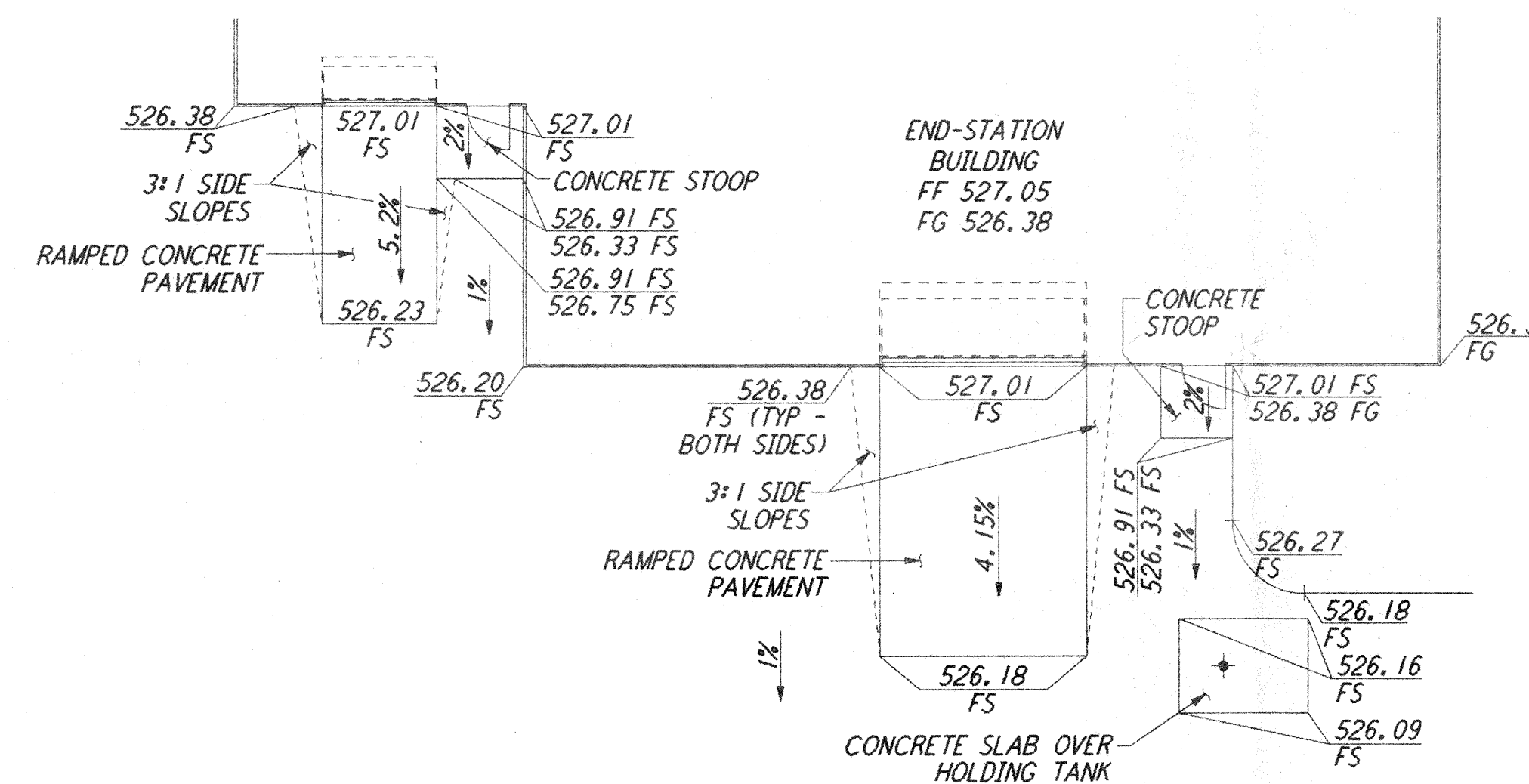
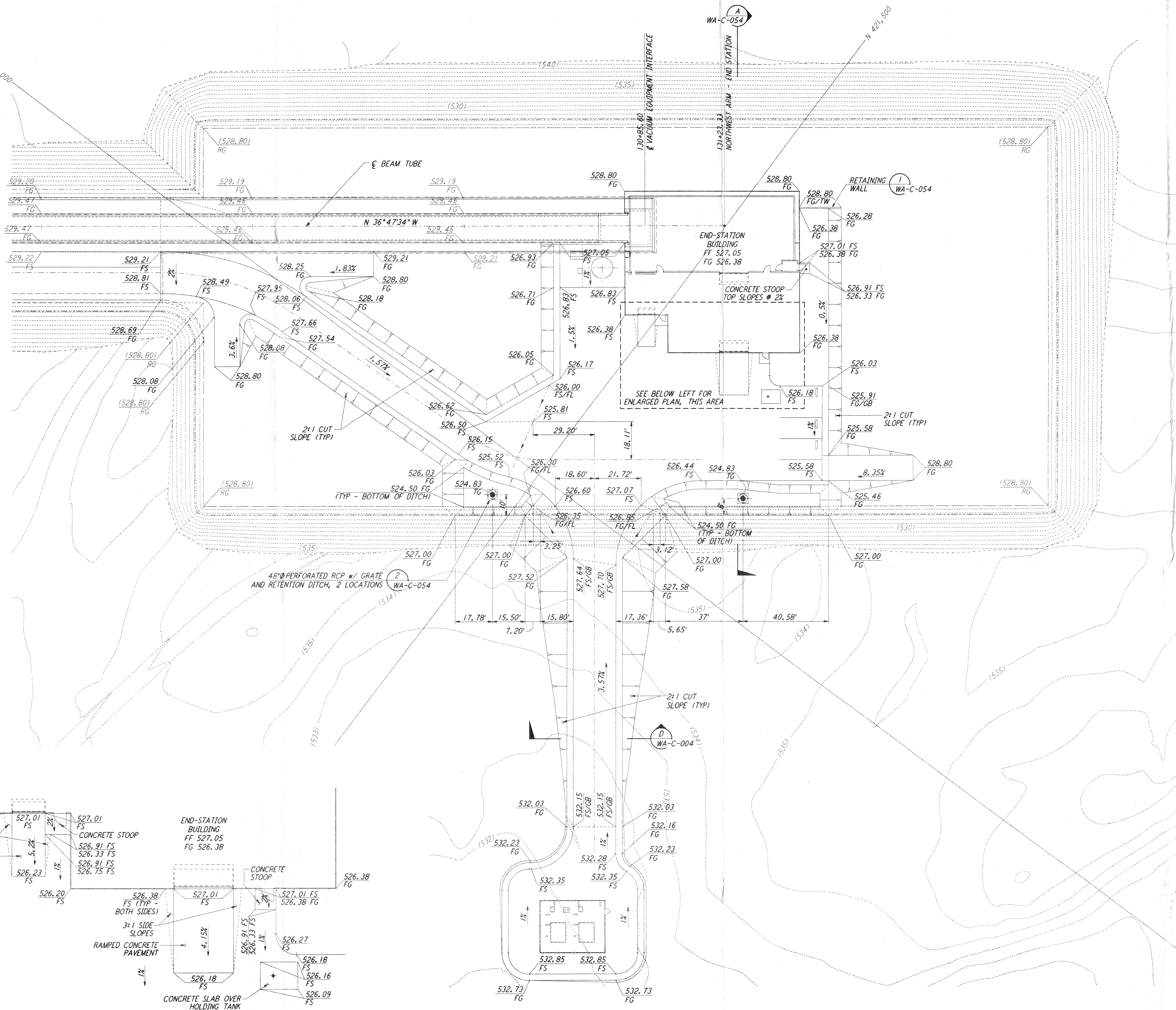
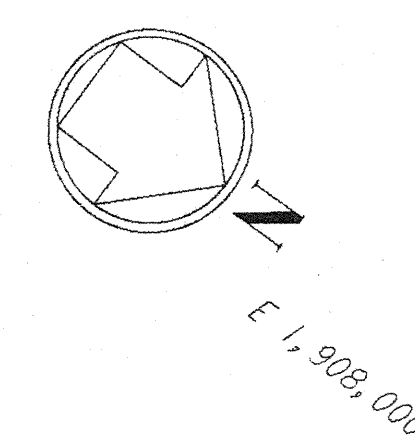
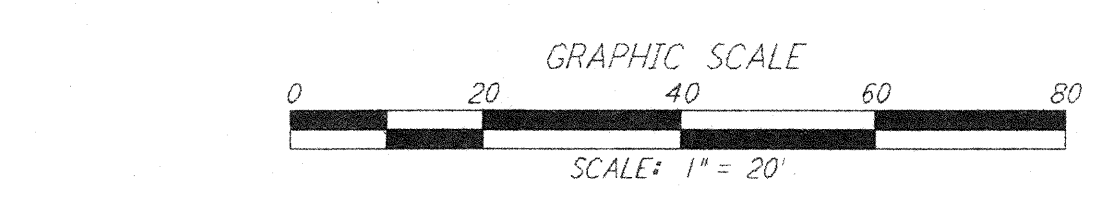
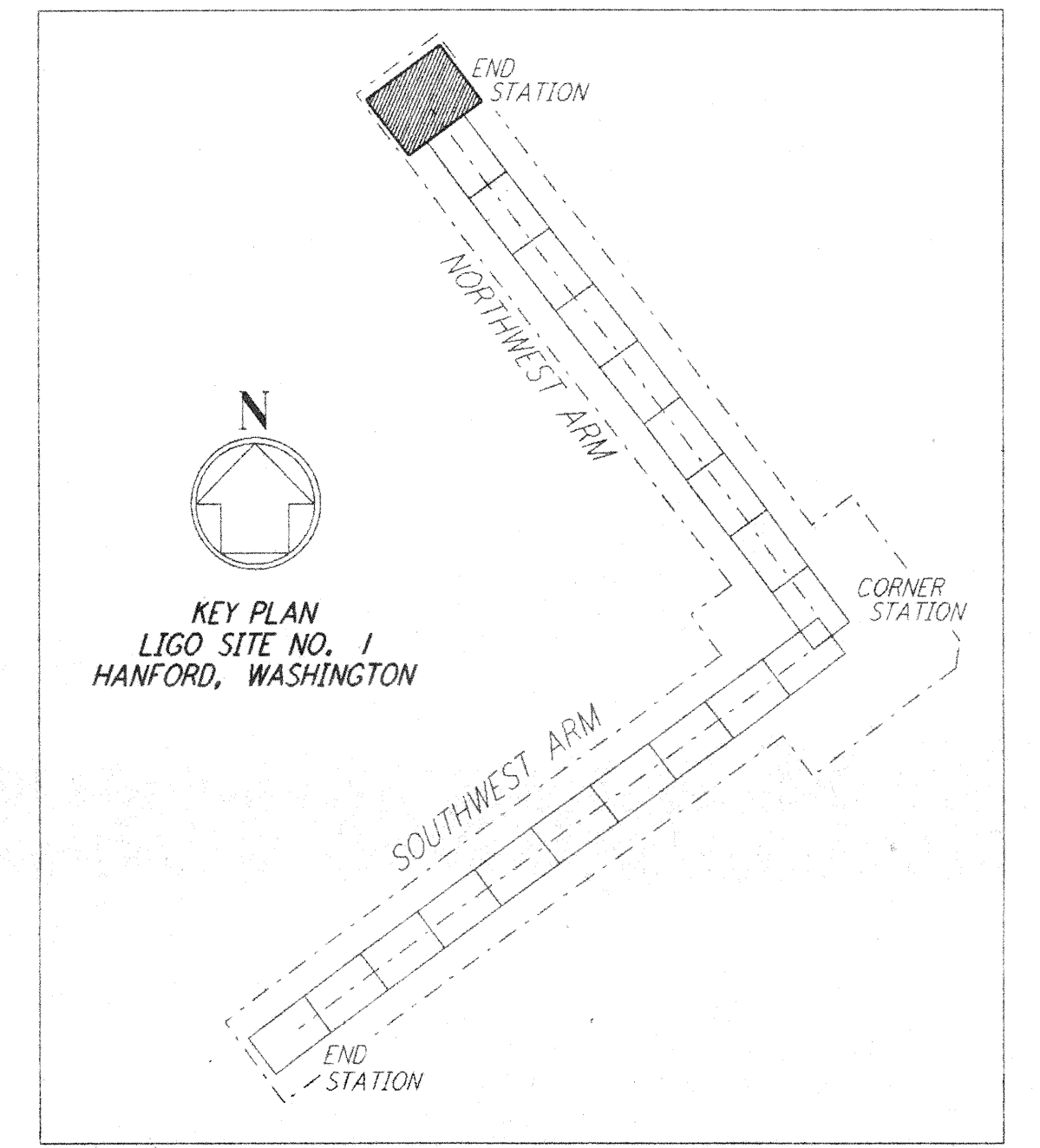


**NOTES:**  
 1. SEE SHEET WA-C-002 FOR GENERAL NOTES, LEGEND AND ABBREVIATIONS.



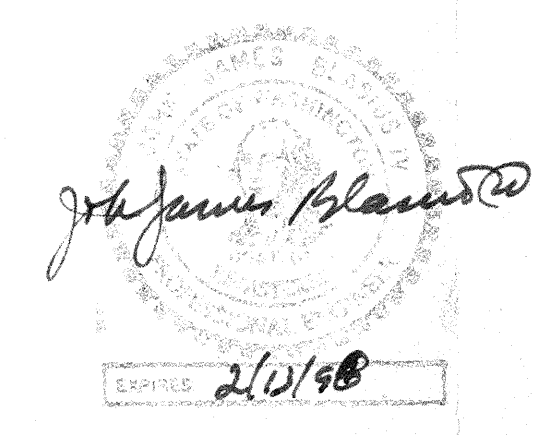
**ENLARGED PLAN**  
 SCALE: 1" = 10'



This document and the design it covers are the property of PARSONS. They are loaned only with the borrower's expressed written agreement that they will not be reproduced, copied, loaned, exhibited, or used in any other way, except by written consent from PARSONS to the borrower.

NO.	DATE	BY	CHKD	ENGR	PROJ	DESCRIPTION


FOR CONSTRUCTION  
 DRAWN WRB 9/28/95  
 CHECKED JTB 7/9/96  
 ENGINEER JTB 7/9/96  
 PROJ WAC 7/9/96




**PARSONS**  
 100 WEST WALNUT STREET  
 PASADENA, CALIFORNIA

  
 CALIFORNIA INSTITUTE OF TECHNOLOGY  
 MASSACHUSETTS INSTITUTE OF TECHNOLOGY

LASER INTERFEROMETER  
 GRAVITATIONAL-WAVE OBSERVATORY  
**SITE NO. 1 - HANFORD, WASHINGTON**

TITLE	SCALE	CONTRACT NUMBER	PROJECT NUMBER
CIVIL NORTHWEST ARM END-STATION GRADING PLAN	1" = 20'	PP150969	8094
SHEET NUMBER		REVISIONS	
<b>WA - C - 026</b>			

LIGO-D960216-00-O  
 LIGOWAF 3.BDR