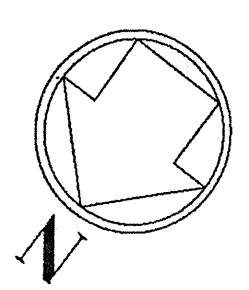
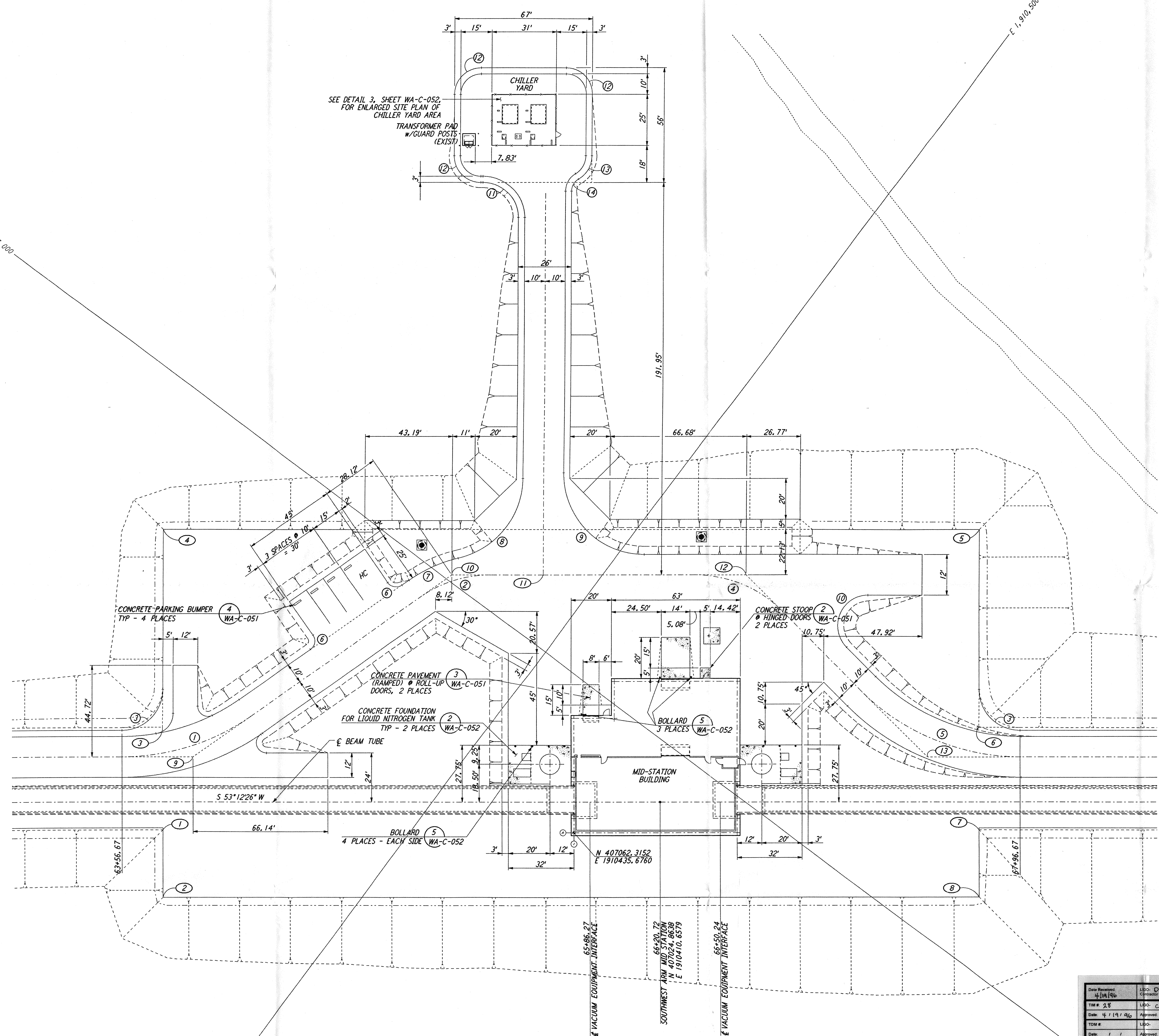


**NOTES:**  
 1. SEE SHEET WA-C-002 FOR GENERAL NOTES, LEGEND AND ABBREVIATIONS.

This document and the design it covers are the property of PARSONS. They are loaned only with the borrower's expressed written agreement that they will not be reproduced, copied, loaned, exhibited, or used in any other way, except by written consent from PARSONS to the borrower.

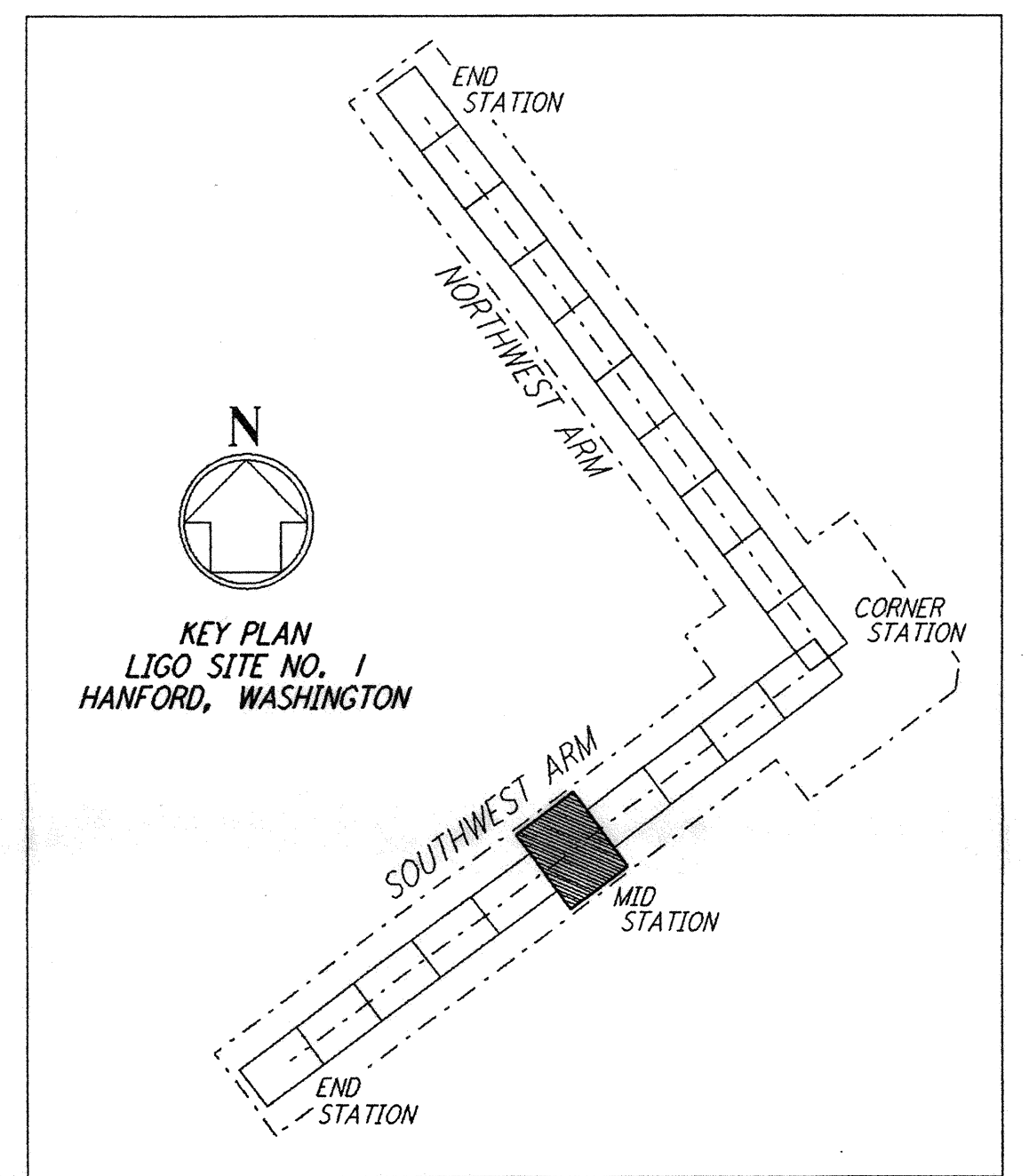


N 407,000

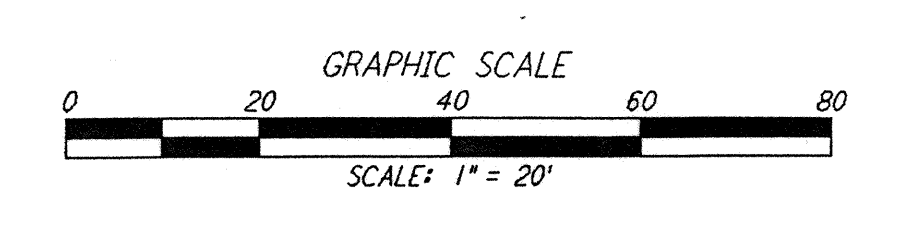


CURVE DATA						
Δ	RADIUS	LENGTH	TANGENT	REMARK		
1	35°00'00"	110'	67.19'	34.68'	⊥ ROAD	
2	35°00'00"	60'	36.65'	18.92'	⊥ ROAD	
3	90°00'00"	20'	31.42'	20.00'	EDGE OF PAD (EXIST)	
4	45°00'00"	60'	47.12'	24.85'	⊥ ROAD	
5	45°00'00"	110'	86.39'	45.56'	⊥ ROAD	
6	90°00'00"	5'	7.85'	5.00'		
7	21°54'32"	70'	26.77'	13.55'		
8	76°54'31"	40'	53.69'	31.77'		
9	90°00'00"	40'	62.83'	40.00'		
10	135°00'00"	15'	35.34'	36.21'		
11	90°00'00"	17'	26.70'	17.00'		
12	90°00'00"	13'	20.42'	13.00'		
13	60°00'00"	13'	13.61'	7.51'		
14	60°00'00"	7'	7.33'	4.04'		

COORDINATES			
Δ	NORTH	EAST	REMARK
1	407181.9780	1910597.9130	PI EDGE OF PAD (EXIST)
2	407208.4050	1910578.1490	PI EDGE OF PAD (EXIST)
3	407141.9558	1910627.8460	PI EDGE OF PAD (EXIST)
4	407064.2590	1910685.9550	PI EDGE OF PAD (EXIST)
5	406824.6893	1910365.6325	PI EDGE OF PAD (EXIST)
6	406902.3690	1910307.5359	PI EDGE OF PAD (EXIST)
7	406942.4090	1910277.5900	PI EDGE OF PAD (EXIST)
8	406968.8348	1910257.8261	PI EDGE OF PAD (EXIST)
9	407144.6223	1910607.5170	PI ⊥ ROAD
10	406996.8810	1910558.9213	PI ⊥ ROAD
11	406970.5250	1910523.6806	⊥ ROAD INTERSECTION
12	406910.8228	1910443.8545	PI ⊥ ROAD
13	406928.8324	1910318.9889	PI ⊥ ROAD



Date Received: 4/10/96	Lib: D 960 228 - B - D
Time: 2 1/2	Contract #: WA-C-041, 686 B
Date: 4/19/96	Approved: C 960 957 - 00 - V
TDM #	Lib:
Date: / /	Approved:
Gen'l Transmittal	Lib:
Date: / /	Approved:



NO.	DATE	BY	CHKD	ENGR	PROJ	DESCRIPTION
B	4/19/96	WRB				FINAL DESIGN REVIEW & BID
A	10/31/95	WRB				PRELIMINARY DESIGN REVIEW

DRAWN	WRB
CHECKED	
ENGINEER	
PROJ	

100 WEST WALNUT STREET  
PASADENA, CALIFORNIA

CALIFORNIA INSTITUTE OF TECHNOLOGY  
MASSACHUSETTS INSTITUTE OF TECHNOLOGY

LASER INTERFEROMETER  
GRAVITATIONAL-WAVE OBSERVATORY  
SITE NO. 1 - HANFORD, WASHINGTON

CIVIL  
SOUTHWEST ARM  
MID-STATION  
PLOT PLAN

SCALE: 1" = 20'

CONTRACT NUMBER: PP150969  
PROJECT NUMBER: 8094

SHEET NUMBER: **WA-C-041**