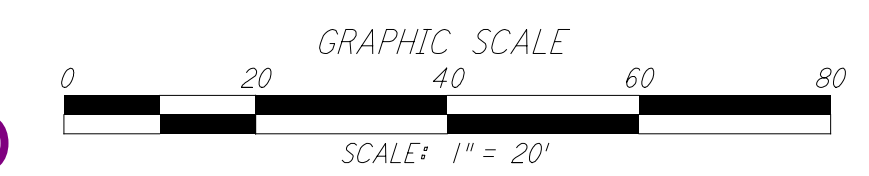
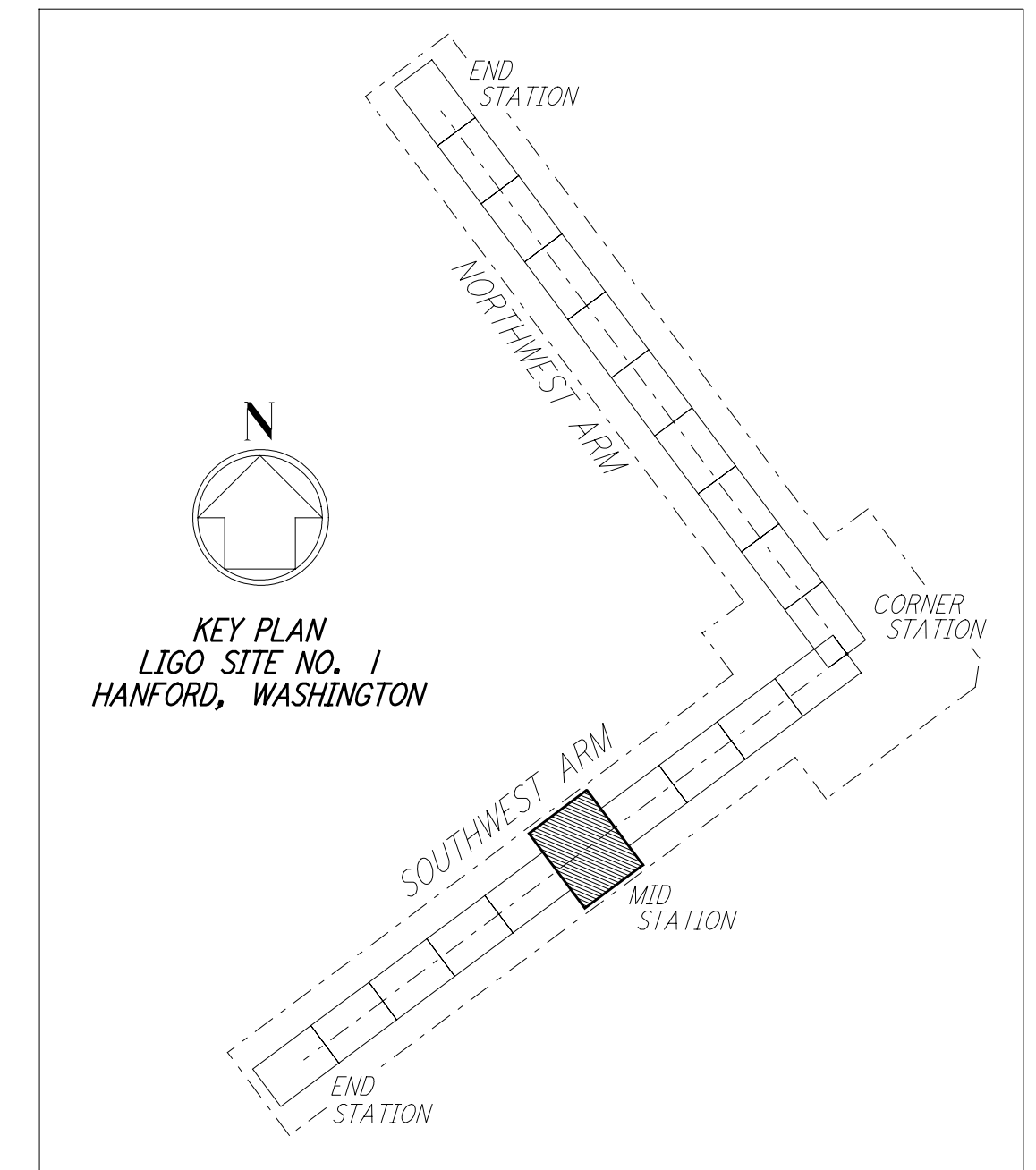
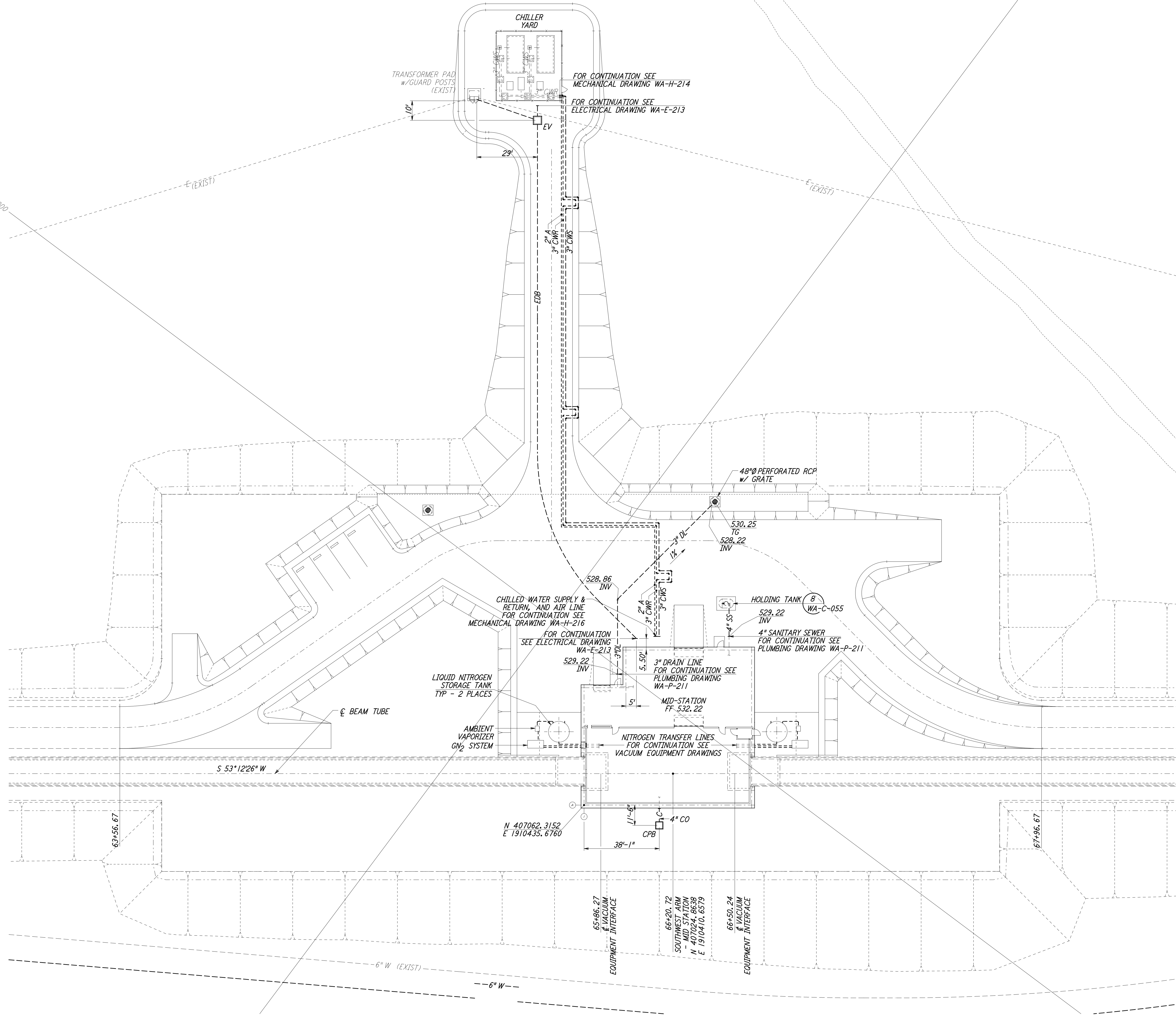
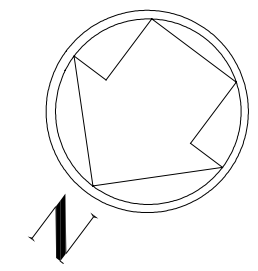


**NOTES:**

1. SEE SHEET WA-C-002 FOR GENERAL NOTES, LEGEND AND ABBREVIATIONS.



LIGO-D960230-01-O

This document and the design it covers are the property of PARSONS. They are loaned only with the borrower's expressed written agreement that they will not be reproduced, copied, loaned, exhibited, or used in any other way, except by written consent from PARSONS to the borrower.

NO.	DATE	BY	CHKD	ENGR	PROJ	DESCRIPTION
1	5/15/98	WRB				ISSUED FOR AS-BUILT

FOR CONSTRUCTION		
DRAWN	WRB	9/28/95
CHECKED	ML	7/9/96
ENGINEER	JB	7/9/96
PROJ	MDW	7/9/96

**AS-BUILT DRAWINGS**

100 WEST WALNUT STREET  
PASADENA, CALIFORNIA

CALIFORNIA INSTITUTE OF TECHNOLOGY  
MASSACHUSETTS INSTITUTE OF TECHNOLOGY

**LASER INTERFEROMETER  
GRAVITATIONAL-WAVE OBSERVATORY  
SITE NO. 1 - HANFORD, WASHINGTON**

TITLE	CIVIL SOUTHWEST ARM MID-STATION UTILITY PLAN	SCALE	1" = 20'	PROJECT NUMBER	PP150969	PROPERTY NUMBER	8094
SHEET NUMBER	<b>WA - C - 043</b>		REVISIONS				