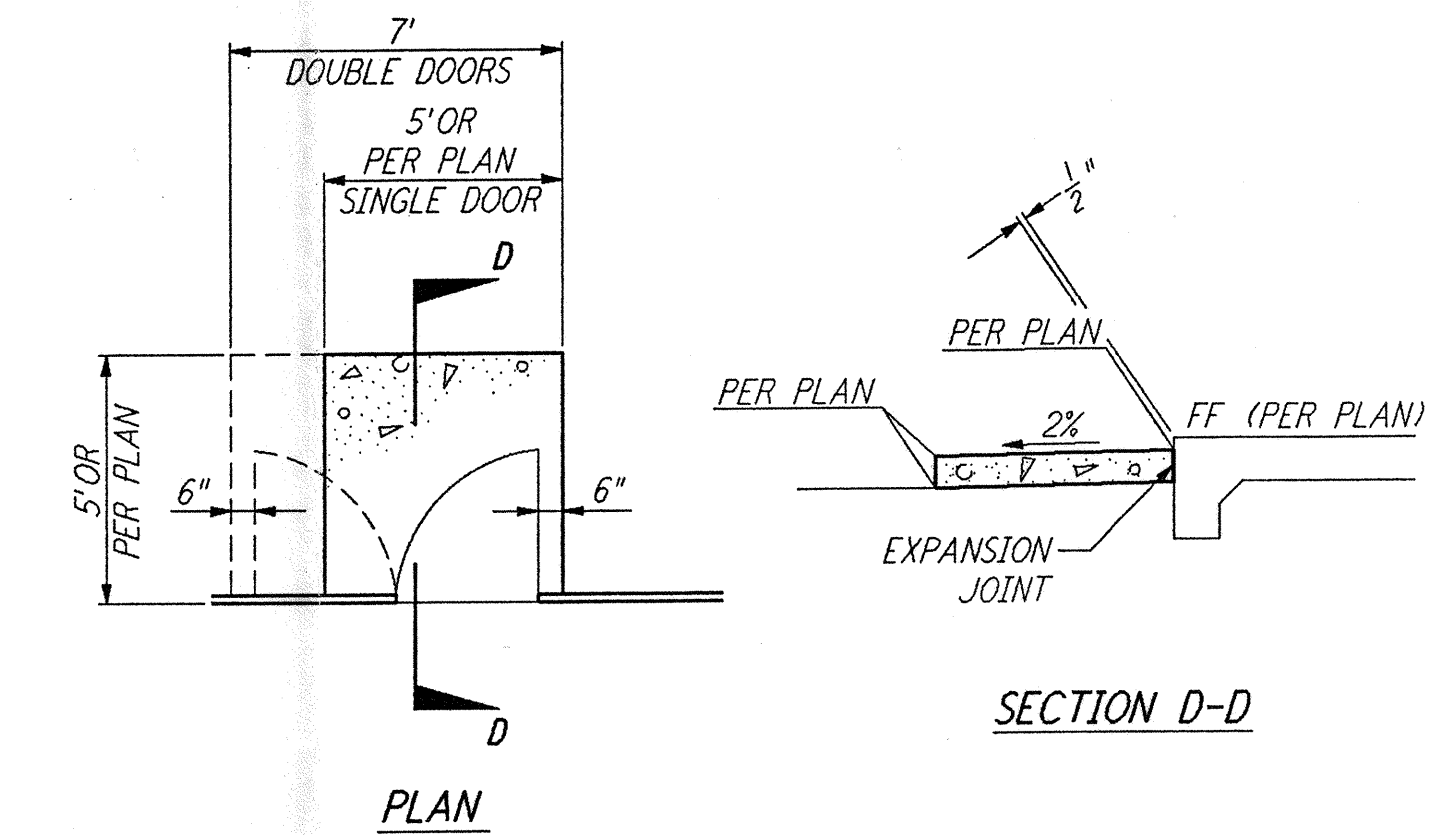
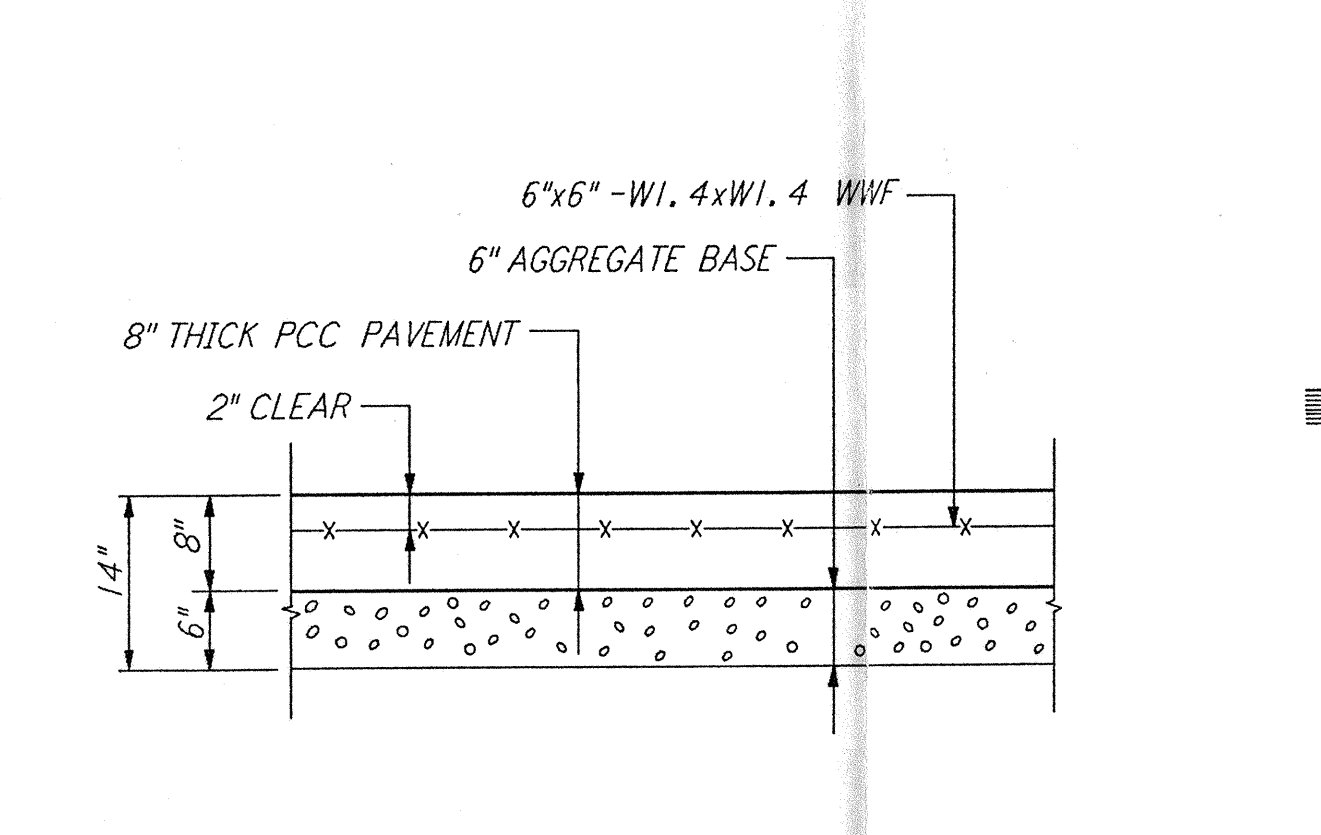


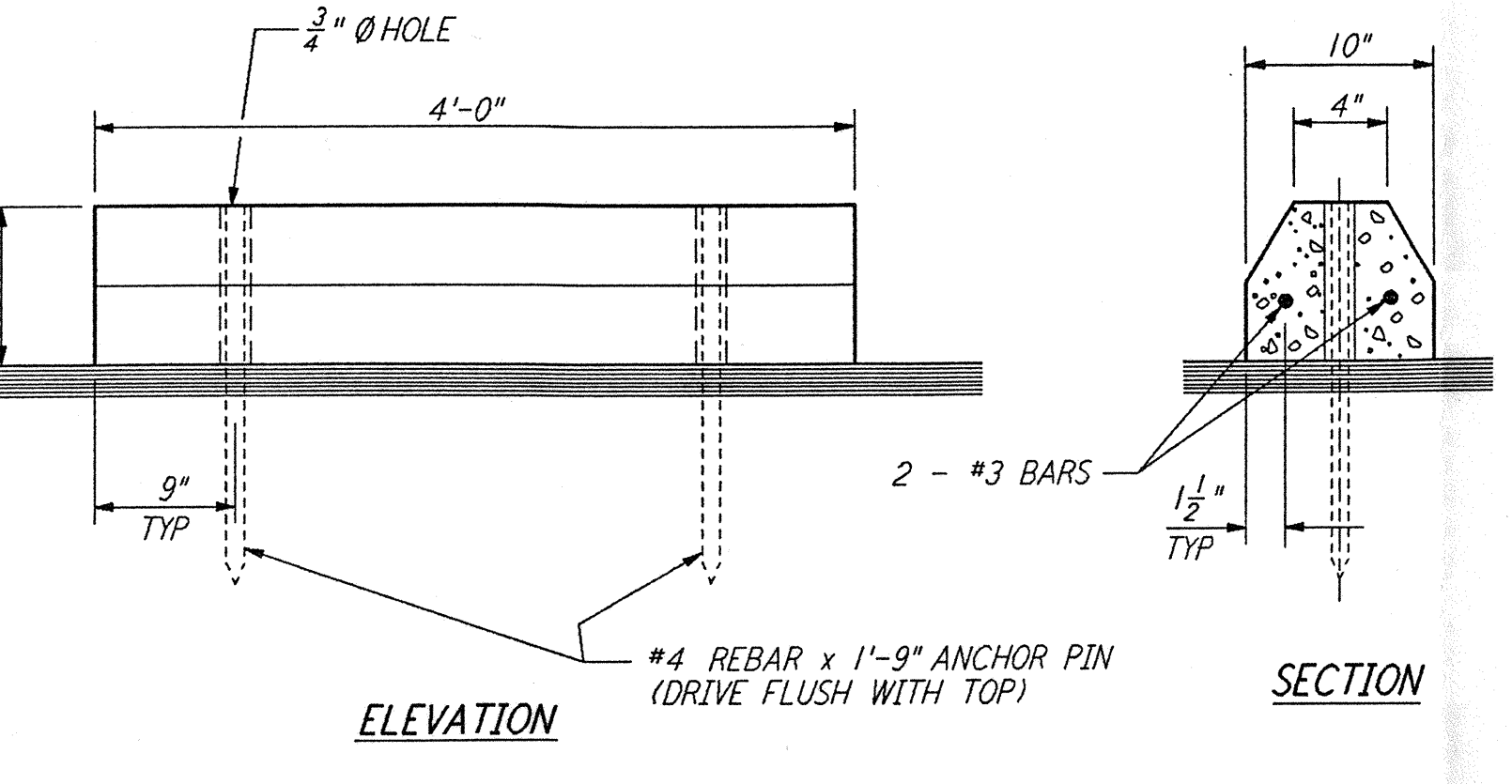
CONCRETE WALKWAY (1) REF: WA-C-051, WA-C-006, WA-C-021, WA-C-025, WA-C-041, WA-C-045, WA-C-505
NOT TO SCALE



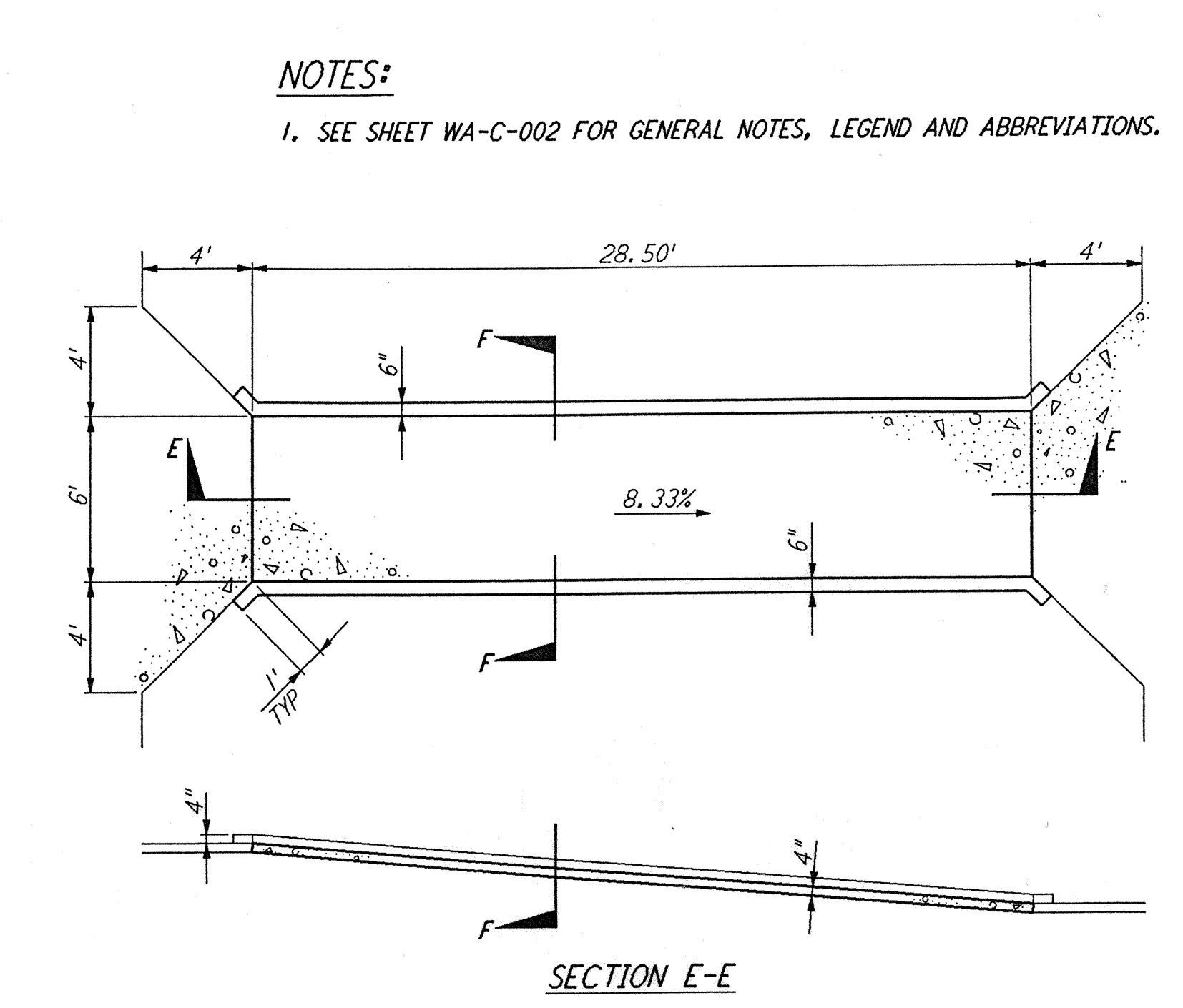
CONCRETE STOOP (2) REF: WA-C-051, WA-C-006, WA-C-021, WA-C-025, WA-C-041, WA-C-045, WA-C-505
NOT TO SCALE



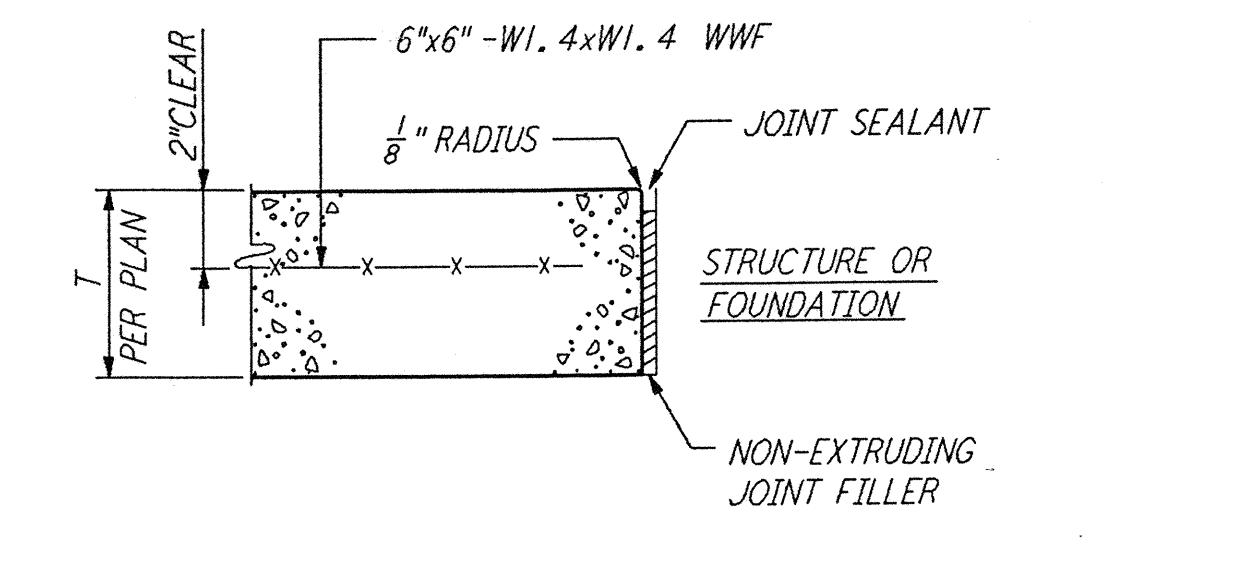
CONCRETE PAVEMENT (3) REF: WA-C-051, WA-C-006, WA-C-021, WA-C-025, WA-C-041, WA-C-045, WA-C-505
NOT TO SCALE



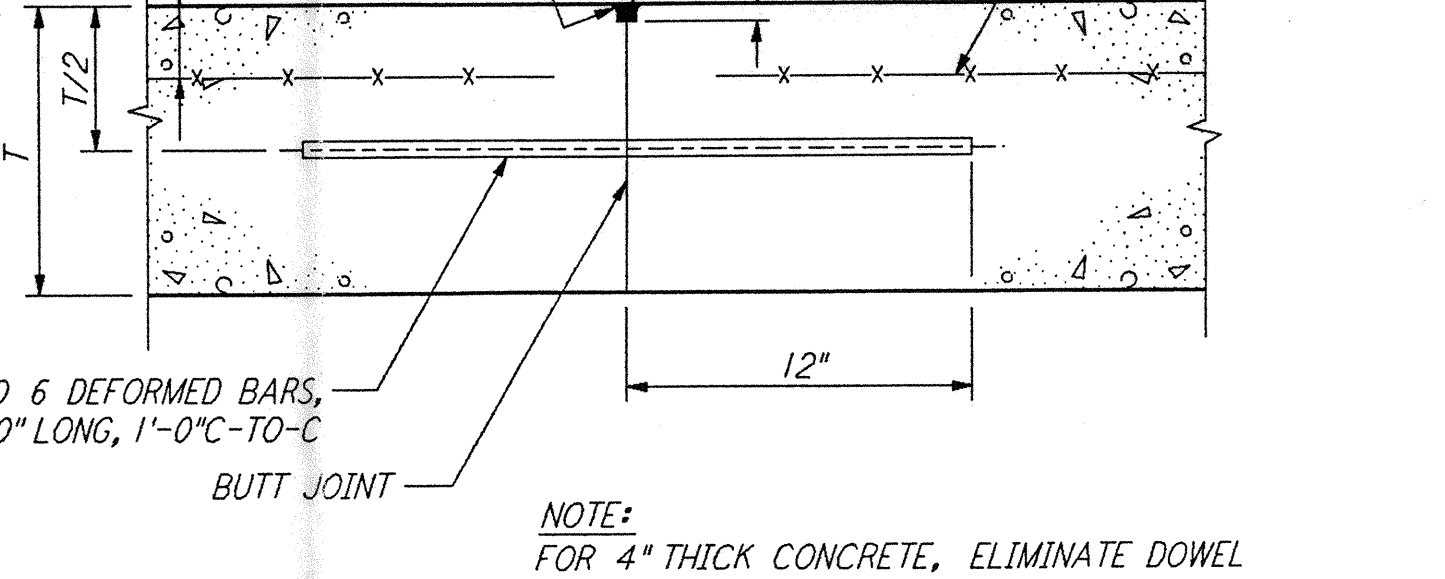
CONCRETE PARKING BUMPER (4) REF: WA-C-051, WA-C-006, WA-C-021, WA-C-025, WA-C-041, WA-C-045, WA-C-505
NOT TO SCALE



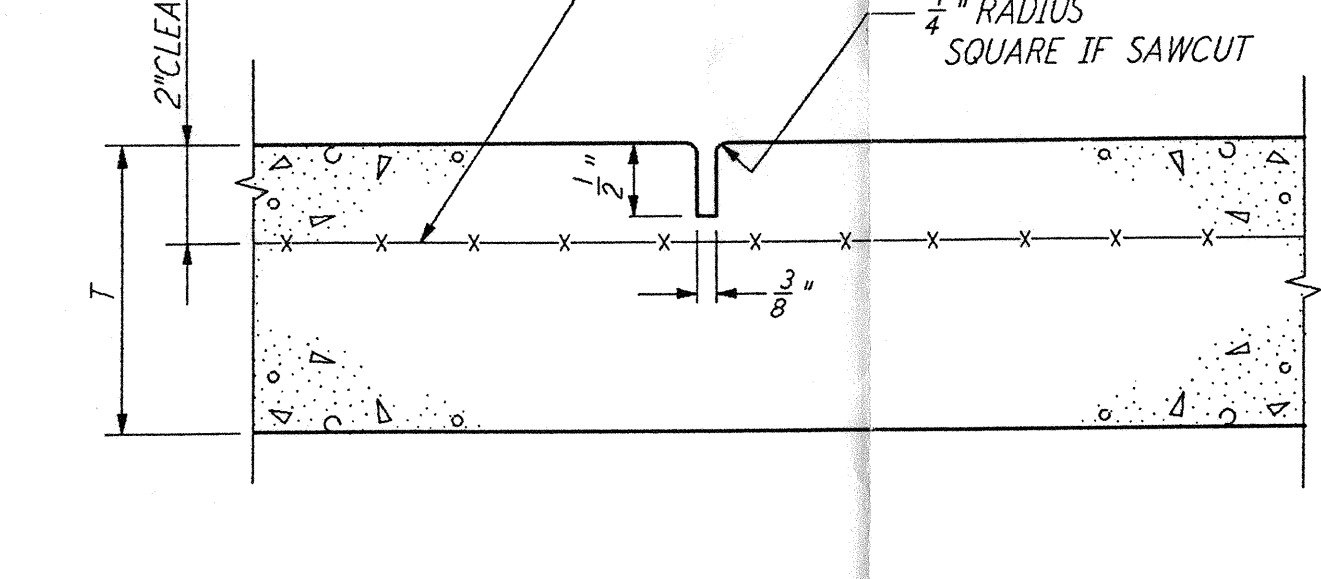
CONCRETE RAMP (9) REF: WA-C-051, WA-C-006, WA-C-021, WA-C-025, WA-C-041, WA-C-045, WA-C-505
NOT TO SCALE



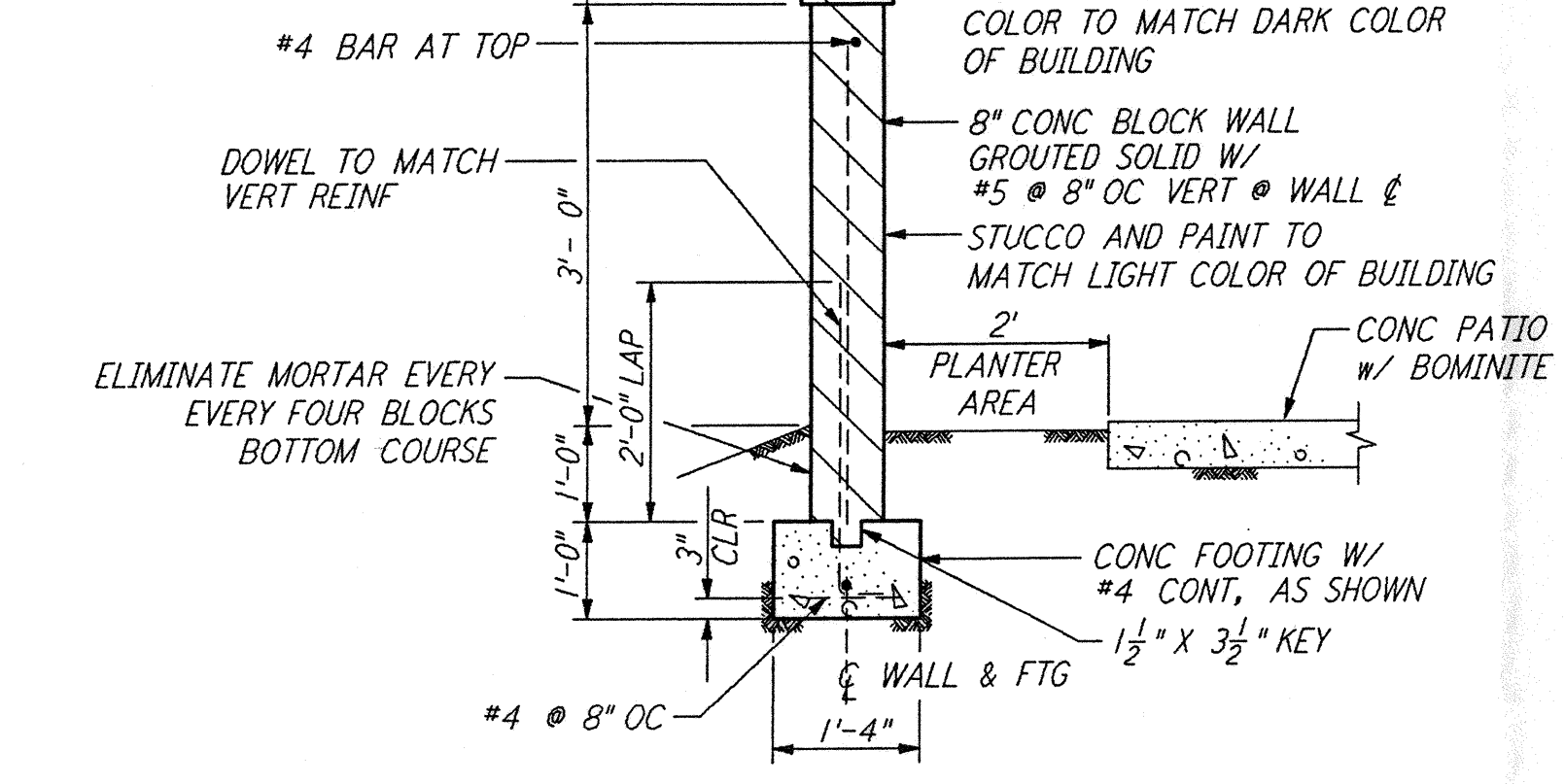
EXPANSION JOINT (EJ) (5) REF: WA-C-051, WA-C-006, WA-C-021, WA-C-025, WA-C-041, WA-C-045, WA-C-505
NOT TO SCALE



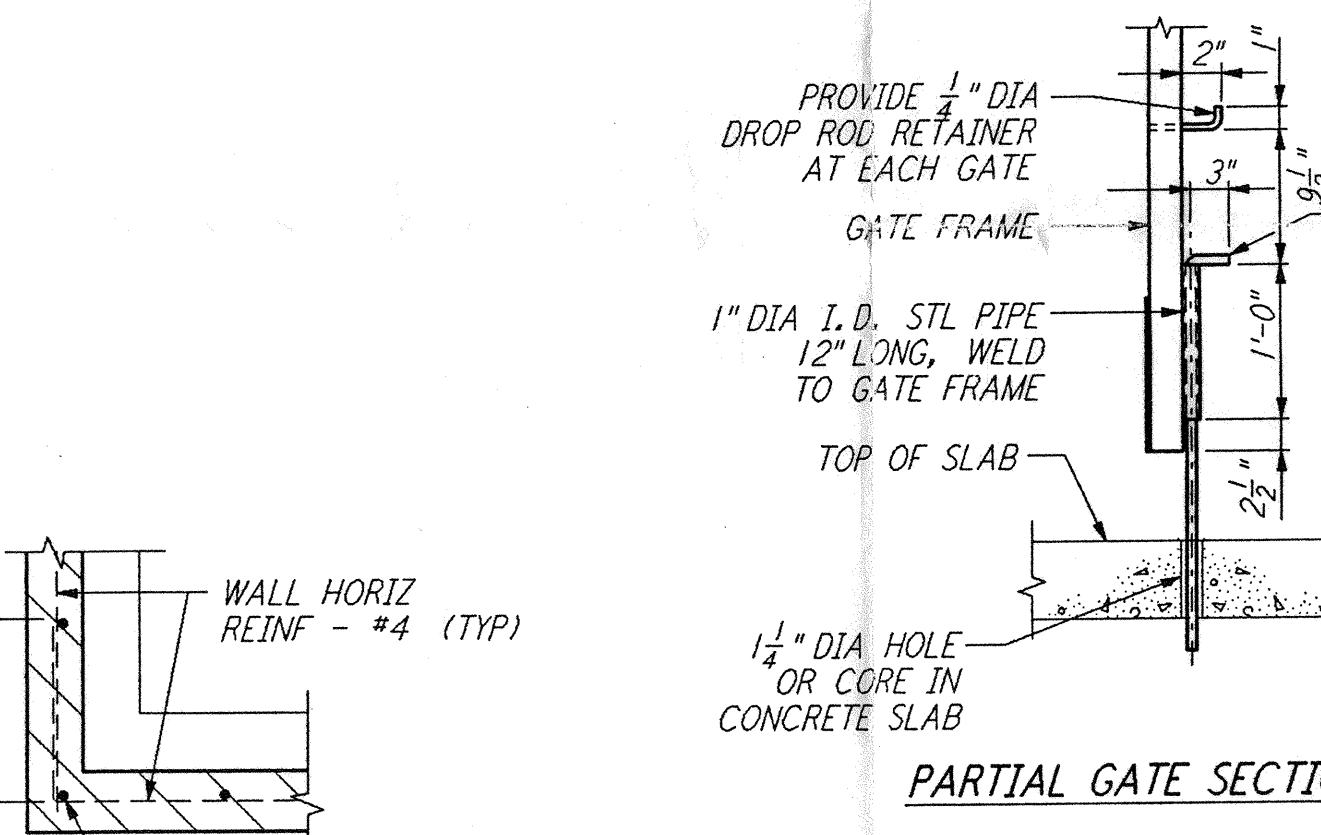
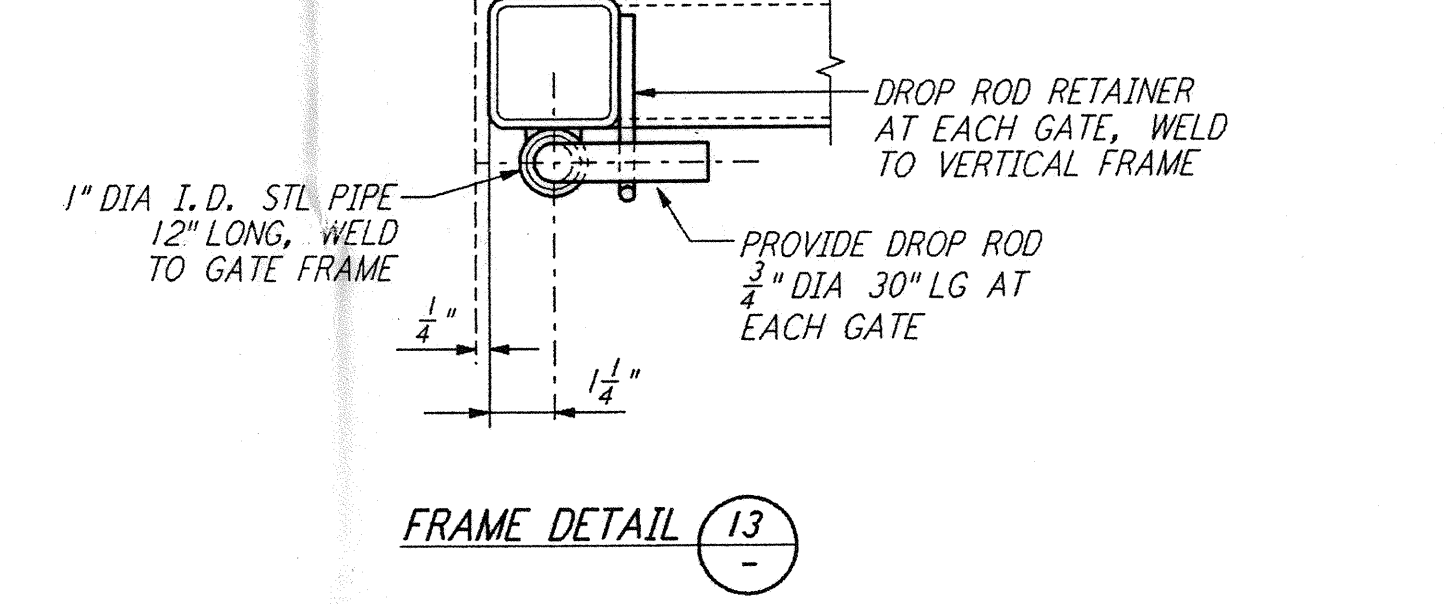
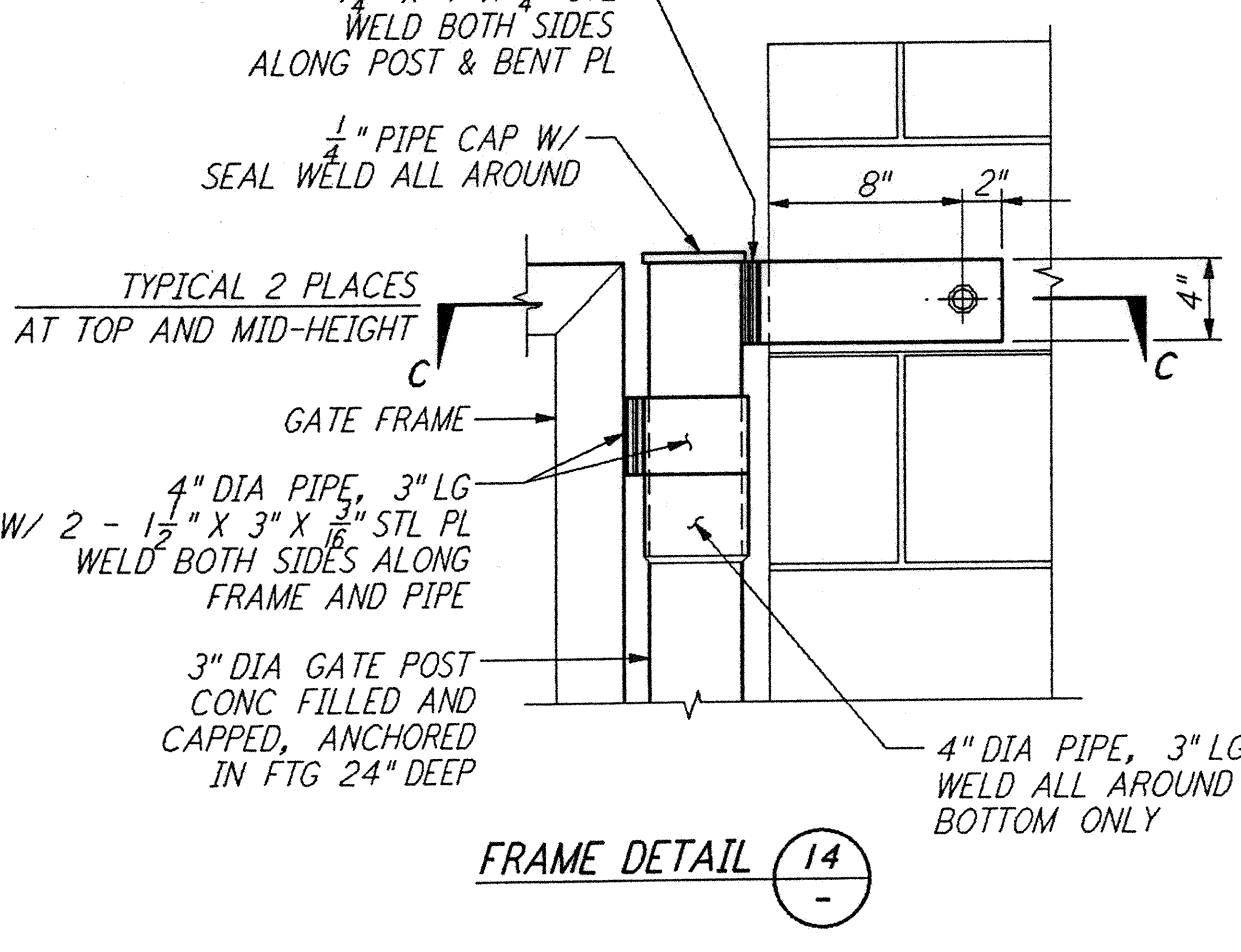
CONSTRUCTION JOINT (CJ) (6) REF: WA-C-051, WA-C-006, WA-C-021, WA-C-025, WA-C-041, WA-C-045, WA-C-505
NOT TO SCALE (SEPARATE POURS OR END OF DAY)



CONTRACTION JOINT (CO) (7) REF: WA-C-051, WA-C-006, WA-C-021, WA-C-025, WA-C-041, WA-C-045, WA-C-505
NOT TO SCALE (SPACING: 20' MAX)

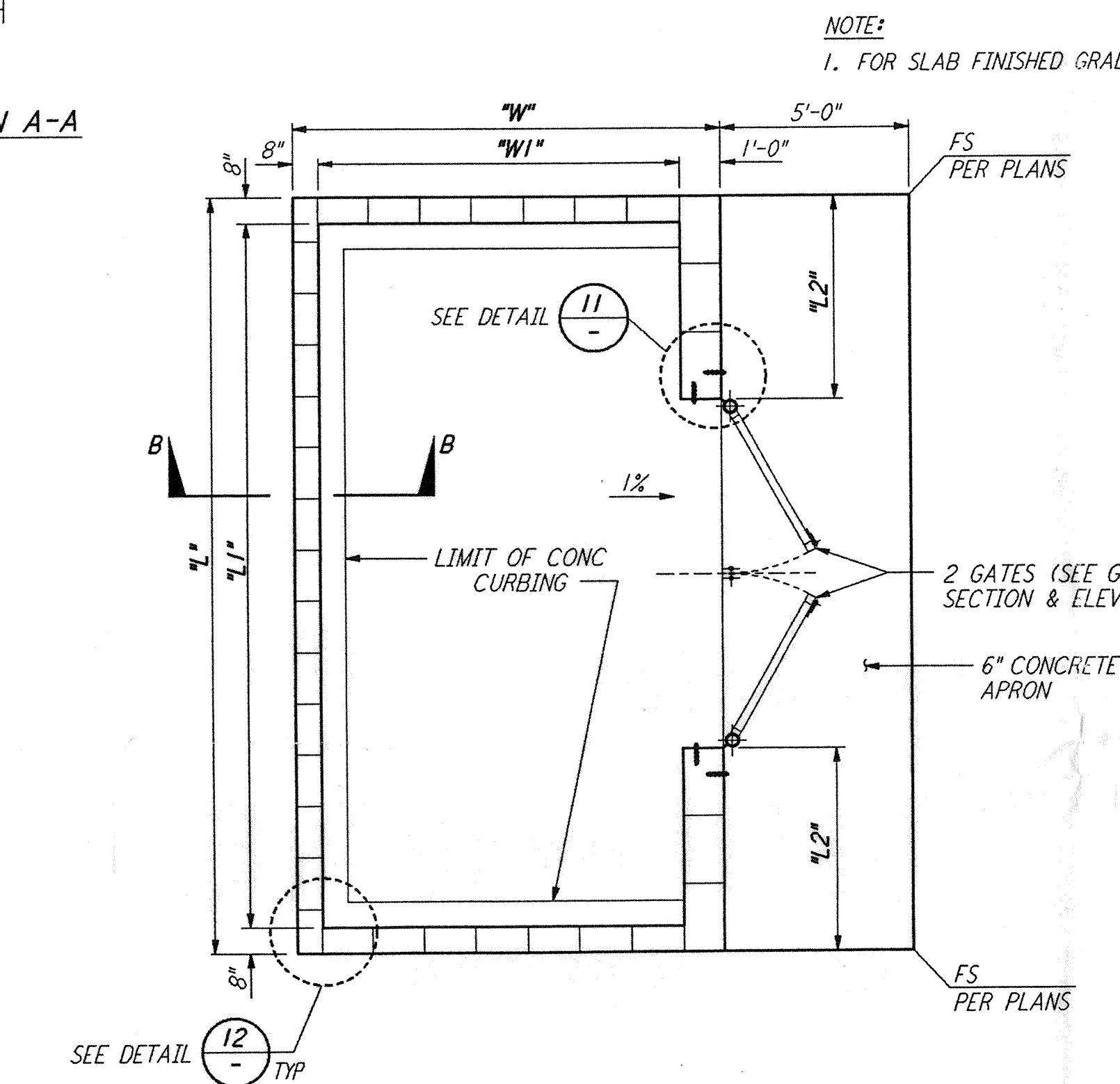
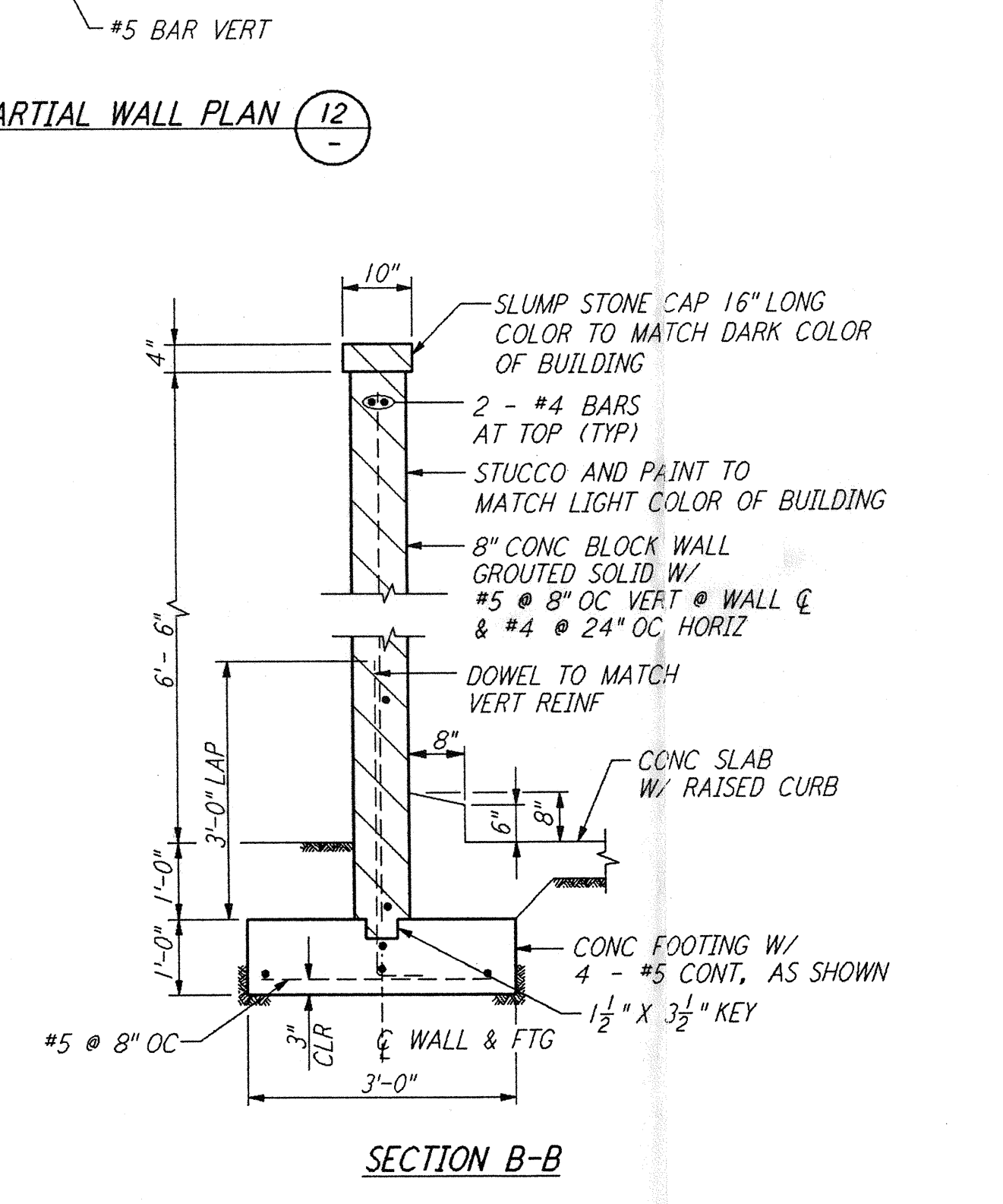
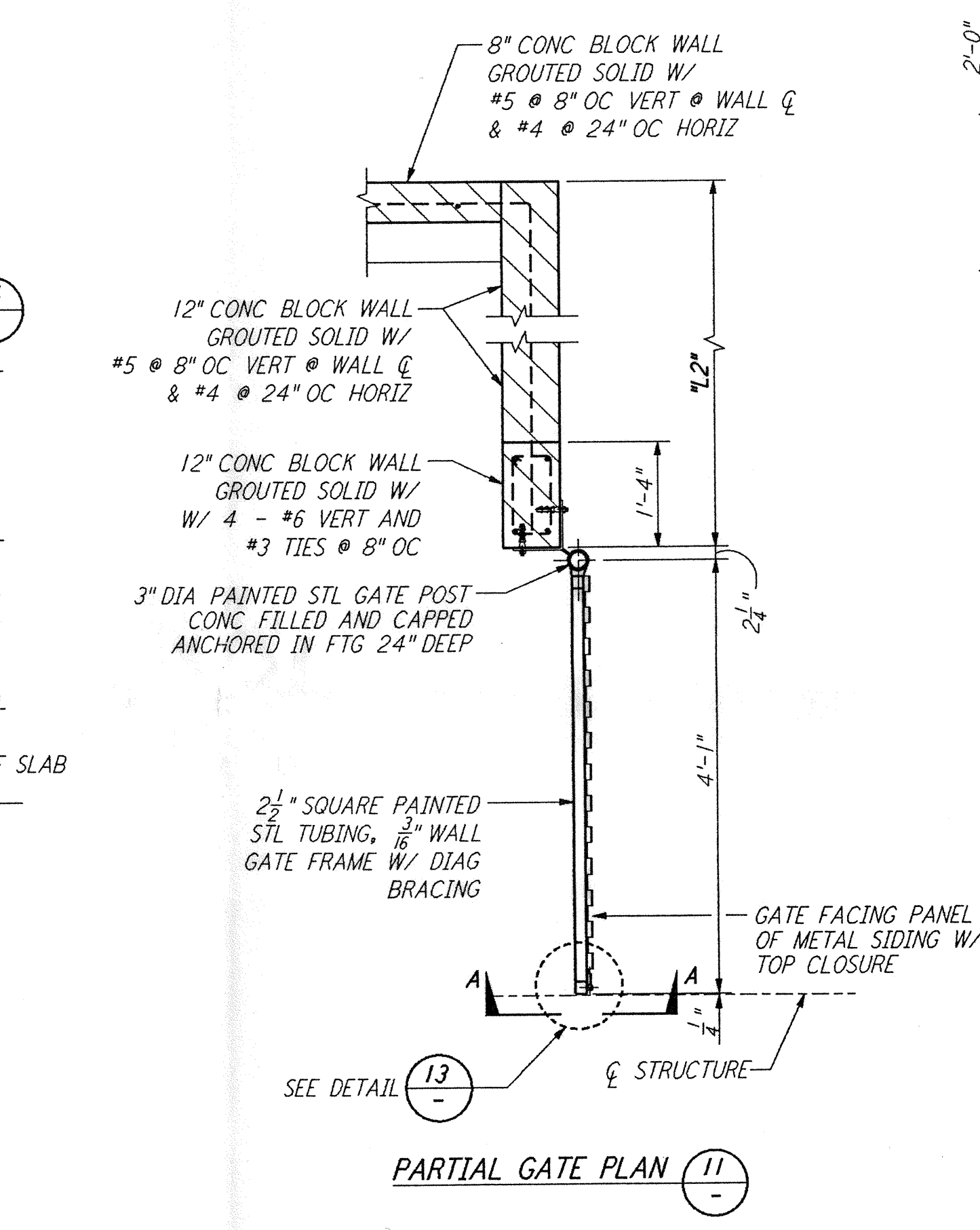
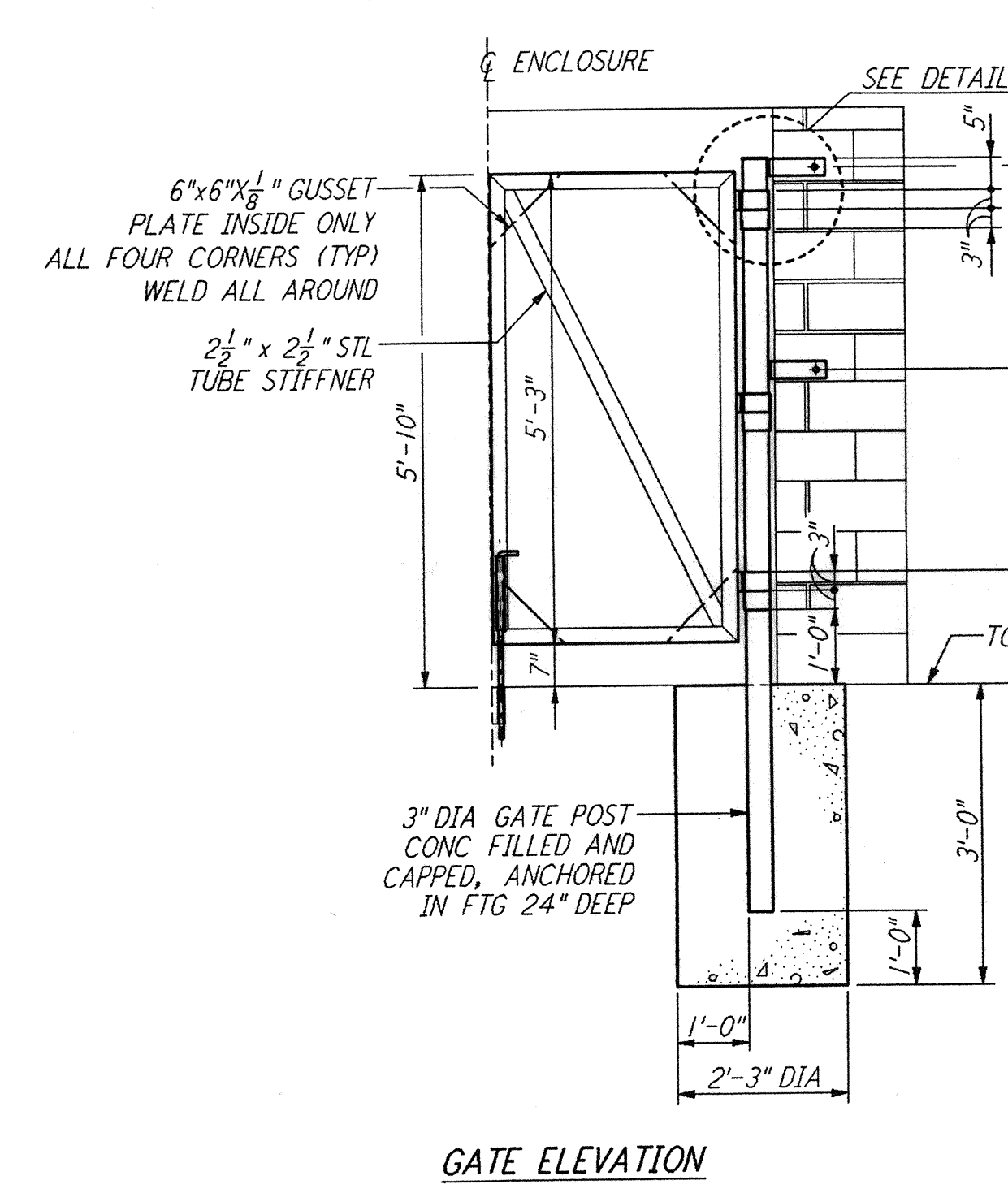
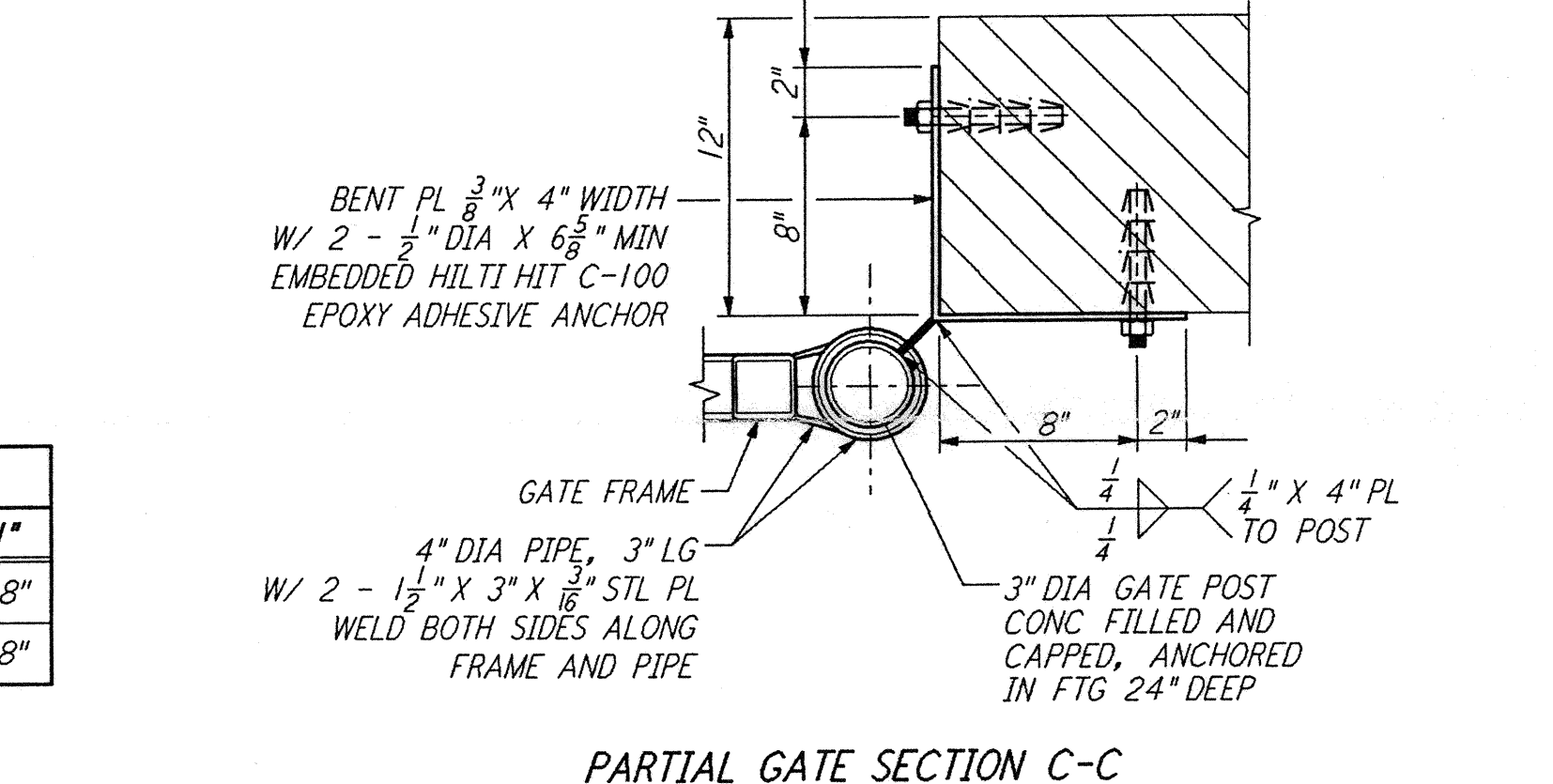


PATIO WALL (8) REF: WA-C-051, WA-C-006, WA-C-021, WA-C-025, WA-C-041, WA-C-045, WA-C-505
NOT TO SCALE

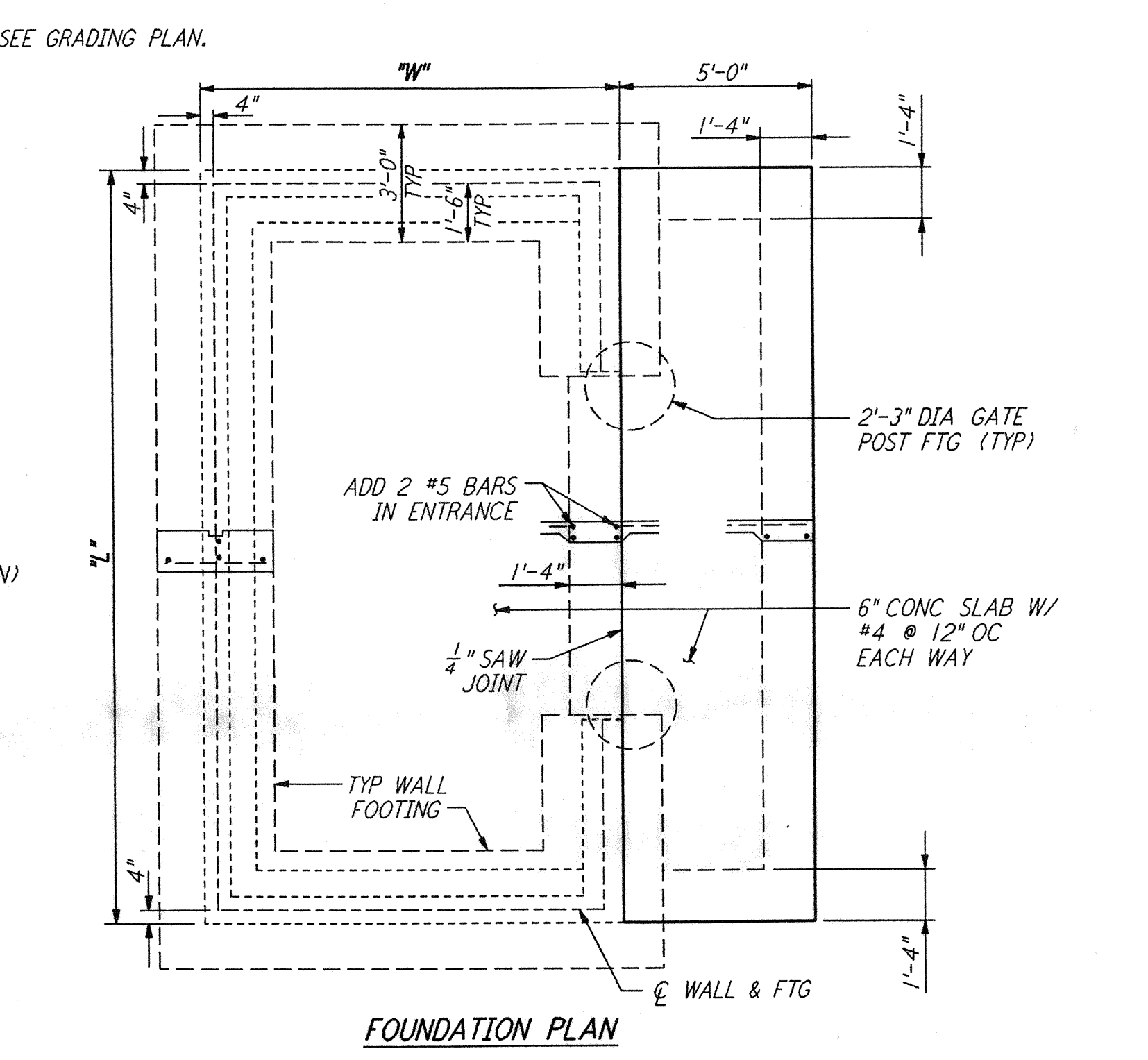


BLOCK WALL ENCLOSURE DIMENSIONS

	1'	1 1/2'	2'	3'	4'
HAZARDOUS WASTE STORAGE	30'	28'-4"	10'-8 1/2"	15'	13'-8"
TRASH ENCLOSURE	18'	16'-4"	4'-8 1/2"	10'	8'-8"



BLOCK WALL ENCLOSURE FOR TRASH AND HAZARDOUS WASTE STORAGE (10) REF: WA-C-051, WA-C-006, WA-C-021, WA-C-025, WA-C-041, WA-C-045, WA-C-505
NOT TO SCALE



FOUNDATION PLAN

This document and the design it covers are the property of PARSONS. They are loaned only with the borrower's expressed written agreement that they will not be reproduced, copied, loaned, exhibited, or used in any other way, except by written consent from PARSONS to the borrower.

NO.	DATE	BY	CHKD	ENGR	PROJ	DESCRIPTION
B	4/12/96	WRB				FINAL DESIGN REVIEW & BID
A	4/19/96	WRB				FINAL DESIGN REVIEW & BID

DRAWN	WRB
CHECKED	
ENGINEER	
PROJ	

PARSONS
100 WEST WALNUT STREET
PASADENA, CALIFORNIA

LIGO
CALIFORNIA INSTITUTE OF TECHNOLOGY
MASSACHUSETTS INSTITUTE OF TECHNOLOGY

LASER INTERFEROMETER
GRAVITATIONAL-WAVE OBSERVATORY
SITE NO. 1 - HANFORD, WASHINGTON

CIVIL
SITWORK DETAILS
SHEET 1

SCALE: AS NOTED
CONTRACT NUMBER: PPI50969
PROJECT NUMBER: 8094

WA-C-051