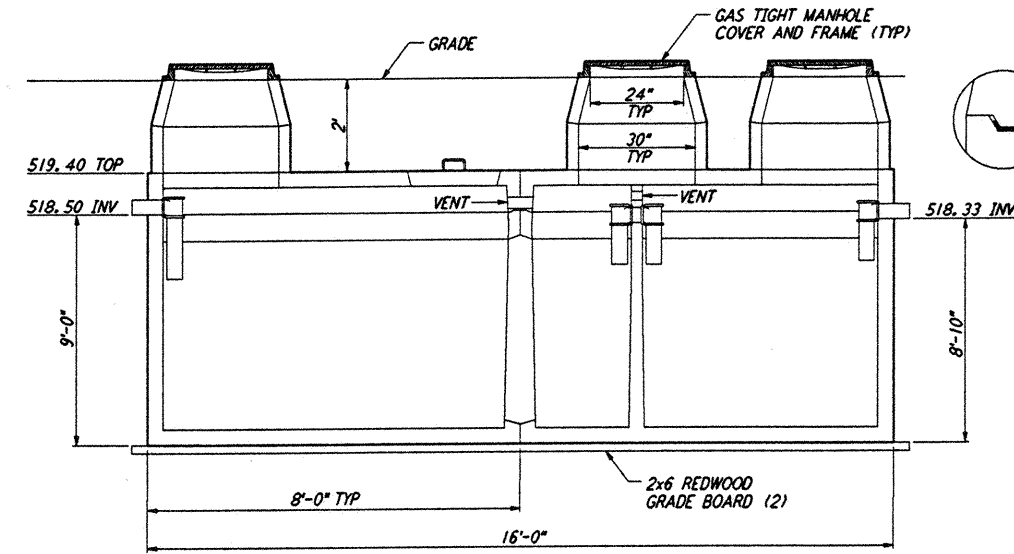
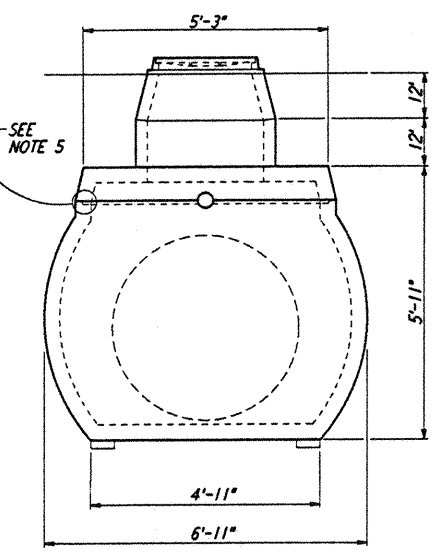


PLAN VIEW

- NOTES:**
- MATERIAL SPECIFICATIONS: (SEE NOTE 3)
 - CONCRETE, PORTLAND CEMENT TYPE II, MINIMUM COMPRESSIVE STRENGTH 3000 PSI AT 28 DAYS.
 - REINFORCING BARS INTERMEDIATE GRADE ASTM A615.
 - REINFORCING WELDED WIRE MESH ASTM A185.
 - PRECAST UNIT COATED INSIDE AND OUT WITH AN APPROVED PROTECTIVE COATING.
 - PRECAST UNIT TO BE PLACED ON NATURAL SOIL OR APPROVED COMPACTED FILL.
 - INTERNAL FITTINGS 4" SEWER AND DRAIN U.P.C. APPROVED.
 - STANDARD GROUND WATER SEAL - BUTYL ROPE MASTIC OR CEMENT MORTAR.

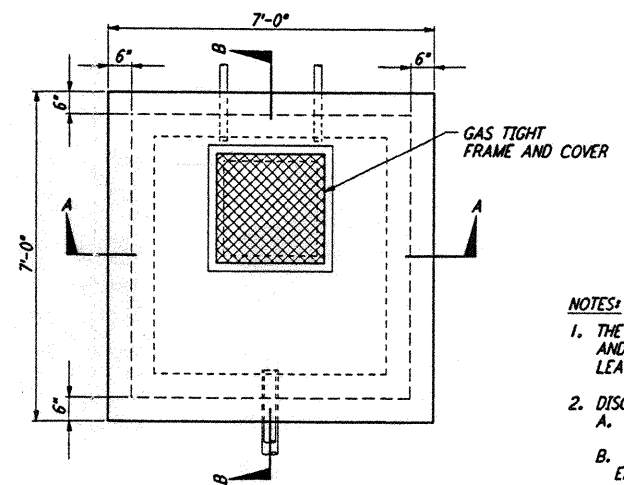


LONGITUDINAL SECTION



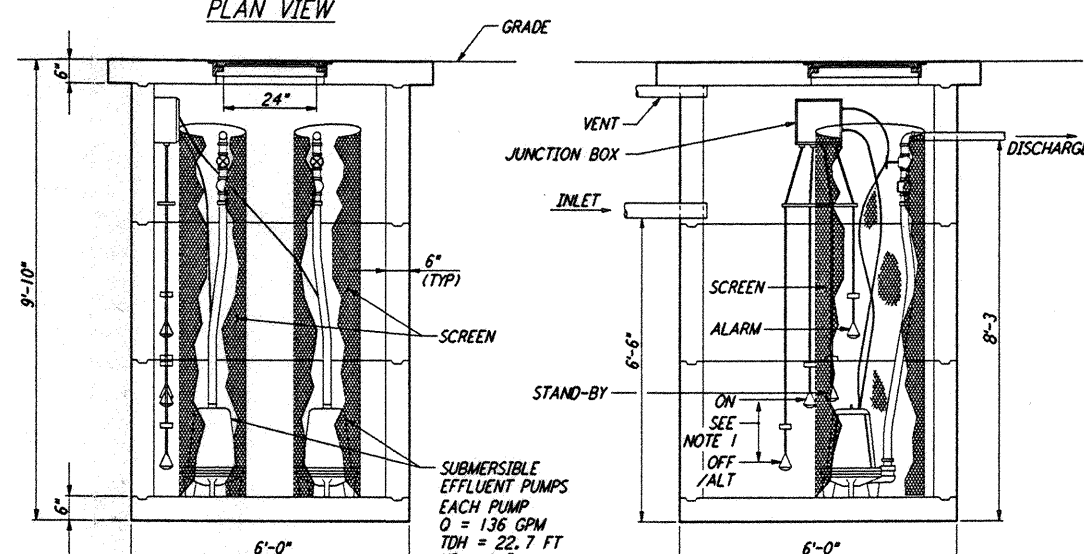
END VIEW

SEPTIC TANK (4500 GALLONS) (1) REF WA-C-056 WA-C-510
 NOT TO SCALE (SEE NOTE 4)



PLAN VIEW

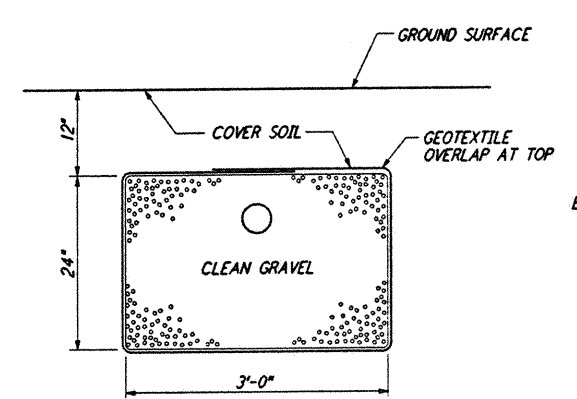
- NOTES:**
- THE VOLUME CONTAINED BETWEEN THE OFF/ALT FLOAT AND THE ON FLOAT SHOULD BE EQUAL TO 75% OF THE LEACH LINE(S) SERVED BY EACH PUMP.
 - DISCHARGE PLUMBING MAY BE ONE OF TWO CONFIGURATIONS:
 - THE CONFIGURATION SHOWN WILL DOSE 1/2 OF THE FIELD WITH EACH DISCHARGE.
 - COMBINING THE DISCHARGE PIPES WILL DOSE THE ENTIRE FIELD WITH EACH DISCHARGE.



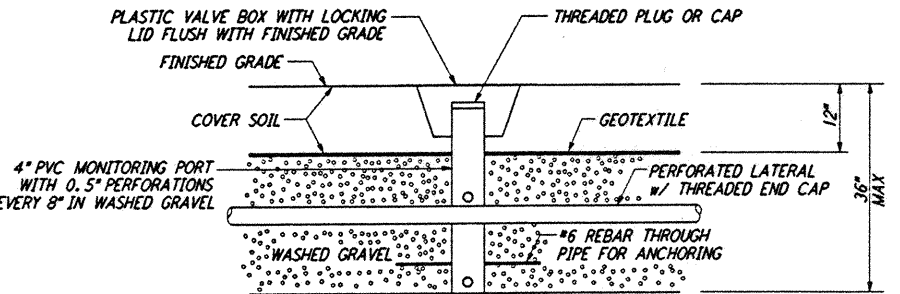
SECTION A-A

SECTION B-B

DOSING LIFT STATION (2) REF WA-C-056 WA-C-510
 NOT TO SCALE

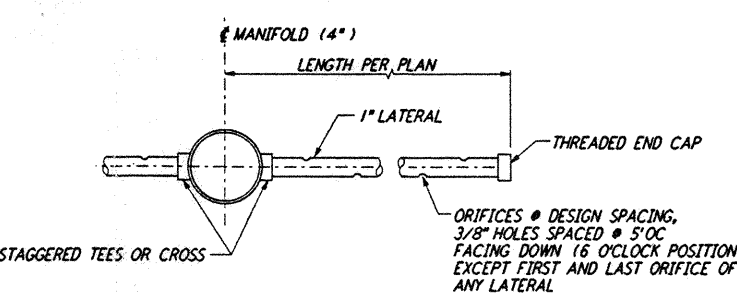


TYPICAL LATERAL SECTION



- NOTES:**
- BANDED GEOTEXTILE IS OPTIONAL ON CONVENTIONAL TRENCH SYSTEMS, BUT IS REQUIRED ON SOIL TYPE 1A SAND-LINED TRENCHES OR BEDS.
 - REQUIRED AT 4 CORNERS OF EACH LEACH FIELD.

MONITORING PORT SECTION (CONVENTIONAL TRENCH DETAIL) (SEE NOTE 5)



TYPICAL LATERAL CROSS CONSTRUCTION W/ ORIFICES @ 6 O'CLOCK

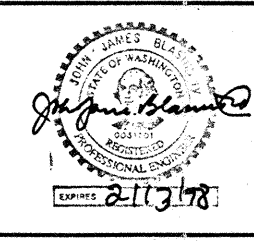
LEACH FIELD (3) REF WA-C-056 WA-C-510
 NOT TO SCALE

not be reproduced, copied, loaned, exhibited, or used in any other way, except by written consent from PARSONS to the borrower.

This document and the design it covers are the property of PARSONS. They are loaned only with the borrower's expressed written agreement that they will

NO.	DATE	BY	CHKD	ENGR	PROJ	DESCRIPTION

FOR CONSTRUCTION	
DRAWN	WRB 9/28/95
CHECKED	
ENGINEER	
PROJ	



PARSONS
 100 WEST WALNUT STREET
 PASADENA, CALIFORNIA

LIGO
 CALIFORNIA INSTITUTE OF TECHNOLOGY
 MASSACHUSETTS INSTITUTE OF TECHNOLOGY

LASER INTERFEROMETER
 GRAVITATIONAL-WAVE OBSERVATORY
 SITE NO. 1 - HANFORD, WASHINGTON

CIVIL UTILITY DETAILS
 SHEET 2

AS NOTED PPI50969 8094
WA-C-056