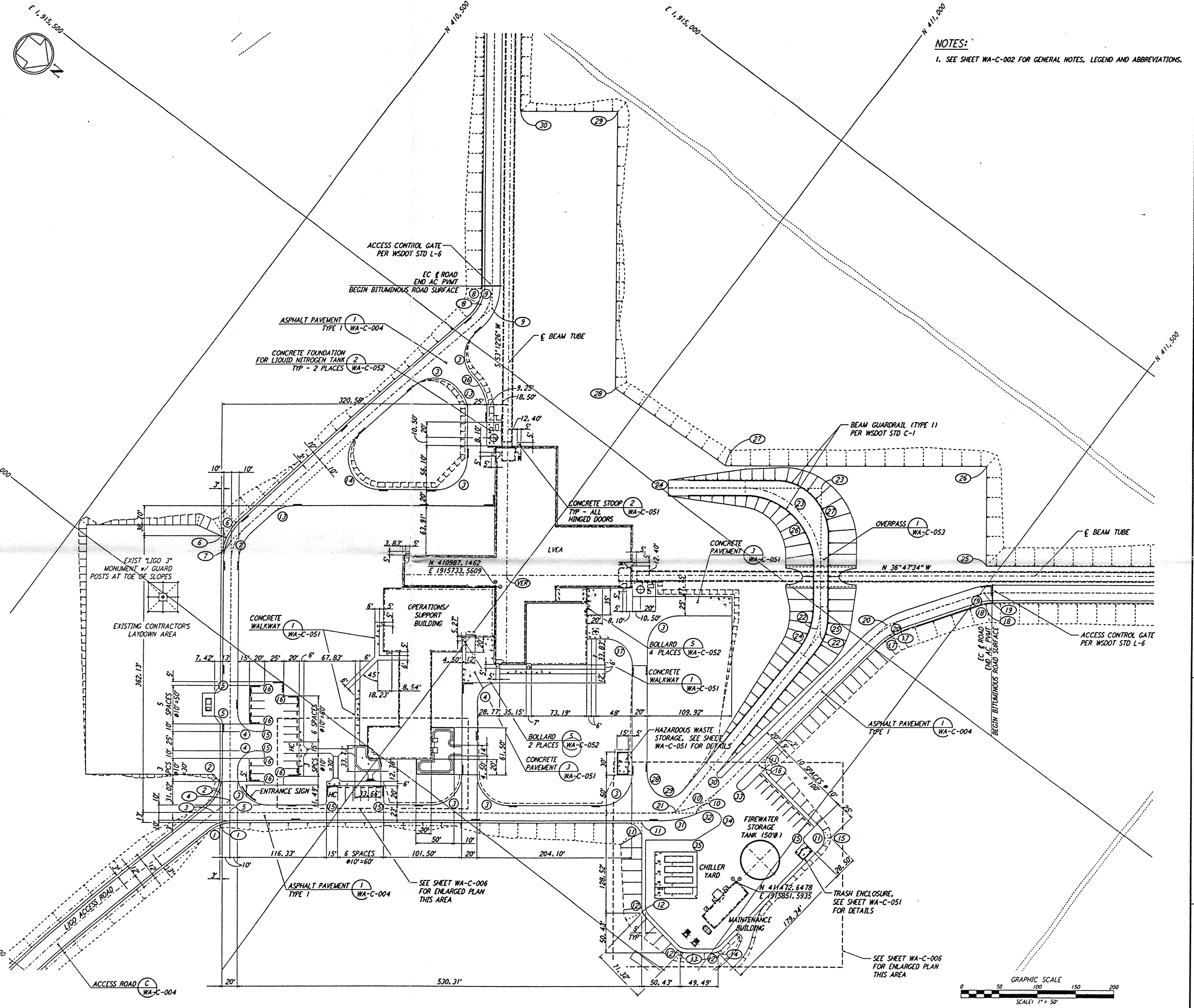


CURVE DATA					
NO.	Δ	RADIUS	LENGTH	TANGENT	REMARK
1	38°30'03"	52'	34.94'	18.16'	EDGE OF PAD (EXIST)
2	51°29'57"	52'	46.74'	25.08'	EDGE OF PAD (EXIST)
3	90°00'00"	40'	62.83'	40.00'	
4	90°00'00"	25'	39.27'	25.00'	
5	90°00'00"	10'	15.71'	10.00'	
6	48°19'28"	75'	63.26'	33.65'	EDGE OF PAD (EXIST)
7	48°19'28"	62'	52.29'	27.81'	EDGE OF ROAD
8	48°19'28"	50'	42.17'	22.73'	EDGE OF PAD (EXIST)
9	48°19'28"	63'	53.14'	28.26'	EDGE OF ROAD
10	45°00'00"	110'	86.39'	45.28'	EDGE OF ROAD
11	90°00'00"	20'	31.42'	20.00'	EDGE OF PAD
12	45°00'00"	20'	15.71'	8.28'	EDGE OF PAD
13	41°40'32"	40'	29.09'	15.22'	
14	138°19'28"	40'	96.57'	105.09'	
15	90°00'00"	5'	7.85'	5.00'	
16	90°00'00"	2'	3.14'	2.00'	
17	26°44'20"	100'	46.67'	23.77'	EDGE OF PAD
18	18°15'59"	50'	15.94'	8.04'	EDGE OF PAD (EXIST)
19	18°15'40"	64.33'	20.51'	10.34'	EDGE OF ROAD
20	26°44'20"	110'	51.33'	26.14'	EDGE OF ROAD
21	180°00'00"	30'	94.25'	-	
22	39°00'00"	100'	68.07'	35.41'	EDGE OF OVERPASS
23	90°00'00"	100'	157.08'	100.00'	EDGE OF OVERPASS
24	39°00'00"	90'	61.26'	31.87'	INSIDE EDGE OVERPASS
25	39°00'00"	70'	47.65'	24.79'	OUTSIDE EDGE OVERPASS
26	90°00'00"	90'	141.37'	90.00'	INSIDE EDGE OVERPASS
27	90°00'00"	70'	109.96'	70.00'	OUTSIDE EDGE OVERPASS
28	35°09'14"	40'	24.54'	12.67'	
29	105°50'48"	25'	46.18'	33.08'	
30	174°00'06"	4'	12.15'	-	
31	24°55'02"	120'	52.19'	26.51'	
32	52°43'01"	25'	23.05'	12.41'	
33	180°00'00"	6'	18.85'	-	
34	119°32'32"	10'	20.86'	17.16'	
35	32°33'30"	20'	11.36'	5.84'	
36	41°40'32"	65'	47.28'	24.74'	
37	90°00'00"	35'	54.98'	35.00'	

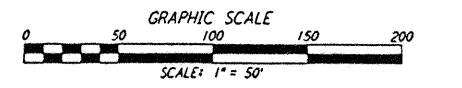
COORDINATES			
NO.	NORTH	EAST	REMARK
1	410990.1636	1915712.5766	VERTEX (E BEAM TUBE)
2	410884.9628	1916195.0154	PI EDGE OF PAD (EXIST)
3	410861.9569	1916164.4961	PI EDGE OF PAD (EXIST)
4	410870.9685	1916189.2481	EDGE OF ROAD INTERSECTION
5	410877.6535	1916163.7780	EDGE OF ROAD INTERSECTION
6	410887.4715	1916176.9055	EDGE OF ROAD INTERSECTION
7	410660.2510	1915894.8000	PI EDGE OF PAD (EXIST)
8	410674.1544	1915891.6843	PI EDGE OF ROAD
9	410750.4475	1915452.7184	PI EDGE OF PAD (EXIST)
10	410764.7074	1915447.8560	PI EDGE OF ROAD
11	411376.9911	1915810.7953	PI EDGE OF PAD
12	411397.1283	1915956.2176	PI EDGE OF PAD
13	411467.7144	1915966.3985	PI EDGE OF PAD
14	411507.3455	1915936.7584	PI EDGE OF PAD
15	411537.0138	1915731.0468	PI EDGE OF PAD
16	411404.3866	1915711.9182	PI EDGE OF PAD
17	411438.7429	1915473.7112	PI EDGE OF PAD
18	411513.7640	1915366.3479	PI EDGE OF PAD (EXIST)
19	411503.3335	1915356.2497	PI EDGE OF ROAD
20	411426.7403	1915465.8629	PI EDGE OF ROAD
21	411354.4782	1915825.6459	EDGE OF ROAD INTERSECTION
22	411366.0265	1915526.0024	PI EDGE OF ROAD
23	411252.5814	1915374.3189	PI EDGE OF ROAD
24	411092.4208	1915494.1049	PI EDGE OF ROAD
25	411483.8178	1915326.3078	PI EDGE OF PAD (EXIST)
26	411407.1550	1915223.8040	PI EDGE OF PAD (EXIST)
27	411134.8810	1915427.4380	PI EDGE OF PAD (EXIST)
28	410958.8720	1915434.2010	PI EDGE OF PAD (EXIST)
29	410743.2600	1915145.9110	PI EDGE OF PAD (EXIST)
30	410640.7560	1915222.5730	PI EDGE OF PAD (EXIST)

not be reproduced, copied, loaned, exhibited, or used in any other way, except by written consent from PARSONS to the borrower.

This document and the design it covers are the property of PARSONS. They are loaned only with the borrower's expressed written agreement that they will not be reproduced, copied, loaned, exhibited, or used in any other way, except by written consent from PARSONS to the borrower.



NOTES:
1. SEE SHEET WA-C-002 FOR GENERAL NOTES, LEGEND AND ABBREVIATIONS.



NO.	DATE	BY	CHKD	ENGR	PROJ	DESCRIPTION
A	4/19/96	WRB	NA	NA	NA	FINAL DESIGN REVIEW & BID

DRAWN	WRB
CHECKED	
ENGINEER	
PROJ	

PARSONS
100 WEST WALNUT STREET
PASADENA, CALIFORNIA

LIGO
CALIFORNIA INSTITUTE OF TECHNOLOGY
MASSACHUSETTS INSTITUTE OF TECHNOLOGY

LASER INTERFEROMETER
GRAVITATIONAL-WAVE OBSERVATORY
SITE NO. 1 - HANFORD, WASHINGTON

CIVIL
CORNER STATION
PLOT PLAN

SCALE: 1" = 50'
CONTRACT NUMBER: PP150969
PROJECT NUMBER: 8094
SHEET NUMBER: **WA-C-505**

LIGO-D960241-A-0