

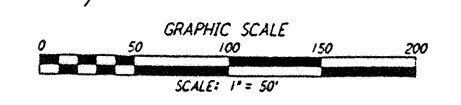
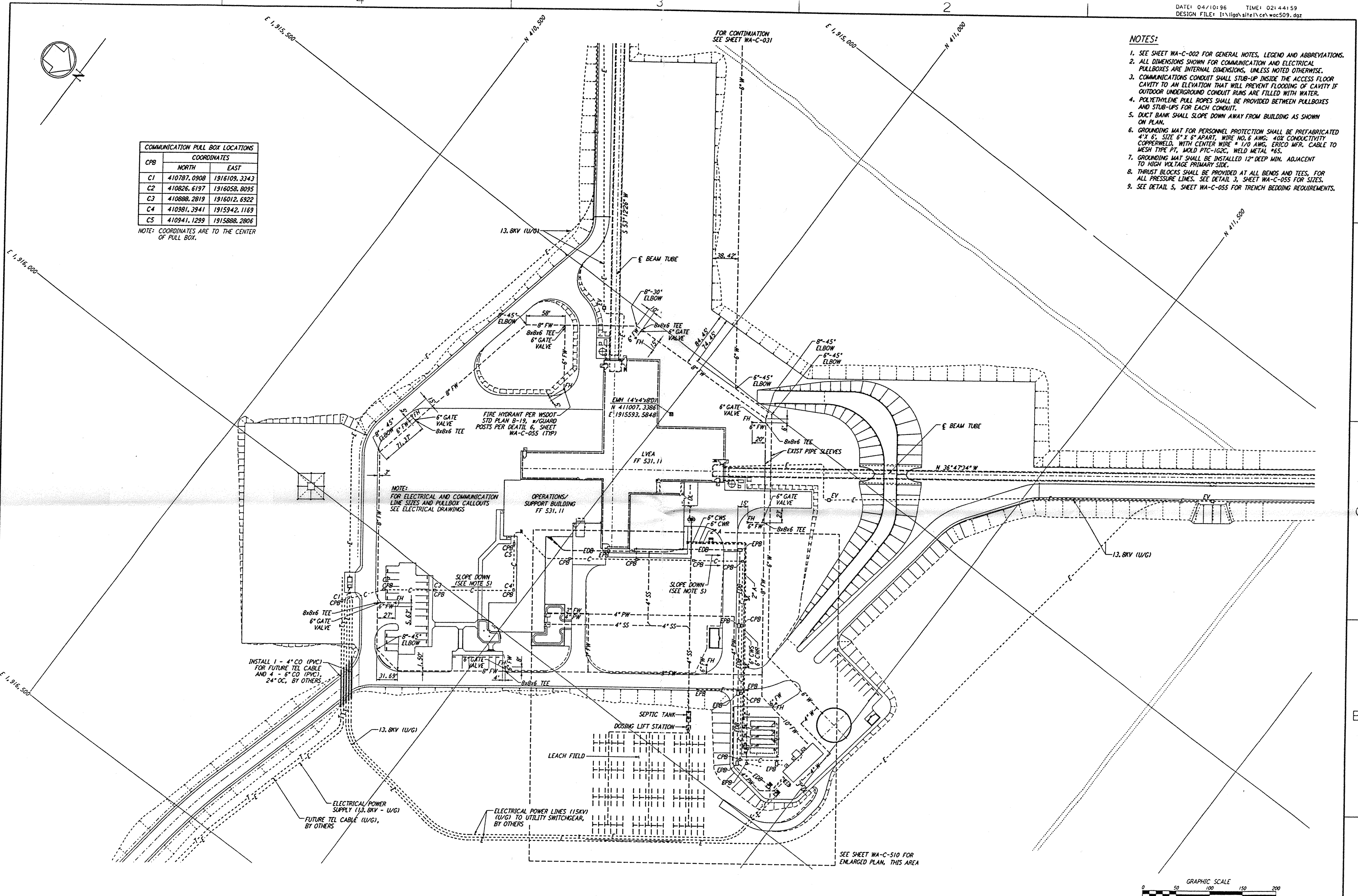
COMMUNICATION PULL BOX LOCATIONS		
CPB	COORDINATES	
	NORTH	EAST
C1	410787.0908	1916109.3343
C2	410826.6197	1916058.8095
C3	410888.2819	1916012.6922
C4	410981.3941	1915942.1169
C5	410941.1299	1915888.2806

NOTE: COORDINATES ARE TO THE CENTER OF PULL BOX.

- NOTES:**
- SEE SHEET WA-C-002 FOR GENERAL NOTES, LEGEND AND ABBREVIATIONS.
 - ALL DIMENSIONS SHOWN FOR COMMUNICATION AND ELECTRICAL PULLBOXES ARE INTERNAL DIMENSIONS, UNLESS NOTED OTHERWISE.
 - COMMUNICATIONS CONDUIT SHALL STUB-UP INSIDE THE ACCESS FLOOR CAVITY TO AN ELEVATION THAT WILL PREVENT FLOODING OF CAVITY IF OUTDOOR UNDERGROUND CONDUIT RUNS ARE FILLED WITH WATER.
 - POLYETHYLENE PULL ROPES SHALL BE PROVIDED BETWEEN PULLBOXES AND STUB-UPS FOR EACH CONDUIT.
 - DUCT BANK SHALL SLOPE DOWN AWAY FROM BUILDING AS SHOWN ON PLAN.
 - GROUNDING MAT FOR PERSONNEL PROTECTION SHALL BE PREFABRICATED 4' X 6', SIZE 6" X 6" APART, WIRE NO. 6 AWG, 40X CONDUCTIVITY COPPERWELD, WITH CENTER WIRE # 1/0 AWG, ERICO MFR. CABLE TO MESH TYPE FT, WELD PTC-100C, WELD METAL RES.
 - GROUNDING MAT SHALL BE INSTALLED 12" DEEP MIN. ADJACENT TO HIGH VOLTAGE PRIMARY SIDE.
 - THRUST BLOCKS SHALL BE PROVIDED AT ALL BENDS AND TEES, FOR ALL PRESSURE LINES. SEE DETAIL 3, SHEET WA-C-055 FOR SIZES.
 - SEE DETAIL 5, SHEET WA-C-055 FOR TRENCH BEDDING REQUIREMENTS.

This document and the design it covers are the property of PARSONS. They are loaned only with the borrower's expressed written agreement that they will not be reproduced, copied, loaned, exhibited, or used in any other way, except by written consent from PARSONS to the borrower.

This document and the design it covers are the property of PARSONS. They are loaned only with the borrower's expressed written agreement that they will not be reproduced, copied, loaned, exhibited, or used in any other way, except by written consent from PARSONS to the borrower.



NO.	DATE	BY	CHKD	ENGR	PROJ	DESCRIPTION
A	4/19/96	WRB	NA	CH	CH	FINAL DESIGN REVIEW & BID

DRAWN	WRB
CHECKED	
ENGINEER	
PROJ	

PARSONS
 100 WEST WALNUT STREET
 PASADENA, CALIFORNIA

LIGO
 CALIFORNIA INSTITUTE OF TECHNOLOGY,
 MASSACHUSETTS INSTITUTE OF TECHNOLOGY

LASER INTERFEROMETER
 GRAVITATIONAL-WAVE OBSERVATORY
 SITE NO. 1 - HANFORD, WASHINGTON

CIVIL
 CORNER STATION
 UTILITY PLAN

SCALE: 1" = 50'

PROJECT NUMBER: PPI50969
 SHEET NUMBER: 8094

WA-C-509