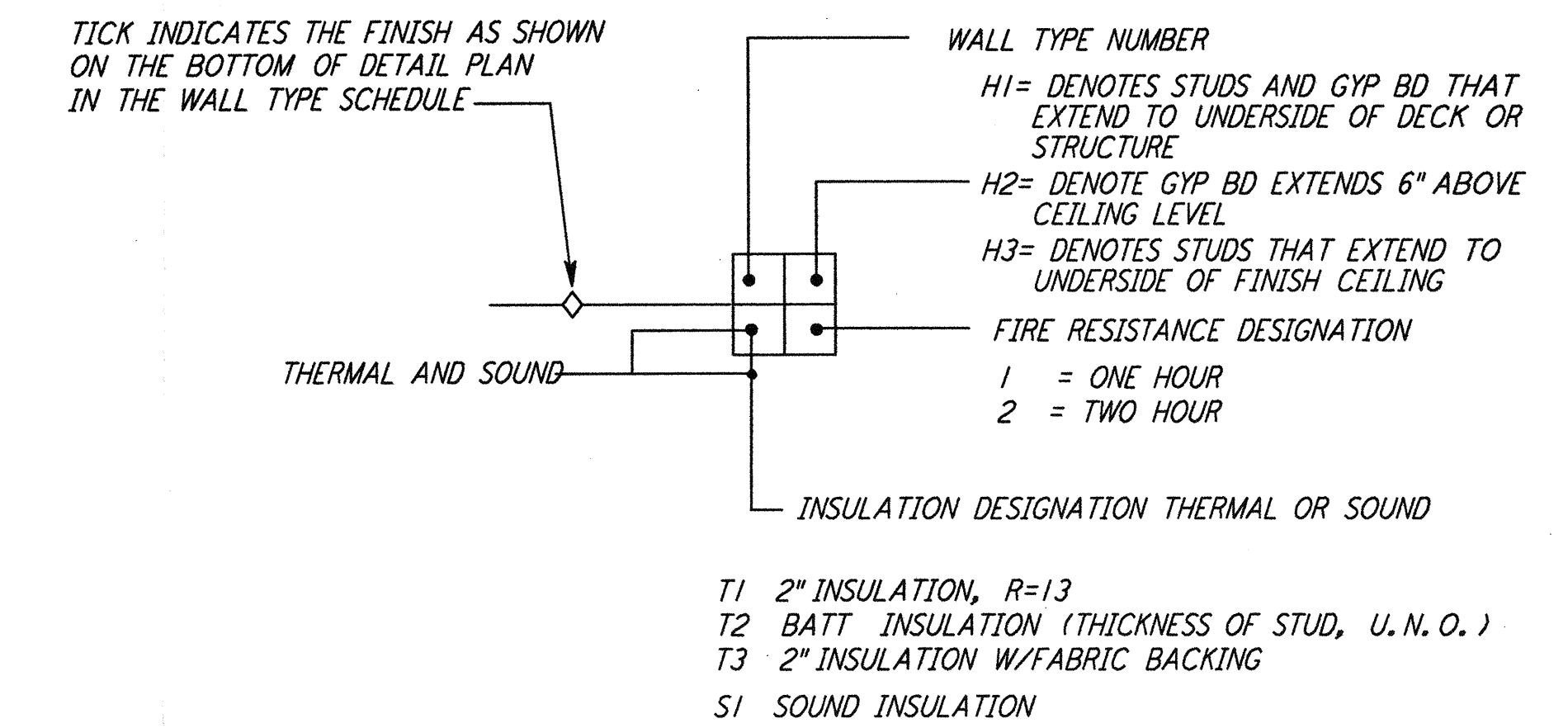


WALL TYPE SCHEDULE

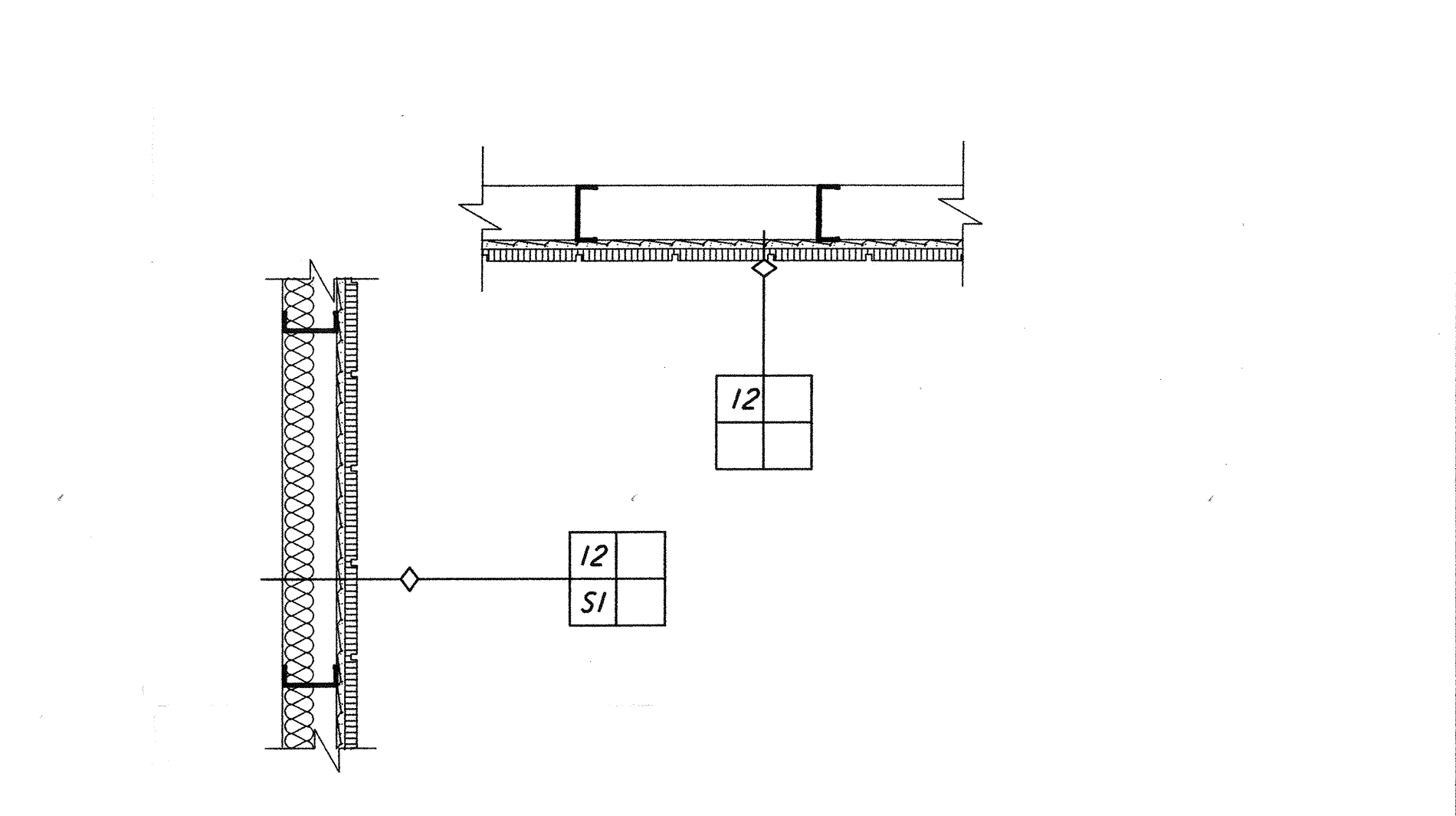
WALL TYPES LEGEND

WALL KEY	DETAIL PLAN	DESCRIPTION	WALL KEY	DETAIL PLAN	DESCRIPTION	WALL KEY	DETAIL PLAN	DESCRIPTION
18		EXTERIOR INSULATED METAL WALL PANELS (VERTICAL)	11		6" METAL STUDS 5/8" GYPSUM BOARD	4		4" METAL STUD 5/8" GYPSUM BOARD
19		7/8" SMOOTH PLASTER OVER METAL LATH 1/2" PLYWOOD 8" METAL STUDS 1/2" PLYWOOD 7/8" SMOOTH PLASTER OVER METAL LATH	12		6" METAL STUDS 1/4" CERAMIC TILE 1" GROUT/BACKER BOARD	5		1 WIRE WHERE INSULATION OCCURS) 4" METAL STUDS 1" GROUT/BACKER BOARD 1/4" CERAMIC TILE
20			13		5/8" GYPSUM BOARD 6" METAL STUDS 1" GROUT/BACKER BOARD 1/4" CERAMIC TILE	6		5/8" GYPSUM BOARD 4" METAL STUD 5/8" GYPSUM BOARD
21			14		1/4" CERAMIC TILE 1" GROUT/BACKER BOARD 6" METAL STUDS 1" GROUT/BACKER BOARD 1/4" CERAMIC TILE	7		5/8" GYPSUM BOARD 4" METAL STUD 1" GROUT/BACKER BOARD 1/4" CERAMIC TILE
22			15		6" METAL STUDS 5/8" GYPSUM BOARD 5/8" GYPSUM BOARD	8		4" METAL STUD 5/8" GYPSUM BOARD 5/8" GYPSUM BOARD
23			16		5/8" GYPSUM BOARD 6" METAL STUDS 5/8" GYPSUM BOARD	9		5/8" GYPSUM BOARD 5/8" GYPSUM BOARD 4" METAL STUD 5/8" GYPSUM BOARD 5/8" GYPSUM BOARD
24			17		5/8" GYPSUM BOARD 5/8" GYPSUM BOARD 6" METAL STUDS 5/8" GYPSUM BOARD 5/8" GYPSUM BOARD	10		1 WIRE WHERE INSULATION OCCURS) 5/8" GYPSUM BOARD 5/8" GYPSUM BOARD 4" METAL STUD 5/8" GYPSUM BOARD 1" GROUT/BACKER BOARD 1/4" CERAMIC TILE



NOTE :
 INDICATED INSULATION VALUES FOR THERMAL AND SOUND ARE THE MINIMUM REQUIRED VALUES

EXAMPLE



WALL KEY	DETAIL PLAN	DESCRIPTION
1		2 1/2" METAL STUD 5/8" GYPSUM BOARD
2		5/8" GYPSUM BOARD 2 1/2" METAL STUD 5/8" GYPSUM BOARD
3		1 WIRE WHERE INSULATION OCCURS) 2 1/2" METAL STUDS 1" GROUT/BACKER BOARD 1/4" CERAMIC TILE

This document and the design it covers are the property of PARSONS. They are loaned only with the borrower's expressed written agreement that they will not be reproduced, copied, loaned, exhibited, or used in any other way, except by written consent from PARSONS to the borrower.

NO.	DATE	BY	CHKD	ENGR	PROJ	DESCRIPTION
2	5-15-98	CKT	AK	MDW		ISSUED FOR AS-BUILT
1	2-28-97	CKT	TB	AK	TDM	OSB REVISION

ISSUED FOR CONSTRUCTION
 DRAWN CKT 5-12-96
 CHECKED TB 5-26-96
 ENGINEER bkk 7-12-96
 PROJ MDW 7-12-96

AS-BUILT DRAWINGS

100 WEST WALNUT STREET
 PASADENA, CALIFORNIA

CALIFORNIA INSTITUTE OF TECHNOLOGY
 MASSACHUSETTS INSTITUTE OF TECHNOLOGY

LASER INTERFEROMETER
 GRAVITATIONAL-WAVE OBSERVATORY
 SITE NO. 1 - HANFORD, WASHINGTON

ARCHITECTURAL WALL TYPE SCHEDULES

AS NOTED PPI50969 8094

WA-A-428

Thu Jun 04 21:56:44 1998 C:\PLOT\JOB\ES3\3682\JOB\ES2085\4\N\3682\waf428.plt