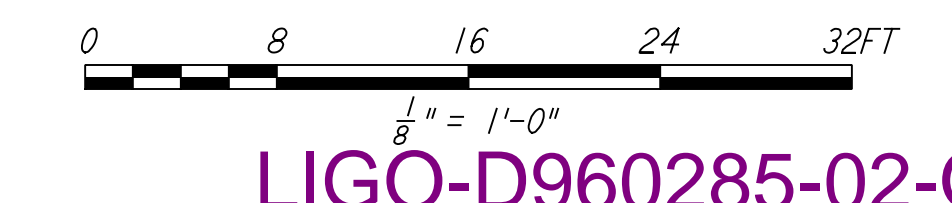
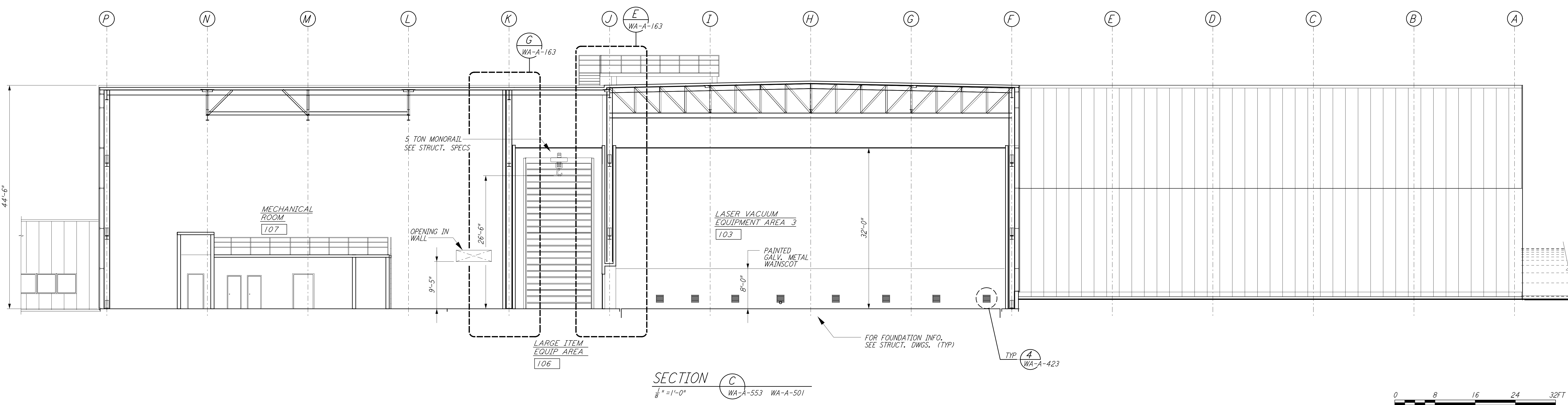
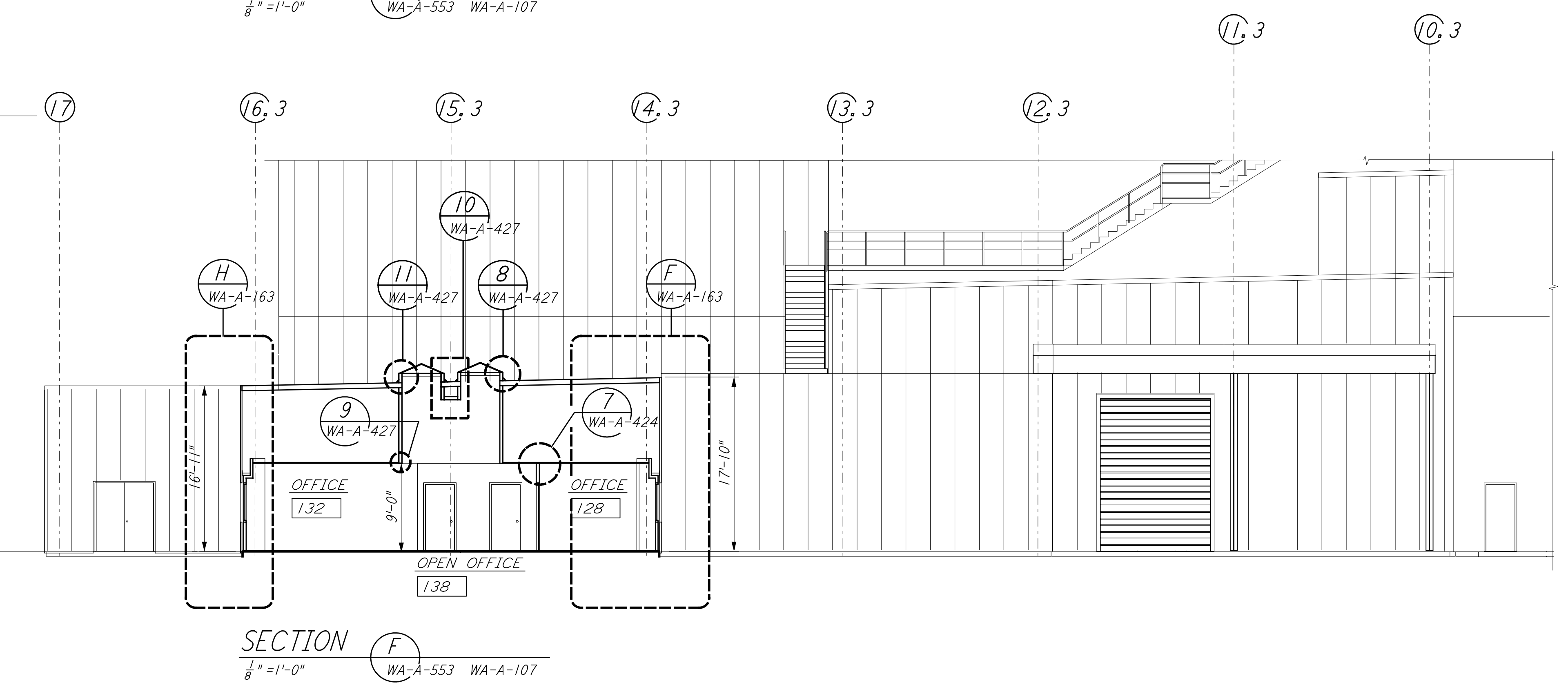
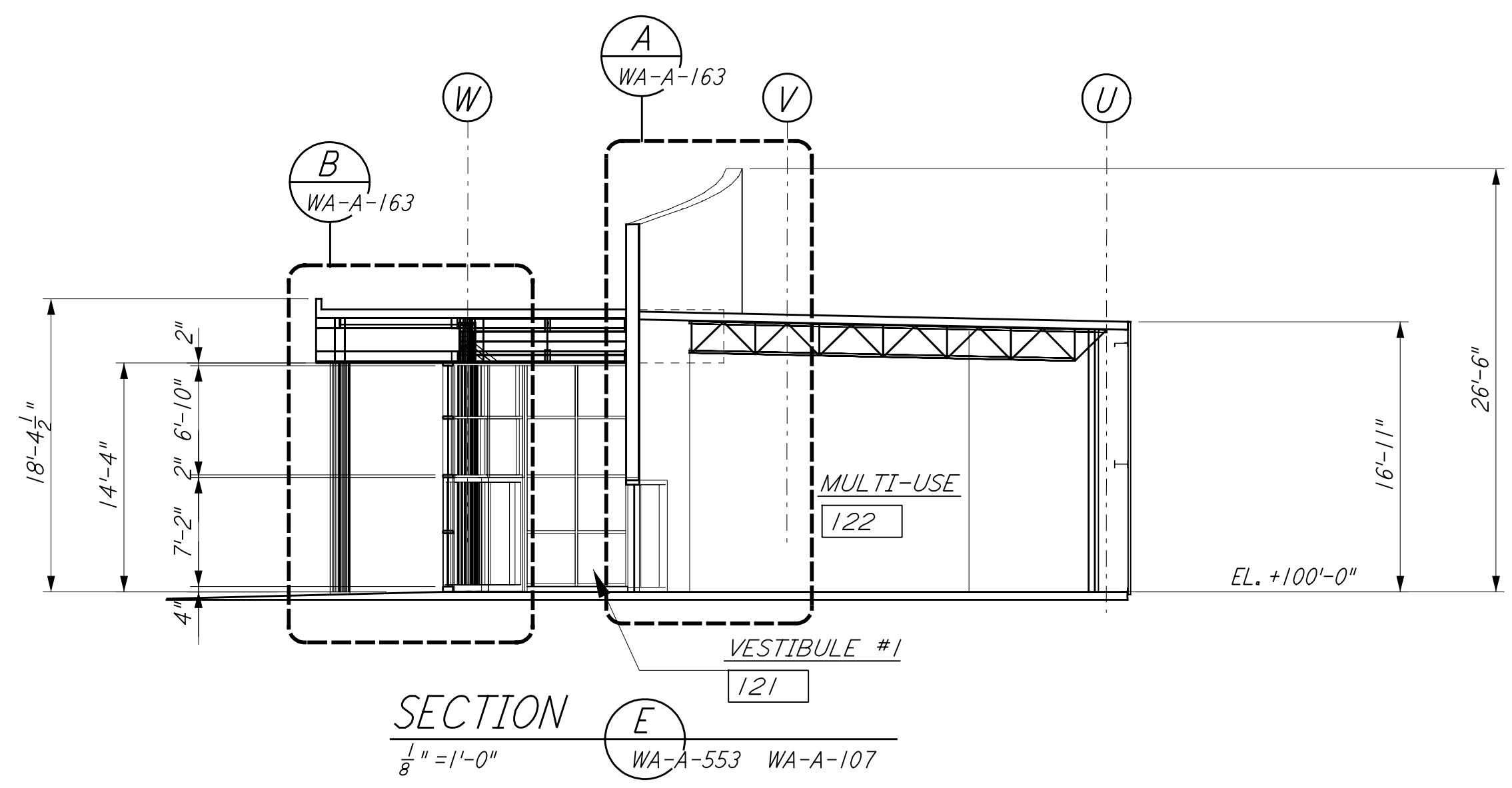
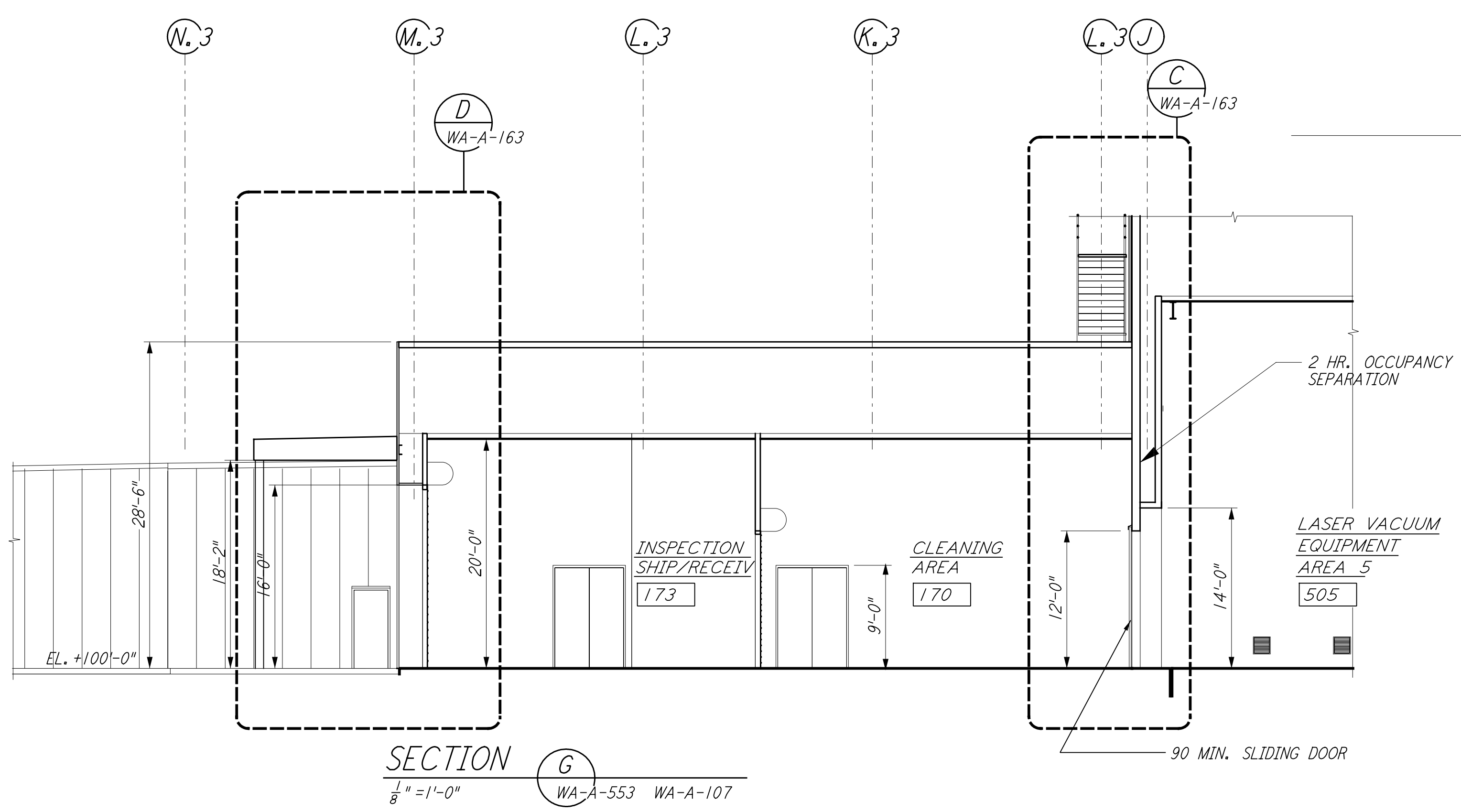


This document and the design it covers are the property of PARSONS. They are loaned only with the borrower's expressed written agreement that they will not be reproduced, copied, loaned, exhibited, or used in any other way, except by written consent from PARSONS to the borrower.

This document and the design it covers are the property of PARSONS. They are loaned only with the borrower's expressed written agreement that they will not be reproduced, copied, loaned, exhibited, or used in any other way, except by written consent from PARSONS to the borrower.



DATUM POINT EL +100, 00 = 531.11' (LVEA)
 DATUM POINT EL +100, 00 = 531.11' (OSB)

NO.	DATE	BY	CHKD	ENGR	PROJ	DESCRIPTION
1	2-28-97	CKT	TB	AK	TDM	ISSUED FOR AS-BUILT OSB REVISION
2	5-15-98	CKT				ISSUED FOR CONSTRUCTION

NO.	DATE	BY	CHKD	ENGR	PROJ	DESCRIPTION
1	2-28-97	CKT	TB	AK	TDM	ISSUED FOR AS-BUILT OSB REVISION
2	5-15-98	CKT				ISSUED FOR CONSTRUCTION

NO.	DATE	BY	CHKD	ENGR	PROJ	DESCRIPTION
1	2-28-97	CKT	TB	AK	TDM	ISSUED FOR AS-BUILT OSB REVISION
2	5-15-98	CKT				ISSUED FOR CONSTRUCTION

PARSONS
 100 WEST WALNUT STREET
 PASADENA, CALIFORNIA

LIGO
 CALIFORNIA INSTITUTE OF TECHNOLOGY
 MASSACHUSETTS INSTITUTE OF TECHNOLOGY

LIGO-D960285-02-0
 LASER INTERFEROMETER
 GRAVITATIONAL-WAVE OBSERVATORY
 SITE NO. 1 - HANFORD, WASHINGTON

ARCHITECTURAL
 CORNER SECTIONS
 LVEA & OSB SECTIONS
 SHEET 3

AS NOTED PPI50969 8094
WA-A-553