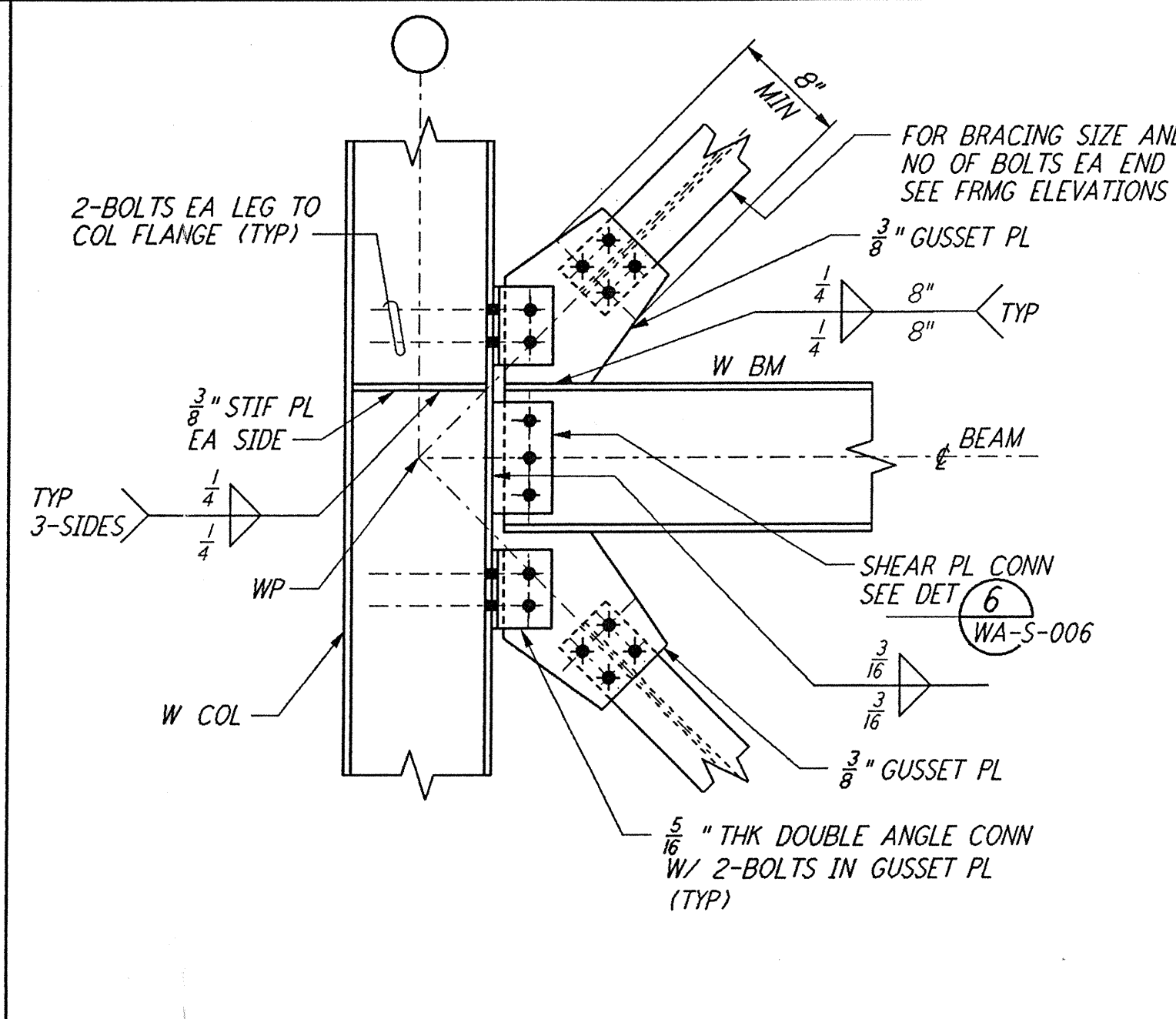
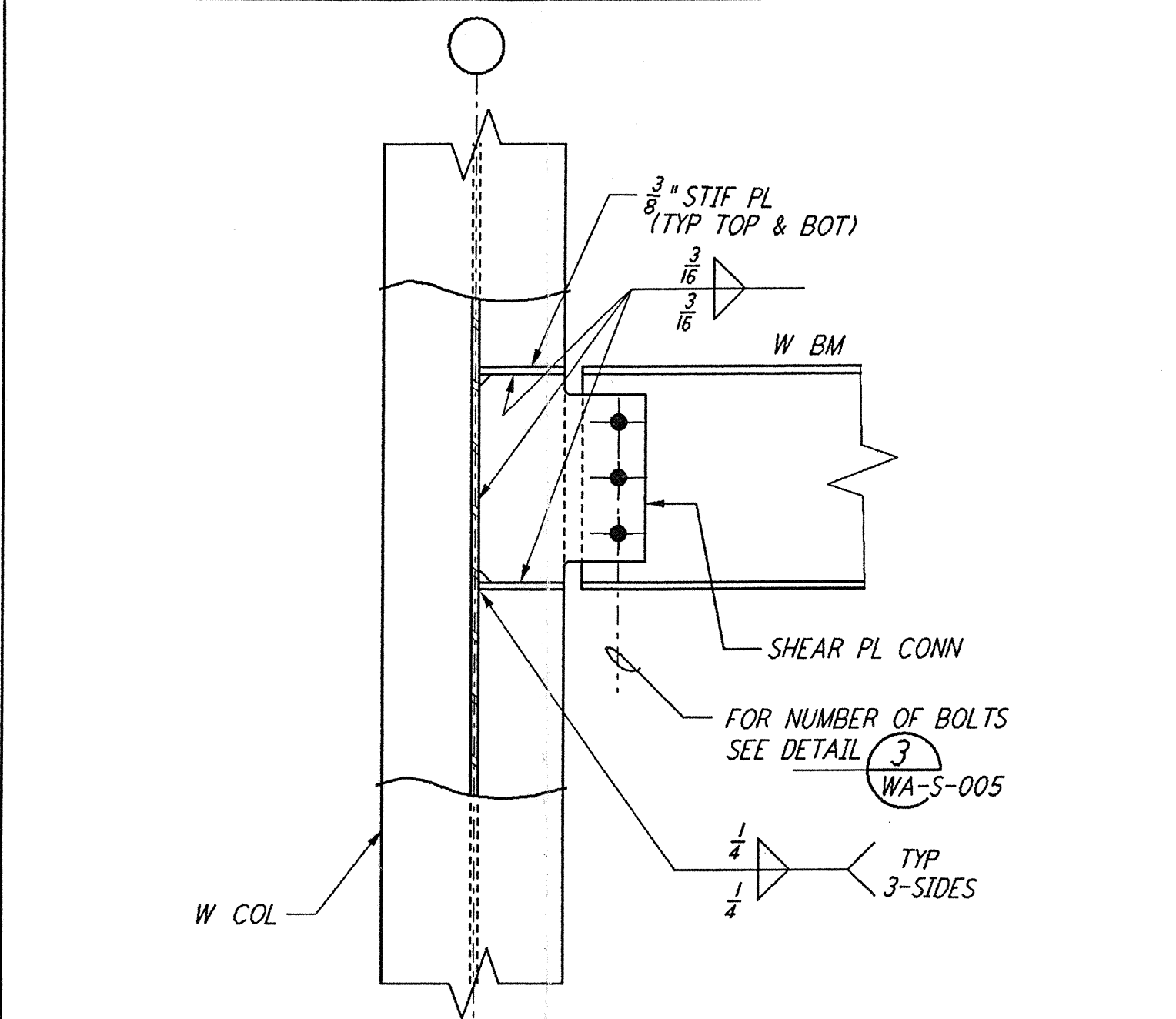


TYP VERTICAL BRACING TO COLUMN WEB CONNECTION DETAIL 1

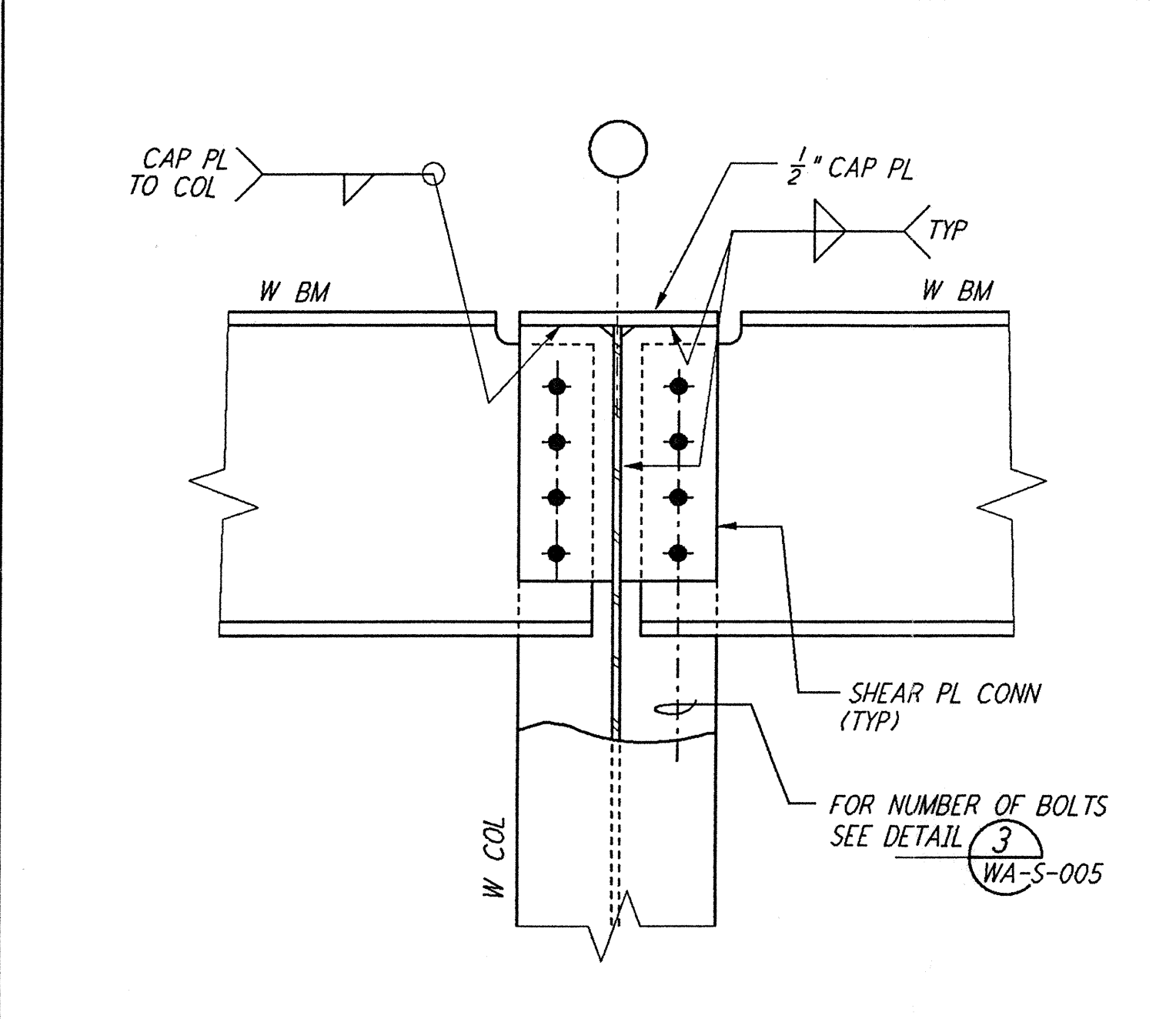
NO OF BOLTS EA END OF VERTICAL BRACING	"L" BOLTS	"N" BOLTS
6	0'-10"	3
4	0'-8"	2



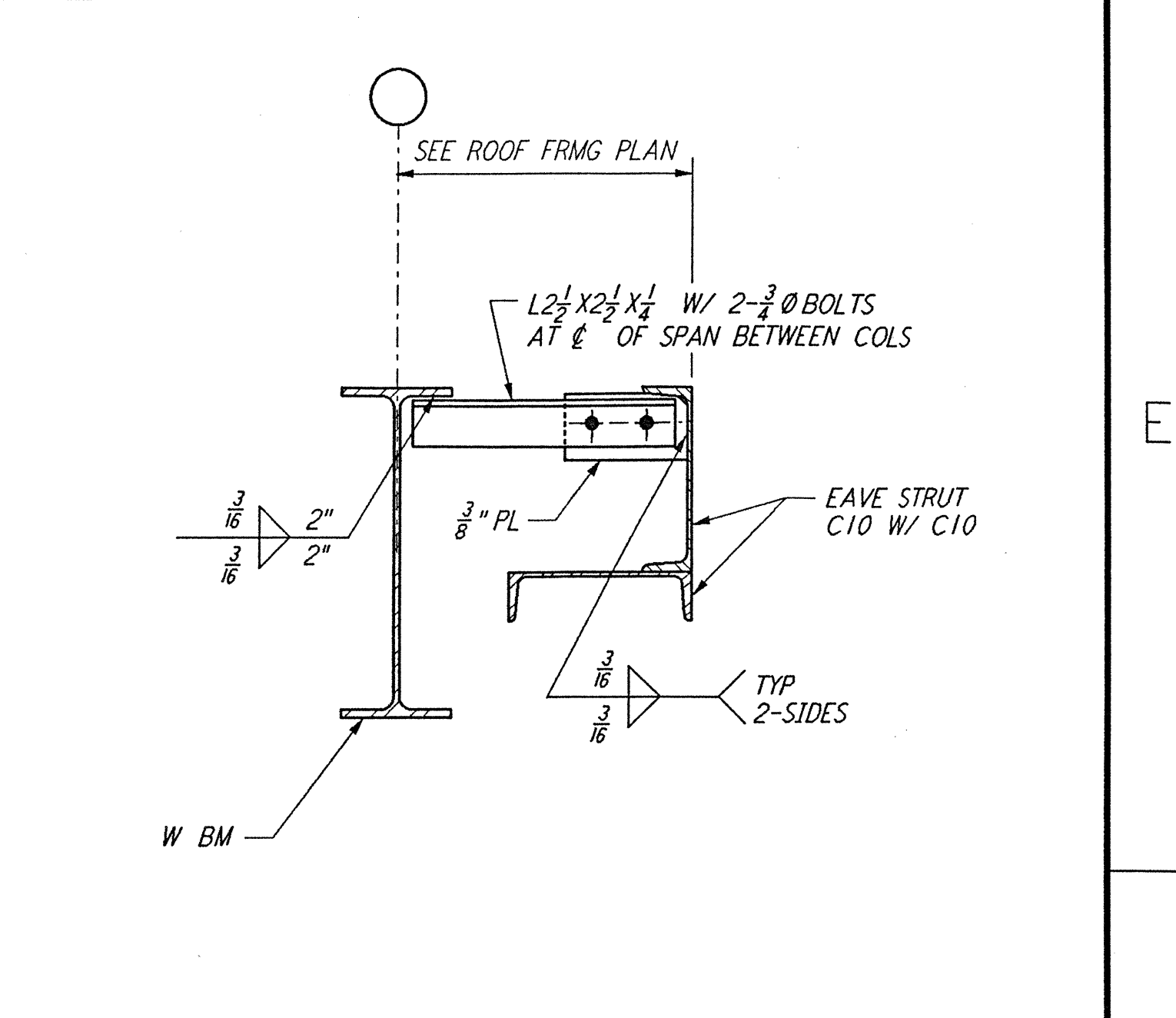
TYP VERTICAL BRACING TO COLUMN FLANGE CONNECTION DETAIL 2



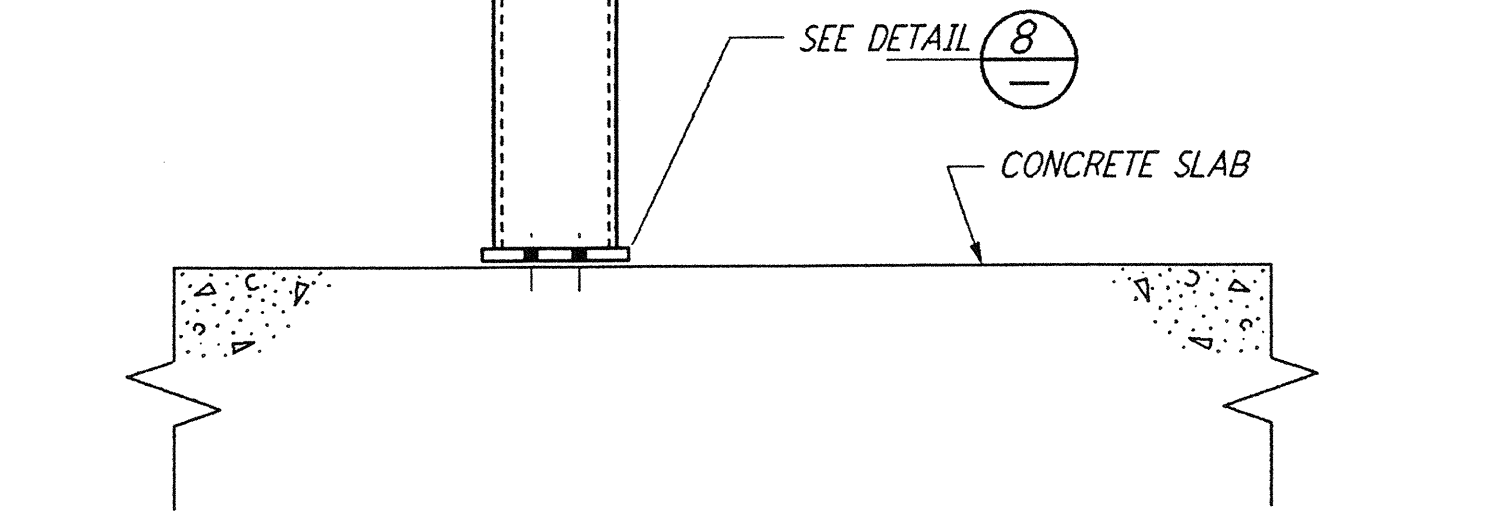
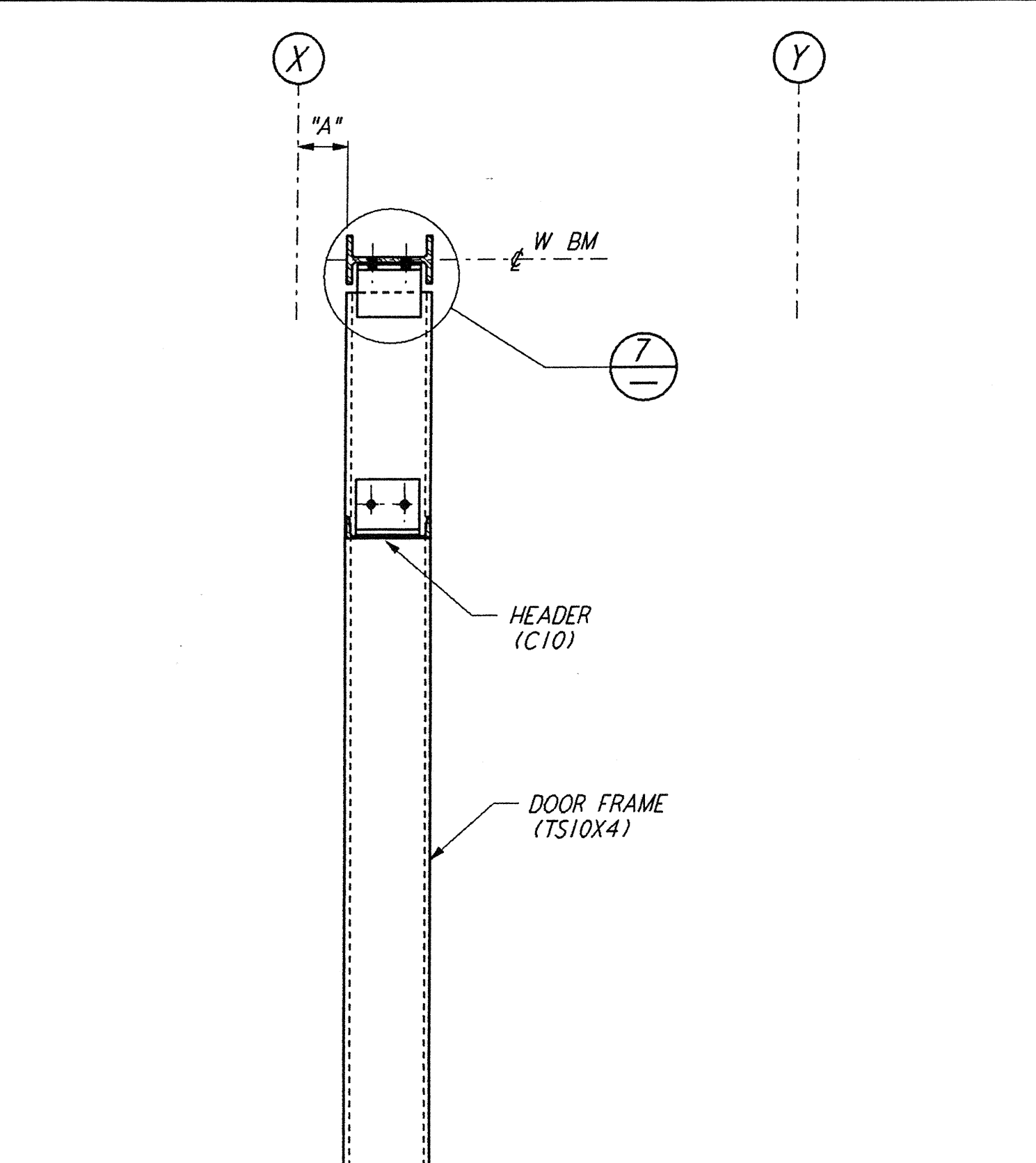
BEAM TO COL WEB CONNECTION DETAIL 3



BEAM TO COL CONNECTION DETAIL 4

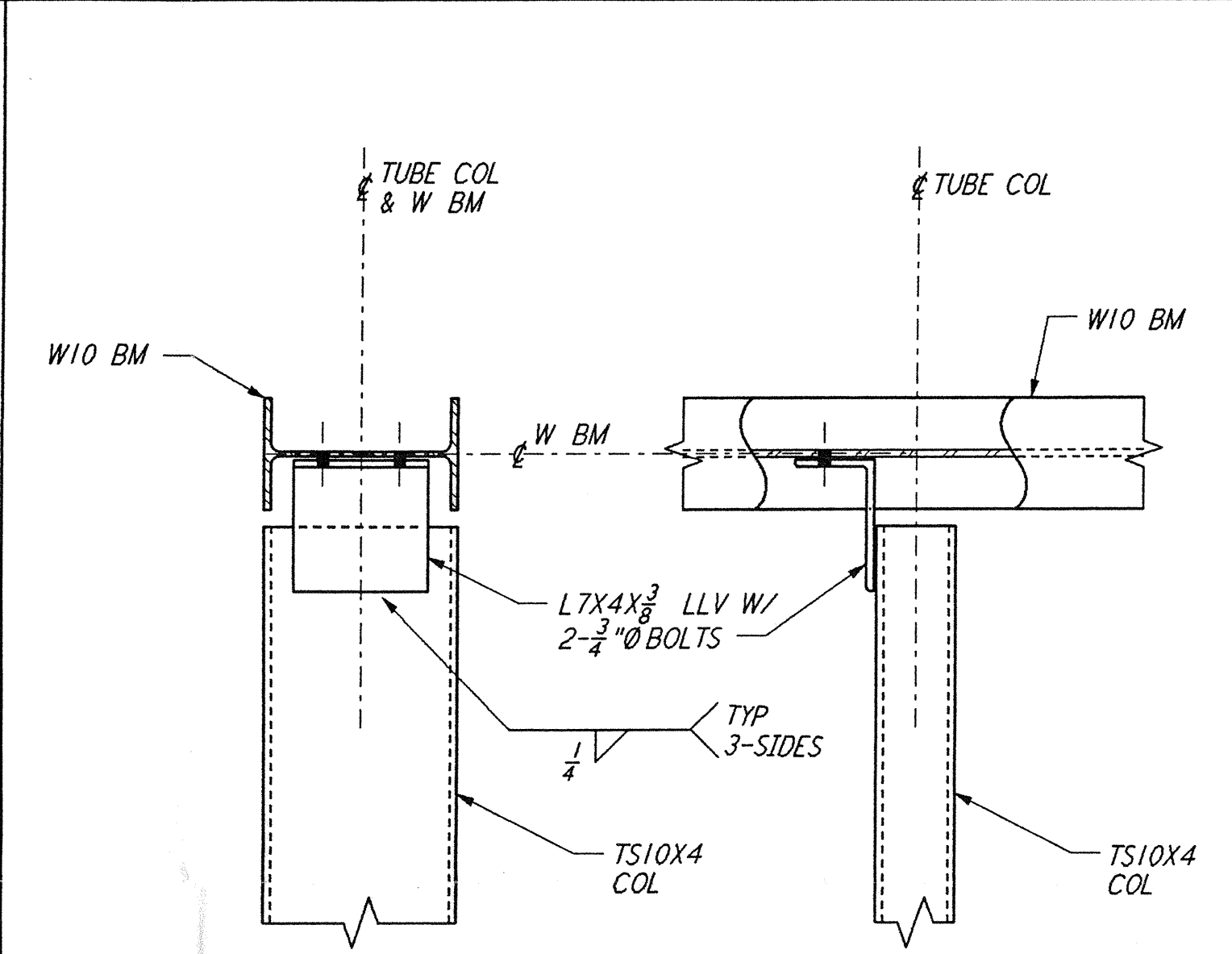


EAVE STRUT BRACING CONNECTION DETAIL 5

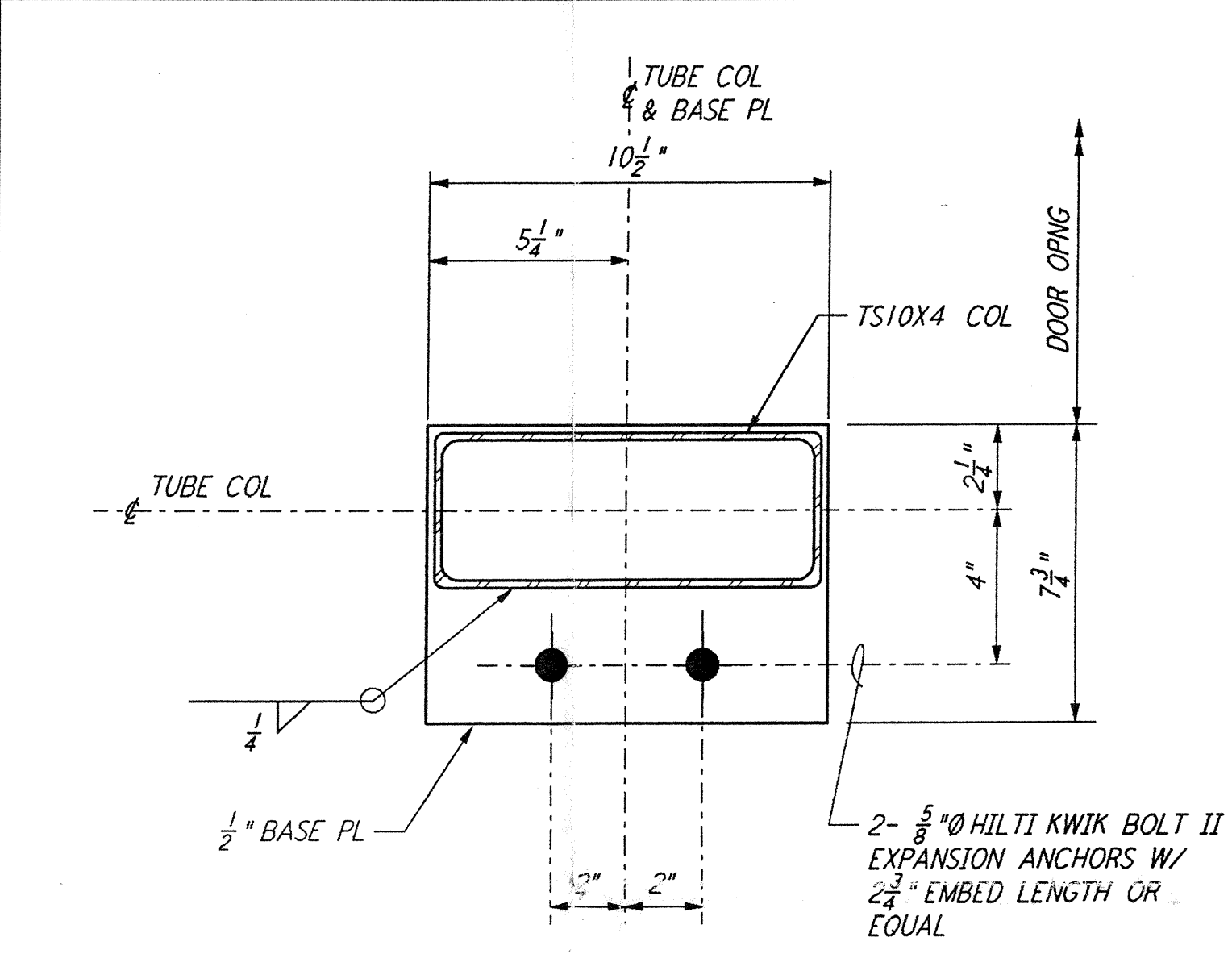


BUILDING ID	DOOR ID	DIMENSION "A"	FROM GRID (X)	TOWARD GRID (Y)
LVEA	101B	7 3/4"	6	7
OSB	170A	9'-9 1/2"	K.3	L.3
OSB	171B	6 1/2"	11.3	12.3
OSB	172B	6 1/2"	11.3	12.3
OSB	173B	3 1/2"	M.3	L.3
MID & END STATION	205A	4 3/4"	C	D
MID & END STATION	205B	8 3/8"	B	A
LVEA	101B	OMIT		8

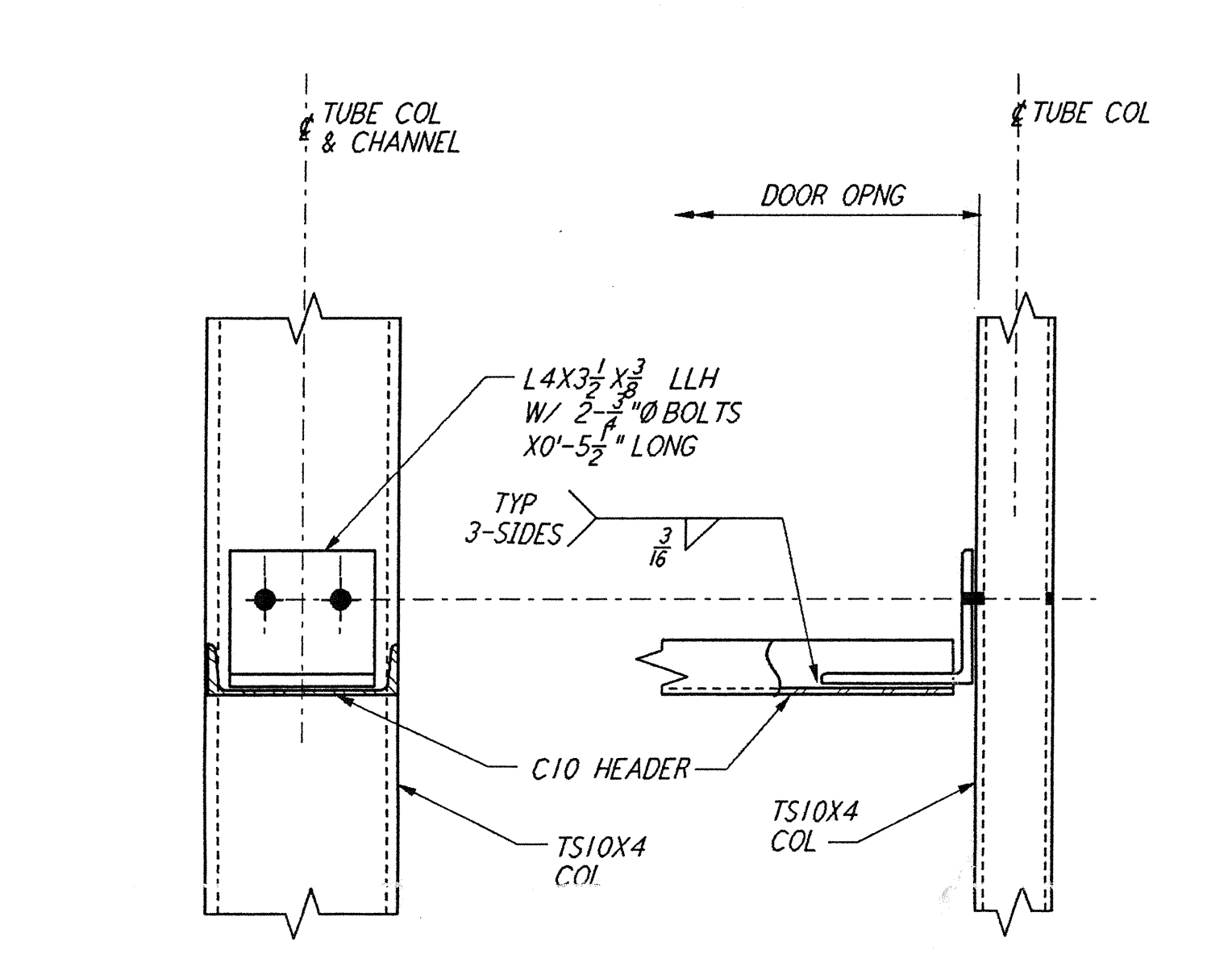
INTERIOR ROLLED-UP DOOR FRAMING DETAIL 6



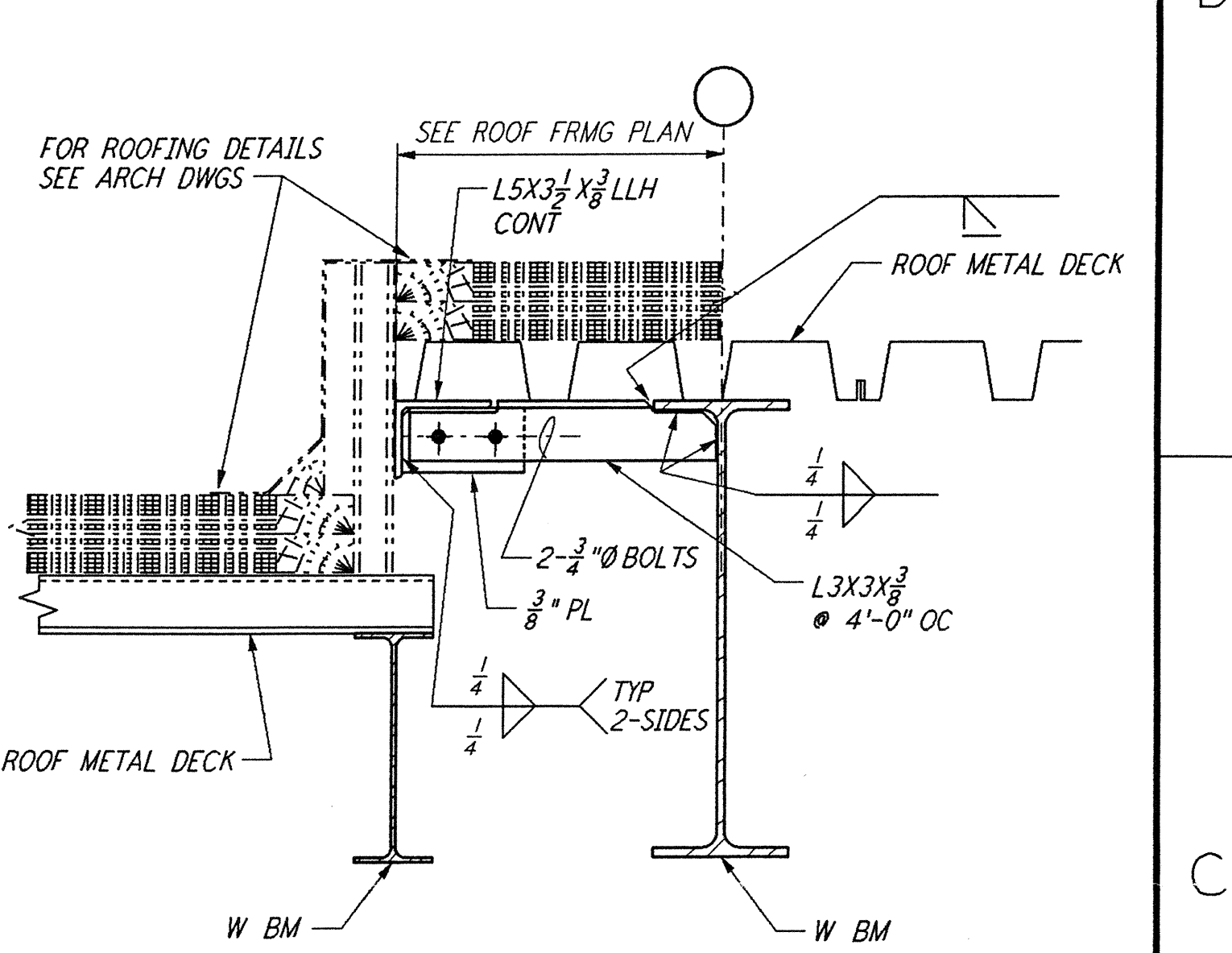
DETAIL 7



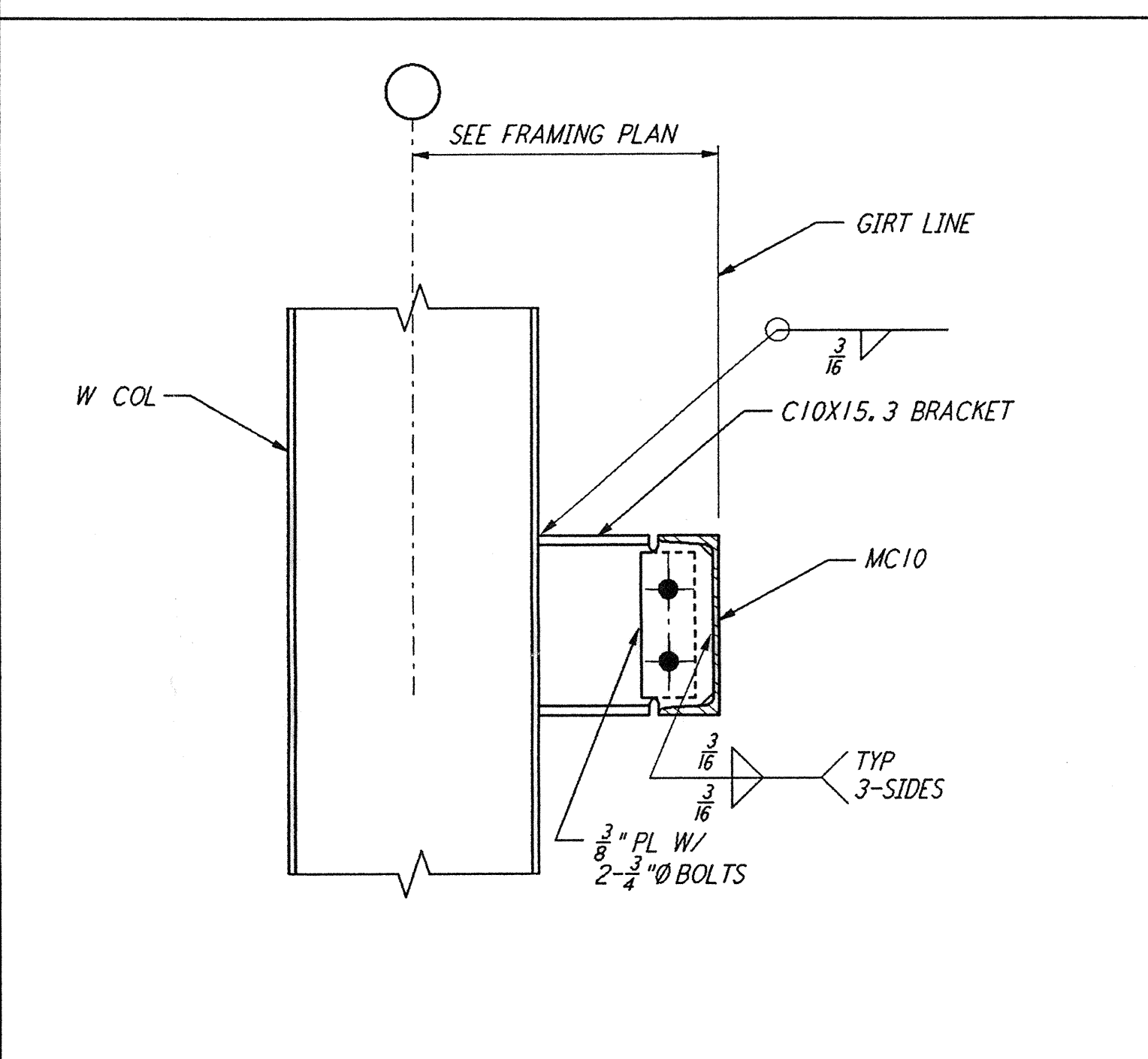
DETAIL 8



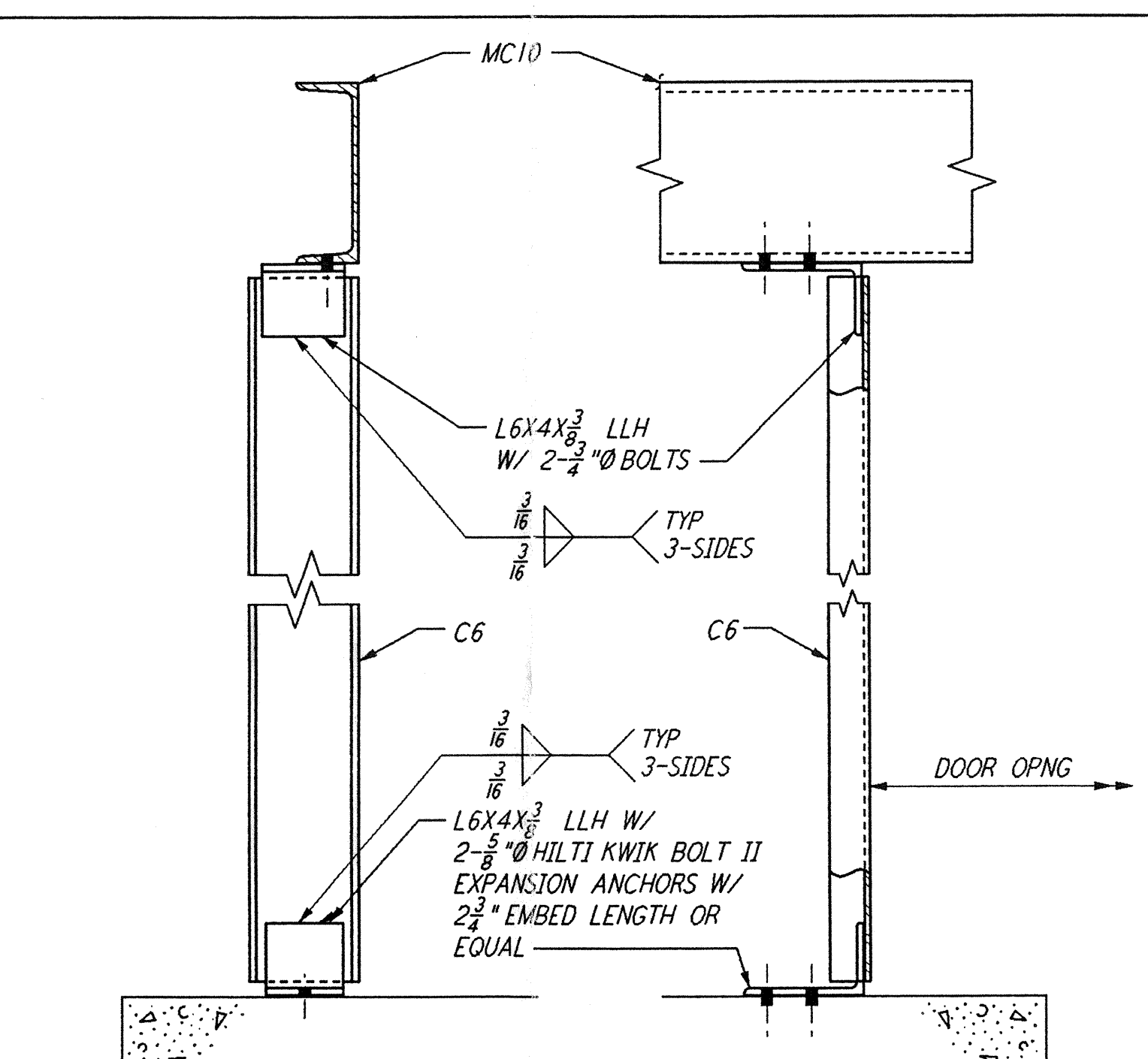
DETAIL 9



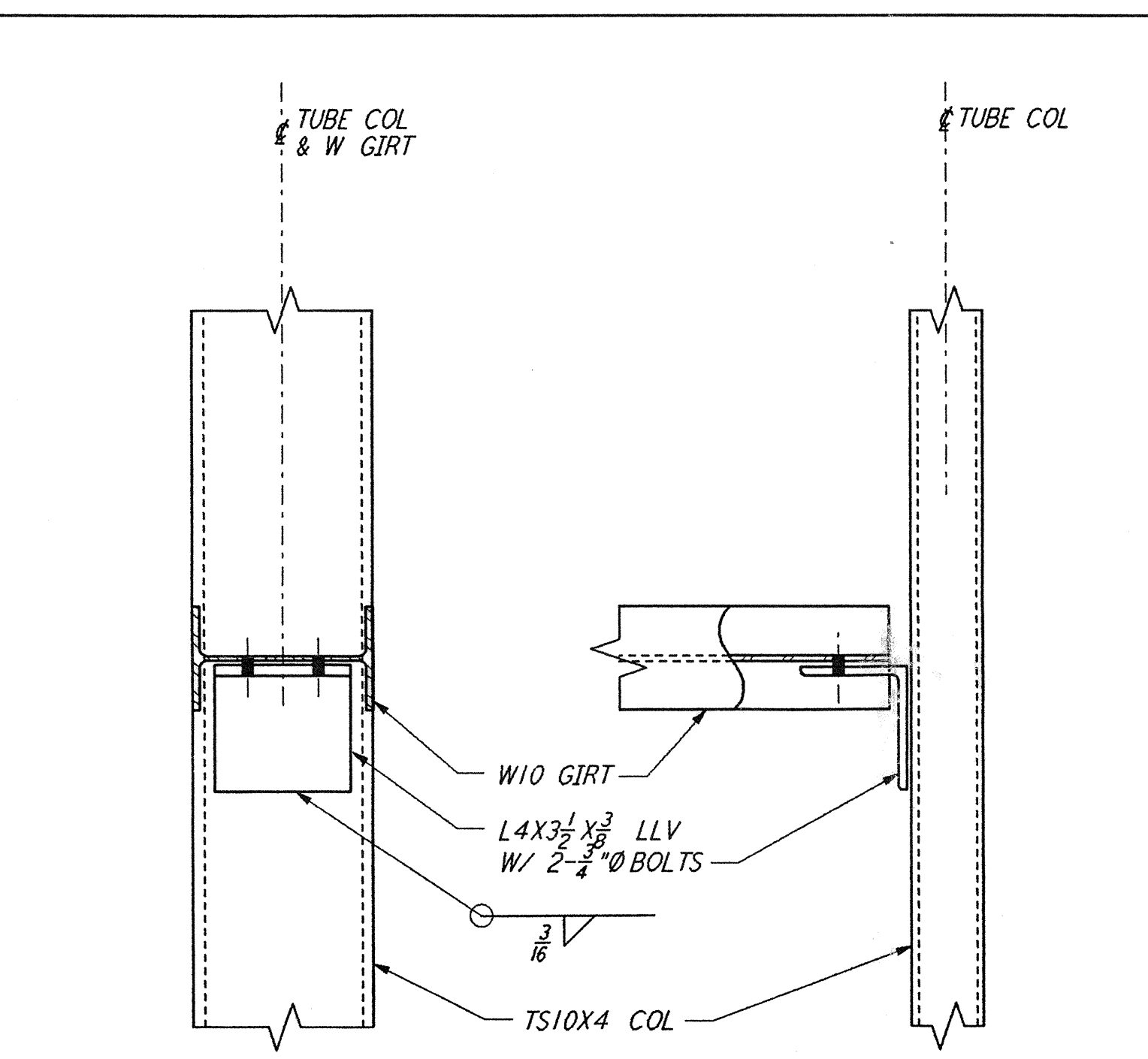
DETAIL 10



DETAIL 11



DETAIL 12



DETAIL 13

NOTES:
 1. FOR GENERAL NOTES, ABBREVIATIONS AND SYMBOLS, SEE DRAWING S-001.

Date Plotted: 4/11/96	LIGO-D960292-B-D
TM #: 28	Contractor: WAF-S-007, REV. B
Date: 4/11/96	Approved: OAL0857-CD-V
TM #:	LIGO:
Date: / /	Approved:
Gen'l Transmittal:	LIGO:
Date: / /	Approved:

NO.	DATE	BY	CHKD	ENGR	PROJ	DESCRIPTION
B	4-19-96	MCS	DM	PH	TDM	FINAL DESIGN REVIEW & BID
A	10-31-95					PRELIMINARY DESIGN REVIEW

DRAWN	MCS
CHECKED	
ENGINEER	
PROJ	

PARSONS
 100 WEST WALNUT STREET
 PASADENA, CALIFORNIA

LIGO
 CALIFORNIA INSTITUTE OF TECHNOLOGY
 MASSACHUSETTS INSTITUTE OF TECHNOLOGY

LASER INTERFEROMETER
 GRAVITATIONAL-WAVE OBSERVATORY
 SITE NO. 1 - HANFORD, WASHINGTON

TITLE	STRUCTURAL STANDARD STRUCTURAL STEEL CONNECTION DETAILS SHEET 4
SCALE	NONE
CONTRACT NUMBER	PP150969
PROJECT NUMBER	8094
SHEET NUMBER	WA-S-007

LIGO-D960292-B-D

This document and the design it covers are the property of PARSONS. They are loaned only with the borrower's expressed written agreement that they will not be reproduced, copied, loaned, exhibited, or used in any other way, except by written consent from PARSONS to the borrower.