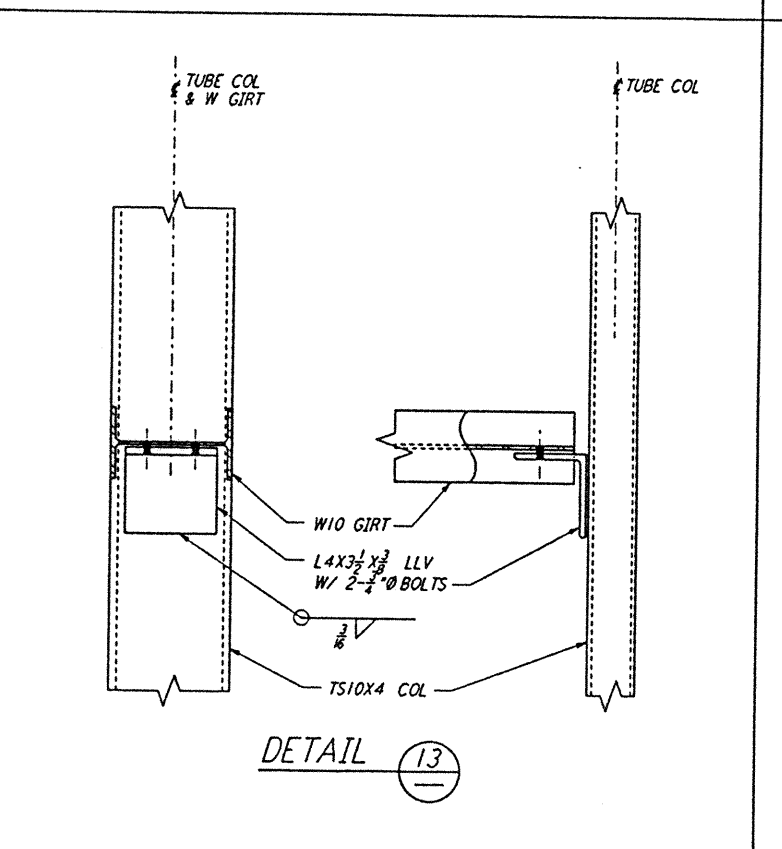
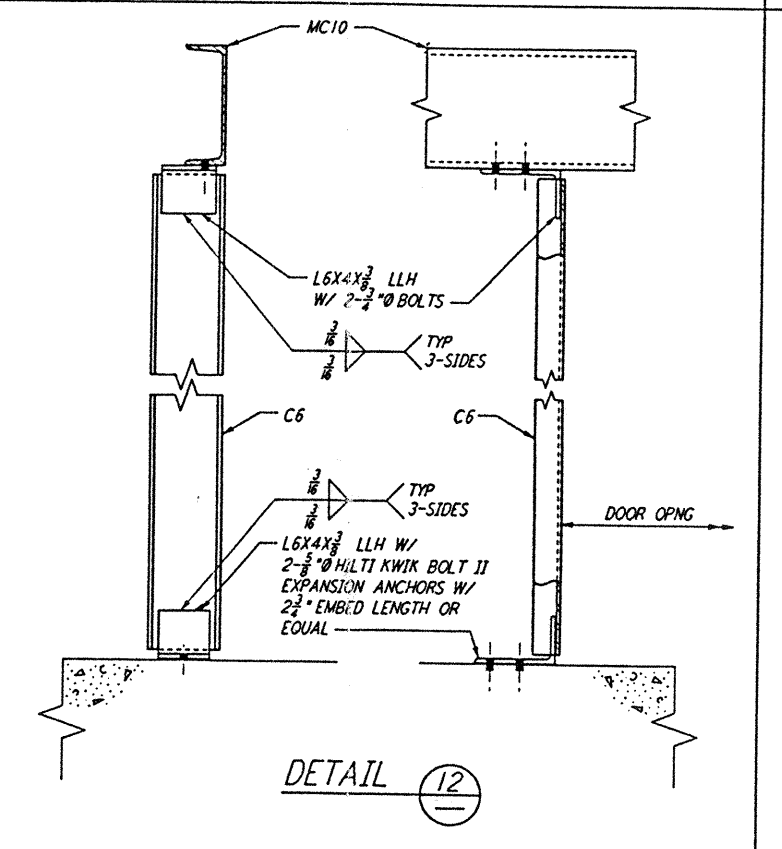
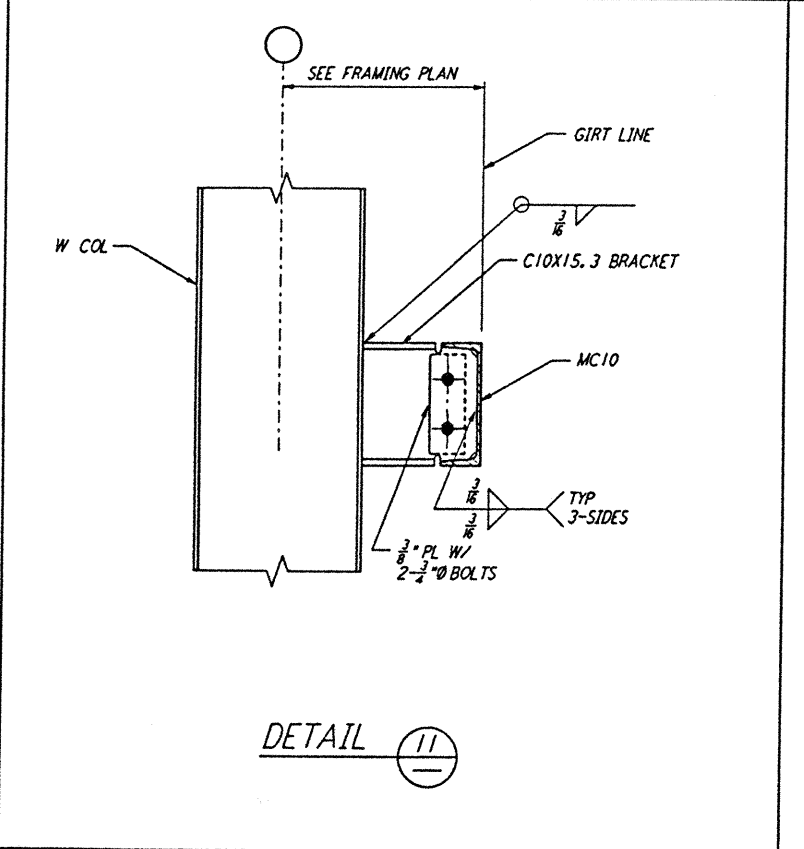


| BUILDING ID | DOOR ID | DIMENSION "A" | FROM GRID (X) | TOWARD GRID (Y) |
|-------------------|---------|---------------|---------------|-----------------|
| LVEA | 101B | 7 1/2' | 6 | 7 |
| OSB | 170A | 9'-9 1/2" | K.3 | L.3 |
| OSB | 171B | 6 1/2' | 11.3 | 12.3 |
| OSB | 172B | 6 1/2' | 11.3 | 12.3 |
| OSB | 173B | 3 1/2' | M.3 | L.3 |
| MID & END STATION | 205A | 4 1/2' | C | D |
| MID & END STATION | 205B | 8 1/2' | B | A |
| LVEA | 101B | OMIT | | B |



NOTES:
 1. FOR GENERAL NOTES, ABBREVIATIONS AND SYMBOLS, SEE DRAWING S-001.

| NO. | DATE | BY | CHKD | ENGR | PROJ | DESCRIPTION |
|-----|----------|-----|------|------|-------|---------------------------|
| B | 4-19-96 | MCS | bon | PH | LA/PL | FINAL DESIGN REVIEW & BID |
| A | 10-31-95 | | | | | PRELIMINARY DESIGN REVIEW |

| | |
|----------|-----|
| DRAWN | MCS |
| CHECKED | |
| ENGINEER | |
| PROJ | |

PARSONS
 100 WEST WALNUT STREET
 PASADENA, CALIFORNIA

LIGO
 CALIFORNIA INSTITUTE OF TECHNOLOGY
 MASSACHUSETTS INSTITUTE OF TECHNOLOGY

LASER INTERFEROMETER
 GRAVITATIONAL-WAVE OBSERVATORY
 SITE NO. 1 - HANFORD, WASHINGTON

| | | | |
|----------------|---------------------|-----------------|----------|
| TITLE | STRUCTURAL STANDARD | SHEET NUMBER | WA-S-007 |
| SCALE | NONE | CONTRACT NUMBER | PP150969 |
| PROJECT NUMBER | 8094 | REVISION | |

This document and the design it covers are the property of PARSONS. They are loaned only with the borrower's expressed written agreement that they will not be reproduced, copied, loaned, exhibited, or used in any other way, except by written consent from PARSONS to the borrower.