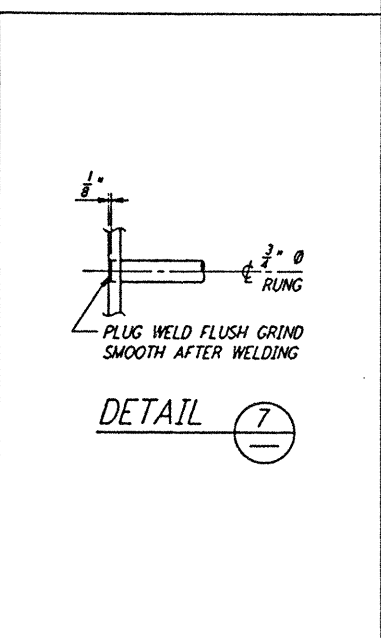
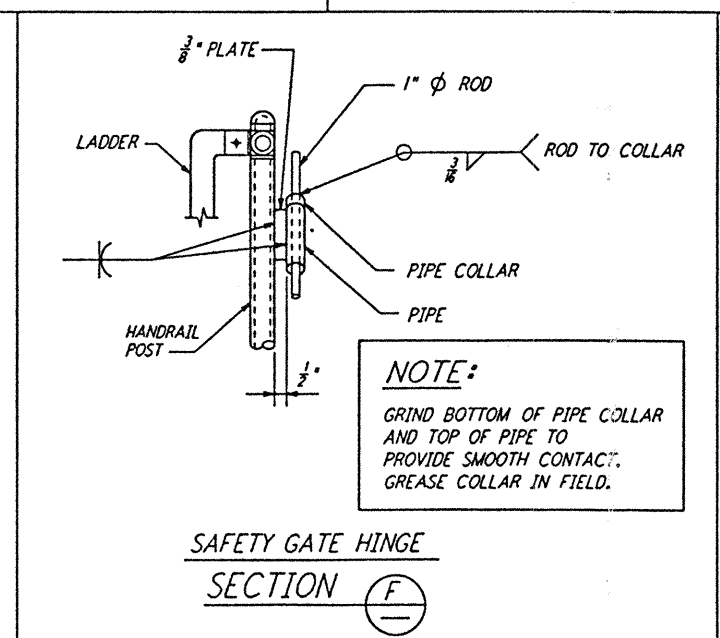
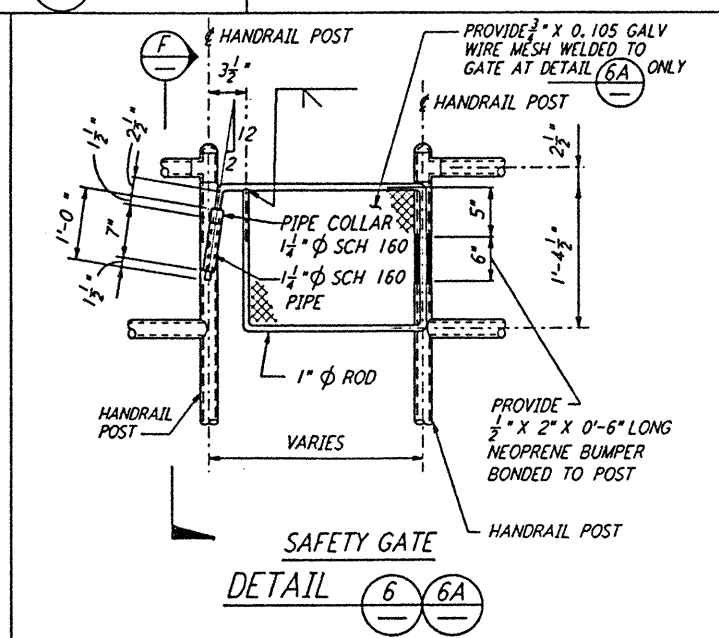
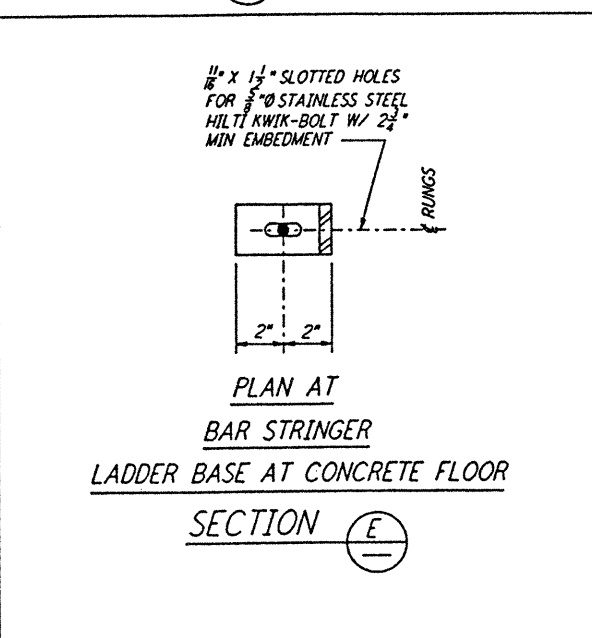
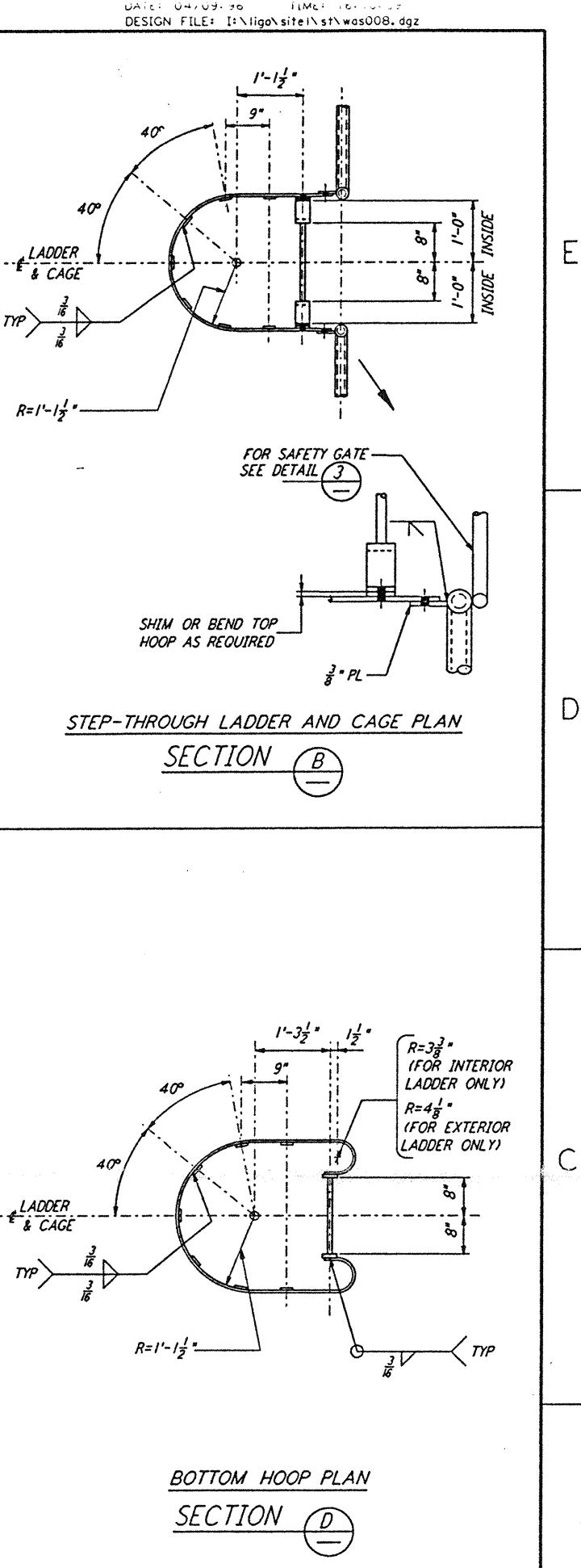
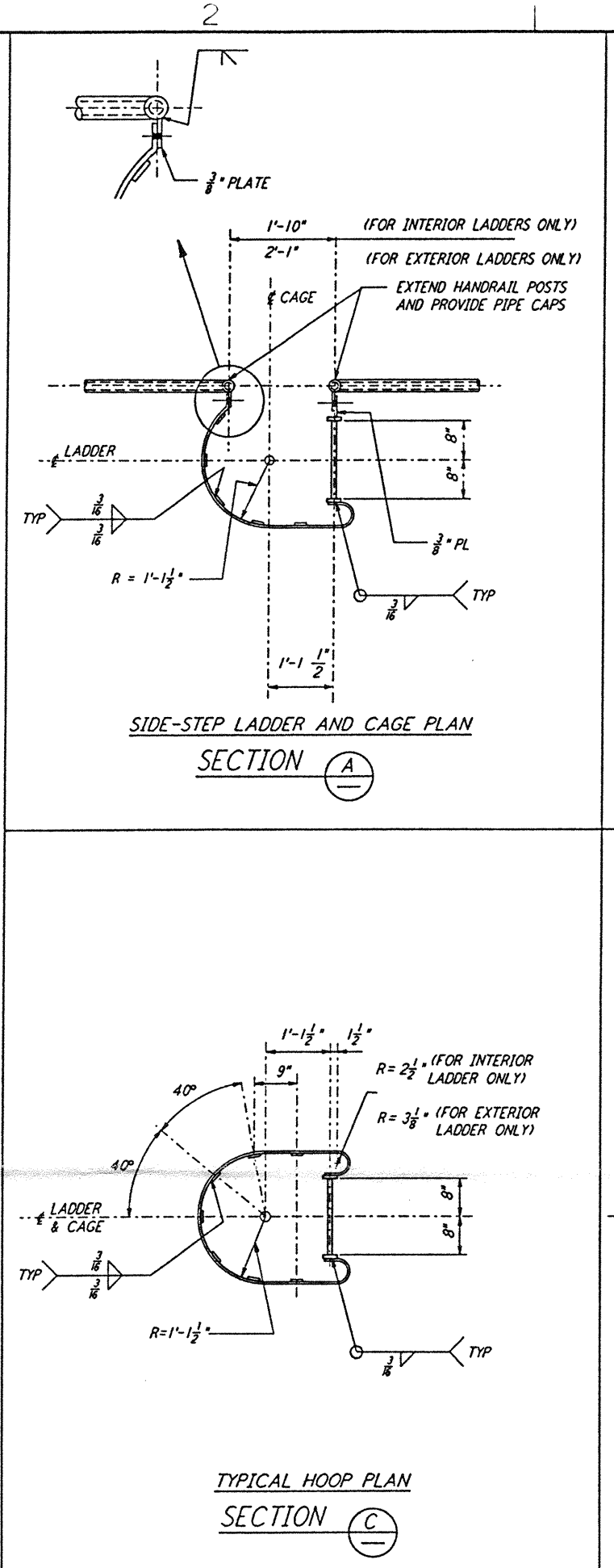
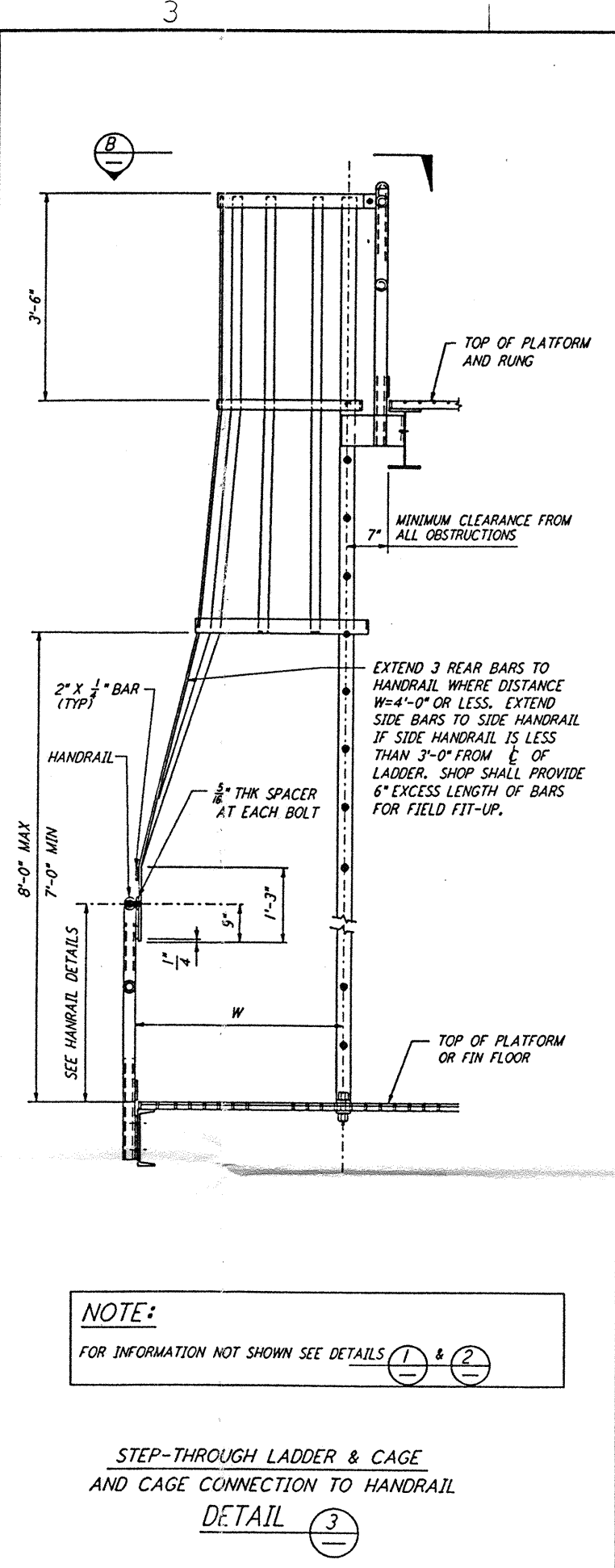
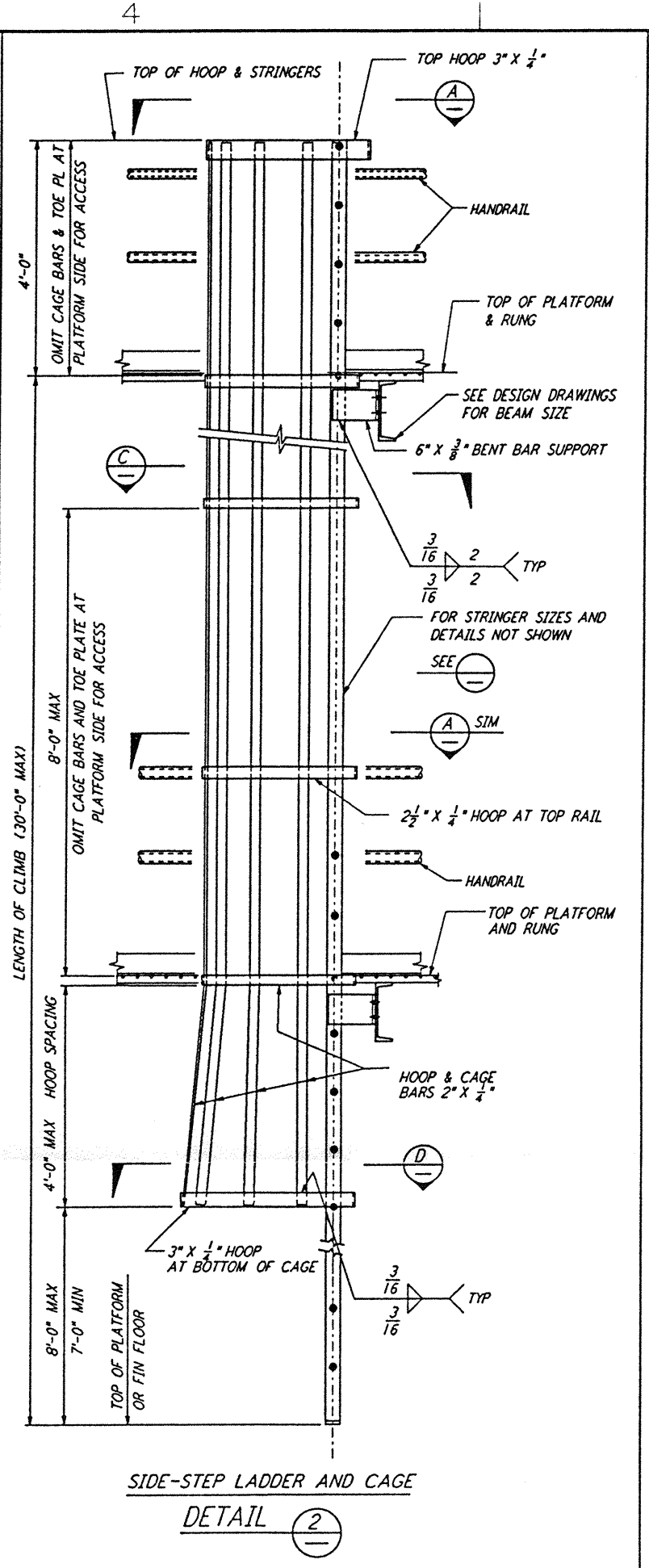
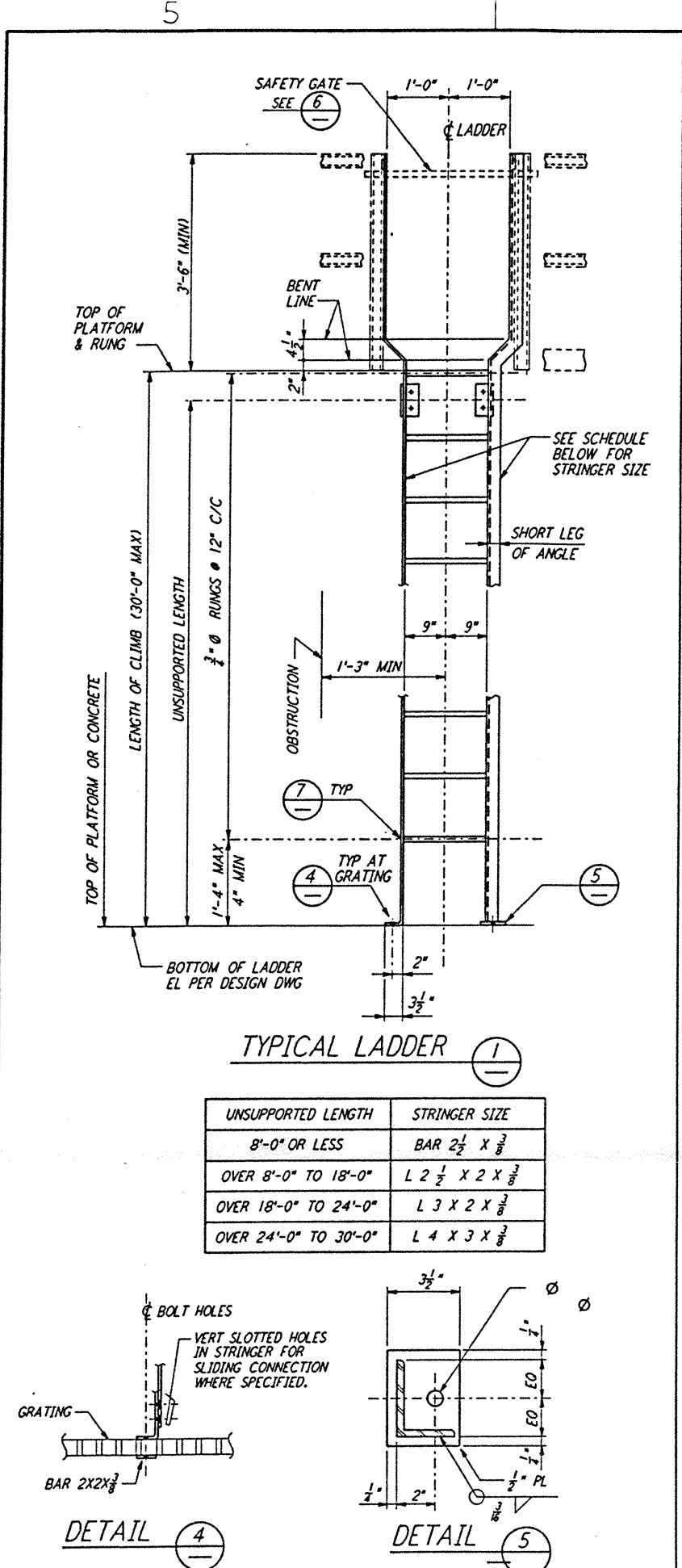


not be reproduced, copied, loaned, exhibited, or used in any other way, except by written consent from PARSONS to the borrower.

This document and the design it covers are the property of PARSONS. They are loaned only with the borrower's expressed written agreement that they will



- NOTES:**
- FOR GENERAL NOTES, SYMBOLS AND ABBREVIATIONS SEE DRAWING 5-001.
 - ALL BURRS AND SHARP EDGES SHALL BE REMOVED FROM THE LADDERS, CAGES AND SAFETY BARS.
 - ALL INTERMEDIATE CAGE HOOPS SHALL BE SPACED EQUALLY AND SHALL NOT EXCEED 4 FEET. IF CAGE LENGTH EXCEEDS 20 FEET, LADDER MUST BE EQUIPPED WITH A 3" HOOP PREFERABLY AT THE MIDWAY POINT OF THE CAGE.
 - LADDERS SERVING PLATFORMS OR LANDINGS 4 FEET OR MORE ABOVE GRADE AND ALL PLATFORMS REQUIRING A RAILING SHALL BE EQUIPPED WITH A SAFETY GATE.

NO.	DATE	BY	CHKD	ENGR	PROJ	DESCRIPTION
B	4-19-96	MCS	bbm	PA	2/01	FINAL DESIGN REVIEW & BID
A	10-31-95					PRELIMINARY DESIGN REVIEW

DRAWN	MCS
CHECKED	
ENGINEER	
PROJ	

CALIFORNIA INSTITUTE OF TECHNOLOGY
MASSACHUSETTS INSTITUTE OF TECHNOLOGY

100 WEST WALNUT STREET
PASADENA, CALIFORNIA

LASER INTERFEROMETER GRAVITATIONAL-WAVE OBSERVATORY SITE NO. 1 - HANFORD, WASHINGTON	
TITLE	STRUCTURAL STANDARD STRUCTURAL STEEL LADDER DETAILS
SHEET NUMBER	WA-S-008
PROJECT NUMBER	PPI50969 8094
REVISION	

LIG0-D960273-B-1

LIGOWAF-BOR