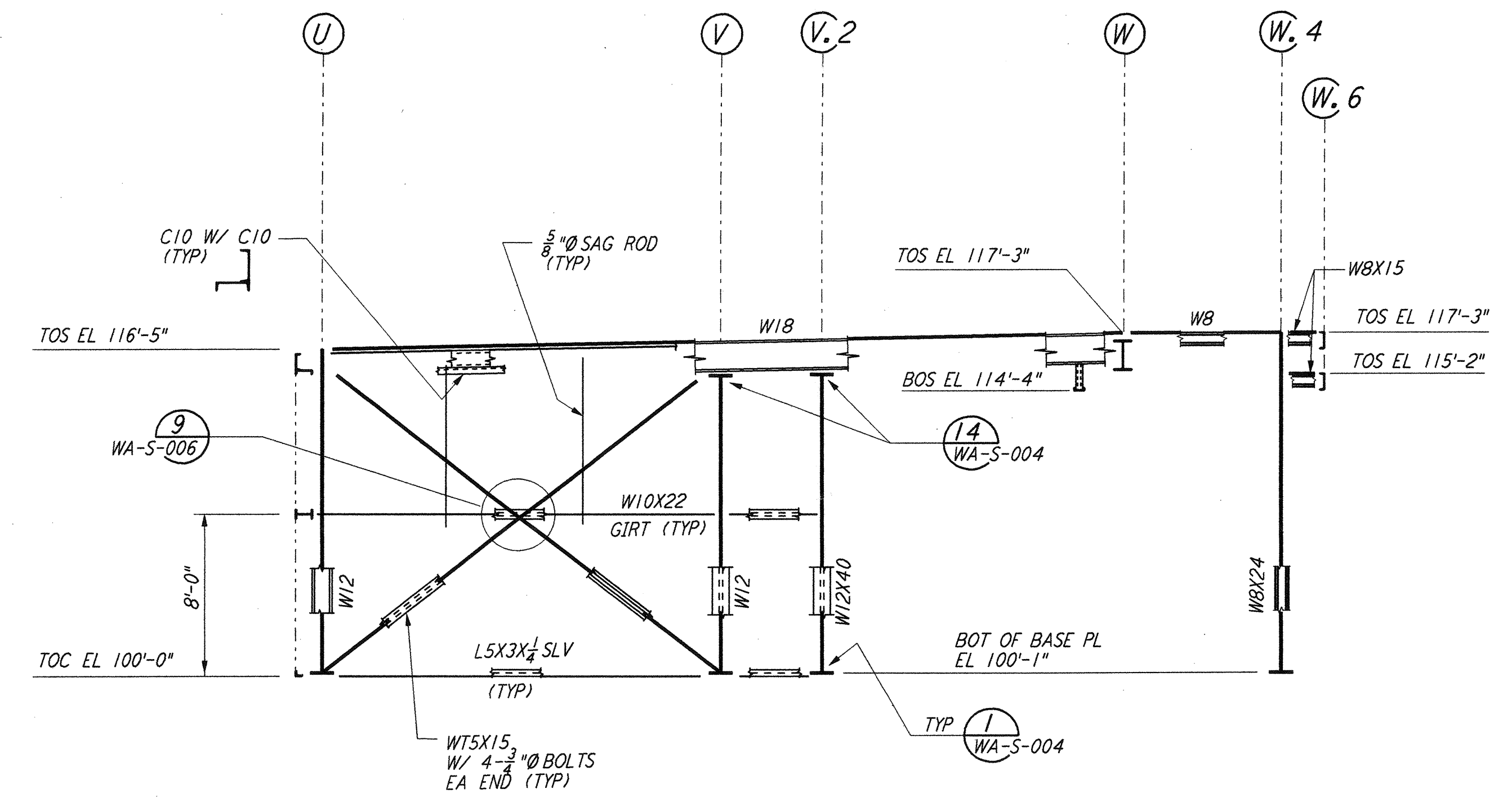
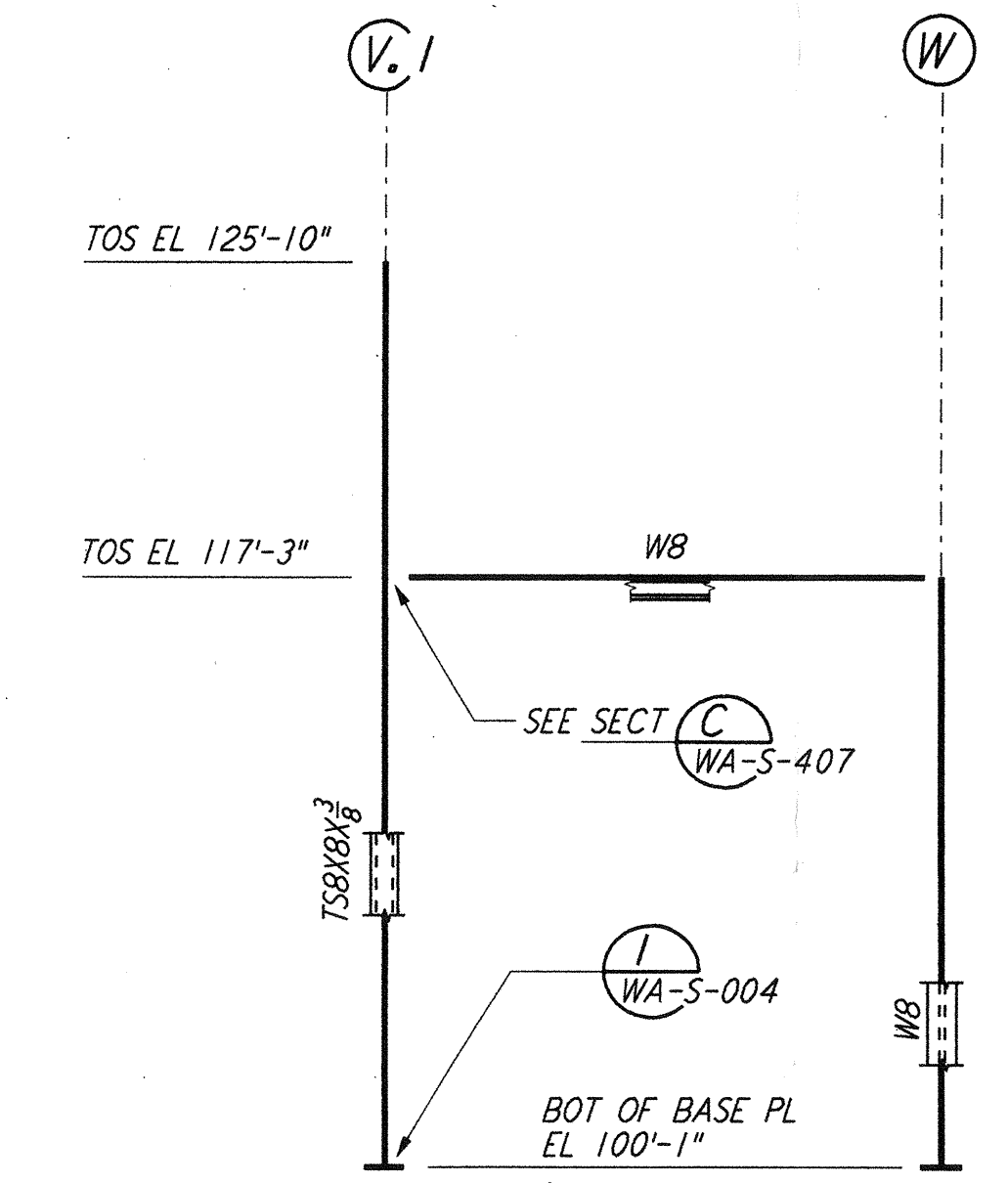


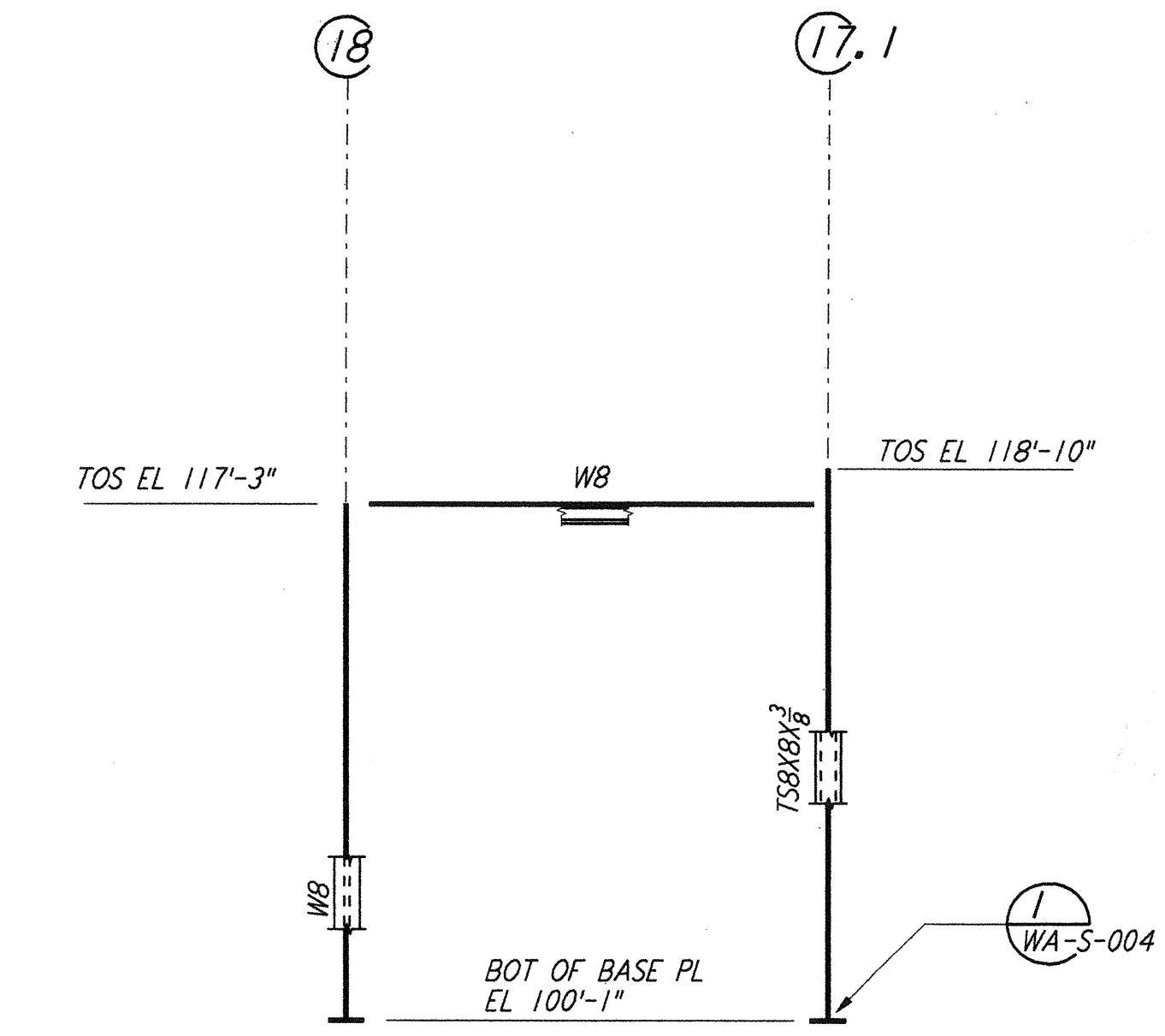
FRAMING ELEVATION AT COLUMN LINE 17  
 $\frac{3}{16}'' = 1'-0''$



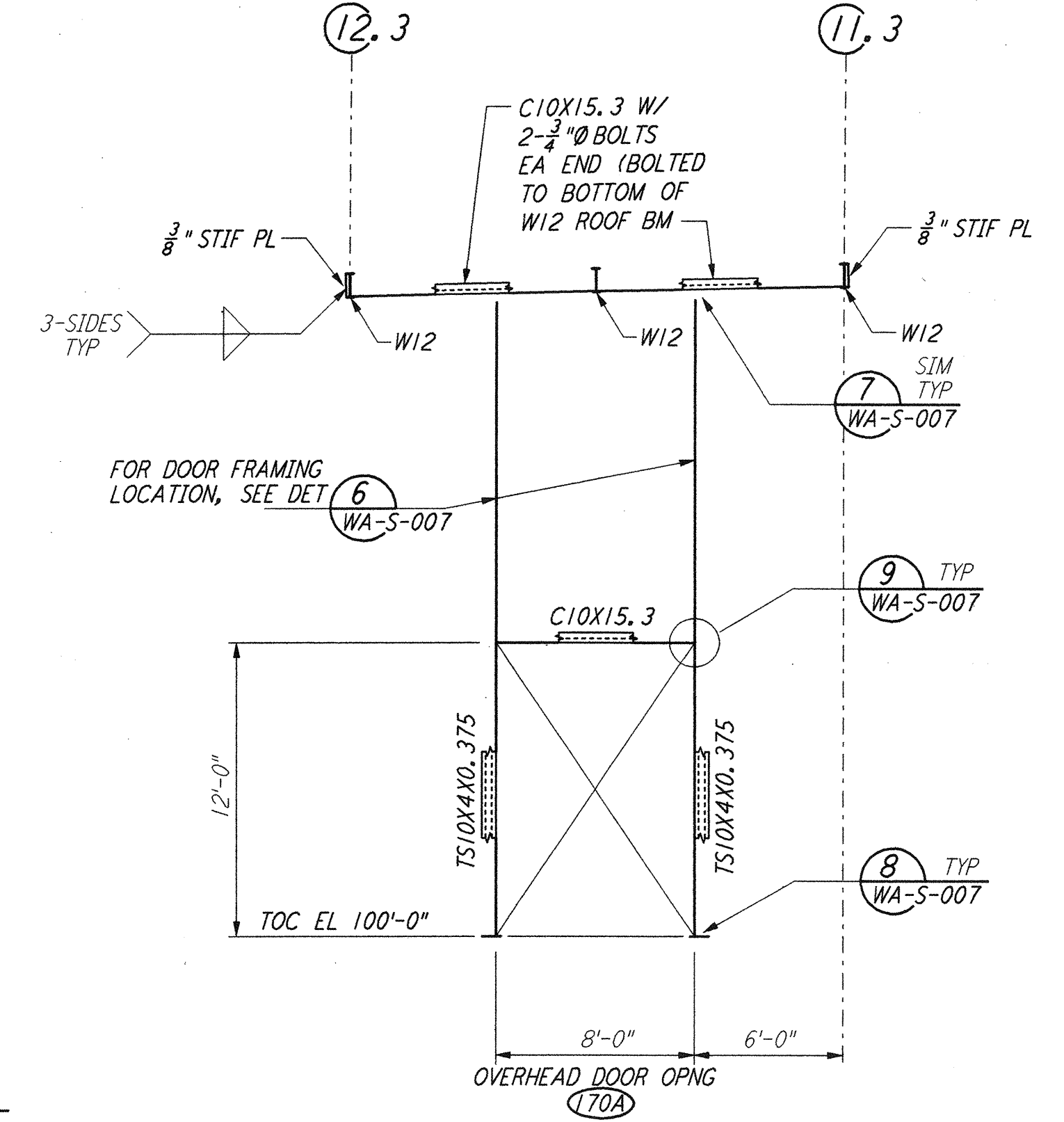
FRAMING ELEVATION AT COLUMN LINE 18  
 $\frac{3}{16}'' = 1'-0''$



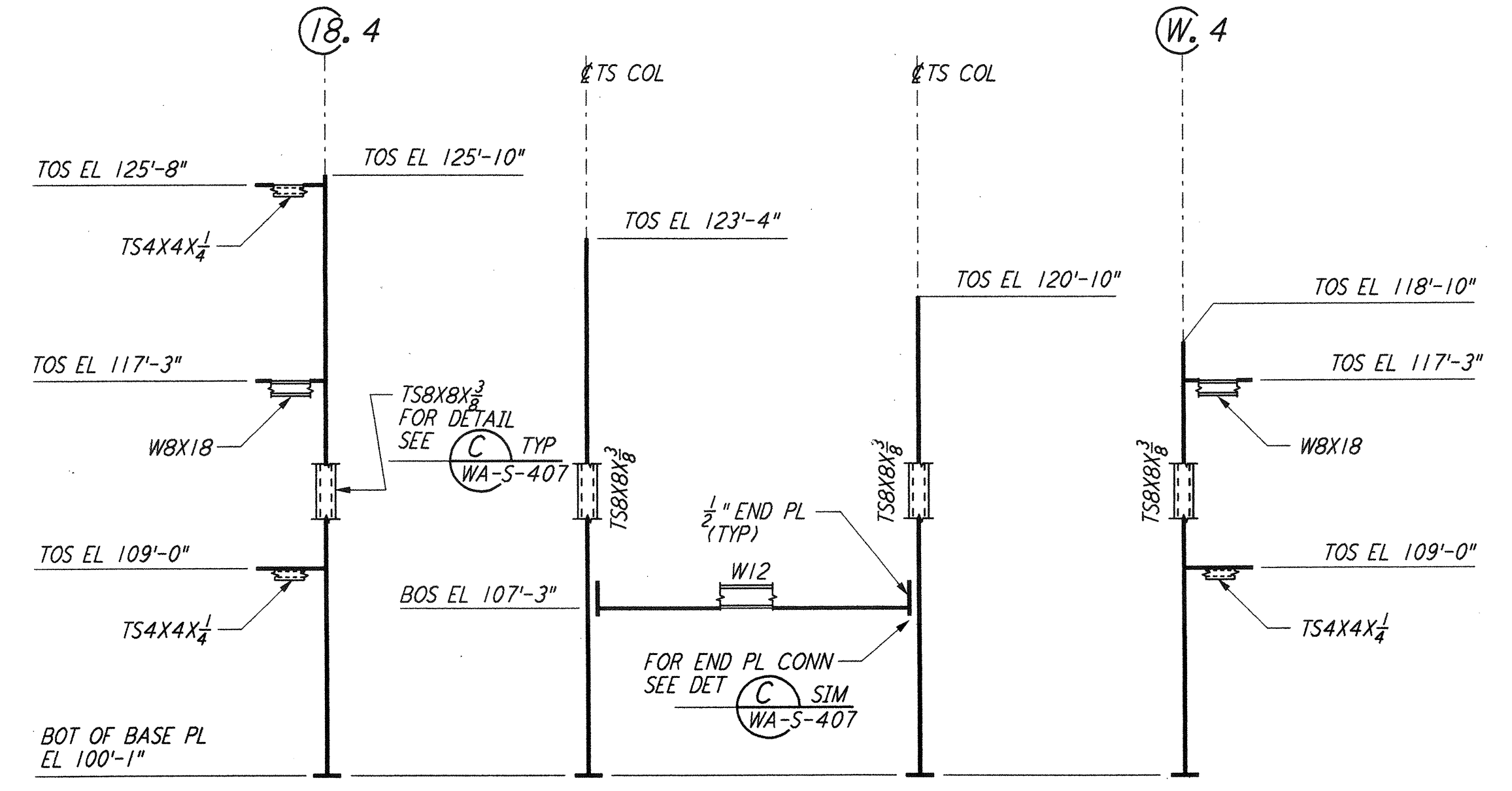
FRAMING ELEVATION AT COLUMN LINE 18.4  
 $\frac{3}{16}'' = 1'-0''$



FRAMING ELEVATION AT COLUMN LINE W.4  
 $\frac{3}{16}'' = 1'-0''$

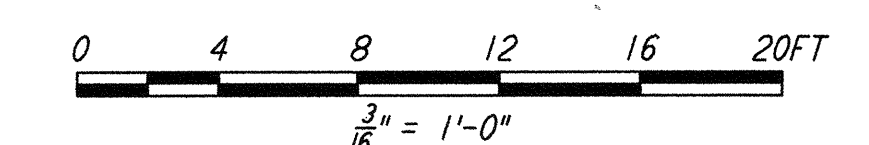


SECTION A REF  
 $\frac{3}{16}'' = 1'-0''$



DEVELOPED FRAMING ELEVATION  
 $\frac{3}{16}'' = 1'-0''$

- NOTES:
- FOR GENERAL NOTES, ABBREVIATIONS AND SYMBOLS SEE DRAWING WA-S-001.
  - FOR CHANNEL, GIRT AND EAVE STRUT CONNECTION DETAILS SEE DRAWING WA-S-005.
  - FOR W BEAM TO COLUMN WEB/FLANGE CONNECTIONS, SEE DETAILS (6) WA-S-004 & (4) WA-S-007 TYPICAL UNLESS OTHERWISE NOTED.
  - FOR BASE ANGLE (LSX3) CONNECTIONS, SEE SECTION (A) WA-S-003.
  - FOR VERT BRGC CONNECTIONS SEE (2) WA-S-006, (8) WA-S-006, (1) WA-S-007, (2) WA-S-007 TYP UON.



LIGO-D960304-01-0

NO.	DATE	BY	CHKD	ENGR	PROJ	DESCRIPTION
1	6-15-98	CKT	BP	BP	P.P.	ISSUED FOR AS-BUILT

ISSUED FOR CONSTRUCTION	DATE
DRAWN	MCS 6-24-96
CHECKED	DDM 7-2-96
ENGINEER	BP 6-18-96
PROJ	MDW 7-9-96

AS-BUILT DRAWINGS

**PARSONS**  
 100 WEST WALNUT STREET  
 PASADENA, CALIFORNIA

**LIGO**  
 CALIFORNIA INSTITUTE OF TECHNOLOGY  
 MASSACHUSETTS INSTITUTE OF TECHNOLOGY

LASER INTERFEROMETER  
 GRAVITATIONAL-WAVE OBSERVATORY  
 SITE NO. 1 - HANFORD, WASHINGTON

STRUCTURAL CORNER STATION  
 OSB FRAMING ELEVATIONS  
 SHEET 7

SCALE: AS NOTED  
 CONTRACT NUMBER: PP150969  
 PROJECT NUMBER: 8094

WA-S-124

This document and the design it covers are the property of PARSONS. They are loaned only with the borrower's expressed written agreement that they will not be reproduced, copied, loaned, exhibited, or used in any other way, except by written consent from PARSONS to the borrower.

06 Jul 98 16:18:45 1998 CAPLOT01\AES3-Y96E2.DWG 52085 K:\V96E2\124.dwg LIGOWAF.BOR