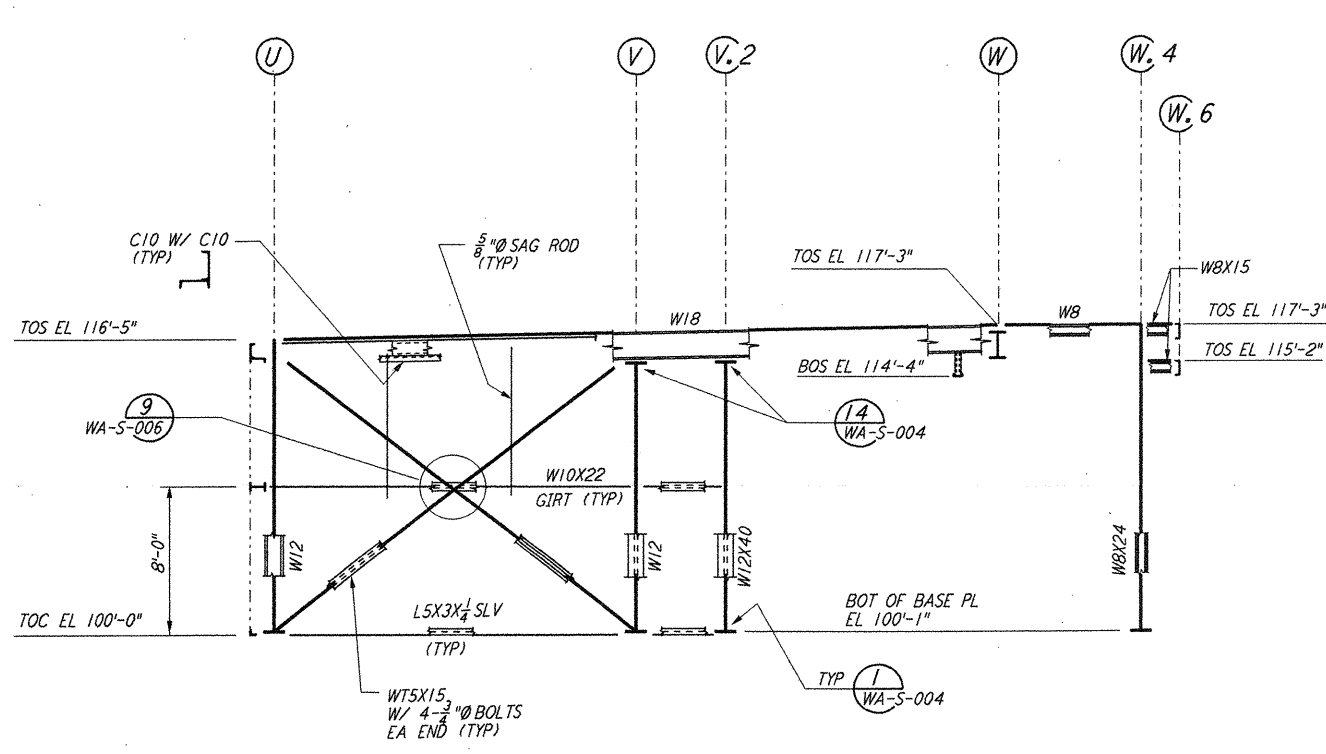
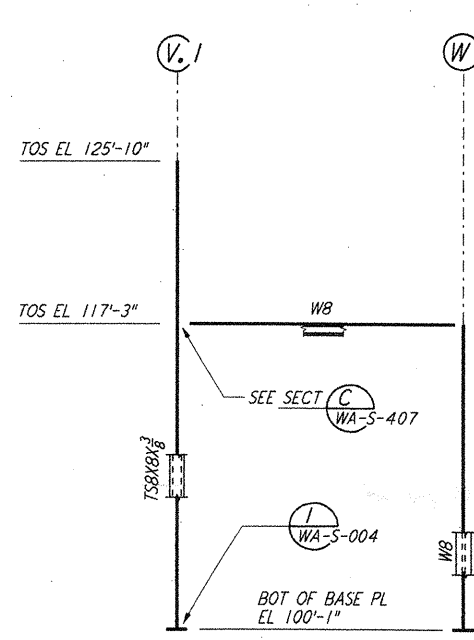


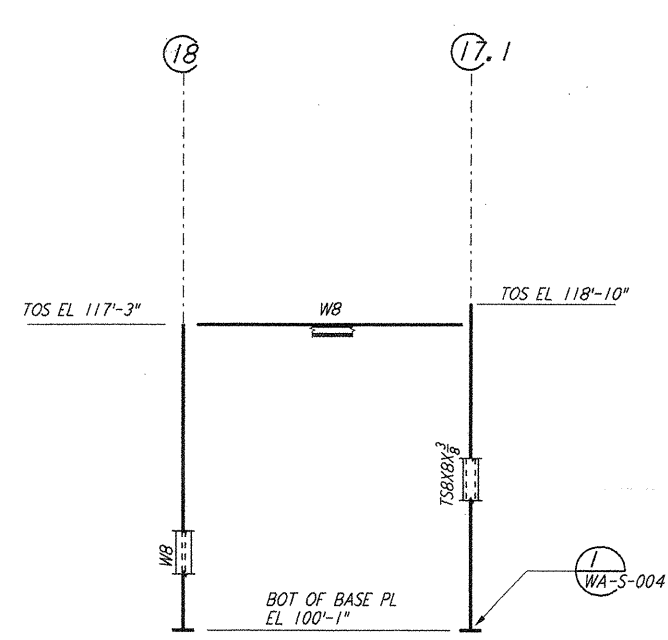
FRAMING ELEVATION AT COLUMN LINE 17
 $\frac{3}{8}'' = 1'-0''$



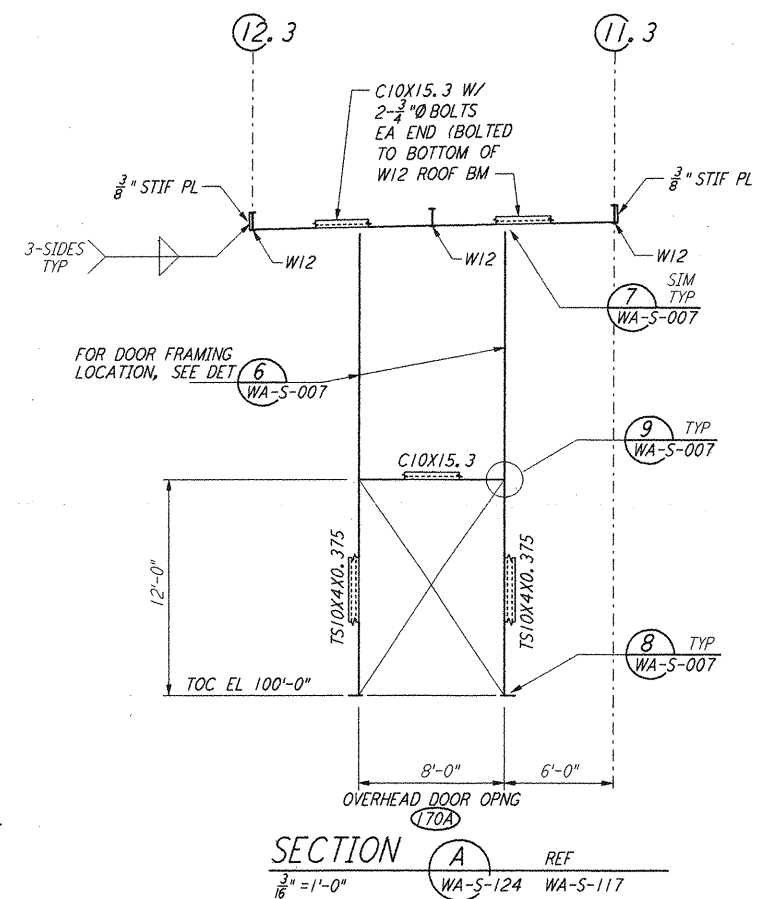
FRAMING ELEVATION AT COLUMN LINE 18
 $\frac{3}{8}'' = 1'-0''$



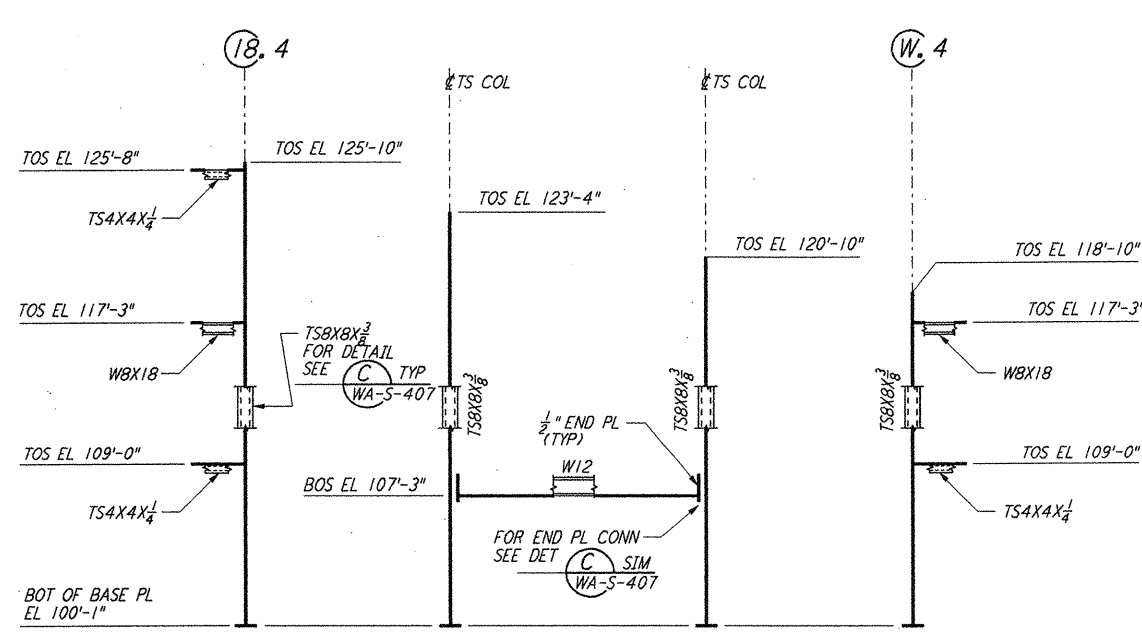
FRAMING ELEVATION AT COLUMN LINE 18.4
 $\frac{3}{8}'' = 1'-0''$



FRAMING ELEVATION AT COLUMN LINE W.4
 $\frac{3}{8}'' = 1'-0''$

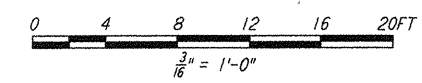


SECTION A
 $\frac{3}{8}'' = 1'-0''$



DEVELOPED FRAMING ELEVATION
 $\frac{3}{8}'' = 1'-0''$

- NOTES:
- FOR GENERAL NOTES, ABBREVIATIONS AND SYMBOLS SEE DRAWING WA-S-001.
 - FOR CHANNEL, GIRT AND CAVE STRUT CONNECTION DETAILS SEE DRAWING WA-S-005.
 - FOR W BEAM TO COLUMN WEB/FLANGE CONNECTIONS, SEE DETAILS 3 WA-S-007, 4 WA-S-007, 5 WA-S-007 TYPICAL UNLESS OTHERWISE NOTED.
 - FOR BASE ANGLE (LSX3) CONNECTIONS, SEE SECTION A WA-S-003.
 - FOR VERT BRGC CONNECTIONS SEE 2 WA-S-006, 3 WA-S-006, 4 WA-S-007, 5 WA-S-007 TYP UNO.



NO.	DATE	BY	CHKD	ENGR	PROJ	DESCRIPTION
1	6-15-98	CKT	BP	MDW		ISSUED FOR AS-BUILT

ISSUED FOR CONSTRUCTION	DATE
DRAWN	MCS 6-24-96
CHECKED	DDM 7-2-96
ENGINEER	BP 6-18-96
PROJ	MDW 7-9-96

AS-BUILT DRAWINGS

PARSONS
 100 WEST WALNUT STREET
 PASADENA, CALIFORNIA

LIGO
 CALIFORNIA INSTITUTE OF TECHNOLOGY
 MASSACHUSETTS INSTITUTE OF TECHNOLOGY

**LASER INTERFEROMETER
 GRAVITATIONAL-WAVE OBSERVATORY
 SITE NO. 1 - HANFORD, WASHINGTON**

STRUCTURAL CORNER STATION OSB FRAMING ELEVATIONS SHEET 7

AS NOTED PPI50969 8094
WA-S-124

This document and the design it covers are the property of PARSONS. They are loaned only with the borrower's expressed written agreement that they will not be reproduced, copied, loaned, exhibited, or used in any other way, except by written consent from PARSONS to the borrower.

E
D
C
B
A
 Mon Jul 06 16:03:19 1998 C:\PLOT\DUQ\53\3862.DWG E2085 K:\V3862\124.dwg LIGOWAF.BOR