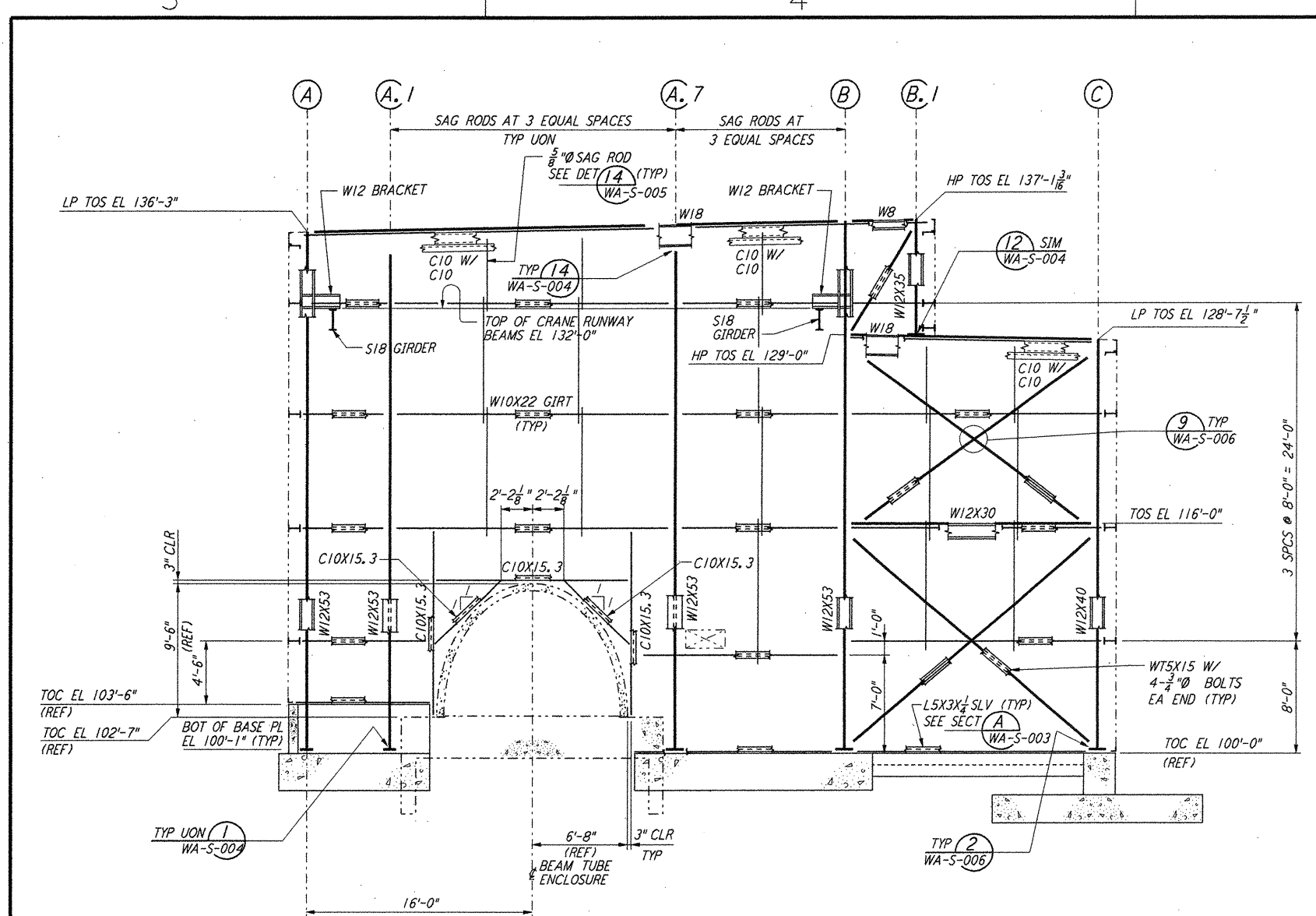
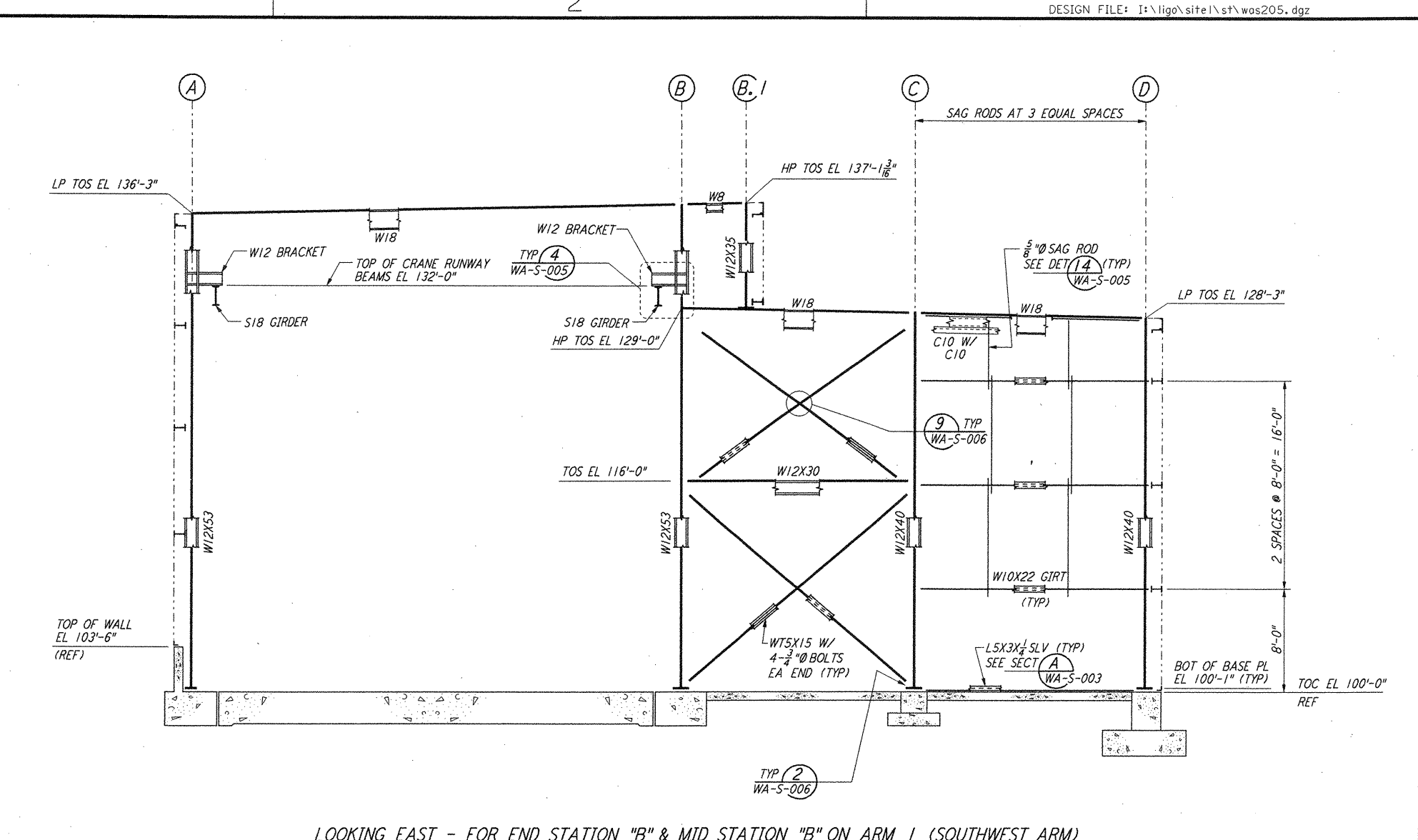


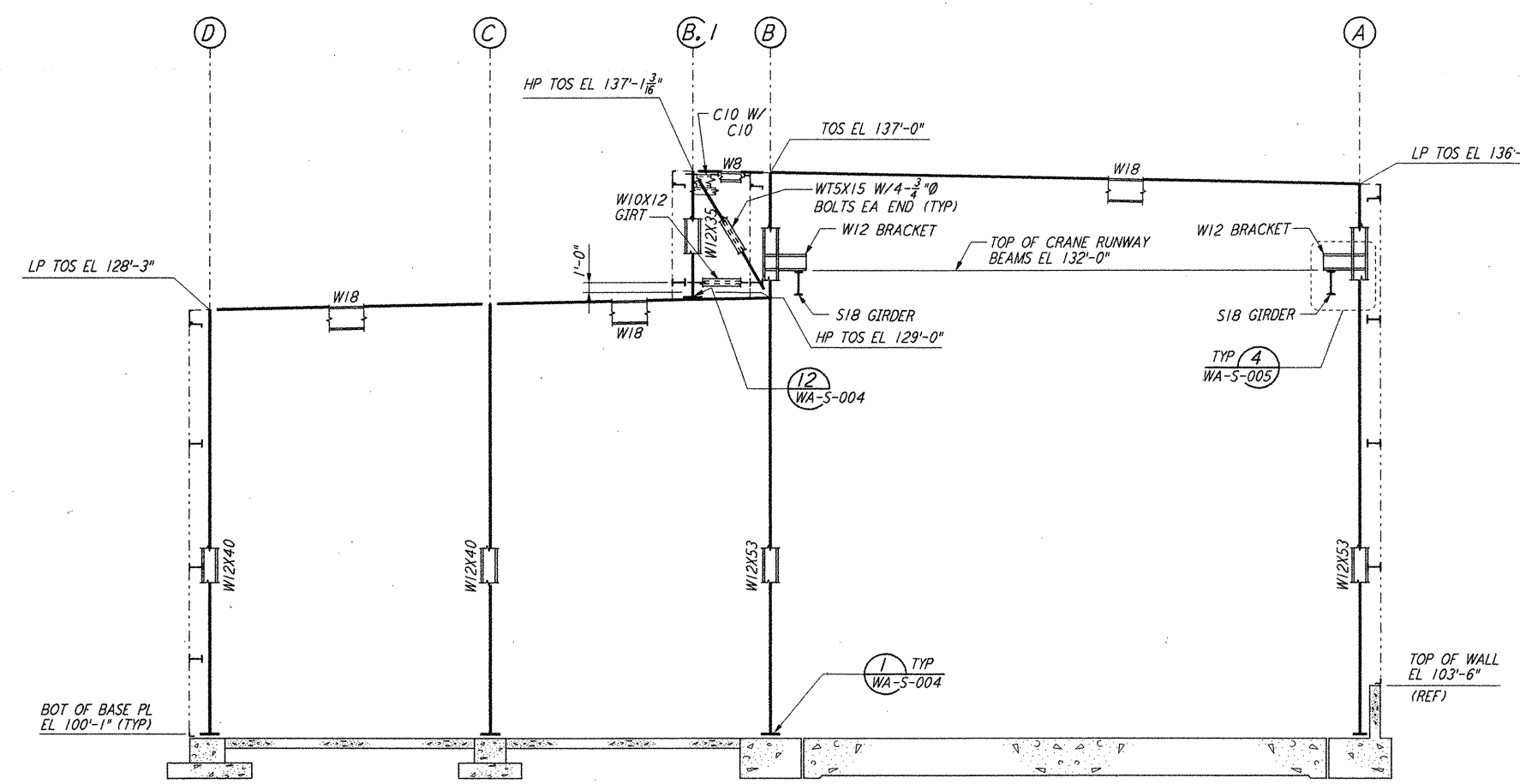
This document and the design it covers are the property of PARSONS. They are loaned only with the borrower's expressed written agreement that they will not be reproduced, copied, loaned, exhibited, or used in any other way, except by written consent from PARSONS to the borrower.



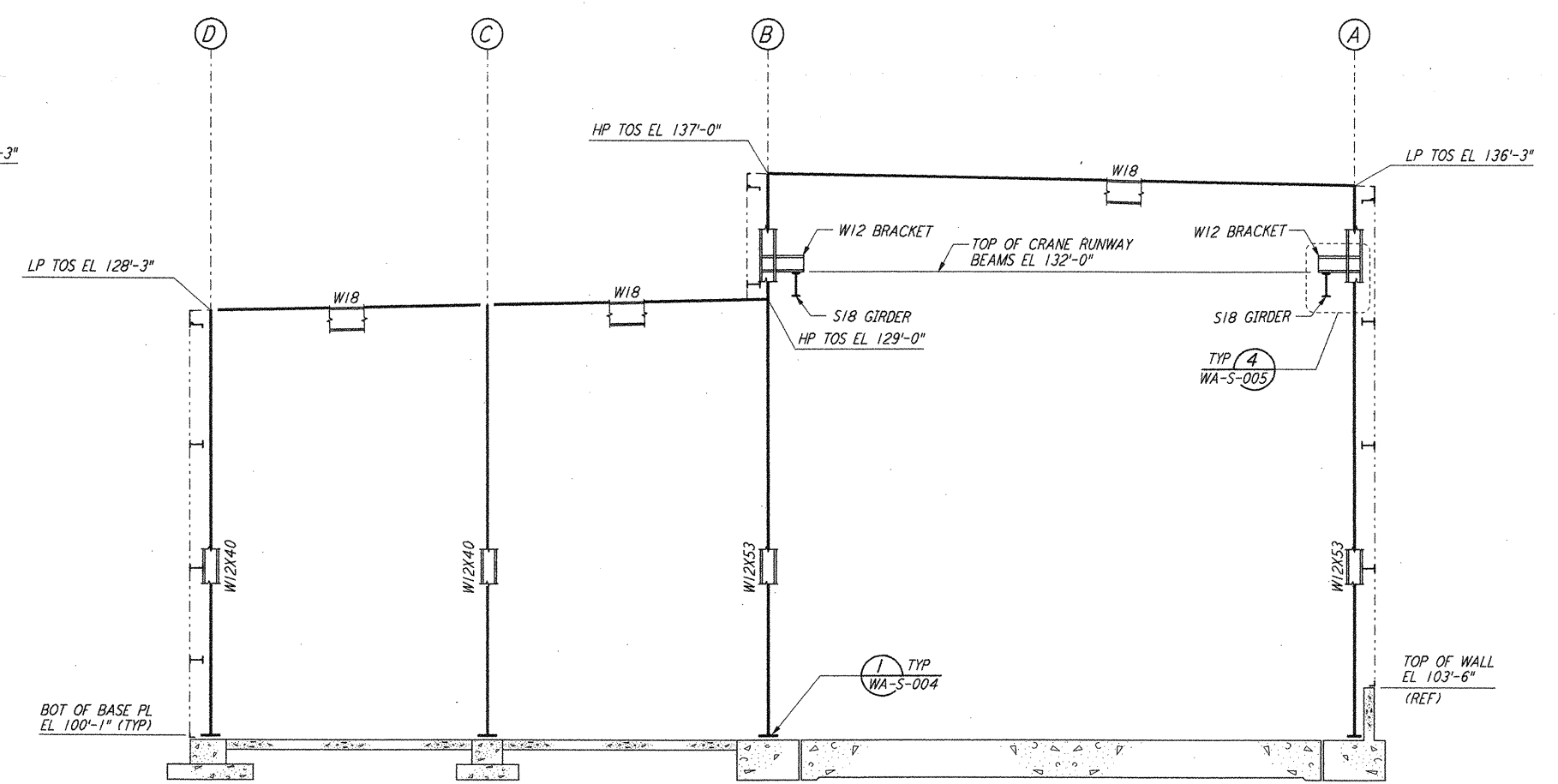
LOOKING EAST - FOR END STATION "B" & MID STATION "B" ON ARM 1 (SOUTHWEST ARM)
 LOOKING NORTH - FOR END STATION "A" & MID STATION "A" ON ARM 2 (NORTHWEST ARM)
 ELEVATION AT COLUMN LINE 1
 $\frac{3}{8}'' = 1'-0''$



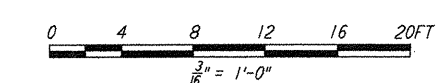
LOOKING EAST - FOR END STATION "B" & MID STATION "B" ON ARM 1 (SOUTHWEST ARM)
 LOOKING NORTH - FOR END STATION "A" & MID STATION "A" ON ARM 2 (NORTHWEST ARM)
 ELEVATION AT COLUMN LINE 2
 $\frac{3}{8}'' = 1'-0''$



LOOKING WEST - FOR END STATION "B" & MID STATION "B" ON ARM 1 (SOUTHWEST ARM)
 LOOKING SOUTH - FOR END STATION "A" & MID STATION "A" ON ARM 2 (NORTHWEST ARM)
 ELEVATION AT COLUMN LINE 3
 $\frac{3}{8}'' = 1'-0''$



LOOKING WEST - FOR END STATION "B" & MID STATION "B" ON ARM 1 (SOUTHWEST ARM)
 LOOKING SOUTH - FOR END STATION "A" & MID STATION "A" ON ARM 2 (NORTHWEST ARM)
 ELEVATION AT COLUMN LINE 4
 $\frac{3}{8}'' = 1'-0''$



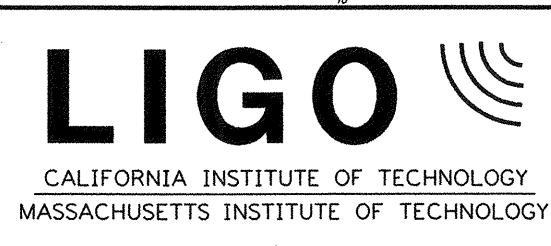
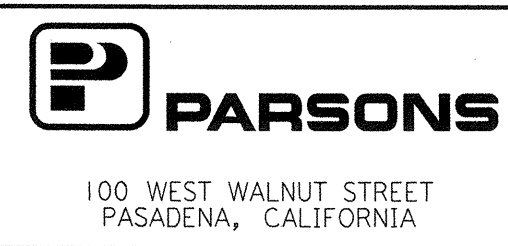
NOTES:
 1. FOR NOTES SEE DRAWING WA-S-108.
 2. FOR VERTICAL BRACING CONNECTIONS, SEE DETAIL (5) WA-S-006

LIGO-D960311-01-0

NO.	DATE	BY	CHKD	ENGR	PROJ	DESCRIPTION
1	6-15-98	CKT	HP	HP	PP	ISSUED FOR AS-BUILT

ISSUED FOR CONSTRUCTION			
DRAWN	MCS	6-24-96	
CHECKED	DDM	7-2-96	
ENGINEER	BP	6-28-96	
PROJ	MDW	7-9-96	

AS-BUILT DRAWINGS



LASER INTERFEROMETER
 GRAVITATIONAL-WAVE OBSERVATORY
 SITE NO. 1 - HANFORD, WASHINGTON

TITLE	STRUCTURAL MID & END STATIONS FRAMING ELEVATIONS SHEET 1
AS NOTED	PP150969
PROJECT NUMBER	8094
WA-S-205	