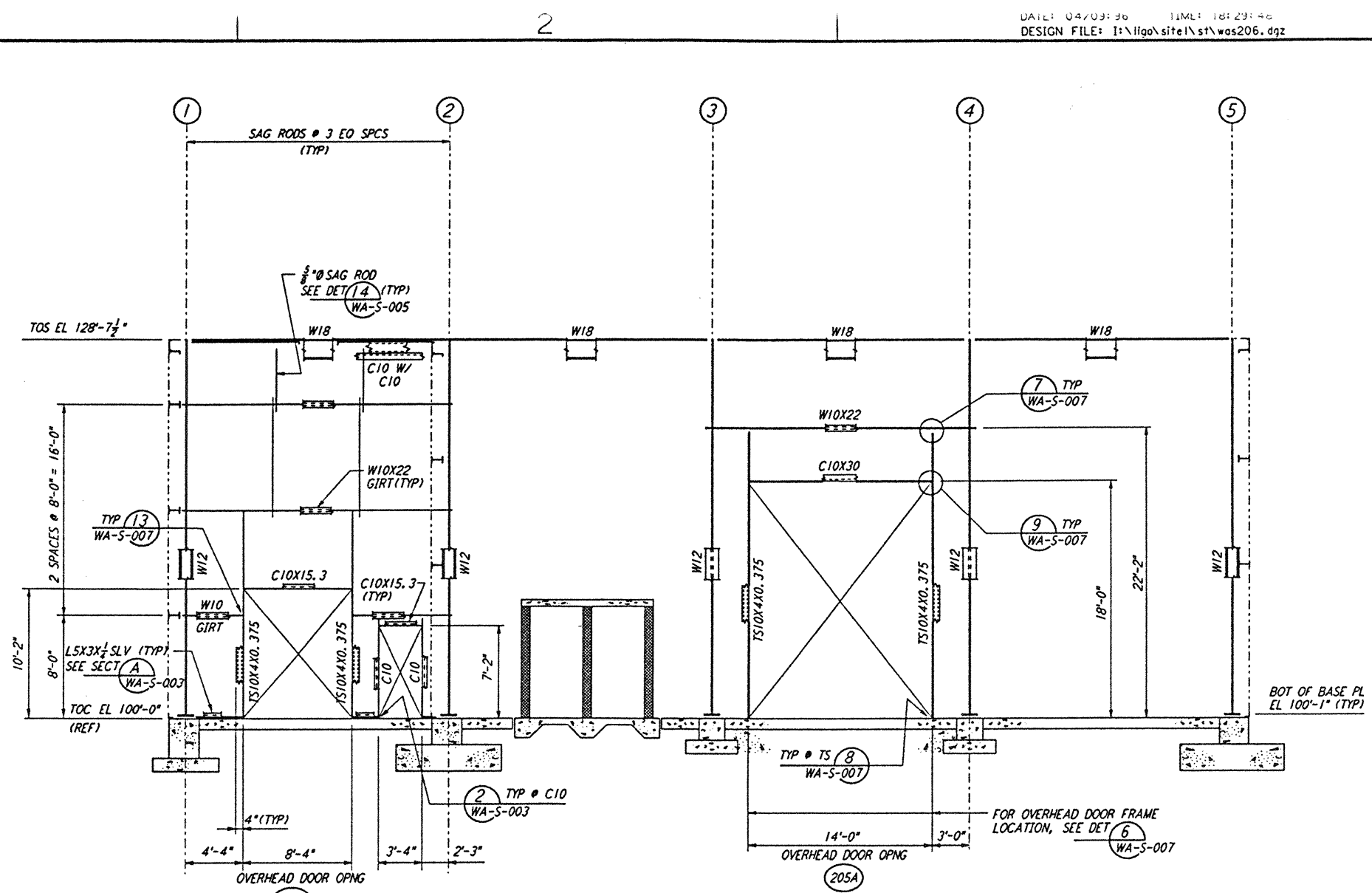
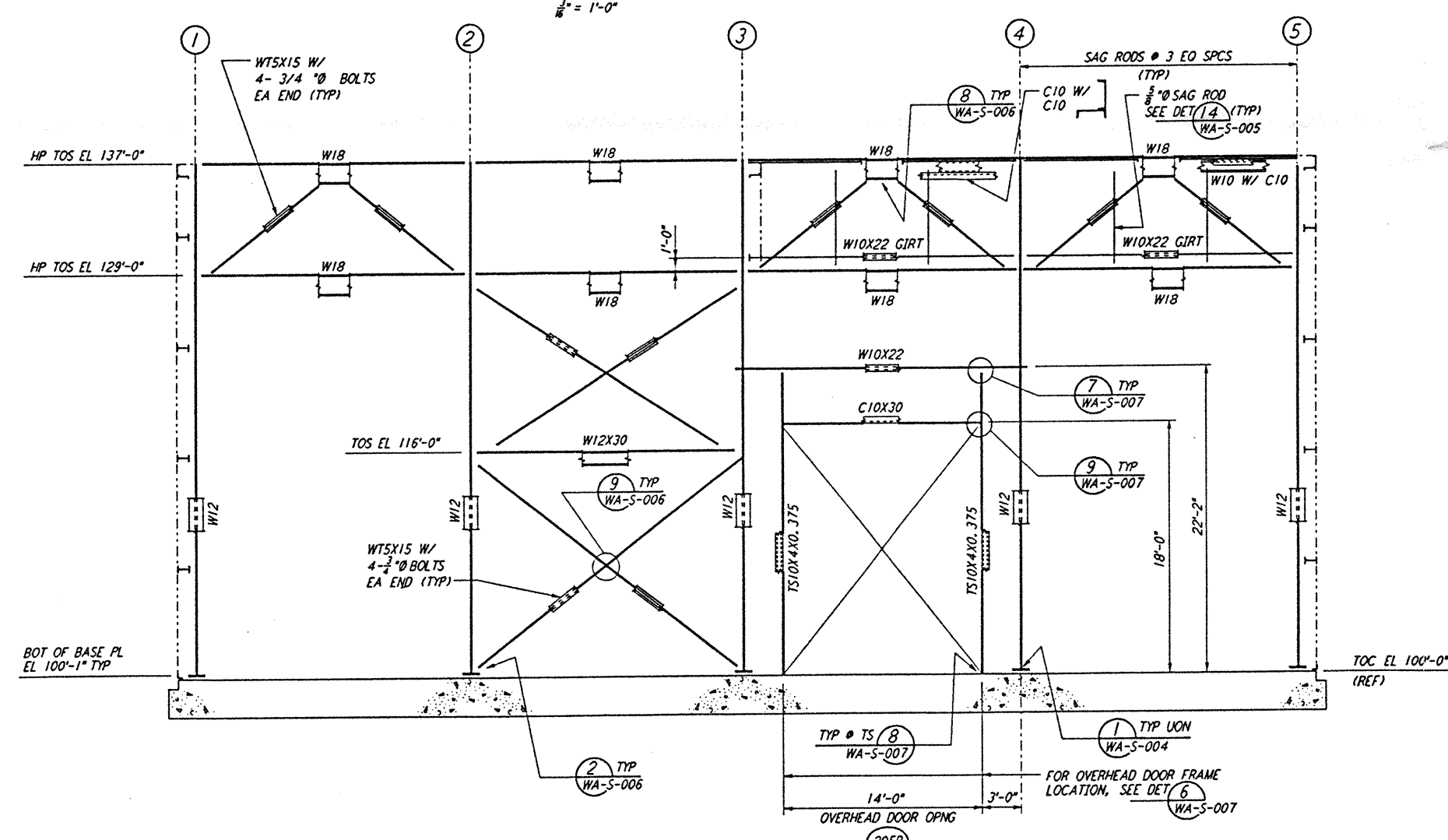


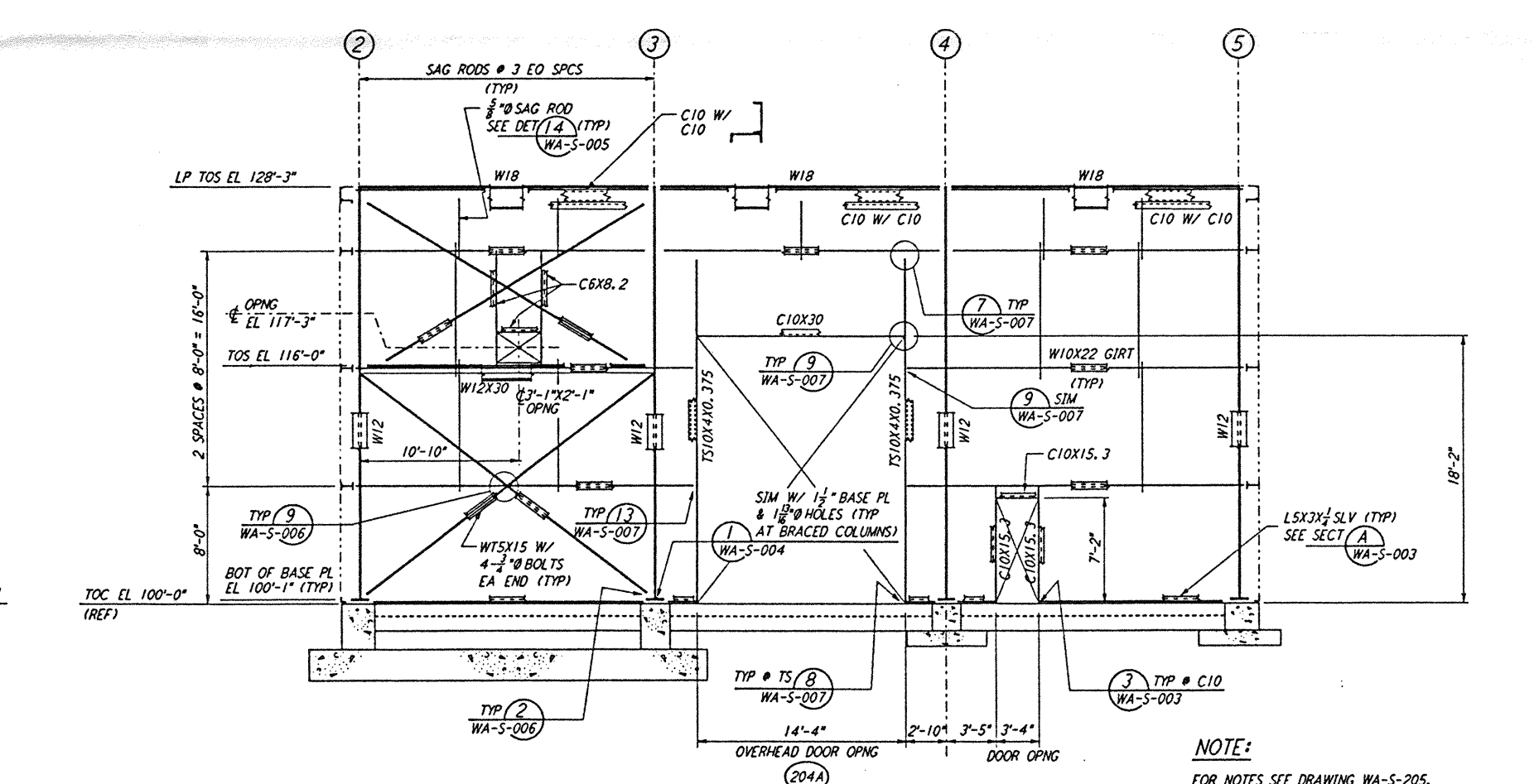
LOOKING NORTH - FOR END STATION "B" & MID STATION "B" ON ARM 1 (SOUTHWEST ARM)
 LOOKING EAST - FOR END STATION "A" & MID STATION "A" ON ARM 2 (NORTHWEST ARM)
 ELEVATION AT COLUMN LINE A
 $\frac{1}{4}'' = 1'-0''$



LOOKING SOUTH - FOR END STATION "B" & MID STATION "B" ON ARM 1 (SOUTHWEST ARM)
 LOOKING WEST - FOR END STATION "A" & MID STATION "A" ON ARM 2 (NORTHWEST ARM)
 ELEVATION AT COLUMN LINE C
 $\frac{1}{4}'' = 1'-0''$

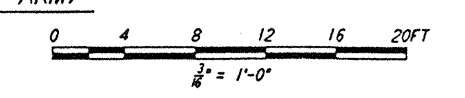


LOOKING SOUTH - FOR END STATION "B" & MID STATION "B" ON ARM 1 (SOUTHWEST ARM)
 LOOKING WEST - FOR END STATION "A" & MID STATION "A" ON ARM 2 (NORTHWEST ARM)
 ELEVATION AT COLUMN LINE B
 $\frac{1}{4}'' = 1'-0''$



LOOKING SOUTH - FOR END STATION "B" & MID STATION "B" ON ARM 1 (SOUTHWEST ARM)
 LOOKING WEST - FOR END STATION "A" & MID STATION "A" ON ARM 2 (NORTHWEST ARM)
 ELEVATION AT COLUMN LINE D
 $\frac{1}{4}'' = 1'-0''$

NOTE:
 FOR NOTES SEE DRAWING WA-S-205.



This document and the design it covers are the property of PARSONS. They are loaned only with the borrower's expressed written agreement that they will not be reproduced, copied, loaned, exhibited, or used in any other way, except by written consent from PARSONS, to the borrower.

NO.	DATE	BY	CHKD	ENGR	PROJ	DESCRIPTION
B	4-19-06	MCS				FINAL DESIGN REVIEW & BID
A	10-31-05					PRELIMINARY DESIGN REVIEW

DRAWN	MCS
CHECKED	
ENGINEER	
PROJ	