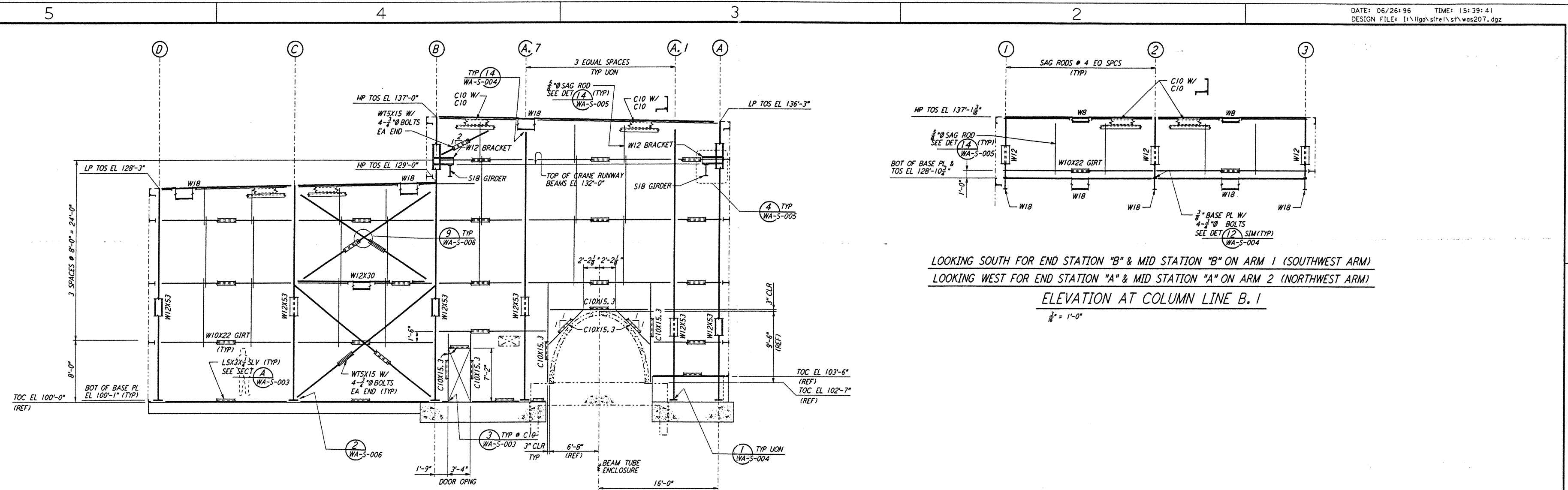


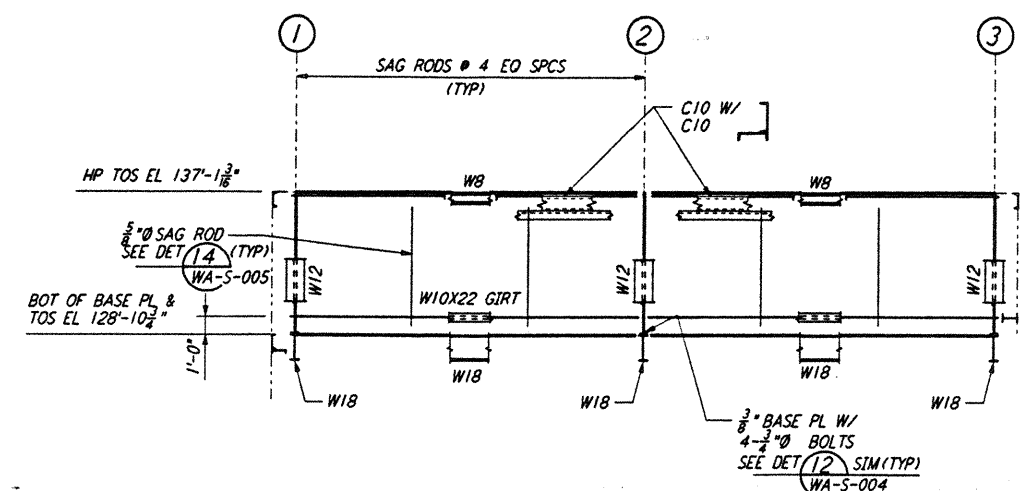
not be reproduced, copied, loaned, exhibited, or used in any other way, except by written consent from PARSONS to the borrower.

This document and the design it covers are the property of PARSONS. They are loaned only with the borrower's expressed written agreement that they will

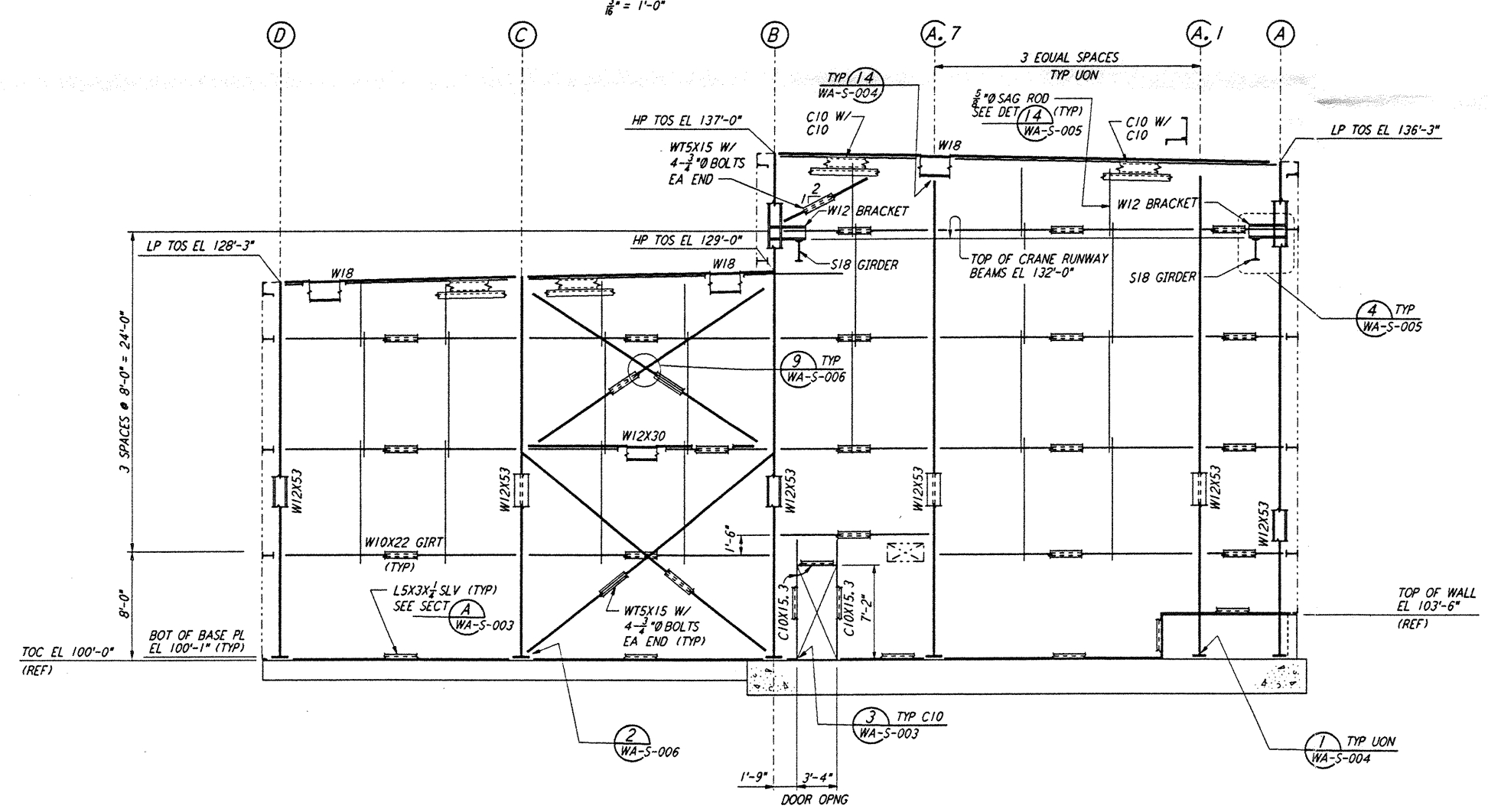
REG JUN 26 10:30AM 1996 3571085C - J:\STN\SUBELEMENTS\BRK\STN207\APP



LOOKING WEST FOR MID STATION "B" ON ARM 1 (SOUTHWEST ARM)  
 LOOKING SOUTH FOR MID STATION "A" ON ARM 2 (NORTHWEST ARM)  
 ELEVATION AT COLUMN LINE 5  
 $\frac{3}{8}'' = 1'-0''$

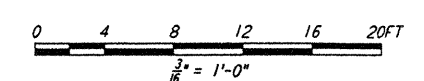


LOOKING SOUTH FOR END STATION "B" & MID STATION "B" ON ARM 1 (SOUTHWEST ARM)  
 LOOKING WEST FOR END STATION "A" & MID STATION "A" ON ARM 2 (NORTHWEST ARM)  
 ELEVATION AT COLUMN LINE B. 1  
 $\frac{3}{8}'' = 1'-0''$



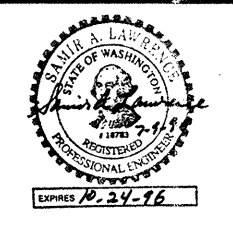
LOOKING WEST FOR END STATION "B" ON ARM 1 (SOUTHWEST ARM)  
 LOOKING SOUTH FOR END STATION "A" ON ARM 2 (NORTHWEST ARM)  
 ELEVATION AT COLUMN LINE 5  
 $\frac{3}{8}'' = 1'-0''$

NOTE:  
 FOR NOTES SEE DRAWING WA-S-205.



NO.	DATE	BY	CHKD	ENGR	PROJ	DESCRIPTION

ISSUED FOR CONSTRUCTION	
DRAWN	MCS 6-24-96
CHECKED	7-2-96
ENGINEER	6-28-96
PROJ	7/5/96



**PARSONS**  
 100 WEST WALNUT STREET  
 PASADENA, CALIFORNIA

**LIGO**  
 CALIFORNIA INSTITUTE OF TECHNOLOGY  
 MASSACHUSETTS INSTITUTE OF TECHNOLOGY

LASER INTERFEROMETER  
 GRAVITATIONAL-WAVE OBSERVATORY  
 SITE NO. 1 - HANFORD, WASHINGTON

TITLE	SCALE	CONTRACT NUMBER	PROJECT NUMBER
STRUCTURAL MID & END STATIONS FRAMING ELEVATIONS SHEET 3	AS NOTED	PP150969	8094
SHEET NUMBER	WA-S-207	REVISIONS	