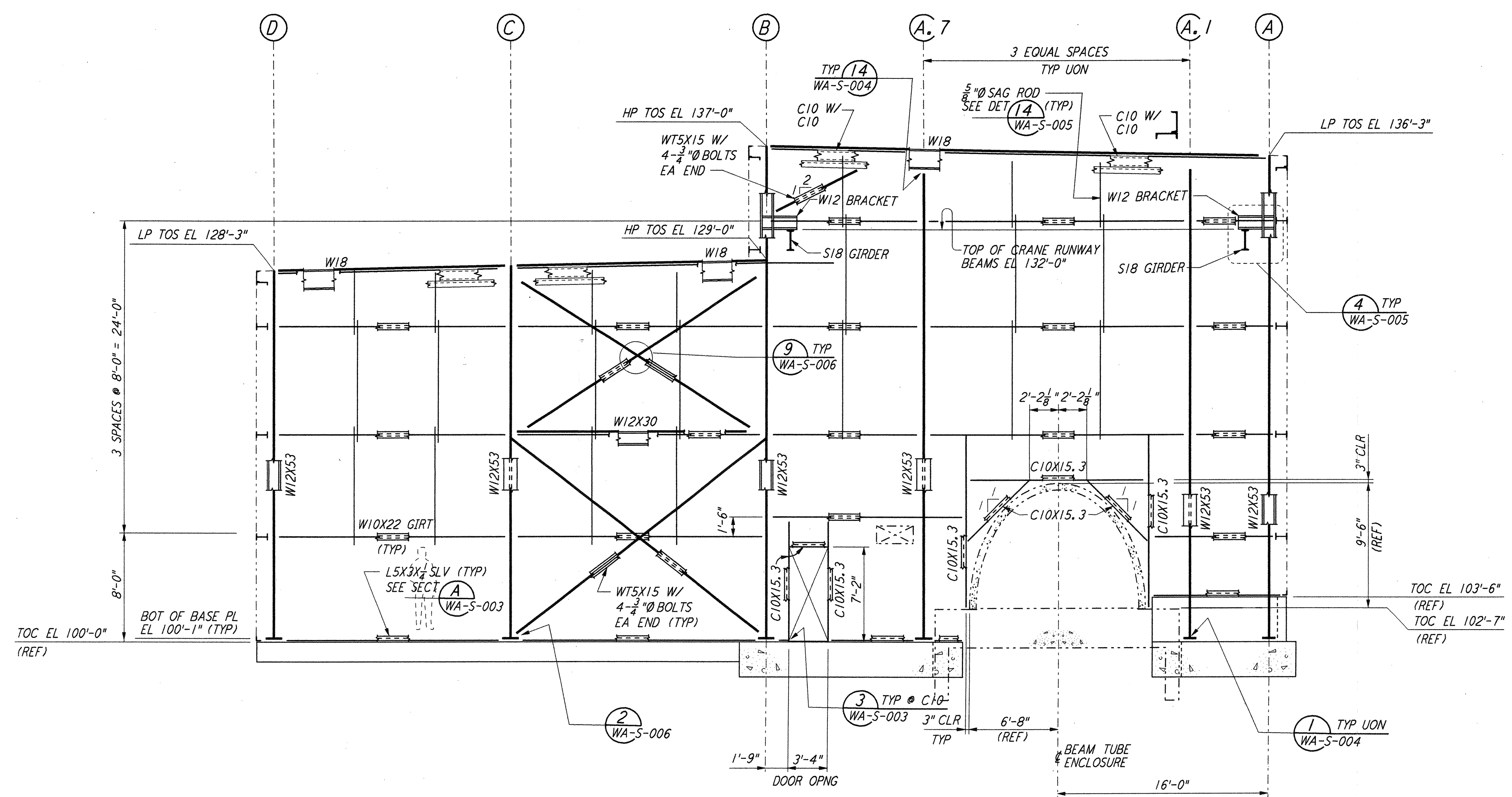
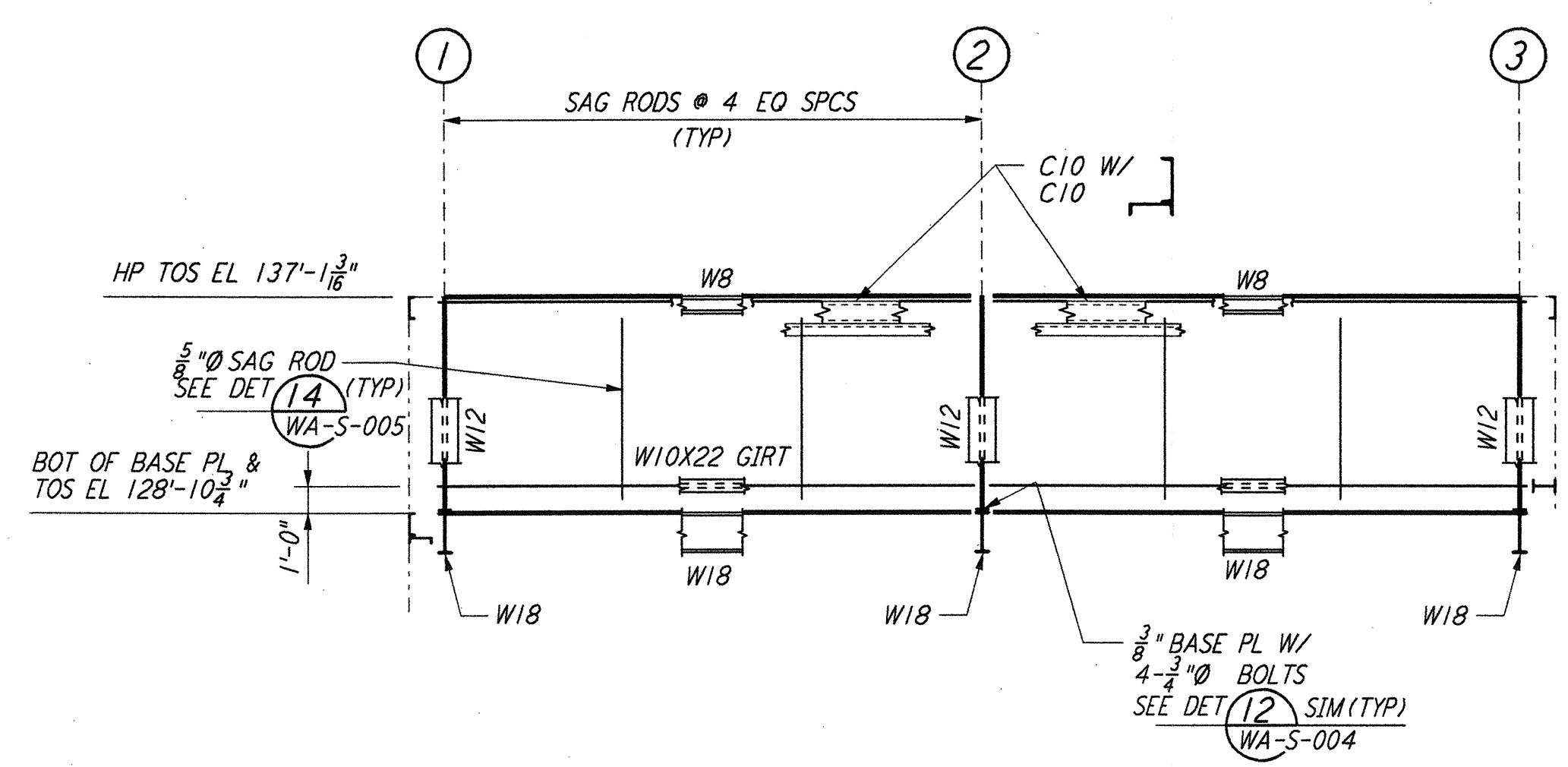


This document and the design it covers are the property of PARSONS. They are loaned only with the borrower's expressed written agreement that they will not be reproduced, copied, loaned, exhibited, or used in any other way, except by written consent from PARSONS to the borrower.

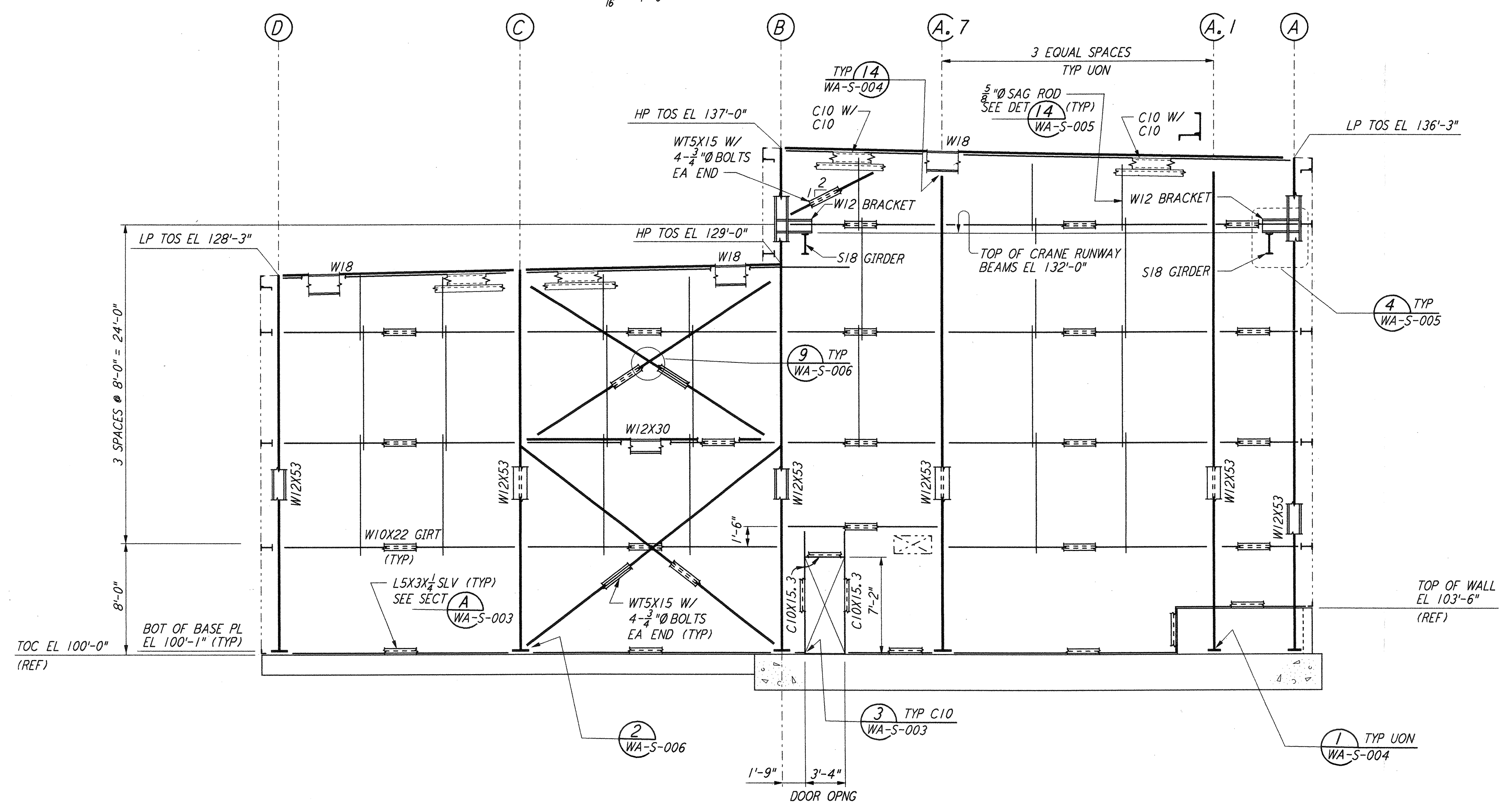
This document and the design it covers are the property of PARSONS. They are loaned only with the borrower's expressed written agreement that they will not be reproduced, copied, loaned, exhibited, or used in any other way, except by written consent from PARSONS to the borrower.



LOOKING WEST FOR MID STATION "B" ON ARM 1 (SOUTHWEST ARM)
 LOOKING SOUTH FOR MID STATION "A" ON ARM 2 (NORTHWEST ARM)
 ELEVATION AT COLUMN LINE 5
 $\frac{3}{16}'' = 1'-0''$

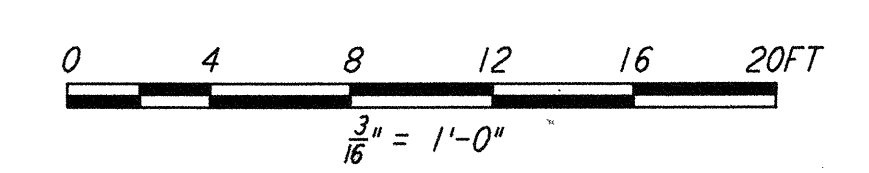


LOOKING SOUTH FOR END STATION "B" & MID STATION "B" ON ARM 1 (SOUTHWEST ARM)
 LOOKING WEST FOR END STATION "A" & MID STATION "A" ON ARM 2 (NORTHWEST ARM)
 ELEVATION AT COLUMN LINE B.1
 $\frac{3}{16}'' = 1'-0''$



LOOKING WEST FOR END STATION "B" ON ARM 1 (SOUTHWEST ARM)
 LOOKING SOUTH FOR END STATION "A" ON ARM 2 (NORTHWEST ARM)
 ELEVATION AT COLUMN LINE 5
 $\frac{3}{16}'' = 1'-0''$

NOTE:
 FOR NOTES SEE DRAWING WA-S-205.



LIGO-D960313-01-0

NO.	DATE	BY	CHKD	ENGR	PROJ	DESCRIPTION
1	6-15-98	CKT	BP	BP	MDW	ISSUED FOR AS-BUILT

ISSUED FOR CONSTRUCTION
 DRAWN MCS 6-24-96
 CHECKED DDM 7-2-96
 ENGINEER BP 6-28-96
 PROJ MDW 7-9-96
AS-BUILT DRAWINGS

PARSONS
 100 WEST WALNUT STREET
 PASADENA, CALIFORNIA

LIGO
 CALIFORNIA INSTITUTE OF TECHNOLOGY
 MASSACHUSETTS INSTITUTE OF TECHNOLOGY

LASER INTERFEROMETER GRAVITATIONAL-WAVE OBSERVATORY SITE NO. 1 - HANFORD, WASHINGTON			
TITLE	SCALE	CONTRACT NUMBER	PROJECT NUMBER
STRUCTURAL MID & END STATIONS FRAMING ELEVATIONS SHEET 3	AS NOTED	PP150969	8094
SHEET NUMBER			REVISIONS
WA-S-207			▲