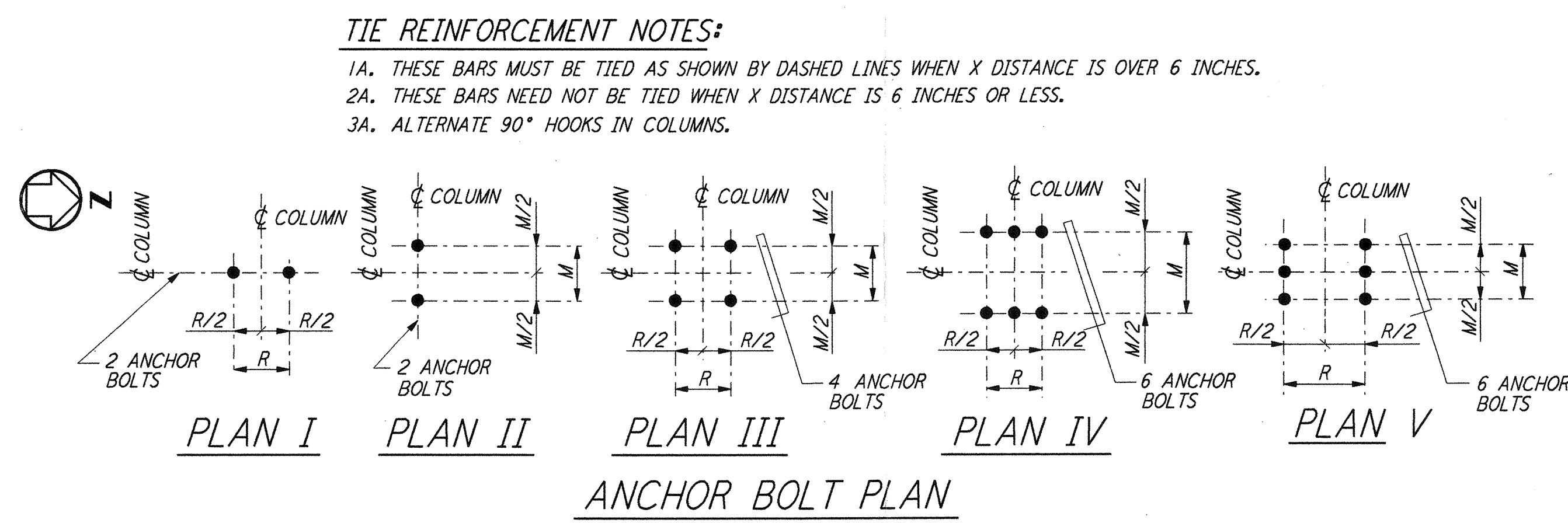
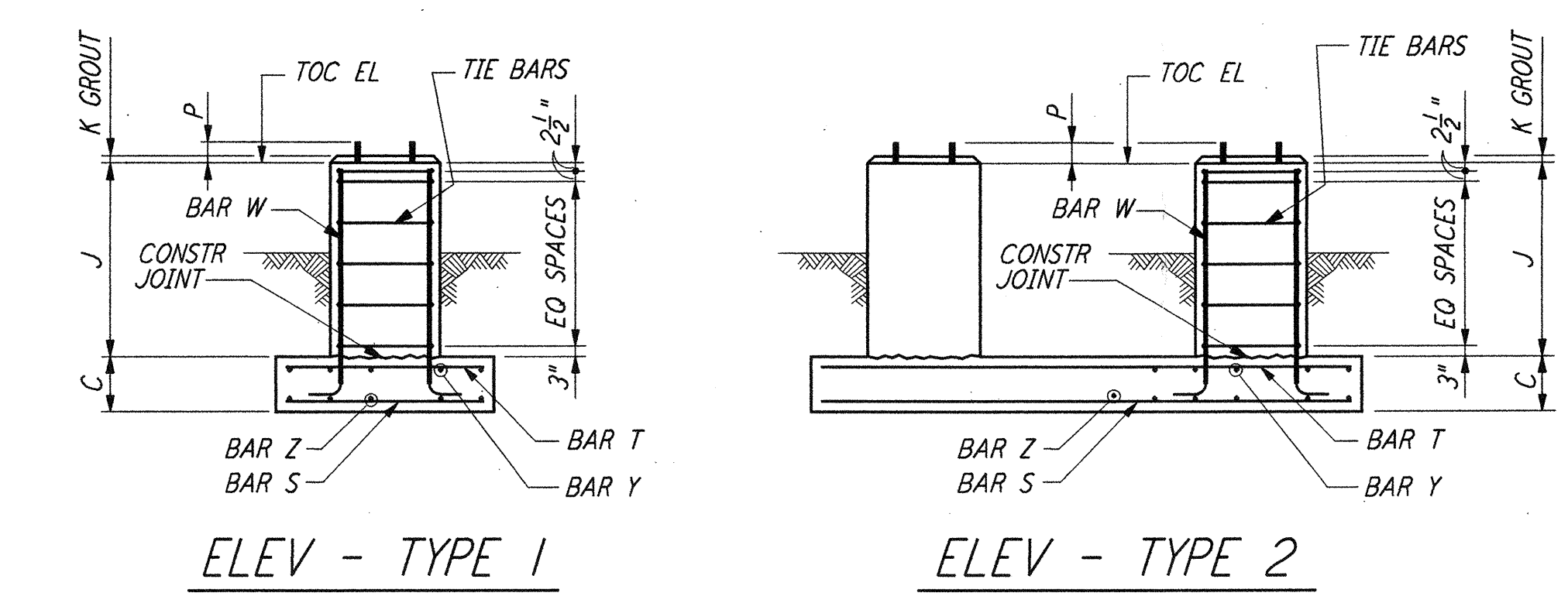
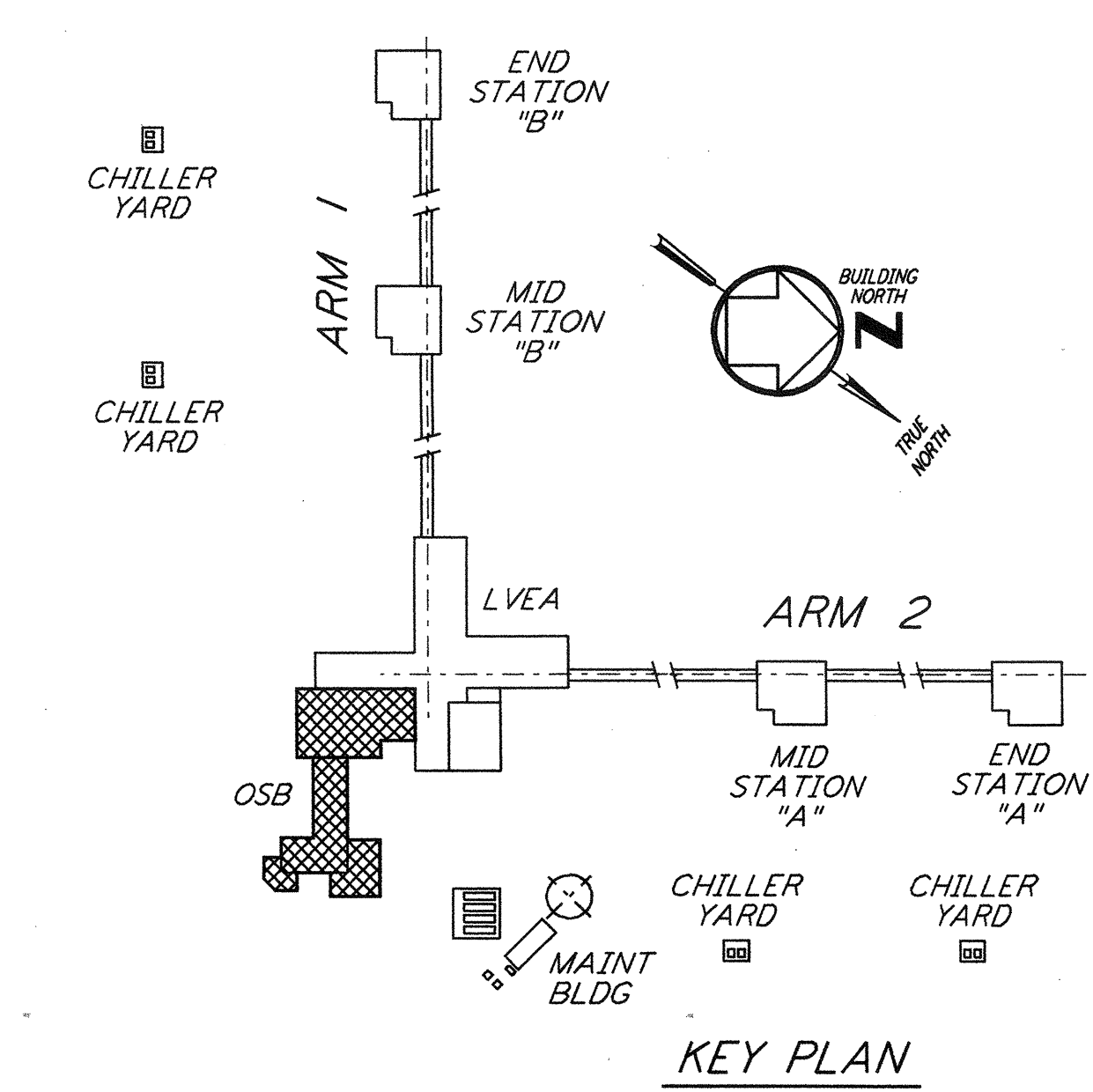


- NOTES:**
- CONSTRUCTION SHALL COMPLY WITH ALL THE REQUIREMENTS OF THE GENERAL NOTES ON DRAWING WA-S-001.
 - THE BAR SPACING IS BASED ON CENTER TO CENTER OF TIE SET.
 - FOR ANCHOR BOLT DETAILS SEE DRAWING WA-S-003.



FOUNDATION NO. OF PINS RECD	FOUNDATION LOCATION (COL LINES)	TOP OF CONC EL	FOUNDATION TYPE PLAN ELEV	DIMENSIONS												ANCHOR BOLTS PER PIER					REINFORCING PER FOUNDATION										CONC CY	FDN LOC PLAN	REMARKS				
				A	B	C	D	F	G	H	J	K	M	R	N	TYPE	NO PER PIER	SIZE Ø	L	P	BAR S NO SIZE	BAR Z NO SIZE	BAR T NO SIZE	BAR Y NO SIZE	BAR W NO SIZE	TIE BAR TYPE SIZE	NO RECD										
I	L. 3-16.3	100'-0"	A	I	4'-6"	4'-6"	1'-0"	10"	10"	10"	10"	2'-6"	1"	7"	7"	---	III	2	4	1"	1'-4"	4"	5	#5	5	#5	5	#5	5	#5	8	#6	B	#4	5	1.0	WA-S-102
I	L. 3-15.3	100'-0"	A	I	4'-6"	4'-6"	1'-0"	10"	10"	10"	10"	2'-6"	1"	7"	7"	---	III	2	4	1"	1'-4"	4"	5	#5	5	#5	5	#5	8	#6	B	#4	5	1.0	WA-S-102		
I	N. 3-15.3	100'-0"	A	I	4'-6"	4'-6"	1'-0"	10"	10"	10"	10"	2'-6"	1"	7"	7"	---	III	2	4	1"	1'-4"	4"	5	#5	5	#5	5	#5	8	#6	B	#4	5	1.0	WA-S-102		
I	V-15.3	100'-0"	A	I	4'-6"	4'-6"	1'-0"	10"	10"	10"	10"	1'-8"	1"	7"	7"	---	III	2	4	1"	1'-4"	4"	5	#5	5	#5	5	#5	8	#6	B	#4	4	1.0	WA-S-102		
I	J. 3-14.3	100'-0"	A	I	4'-0"	4'-8"	1'-0"	10"	10"	10"	10"	1'-8"	1"	7"	7"	---	III	2	4	1"	1'-4"	4"	5	#5	5	#5	5	#5	8	#6	B	#4	4	1.0	WA-S-102		
I	L. 3-14.3	100'-0"	A	I	4'-6"	4'-6"	1'-0"	10"	10"	10"	10"	1'-8"	1"	7"	7"	---	III	2	4	1"	1'-4"	4"	5	#5	5	#5	5	#5	8	#6	B	#4	4	1.0	WA-S-102		
I	J. 3-13.3	100'-0"	A	I	4'-0"	4'-8"	1'-0"	10"	10"	10"	10"	1'-8"	1"	7"	7"	---	III	2	4	1"	1'-4"	4"	5	#5	5	#5	5	#5	8	#6	B	#4	4	1.0	WA-S-102		
I	K. 3-13.3	100'-0"	A	I	4'-6"	4'-6"	1'-0"	10"	10"	10"	10"	1'-8"	1"	7"	7"	---	III	2	4	1"	1'-4"	4"	5	#5	5	#5	5	#5	8	#6	B	#4	4	1.0	WA-S-102		
I	L. 3-13.3	100'-0"	A	I	4'-6"	4'-6"	1'-0"	10"	10"	10"	10"	1'-8"	1"	7"	7"	---	III	2	4	1"	1'-4"	4"	5	#5	5	#5	5	#5	8	#6	B	#4	4	1.0	WA-S-102		
I	M. 3-13.3	100'-0"	A	I	4'-6"	4'-6"	1'-0"	10"	10"	10"	10"	1'-8"	1"	7"	7"	---	III	2	4	1"	1'-4"	4"	5	#5	5	#5	5	#5	8	#6	B	#4	4	1.0	WA-S-102		
I	L. 3-12.3	100'-0"	A	I	4'-6"	4'-6"	1'-0"	10"	10"	10"	10"	1'-8"	1"	7"	7"	---	III	2	4	1"	1'-4"	4"	5	#5	5	#5	5	#5	8	#6	B	#4	4	1.0	WA-S-102		
I	K. 3-11.3	100'-0"	A	I	4'-6"	4'-6"	1'-0"	10"	10"	10"	10"	1'-8"	1"	7"	7"	---	III	2	4	1"	1'-4"	4"	5	#5	5	#5	5	#5	8	#6	B	#4	4	1.0	WA-S-102		
I	L. 3-11.3	100'-0"	A	I	4'-6"	4'-6"	1'-0"	10"	10"	10"	10"	1'-8"	1"	7"	7"	---	III	2	4	1"	1'-4"	4"	5	#5	5	#5	5	#5	8	#6	B	#4	4	1.0	WA-S-102		
I	L. 3-17	100'-0"	A	I	5'-0"	5'-0"	1'-0"	10"	10"	10"	10"	2'-6"	1"	7"	7"	---	III	2	4	1"	1'-4"	4"	6	#5	6	#5	6	#5	8	#6	B	#4	5	1.2	WA-S-102		
I	M. 3-17	100'-0"	A	I	5'-0"	5'-0"	1'-0"	10"	10"	10"	10"	2'-6"	1"	7"	7"	---	III	2	4	1"	1'-4"	4"	6	#5	6	#5	6	#5	8	#6	B	#4	5	1.2	WA-S-102		
I	N. 3-17	100'-0"	A	I	5'-0"	5'-0"	1'-0"	10"	10"	10"	10"	1'-8"	1"	7"	7"	---	III	2	4	1"	1'-4"	4"	6	#5	6	#5	6	#5	8	#6	B	#4	4	1.2	WA-S-102		
I	N. 3-16.3	100'-0"	A	I	5'-0"	5'-0"	1'-0"	10"	10"	10"	10"	2'-6"	1"	7"	7"	---	III	2	4	1"	1'-4"	4"	6	#5	6	#5	6	#5	8	#6	B	#4	5	1.2	WA-S-102		
I	P. 3-16.3	100'-0"	A	I	5'-0"	5'-0"	1'-0"	10"	10"	10"	10"	1'-8"	1"	7"	7"	---	III	2	4	1"	1'-4"	4"	6	#5	6	#5	6	#5	8	#6	B	#4	4	1.2	WA-S-102		
I	R-16.3	100'-0"	A	I	5'-0"	5'-0"	1'-0"	10"	10"	10"	10"	1'-8"	1"	7"	7"	---	III	2	4	1"	1'-4"	4"	6	#5	6	#5	6	#5	8	#6	B	#4	4	1.2	WA-S-102		
I	S-16.3	100'-0"	A	I	5'-0"	5'-0"	1'-0"	10"	10"	10"	10"	1'-8"	1"	7"	7"	---	III	2	4	1"	1'-4"	4"	6	#5	6	#5	6	#5	8	#6	B	#4	4	1.2	WA-S-102		
I	W-16.3	100'-0"	A	I	5'-0"	5'-0"	1'-0"	10"	10"	10"	10"	1'-8"	1"	7"	7"	---	III	2	4	1"	1'-4"	4"	6	#5	6	#5	6	#5	8	#6	B	#4	4	1.2	WA-S-102		
I	R-14.3	100'-0"	A	I	5'-0"	5'-0"	1'-0"	10"	10"	10"	10"	1'-8"	1"	7"	7"	---	III	2	4	1"	1'-4"	4"	6	#5	6	#5	6	#5	8	#6	B	#4	4	1.2	WA-S-102		
I	S-14.3	100'-0"	A	I	5'-0"	5'-0"	1'-0"	10"	10"	10"	10"	1'-8"	1"	7"	7"	---	III	2	4	1"	1'-4"	4"	6	#5	6	#5	6	#5	8	#6	B	#4	4	1.2	WA-S-102		
I	T-14.3	100'-0"	A	I	5'-0"	5'-0"	1'-0"	10"	10"	10"	10"	1'-8"	1"	7"	7"	---	III	2	4	1"	1'-4"	4"	6	#5	6	#5	6	#5	8	#6	B	#4	4	1.2	WA-S-102		
I	U-14.3	100'-0"	A	I	5'-0"	5'-0"	1'-0"	10"	10"	10"	10"	1'-8"	1"	7"	7"	---	III	2	4	1"	1'-4"	4"	6	#5	6	#5	6	#5	8	#6	B	#4	4	1.2	WA-S-102		
I	V-14.3	100'-0"	A	I	5'-0"	5'-0"	1'-0"	10"	10"	10"	10"	1'-8"	1"	7"	7"	---	III	2	4	1"	1'-4"	4"	6	#5	6	#5	6	#5	8	#6	B	#4	4	1.2	WA-S-102		
I	M. 3-12.3	100'-0"	A	I	5'-0"	5'-0"	1'-0"	10"	10"	10"	10"	1'-8"	1"	7"	7"	---	III	2	4	1"	1'-4"	4"	6	#5	6	#5	6	#5	8	#6	B	#4	4	1.2	WA-S-102		
I	N. 3-12.3	100'-0"	A	I	5'-0"	5'-0"	1'-0"	10"	10"	10"	10"	1'-8"	1"	7"	7"	---	III	2	4	1"	1'-4"	4"	6	#5	6	#5	6	#5	8	#6	B	#4	4	1.2	WA-S-102		
I	M. 6-10.3	100'-0"	A	I	3'-0"	3'-0"	1'-0"	10"	10"	10"	10"	1'-8"	1"	1'-0"	1'-0"	---	III	2	4	1"	1'-4"	4"	4	#5	4	#5	-	-	-	8	#6	B	#4	4	0.5	WA-S-102	
I	M. 6-11.3	100'-0"	A	I	3'-0"	3'-0"	1'-0"	10"	10"	10"	10"	1'-8"	1"	1'-0"	1'-0"	---	III	2	4	1"	1'-4"	4"	4	#5	4	#5	-	-	-	8	#6	B	#4	4	0.5	WA-S-102	
I	V. 1-18.4	100'-0"	A	I	---	---	---	10"	10"	10"	10"	1'-8"	1"	8"	1'-0"	---	III	2	4	1"	1'-4"	4"	-	-	-	-	-	-	8	#6	B	#4	4	0.5	WA-S-102		
I	W-18.4	100'-0"	A	I	3'-0"	3'-0"	1'-0"	10"	10"	10"	10"	1'-8"	1"	5"	5"	---	III	2	4	1"	1'-4"	4"	4	#5	4	#5	-	-	-	8	#6	B	#4	4	0.5	WA-S-102	
I	W. 4-17.1	100'-0"	A	I	---	---	---	10"	10"	10"	10"	1'-8"	1"	1'-0"	8"	---	III	2	4	1"	1'-4"	4"	-	-	-	-	-	-	8	#6	B	#4	4	0.5	WA-S-102		
I	W. 4-18	100'-0"	A	I	3'-0"	3'-0"	1'-0"	10"	10"	10"	10"	1'-8"	1"	5"	5"	---	III	2	4	1"	1'-4"	4"	4	#5	4	#5	-	-	-	8	#6	B	#4	4	0.5	WA-S-102	



This document and the design it covers are the property of PARSONS. They are loaned only with the borrower's expressed written agreement that they will not be reproduced, copied, loaned, exhibited, or used in any other way, except by written consent from PARSONS to the borrower.

NO.	DATE	BY	CHKD	ENGR	PROJ	DESCRIPTION
1	6-15-96	CKT	BP	MDW	MDW	ISSUED FOR AS-BUILT

ISSUED FOR CONSTRUCTION		
DRAWN	MCS	6-24-96
CHECKED	DDM	7-2-96
ENGINEER	BP	6-28-96
PROJ	MDW	7-9-96

AS-BUILT DRAWINGS

100 WEST WALNUT STREET
PASADENA, CALIFORNIA

CALIFORNIA INSTITUTE OF TECHNOLOGY
MASSACHUSETTS INSTITUTE OF TECHNOLOGY

LASER INTERFEROMETER
GRAVITATIONAL-WAVE OBSERVATORY
SITE NO. 1 - HANFORD, WASHINGTON

SCALE: NONE CONTRACT NUMBER: PP150969 PROJECT NUMBER: 8094

SHEET NUMBER: **WA-S-402**

I:\ligo\site\stn\was402.dwg
 52085 K:\V36B2\st402.dwg
 15:39:22 1998 C:\PLOT\NUE\33-V36B2.DWF 52085 K:\V36B2\st402.dwg