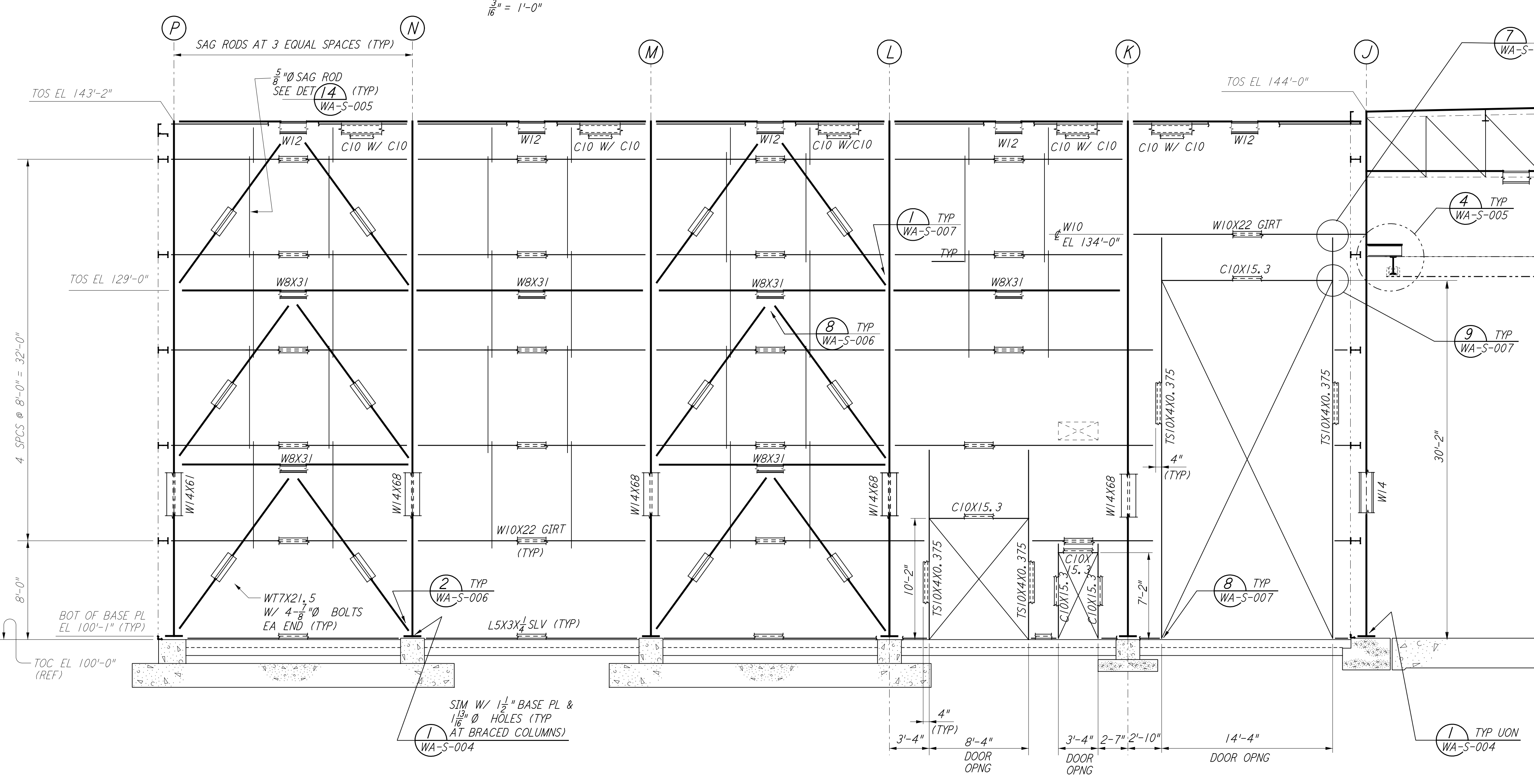
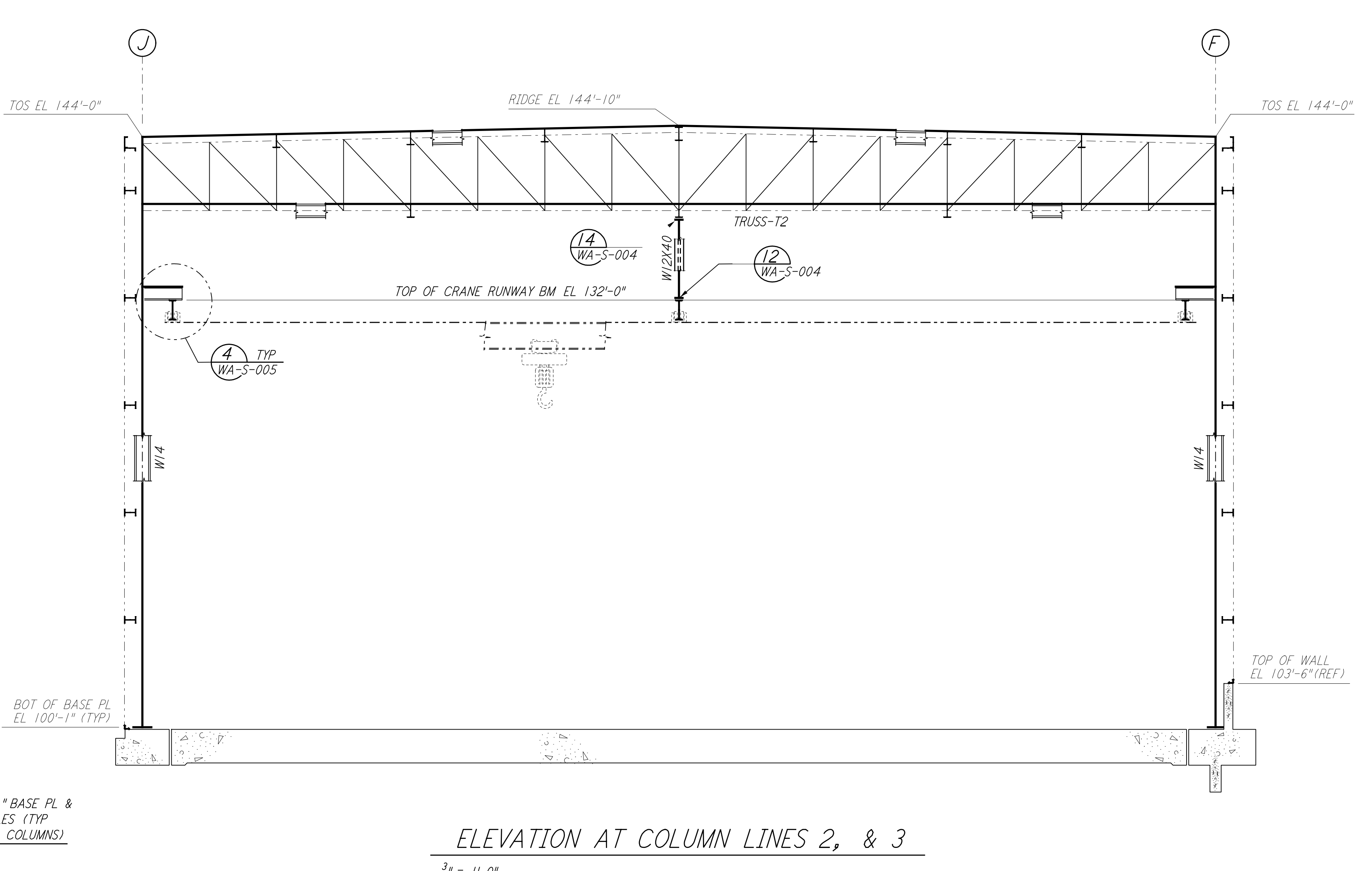
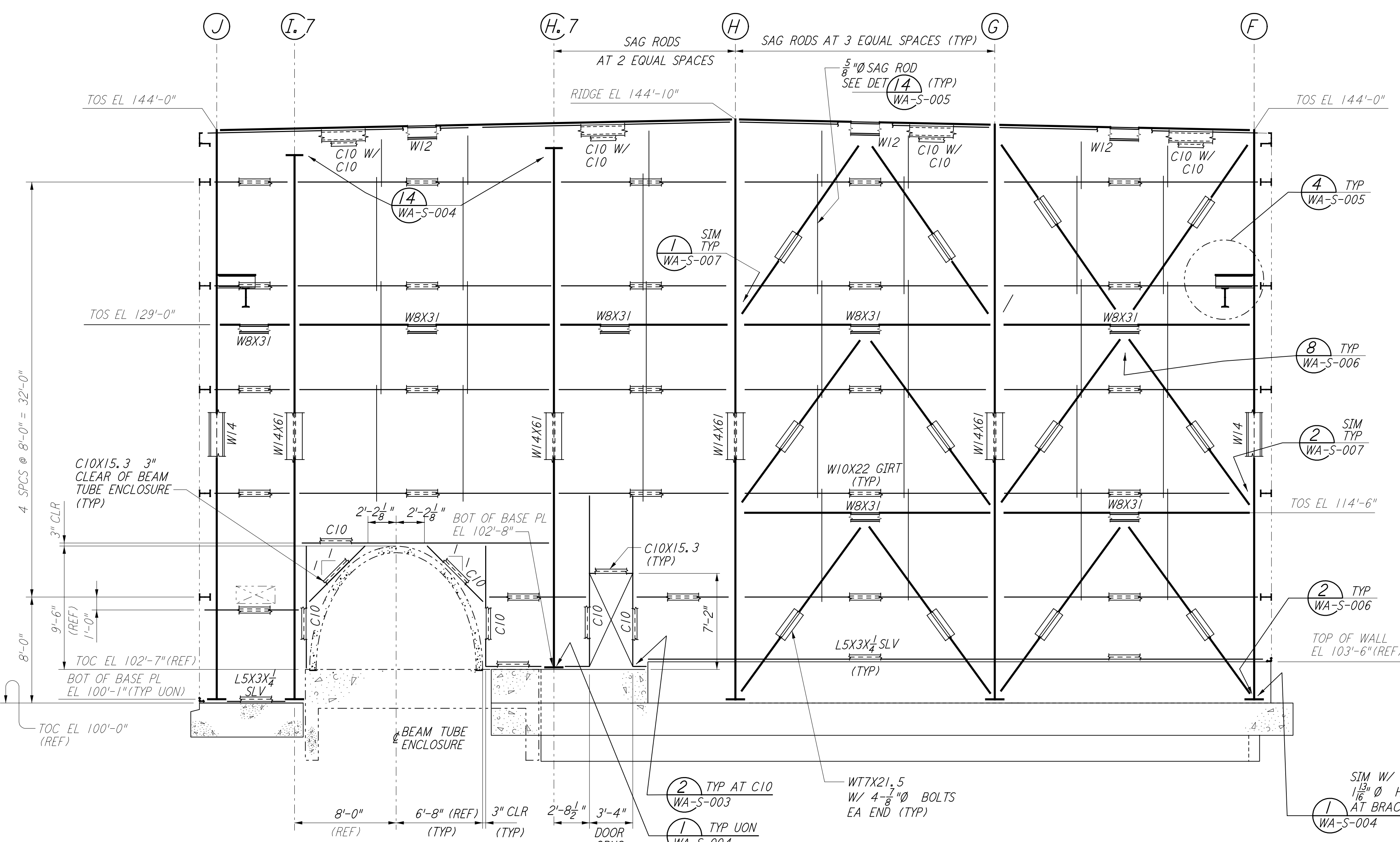
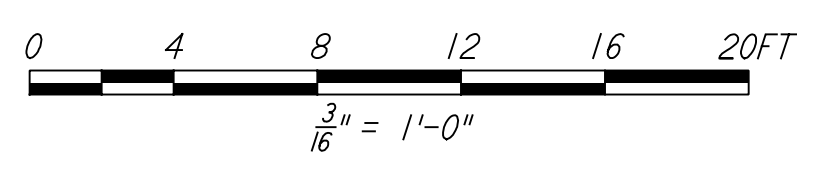


This document and the design it covers are the property of PARSONS. They are loaned only with the borrower's expressed written agreement that they will not be reproduced, copied, loaned, exhibited, or used in any other way, except by written consent from PARSONS to the borrower.



LIGO-D960328-01-O



- NOTES:**
- FOR GENERAL NOTES, ABBREVIATIONS AND SYMBOLS SEE DRAWING WA-S-001.
  - FOR CHANNEL, GIRT AND EAVE STRUT CONNECTION DETAILS SEE DRAWING WA-S-005.
  - FOR W BEAM TO COLUMN WEB/FLANGE CONNECTIONS, SEE DETAILS (3) & (4) TYPICAL UNLESS OTHERWISE NOTED.
  - FOR BASE ANGLE (LSX3) CONNECTIONS, SEE SECTION (A) WA-S-003.

NO.	DATE	BY	CHKD	ENGR	PROJ	DESCRIPTION
1	6-15-98	CKT				ISSUED FOR AS-BUILT

ISSUED FOR CONSTRUCTION	
DRAWN	MCS 6-24-96
CHECKED	DDM 7-2-96
ENGINEER	BP 6-28-96
PROJ	DWM 7-9-96
<b>AS-BUILT DRAWINGS</b>	



LASER INTERFEROMETER  
 GRAVITATIONAL-WAVE OBSERVATORY  
 SITE NO. I - HANFORD, WASHINGTON

TITLE	SCALE	PROJECT NUMBER
STRUCTURAL CORNER STATION LVEA FRAMING ELEVATIONS SHEET I	AS NOTED	PP150969 8094
SHEET NUMBER		REVISIONS
<b>WA-S-507</b>		