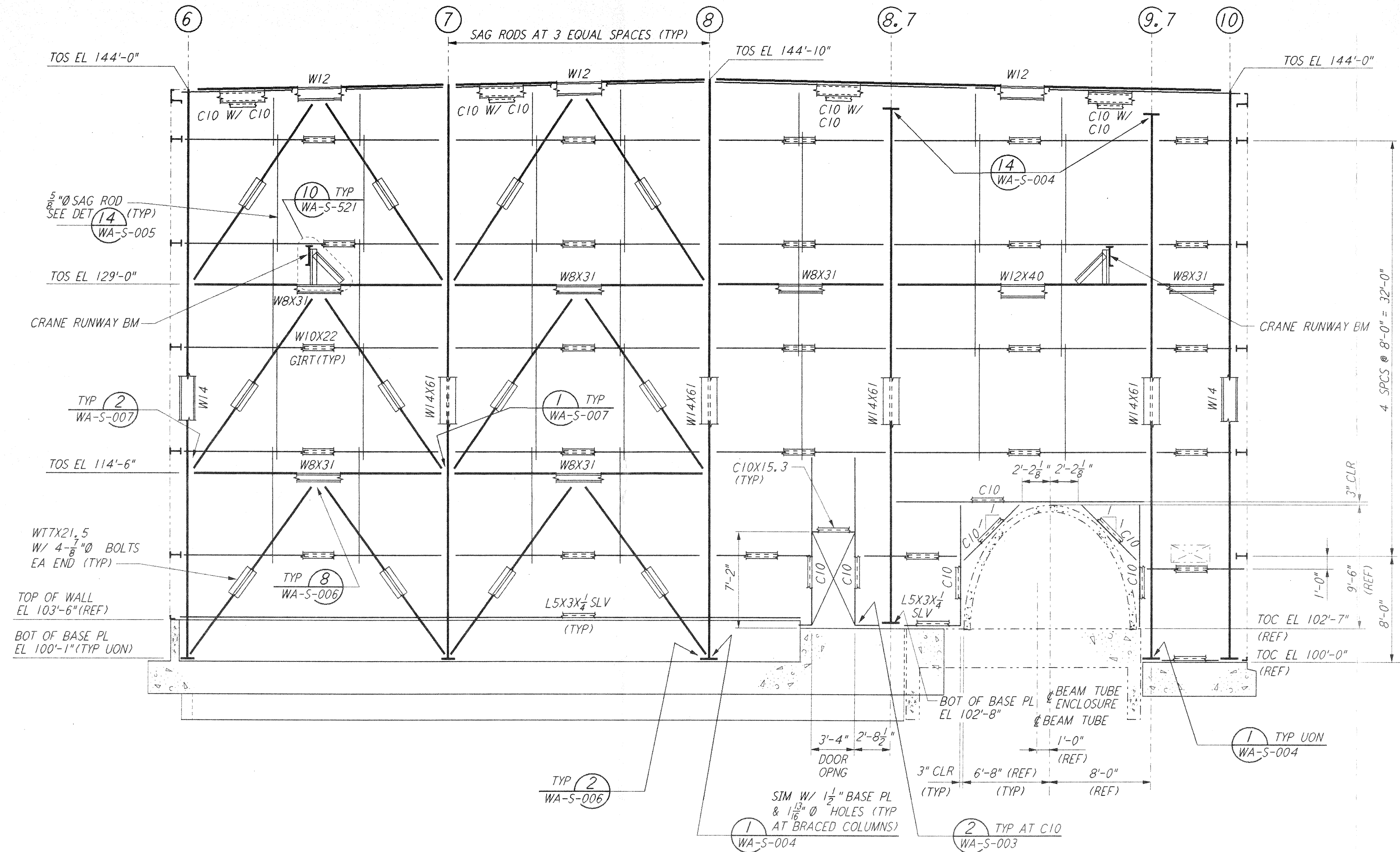
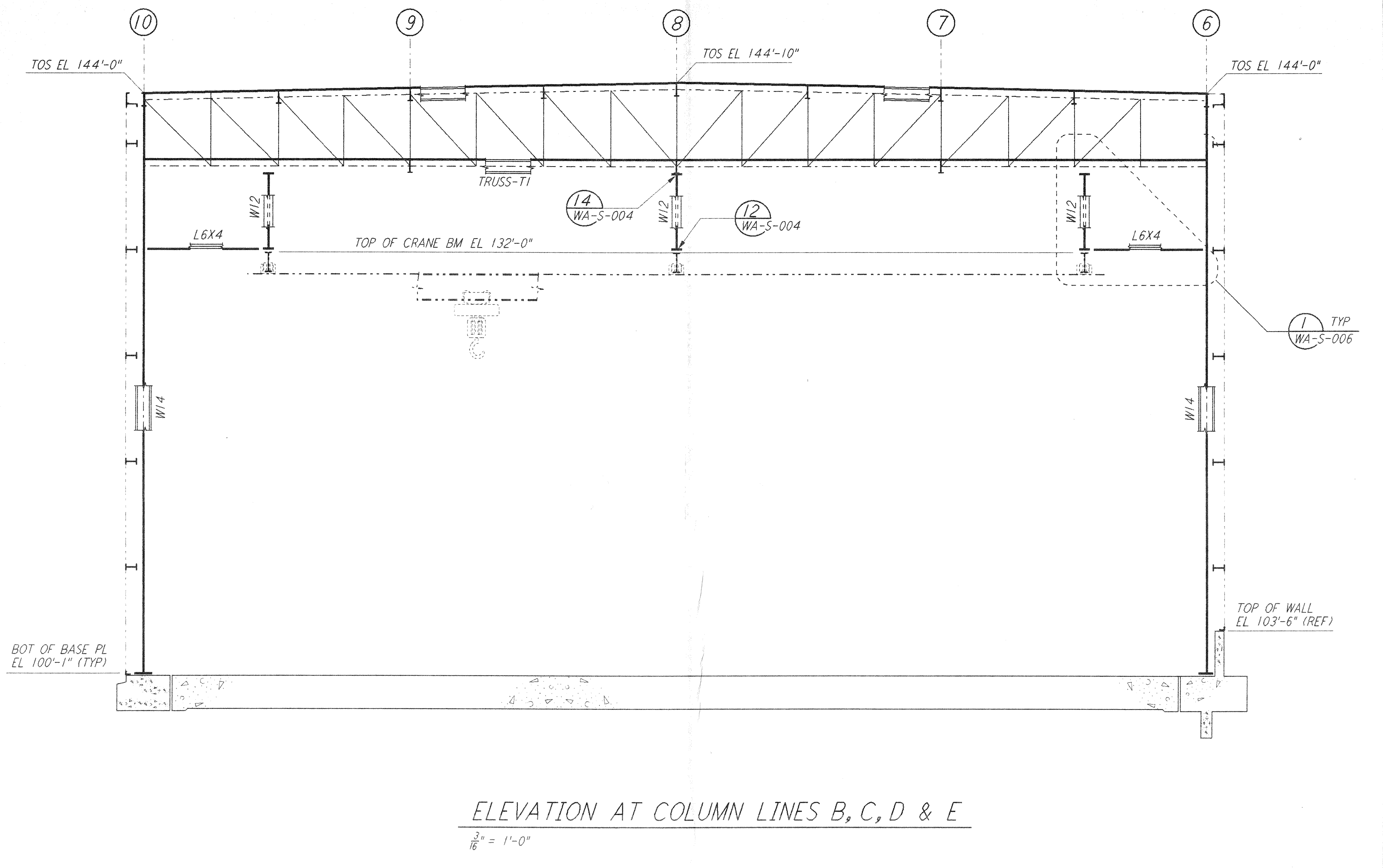


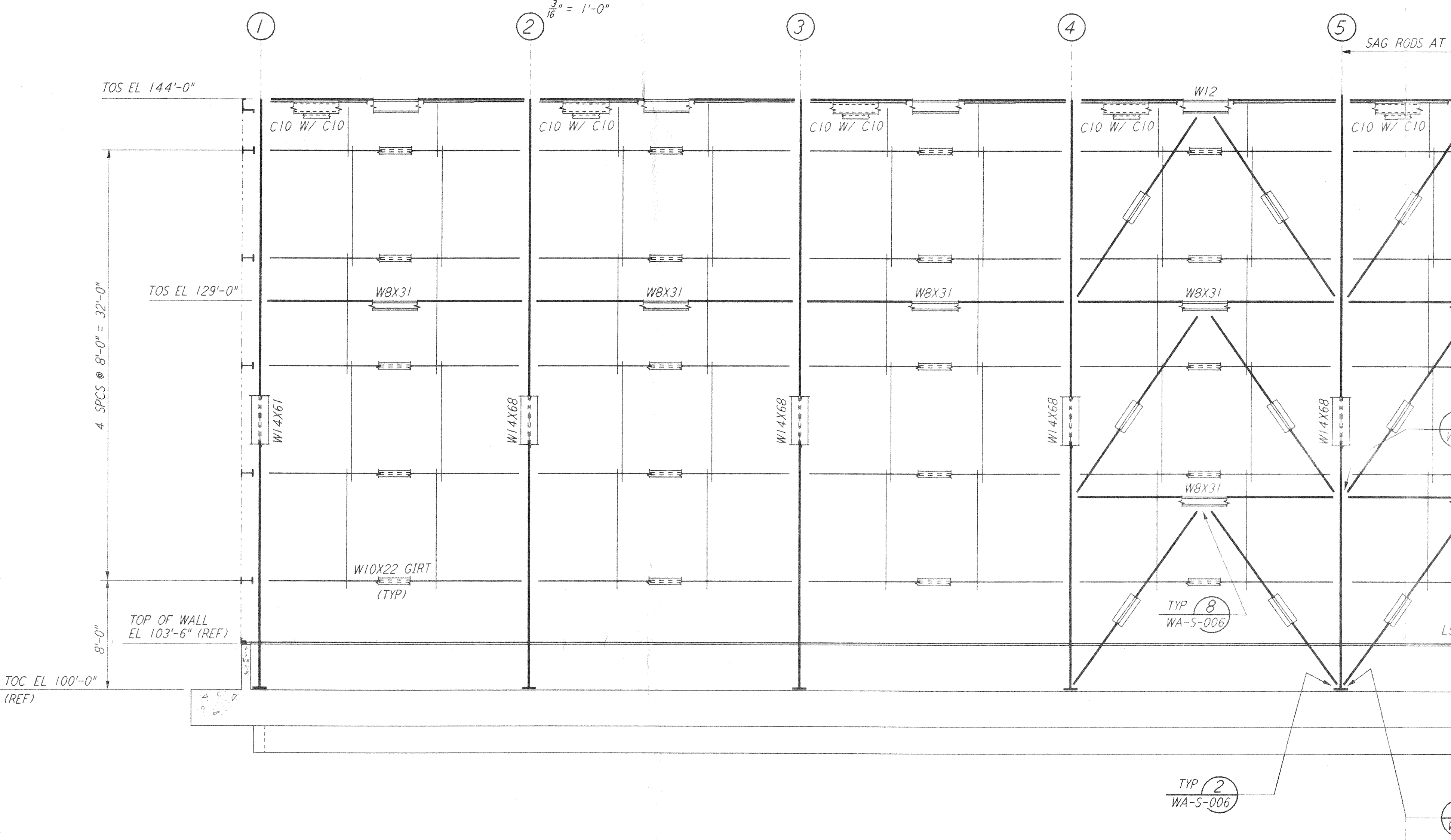
This document and the design it covers are the property of PARSONS. They are loaned only with the borrower's expressed written agreement that they will not be reproduced, copied, loaned, exhibited, or used in any other way, except by written consent from PARSONS to the borrower.



ELEVATION AT COLUMN LINE A
 $\frac{3}{8}'' = 1'-0''$

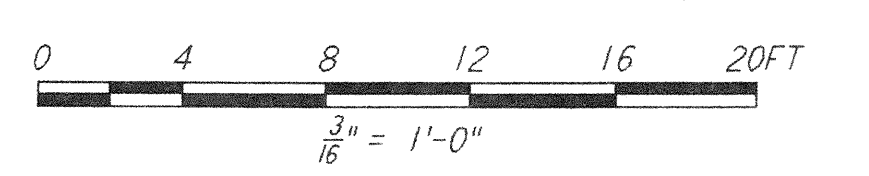


ELEVATION AT COLUMN LINES B, C, D & E
 $\frac{3}{8}'' = 1'-0''$



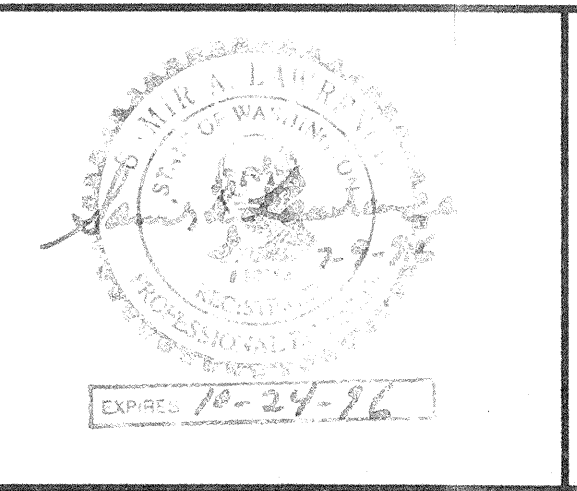
ELEVATION AT COLUMN LINE F
 $\frac{3}{8}'' = 1'-0''$

NOTE:
 1. FOR NOTES SEE DRAWING WA-S-507.



NO.	DATE	BY	CHKD	ENGR	PROJ	DESCRIPTION

ISSUED FOR CONSTRUCTION	MCS	6-24-96
DRAWN		
CHECKED		7-2-96
ENGINEER		6-29-96
PROJ		



PARSONS
 100 WEST WALNUT STREET
 PASADENA, CALIFORNIA

LIGO
 CALIFORNIA INSTITUTE OF TECHNOLOGY
 MASSACHUSETTS INSTITUTE OF TECHNOLOGY

LASER INTERFEROMETER
 GRAVITATIONAL-WAVE OBSERVATORY
 SITE NO. 1 - HANFORD, WASHINGTON

TITLE	SCALE	CONTRACT NUMBER	PROJECT NUMBER
STRUCTURAL CORNER STATION LVEA FRAMING ELEVATIONS SHEET 6	AS NOTED	PP150969	8094
SHEET NUMBER		REVISIONS	
WA-S-512			

LIGO-D960333-00-0 LIGOWAF.BDR