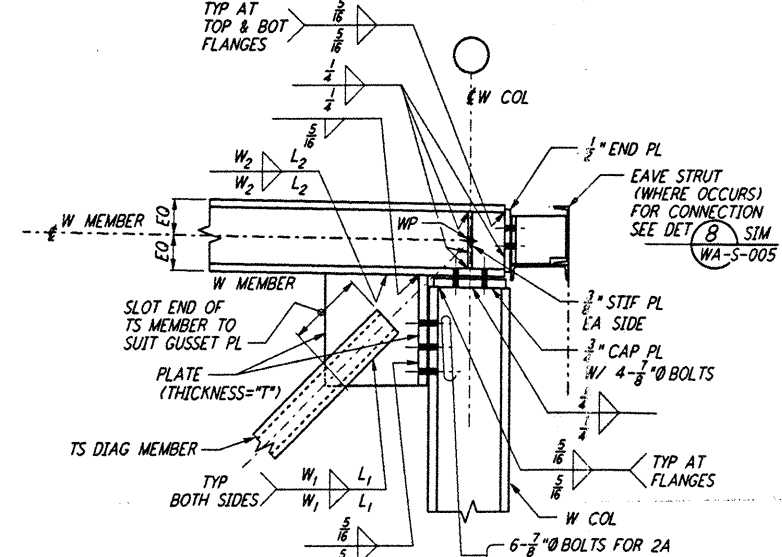


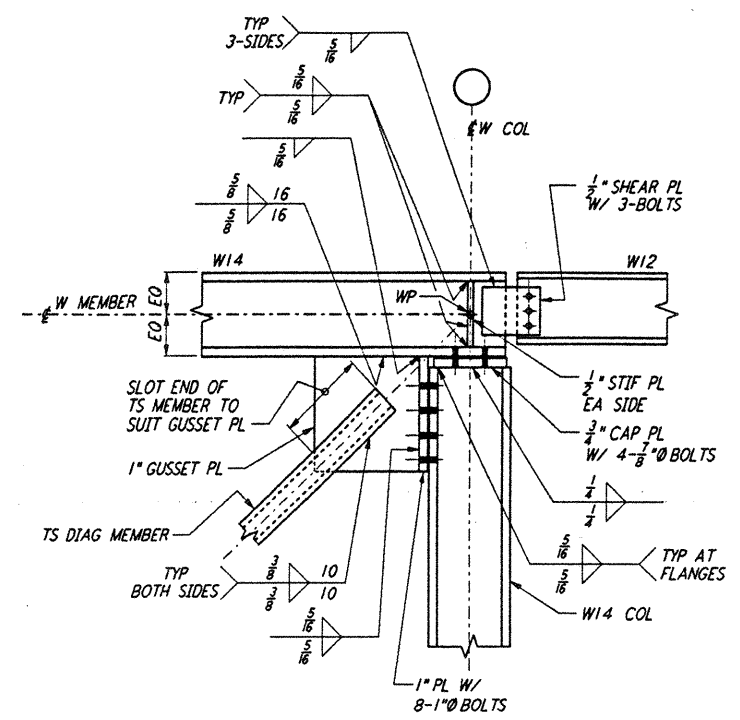
DETAIL NO.	PLATE THICKNESS "T"	WELD SIZE W <sub>1</sub>	WELD LENGTH L <sub>1</sub>	WELD SIZE W <sub>2</sub>	WELD LENGTH L <sub>2</sub>
1A	1/2"	1/4"	6"	1/4"	14"
1B	3/8"	3/8"	6"	3/8"	16"
1C	3/4"	3/8"	8"	3/8"	18"
1D	1"	3/8"	10"	3/4"	18"

DETAIL 1A 1B 1C 1D REF  
 NTS WA-S-521 WA-S-517 WA-S-518

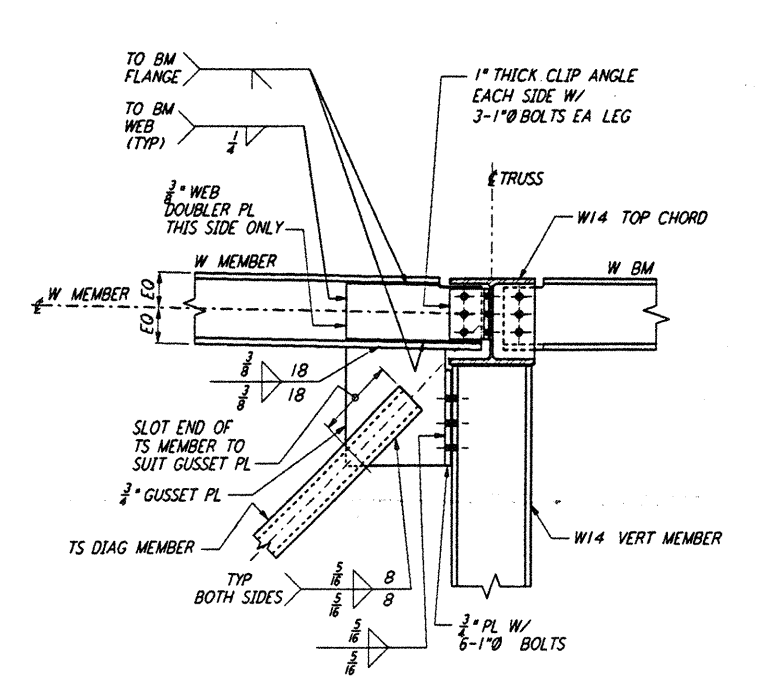


DETAIL NO.	PLATE THICKNESS "T"	WELD SIZE W <sub>1</sub>	WELD LENGTH L <sub>1</sub>	WELD SIZE W <sub>2</sub>	WELD LENGTH L <sub>2</sub>
2A	1/2"	1/4"	6"	1/4"	14"
2B	3/4"	3/8"	8"	3/4"	18"

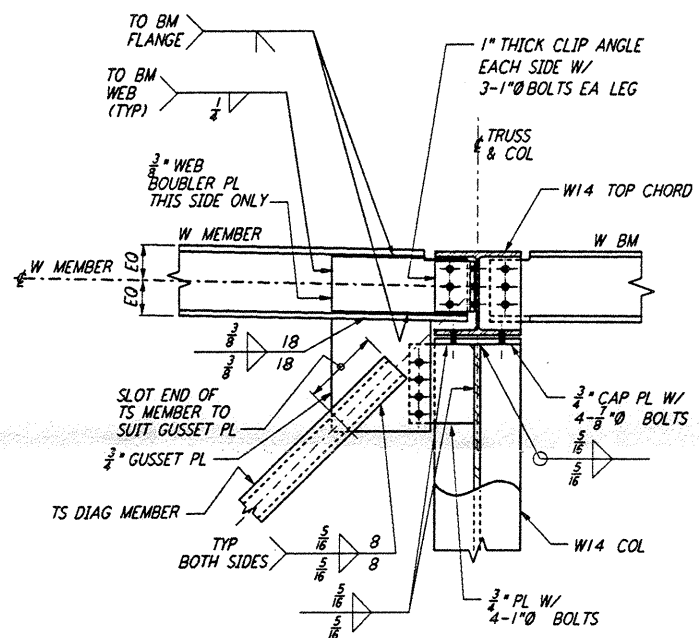
DETAIL 2A 2B REF  
 NTS WA-S-521 WA-S-517 WA-S-518



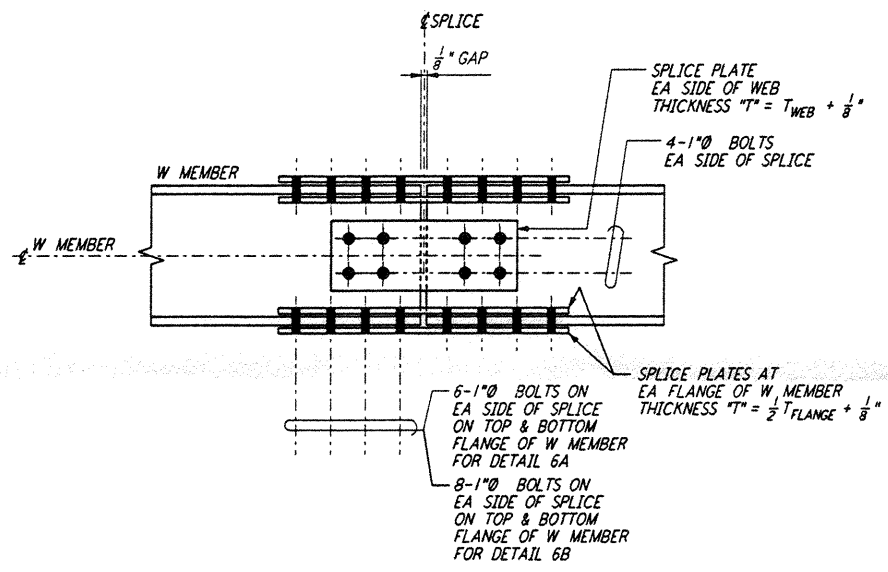
DETAIL 3 REF  
 NTS WA-S-521 WA-S-517



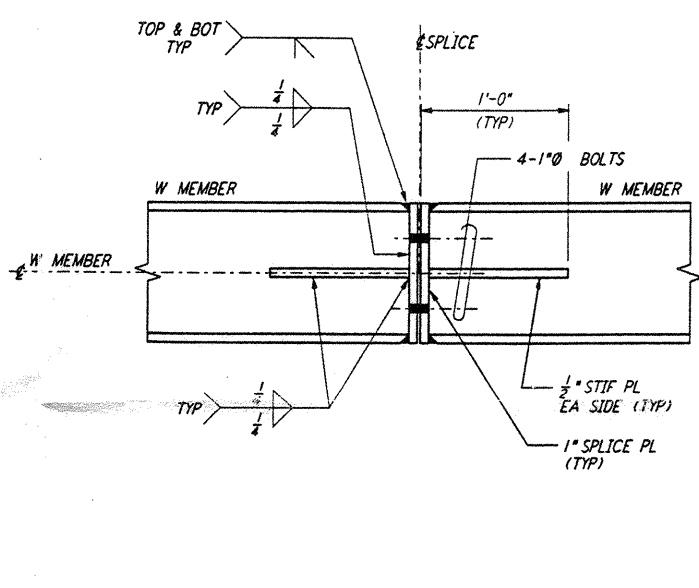
DETAIL 4 REF  
 NTS WA-S-521 WA-S-517



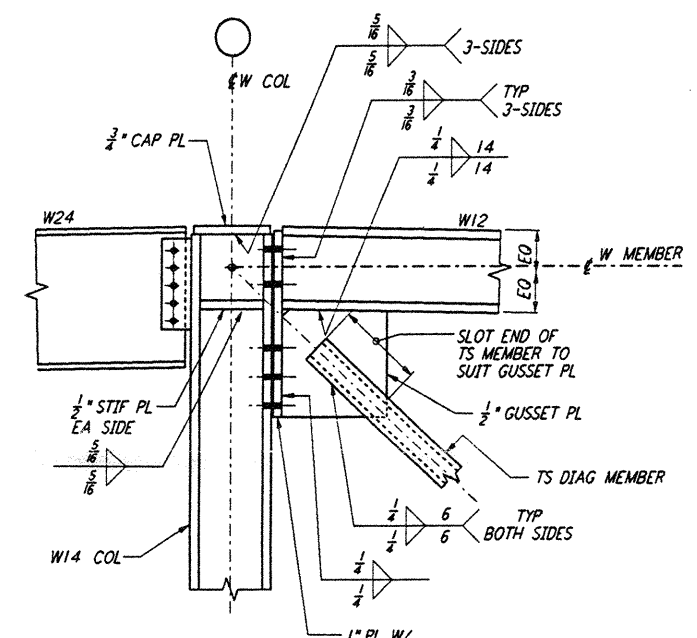
DETAIL 5 REF  
 NTS WA-S-521 WA-S-518



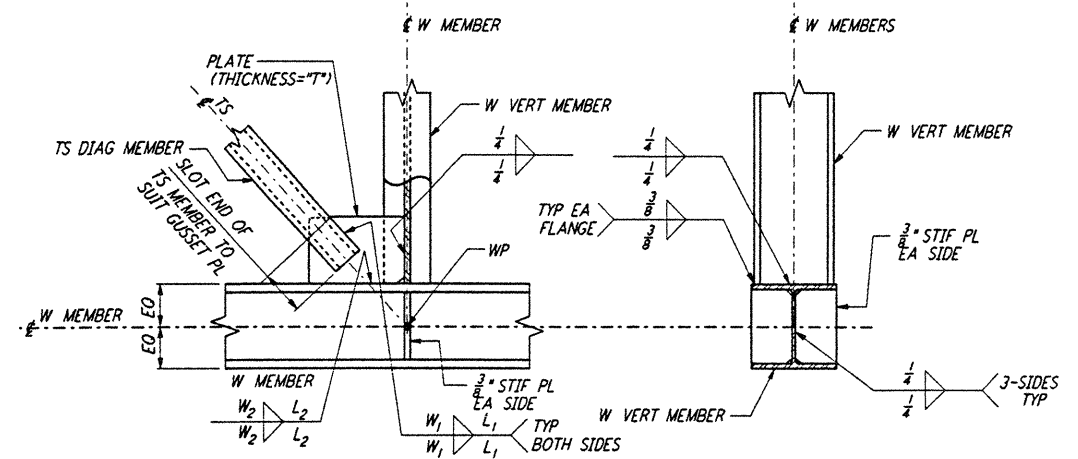
BOTTOM CHORD SPLICE  
 DETAIL 6A 6B REF  
 NTS WA-S-521 WA-S-517 WA-S-518



TOP CHORD SPLICE  
 DETAIL 7 REF  
 NTS WA-S-521 WA-S-517 WA-S-518

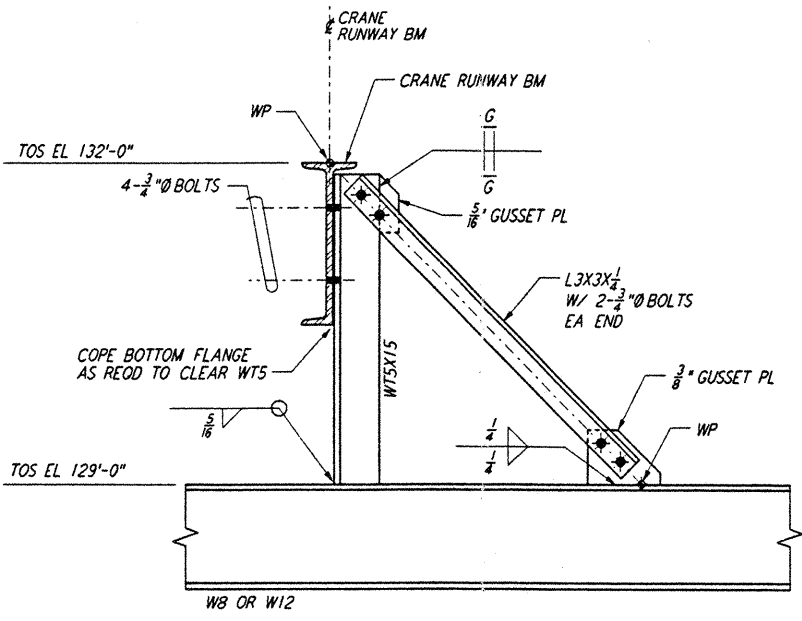


DETAIL 8 REF  
 NTS WA-S-521 WA-S-518

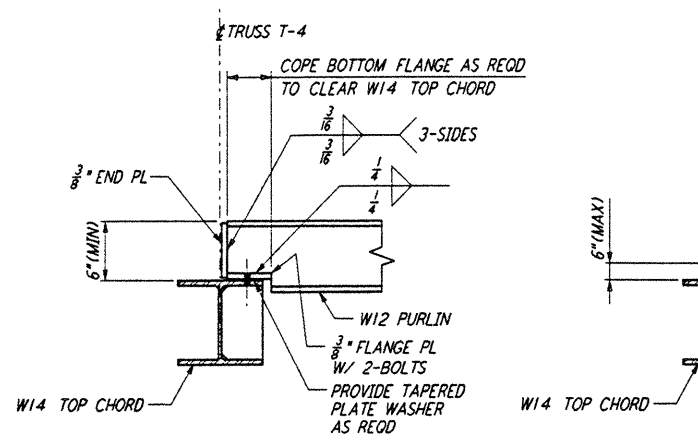


DETAIL NO.	PLATE THICKNESS "T"	WELD SIZE W <sub>1</sub>	WELD LENGTH L <sub>1</sub>	WELD SIZE W <sub>2</sub>	WELD LENGTH L <sub>2</sub>
9A	3/8"	3/8"	6"	3/8"	16"
9B	1"	3/8"	10"	3/4"	18"

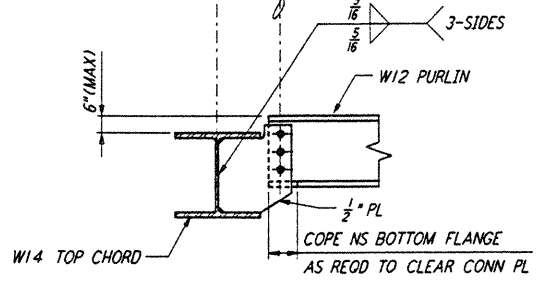
DETAIL 9A 9B REF  
 NTS WA-S-521 WA-S-517 WA-S-518



DETAIL 10 REF  
 NTS WA-S-521 WA-S-512



DETAIL 11 REF  
 NTS WA-S-521 WA-S-504



DETAIL 12 REF  
 NTS WA-S-521 WA-S-504

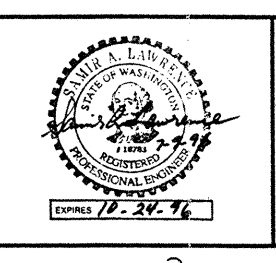
This document and the design it covers are the property of PARSONS. They are loaned only with the borrower's expressed written agreement that they will not be reproduced, copied, loaned, exhibited, or used in any other way, except by written consent from PARSONS to the borrower.

This document and the design it covers are the property of PARSONS. They are loaned only with the borrower's expressed written agreement that they will not be reproduced, copied, loaned, exhibited, or used in any other way, except by written consent from PARSONS to the borrower.

PARSONS  
 100 WEST WALNUT STREET  
 PASADENA, CALIFORNIA 91101

NO.	DATE	BY	CHKD	ENGR	PROJ	DESCRIPTION

ISSUED FOR CONSTRUCTION	DRAWN	MCS	6-24-96
CHECKED	7-2-96		
ENGINEER	7-2-96		
PROJ	7/19/96		



**PARSONS**  
 100 WEST WALNUT STREET  
 PASADENA, CALIFORNIA

**LIGO**  
 CALIFORNIA INSTITUTE OF TECHNOLOGY  
 MASSACHUSETTS INSTITUTE OF TECHNOLOGY

LASER INTERFEROMETER  
 GRAVITATIONAL-WAVE OBSERVATORY  
 SITE NO. 1 - HANFORD, WASHINGTON

TITLE	SCALE	CONTRACT NUMBER	PROJECT NUMBER
STRUCTURAL CORNER STATION LVEA STRUCTURAL STEEL SECTIONS AND DETAILS	NONE	PP150969	8094
DRAWING NO.	SHEET NUMBER	REVISION	

WA-S-521