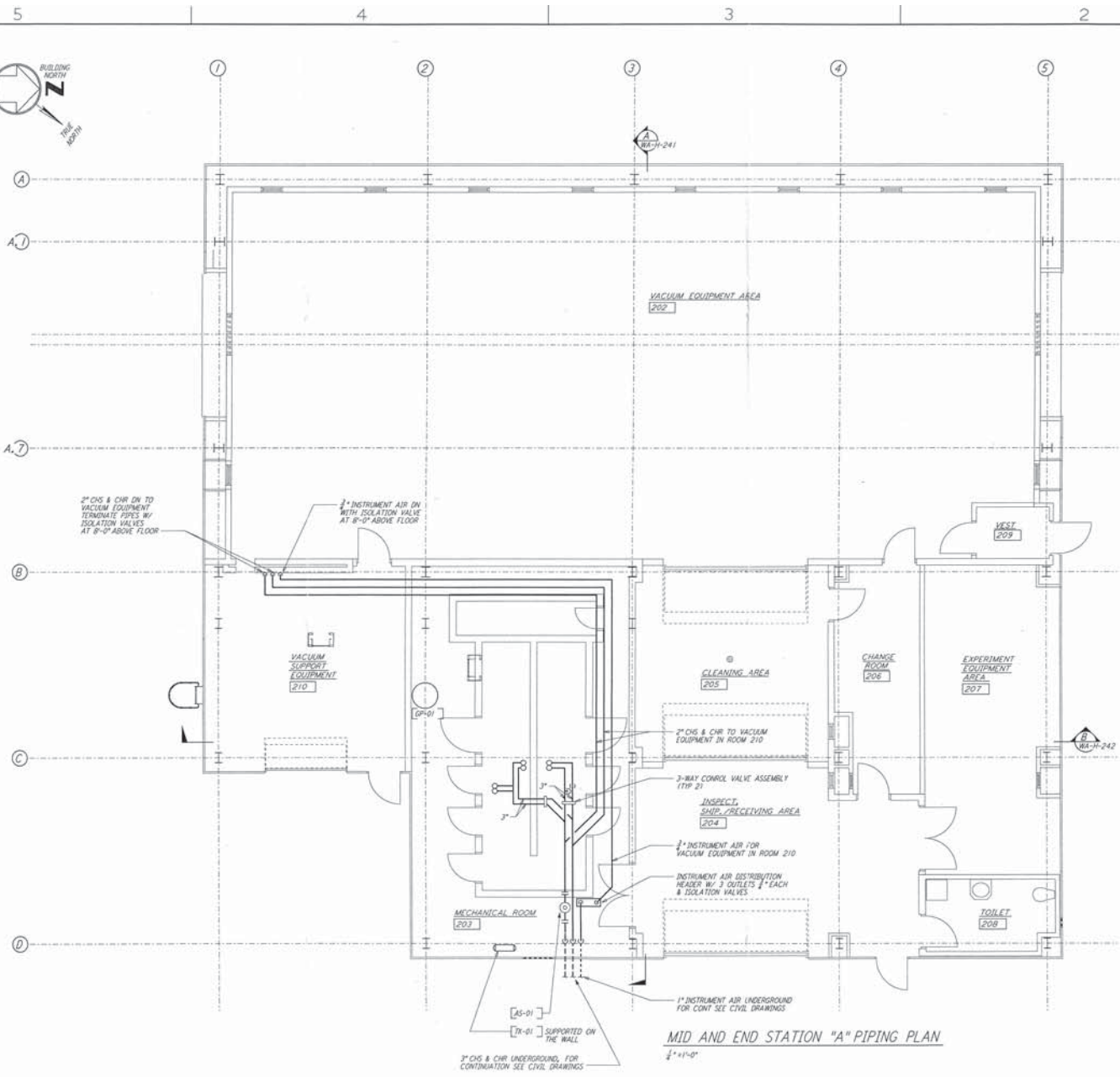
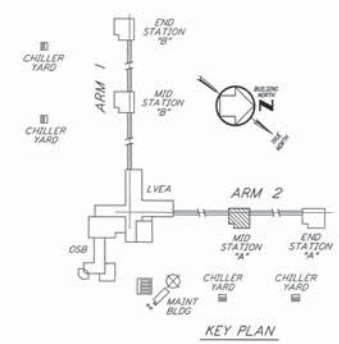


NOTES:  
 1. FOR LEGEND, ABBREVIATIONS AND GENERAL NOTES SEE SHEETS  
 WA-H-001 AND WA-H-002.



MID AND END STATION "A" PIPING PLAN  
 1/4" = 1'-0"



Drawn by	CLP	Checked by	CLP
Date	4/9/96	Date	4/9/96
Scale	1/4" = 1'-0"	Scale	1/4" = 1'-0"
Sheet Number	1	Sheet Number	1
Date	4/9/96	Date	4/9/96

This document and the design it covers are the property of PARSONS and shall remain the property of PARSONS. It shall not be reproduced, copied, loaned, exhibited, or used in any way without the written consent of PARSONS to the borrower.

NO.	DATE	BY	CHKD	ENGR	PROJ	DESCRIPTION
A	4-19-96	CLP	MAC	RA	RA	FINAL DESIGN REVIEW & BID

**PARSONS**  
 100 WEST WALNUT STREET  
 PASADENA, CALIFORNIA

**LIGO**  
 CALIFORNIA INSTITUTE OF TECHNOLOGY  
 MASSACHUSETTS INSTITUTE OF TECHNOLOGY

LASER INTERFEROMETER  
 GRAVITATIONAL-WAVE OBSERVATORY  
 SITE NO. 1 - HANFORD, WASHINGTON

HVAC  
 MID & END STATIONS "A"  
 PIPING PLAN

AS NOTED PPI50969 B094  
**WA-H-215**