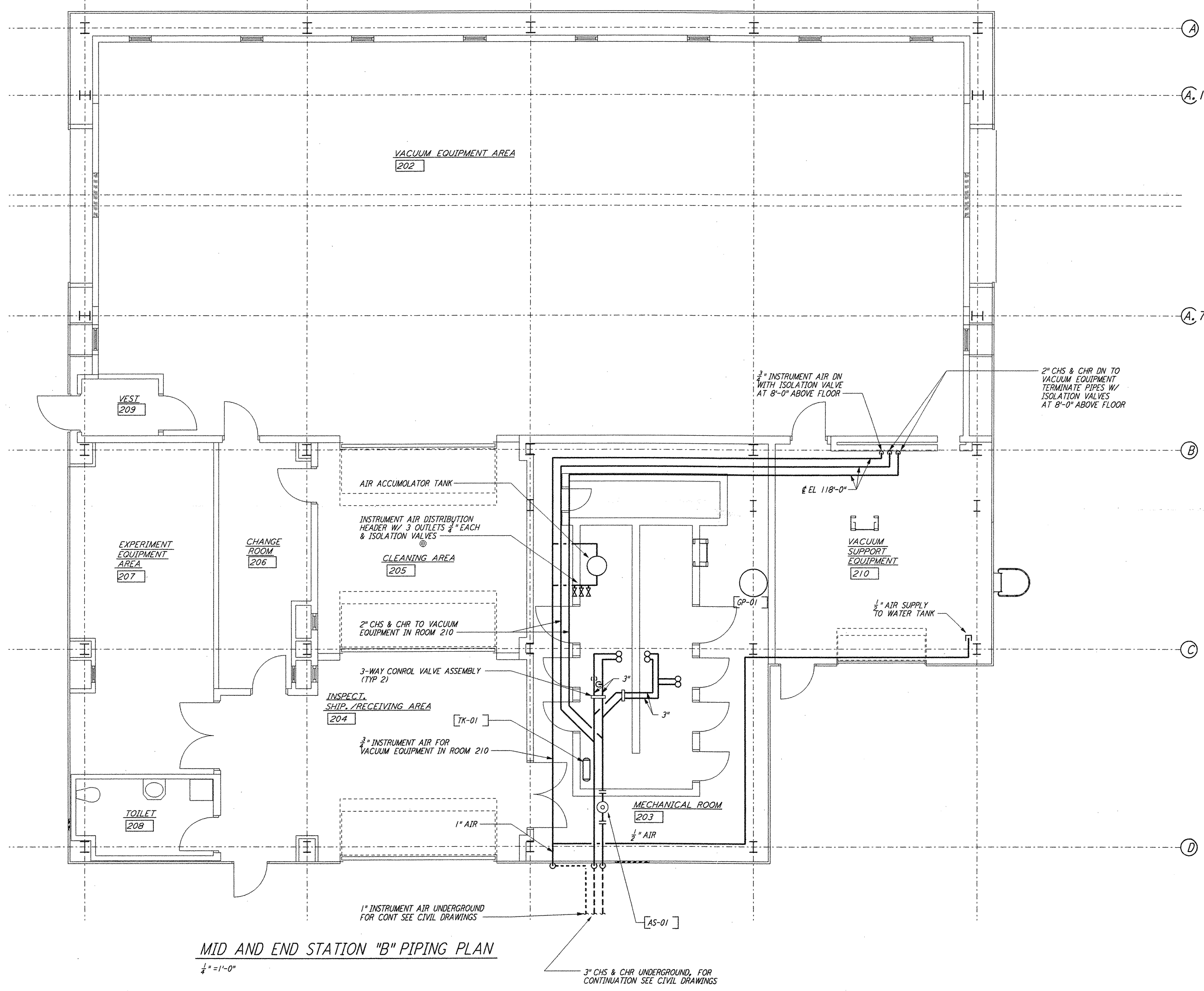
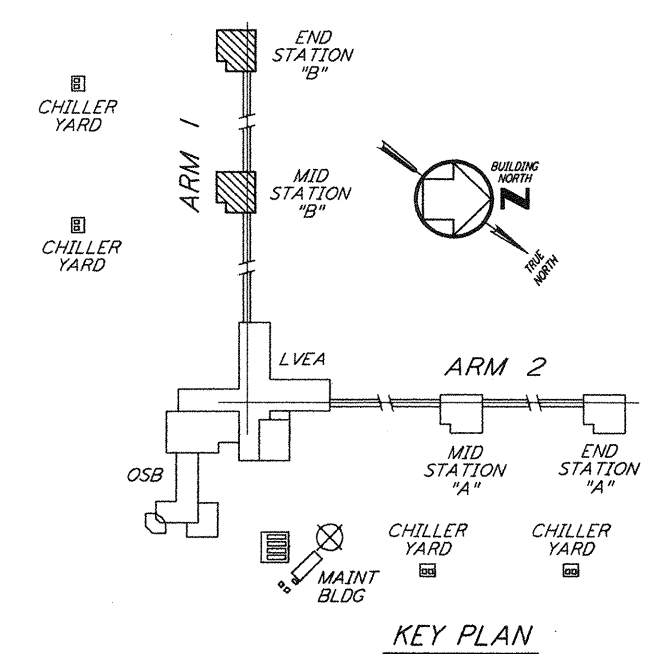


NOTES:
 1. FOR LEGEND, ABBREVIATIONS AND GENERAL NOTES SEE SHEETS
 WA-H-001 AND WA-H-002.



MID AND END STATION "B" PIPING PLAN
 1/4" = 1'-0"



KEY PLAN
 1/4" = 1'-0"

This document and the design it covers are the property of PARSONS. They are loaned only with the borrower's expressed written agreement that they will not be reproduced, copied, loaned, exhibited, or used in any other way, except by written consent from PARSONS to the borrower.

NO.	DATE	BY	CHKD	ENGR	PROJ	DESCRIPTION
1	5-15-98	CP	AA	AA		ISSUED FOR AS-BUILT

ISSUED FOR CONSTRUCTION		
DRAWN	CLP	6-24-96
CHECKED	ME	7/3/96
ENGINEER	AA	7/3/96
PROJ	MDW	7/3/96
AS-BUILT DRAWINGS		

PARSONS
 100 WEST WALNUT STREET
 PASADENA, CALIFORNIA

LIGO
 CALIFORNIA INSTITUTE OF TECHNOLOGY
 MASSACHUSETTS INSTITUTE OF TECHNOLOGY

LIGO-D960365-01-0		
LASER INTERFEROMETER GRAVITATIONAL-WAVE OBSERVATORY SITE NO. 1 - HANFORD, WASHINGTON		
TITLE	SCALE	CONTRACT NUMBER
HVAC MID & END STATIONS "B" PIPING PLAN	AS NOTED	PP150969
	SHEET NUMBER	PROJECT NUMBER
	WA-H-216	8094