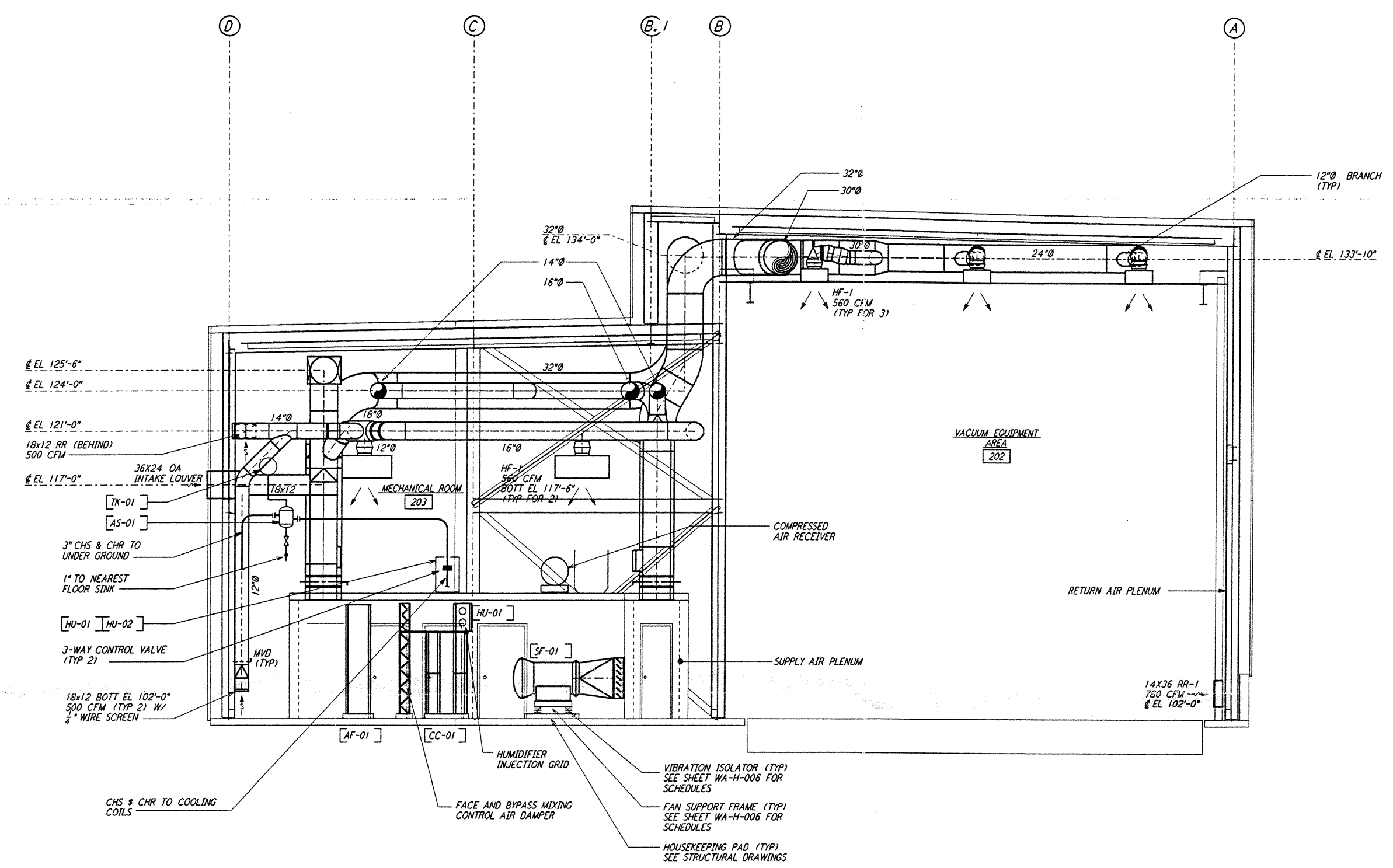
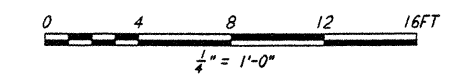


NOTES:

1. FOR LEGEND, ABBREVIATIONS AND GENERAL NOTES SEE SHEETS WA-H-001 AND WA-H-002.
2. PROVIDE HIGH PRESSURE FLEX CONNECTIONS AT THE POINT OF CONNECTION OF DUCTS AND THE AIR HANDLING UNITS.
3. SEE FLOOR PLANS FOR DUCT INSULATION NOTES.
4. LOCATE ROOM TEMPERATURE SENSOR/TRANSMITTER FOR THE MECHANICAL ROOM AT 4'-6" ABOVE FINISHED FLOOR LEVEL.
5. WHERE PIPES PENETRATE FLOOR SLAB, PROVIDE STEEL SLEEVE AND LINK SEAL.



SECTION A REF
 1/4" = 1'-0" WA-H-241 WA-H-211

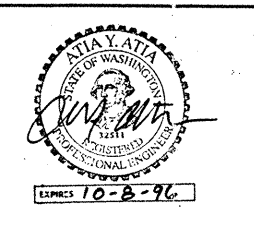


not be reproduced, copied, loaned, exhibited, or used in any other way, except by written consent from PARSONS to the borrower.

This document and the design it covers are the property of PARSONS. They are loaned only with the borrower's expressed written agreement that they will

| DRAWING NO. | DESCRIPTION | NO. | DATE | BY | CHKD | ENGR | PROJ | DESCRIPTION |
|-------------|-------------|-----|------|----|------|------|------|-------------|
| | | | | | | | | |
| | | | | | | | | |

| | |
|-------------------------|-------------|
| ISSUED FOR CONSTRUCTION | |
| DRAWN | CLP 6-24-96 |
| CHECKED | MM 7/3/96 |
| ENGINEER | AA 7/3/96 |
| PROJ | WLA 7/19/96 |



PARSONS
 100 WEST WALNUT STREET
 PASADENA, CALIFORNIA

LIGO
 CALIFORNIA INSTITUTE OF TECHNOLOGY
 MASSACHUSETTS INSTITUTE OF TECHNOLOGY

LASER INTERFEROMETER
 GRAVITATIONAL-WAVE OBSERVATORY
 SITE NO. 1 - HANFORD, WASHINGTON

| | | | | | | | |
|--------------|--|-----------|----------|-----------------|----------|----------------|------|
| TITLE | HVAC MID & END STATIONS SECTIONS SHEET 1 | SCALE | AS NOTED | CONTRACT NUMBER | PP150969 | PROJECT NUMBER | 8094 |
| SHEET NUMBER | WA-H-241 | REVISIONS | | | | | |