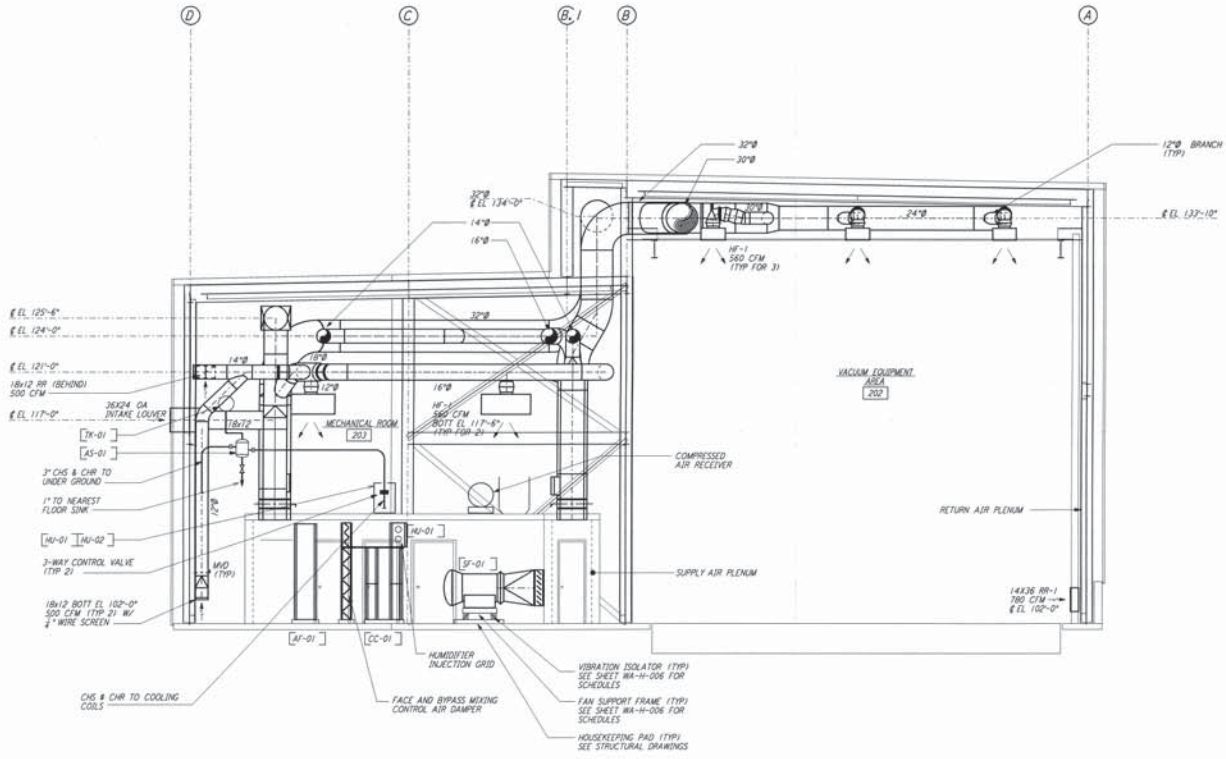


This document and the design it covers are the property of PARSONS. They are loaned only with the borrower's expressed written agreement that they will not be reproduced, copied, loaned, exhibited, or used in any other way, except by written consent from PARSONS to the borrower.



- NOTES:**
1. FOR LEGEND, ABBREVIATIONS AND GENERAL NOTES SEE SHEETS WA-H-207 AND WA-H-208.
 2. PROVIDE HIGH PRESSURE FLEX CONNECTIONS AT THE POINT OF CONNECTION OF DUCTS AND THE AIR HANDLING UNITS.
 3. SEE FLOOR PLANS FOR DUCT INSULATION NOTES.
 4. LOCATE ROOM TEMPERATURE SENSOR/TRANSMITTER FOR THE MECHANICAL ROOM AT 4'-8" ABOVE FINISHED FLOOR LEVEL.
 5. WHERE PIPES PENETRATE FLOOR SLAB, PROVIDE STEEL SLEEVE AND LINK SEAL.

SECTION A
 1/2" = 1'-0"

REF.	NO.	DATE	BY	CHKD	ENGR	PROJ	DESCRIPTION
1	5-15-98	CP	AA	AA			ISSUED FOR AS-BUILT

ISSUED FOR CONSTRUCTION	
DRAWN	CLP 6-24-96
CHECKED	JME 7-3-96
ENGINEER	AA 7-3-96
PROJ	PD/DM 7-3-96
AS-BUILT DRAWINGS	

PARSONS
 100 WEST WALNUT STREET
 PASADENA, CALIFORNIA

LIGO
 CALIFORNIA INSTITUTE OF TECHNOLOGY
 MASSACHUSETTS INSTITUTE OF TECHNOLOGY

LIGO-D960368-01-0
 LASER INTERFEROMETER
 GRAVITATIONAL-WAVE OBSERVATORY
 SITE NO. 1 - HANFORD, WASHINGTON

TITLE	HYAC	AS NOTED	PP150969	8094
SHEET NUMBER	WA-H-241		SECTION SHEET 1	

