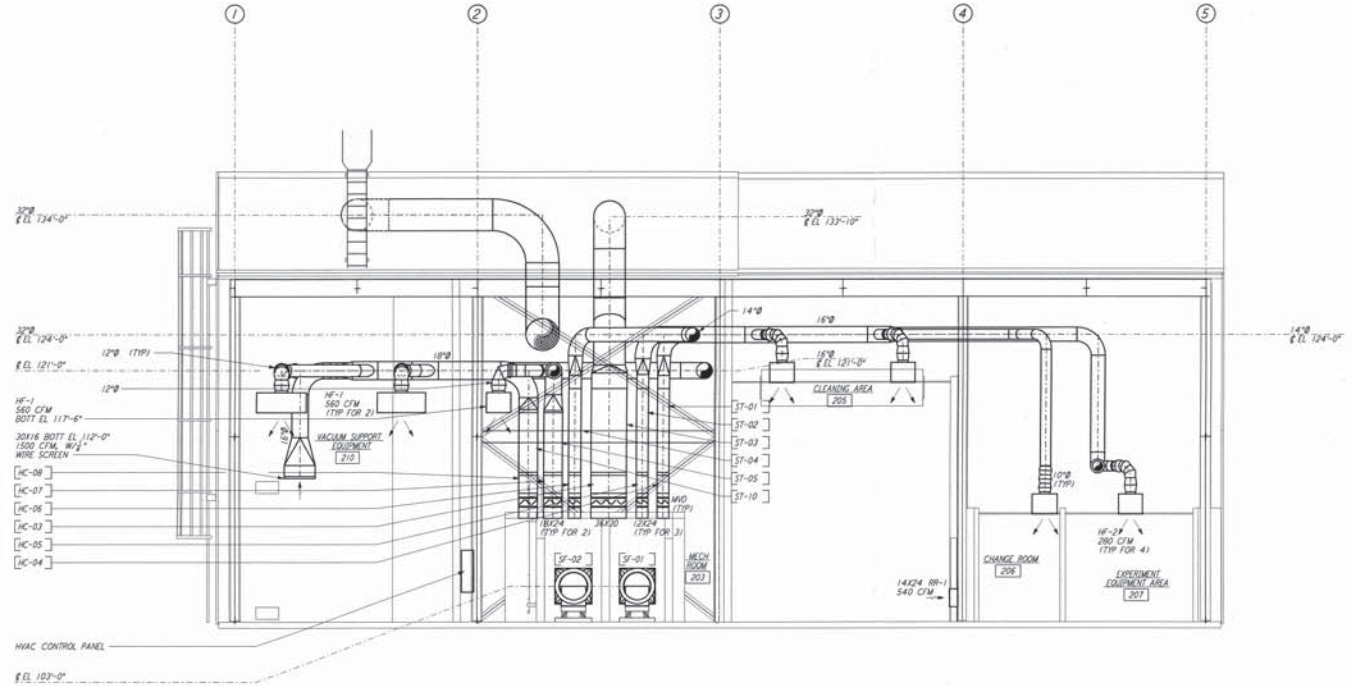


NOTES:
 1. FOR LEGEND, ABBREVIATIONS AND GENERAL NOTES SEE SHEETS
 WA-H-201 AND WA-H-202.



SECTION B
 1/4" = 1'-0" REF: WA-H-242 WA-H-211

This document and the design it covers are the property of PARSONS. It is to be used only for the project and for the purposes expressed in the contract. It is not to be reproduced, copied, issued, exhibited, or used in any way without the written consent from PARSONS in the instrument.

NO.	DATE	BY	CHKD	ENGR	PROJ	DESCRIPTION
1	5-15-98	CP	AA	AA	PP	ISSUED FOR AS-BUILT

ISSUED FOR CONSTRUCTION
 DRAWN: CLP 6-24-98
 CHECKED: MJE 7/21/98
 ENGINEER: A.A. 7/17/98
 PROJ: MCDW 7/17/98

AS-BUILT DRAWINGS



LIGO-D960369-01-0

LASER INTERFEROMETER
 GRAVITATIONAL-WAVE OBSERVATORY
 SITE NO. 1 - HANFORD, WASHINGTON

TITLE: HVAC
 MID & END STATIONS
 SECTIONS SHEET 2

AS NOTED PPI50969 8094
WA-H-242

