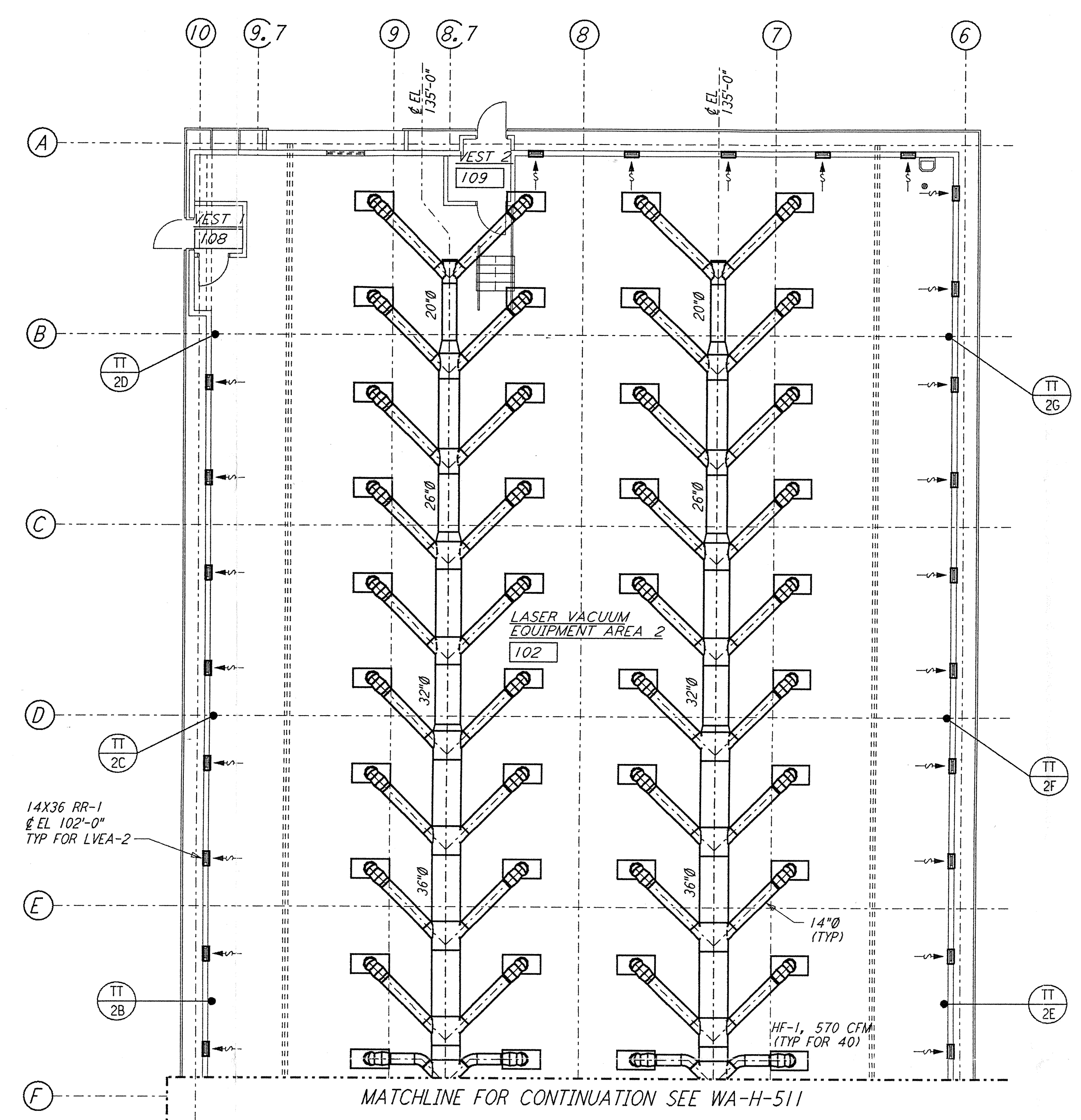


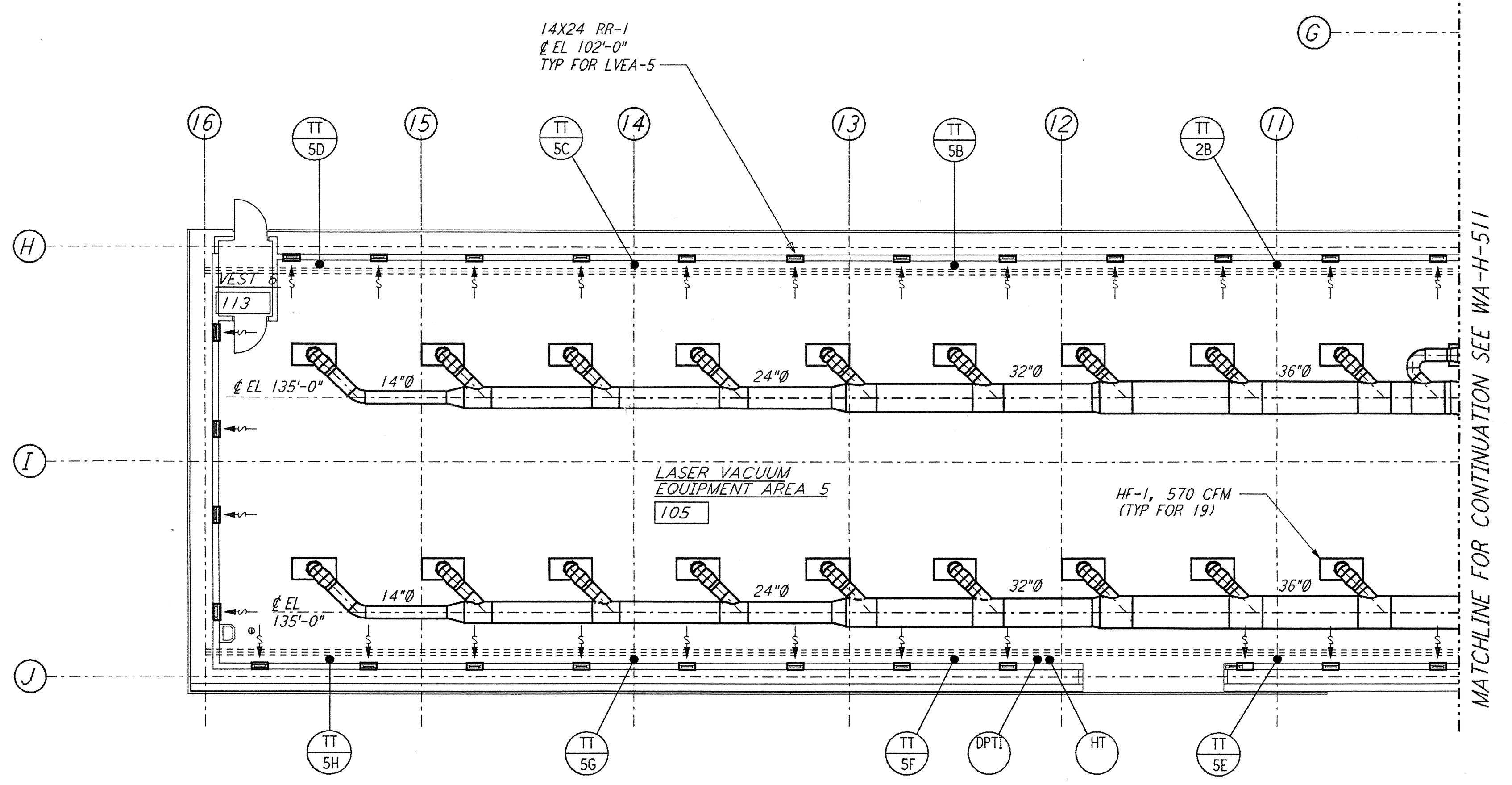
not be reproduced, copied, loaned, exhibited, or used in any other way, except by written consent from PARSONS to the borrower.

This document and the design it covers are the property of PARSONS. They are loaned only with the borrower's expressed written agreement that they will

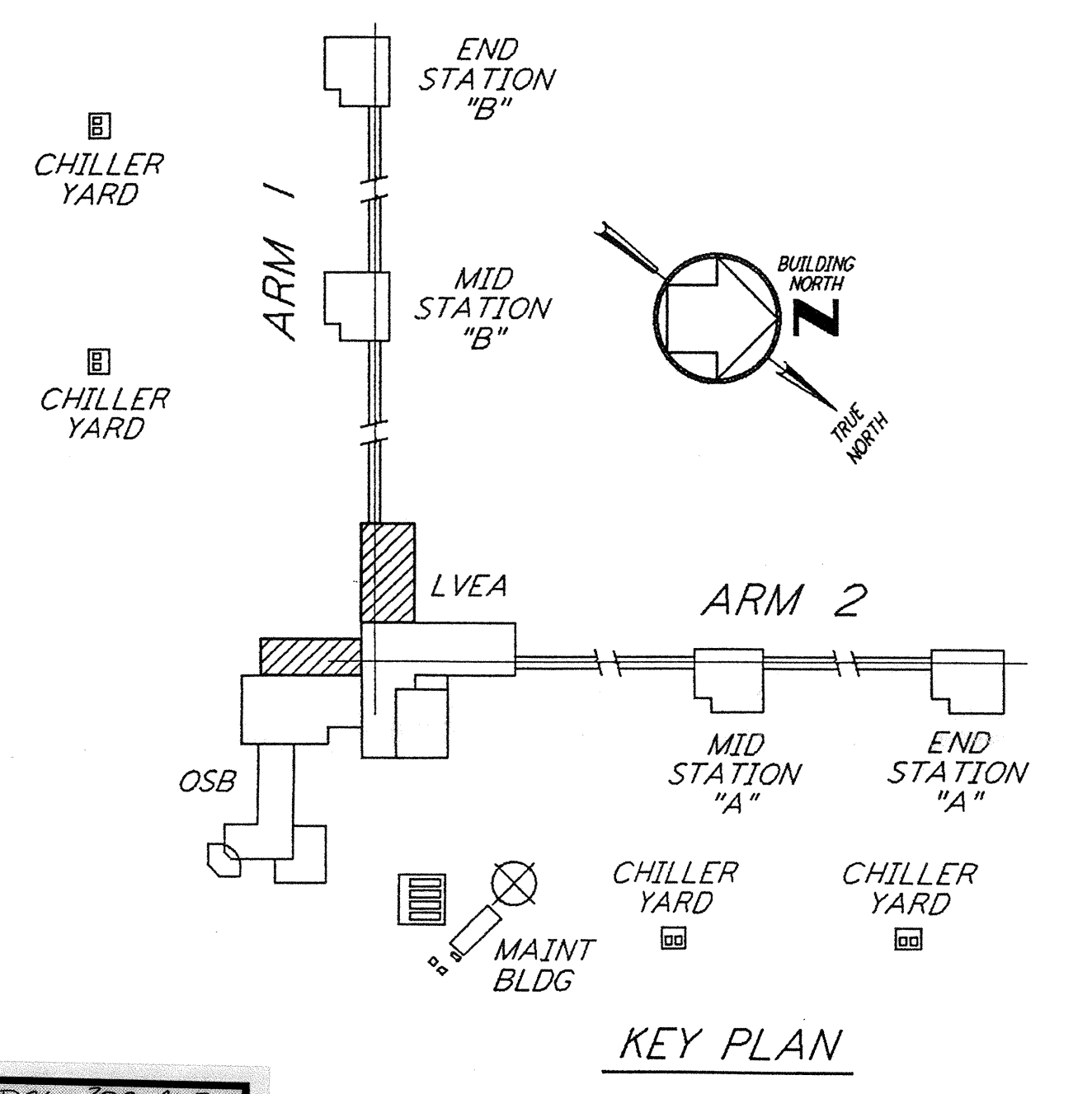


- NOTES:**
- FOR LEGEND, ABBREVIATIONS AND GENERAL NOTES SEE SHEETS WA-H-001 AND WA-H-002.
 - SEE SHEET WA-H-511 FOR APPLICABLE NOTES AND LEGEND.

ROOM TEMPERATURE SETTING		
ROOM NAME	TEMPERATURE SET POINT (°F)	
	MIN	MAX
LASER AREA-2	72	72
LASER AREA-5	72	72



LVEA FLOOR PLAN
 1/8" = 1'-0"



Date Received: 4-19-96	LIG-0960382-A-D
YIM #: 28	Contract # WA-H-312 RA
Date: 4/19/96	LIG-0960387-00-U
YIM #:	Approved:
Date: / /	Approved:
Gen'l Transmittal:	LIG-:
Date: / /	Approved:

NO.	DATE	BY	CHKD	ENGR	PROJ	DESCRIPTION
A	4-19-96	CLP	ME	AA		FINAL DESIGN REVIEW & BID

DRAWN	CLP
CHECKED	
ENGINEER	
PROJ	

PARSONS
 100 WEST WALNUT STREET
 PASADENA, CALIFORNIA

LIGO
 CALIFORNIA INSTITUTE OF TECHNOLOGY
 MASSACHUSETTS INSTITUTE OF TECHNOLOGY

LASER INTERFEROMETER
 GRAVITATIONAL-WAVE OBSERVATORY
 SITE NO. 1 - HANFORD, WASHINGTON

TITLE	AS NOTED	CONTRACT NUMBER	PROJECT NUMBER
HVAC CORNER STATION LVEA FLOOR PLAN SHEET 2	PP150969	8094	
WA-H-512			