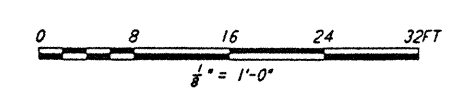
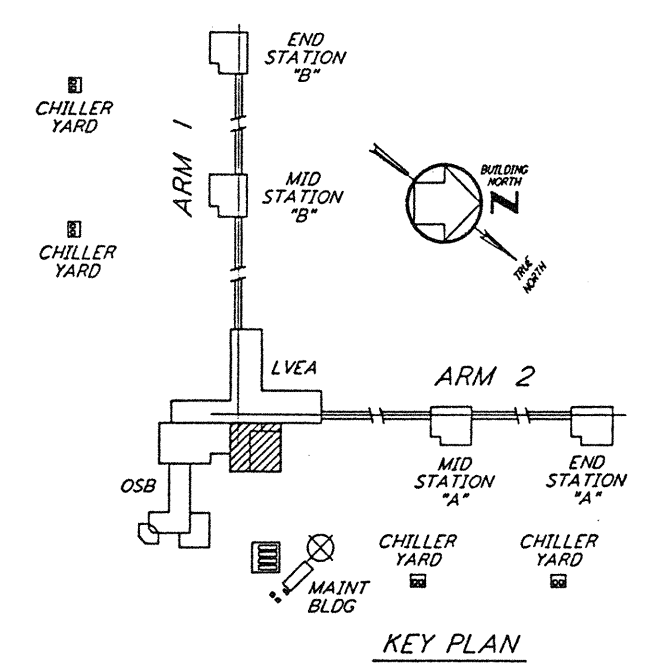
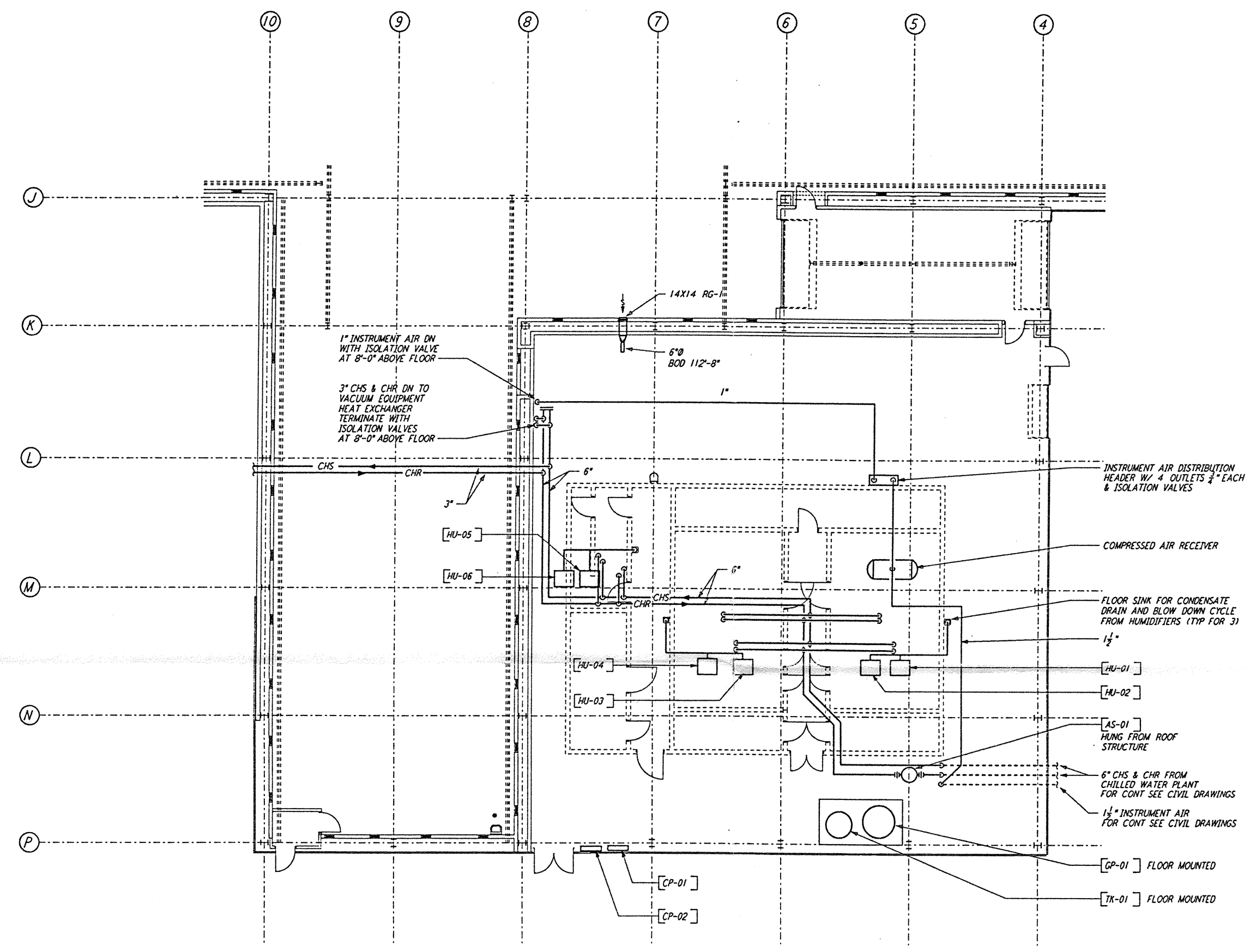
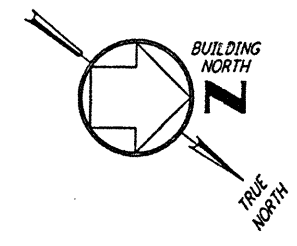


**NOTES:**  
 1. FOR LEGEND, ABBREVIATIONS AND GENERAL NOTES SEE SHEETS  
 WA-H-001 AND WA-H-002.



not be reproduced, copied, loaned, exhibited, or used in any other way, except by written consent from PARSONS to the borrower.

This document and the design it covers are the property of PARSONS. They are loaned only with the borrower's expressed written agreement that they will

REFERENCES		REVISIONS		DRAWN		CHECKED		ENGINEER		PROJ	
NO.	DATE	BY	CHKD	ENGR	PROJ	NO.	DATE	BY	CHKD	ENGR	PROJ
A	4-19-96	CLP	ME	AA	MM						
FINAL DESIGN REVIEW & BID											

DRAWN: CLP  
 CHECKED:  
 ENGINEER:  
 PROJ:

**PARSONS**  
 100 WEST WALNUT STREET  
 PASADENA, CALIFORNIA

**LIGO**  
 CALIFORNIA INSTITUTE OF TECHNOLOGY  
 MASSACHUSETTS INSTITUTE OF TECHNOLOGY

LASER INTERFEROMETER  
 GRAVITATIONAL-WAVE OBSERVATORY  
 SITE NO. 1 - HANFORD, WASHINGTON  
 TITLE: HVAC CORNER STATION LVEA & OSB MECHANICAL ROOM PIPING PLAN  
 AS NOTED PPI50969 8094  
**WA-H-513**

LIG0-D960383-A-D

LIGOWAF3.BDR