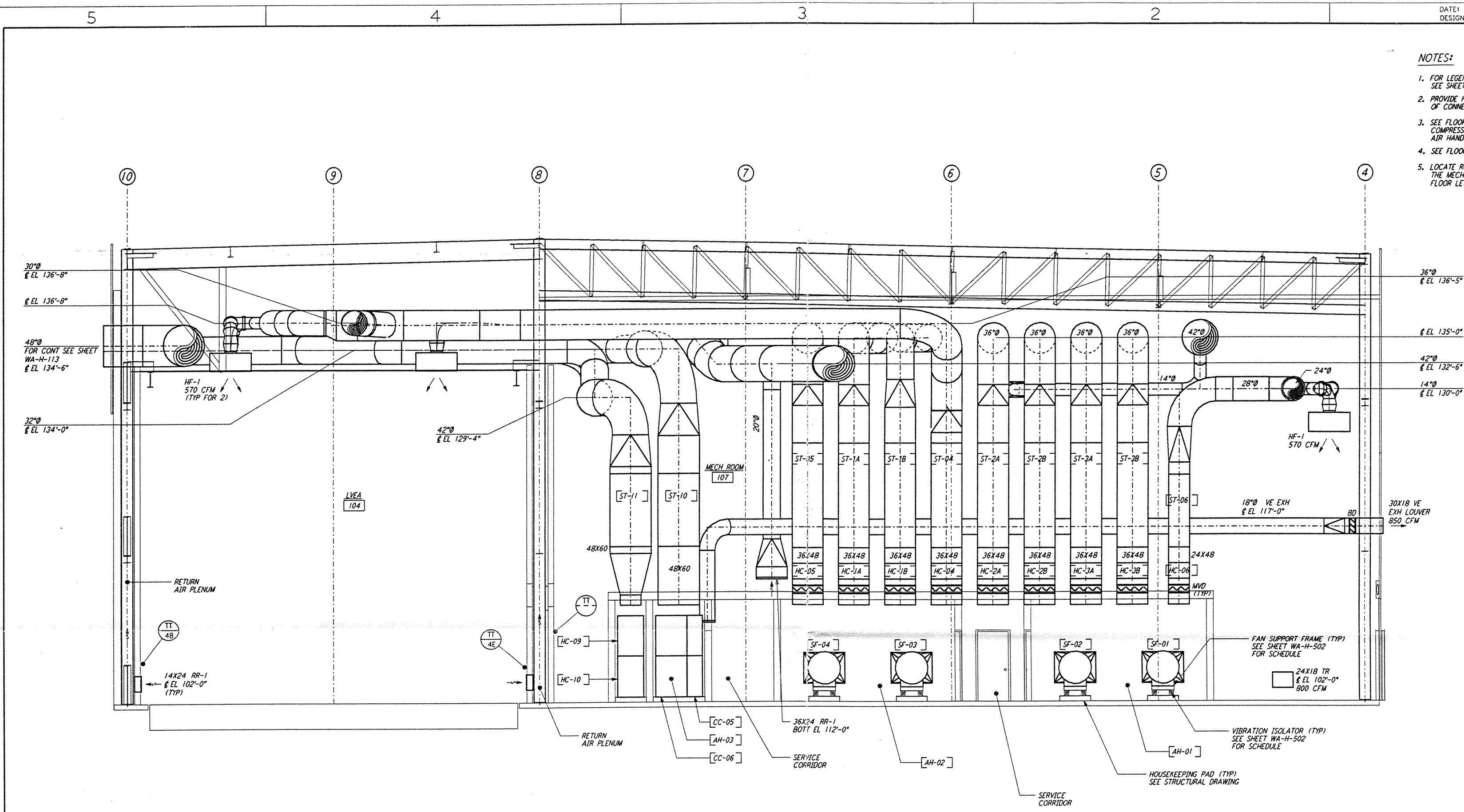


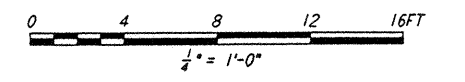
NOTES:

1. FOR LEGEND, ABBREVIATIONS AND GENERAL NOTES SEE SHEETS WA-H-001 AND WA-H-002.
2. PROVIDE HIGH PRESSURE FLEX CONNECTION AT THE POINT OF CONNECTION OF DUCTS AND THE AIR HANDLING UNITS.
3. SEE FLOOR PLAN (SHEET WA-H-513) FOR LOCATION OF COMPRESSED AIR RECEIVER AND HUMIDIFIERS ABOVE THE AIR HANDLING UNITS.
4. SEE FLOOR PLAN NOTES FOR DUCT INSULATION.
5. LOCATE ROOM TEMPERATURE SENSOR / TRANSMITTER FOR THE MECHANICAL ROOM AT 4'-6" ABOVE FINISHED FLOOR LEVEL.

This document and the design it covers are the property of PARSONS. They are loaned only with the borrower's expressed written agreement that they will not be reproduced, copied, loaned, exhibited, or used in any other way, except by written consent from PARSONS to the borrower.

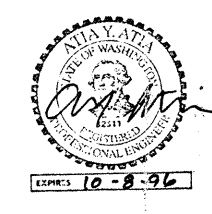


SECTION A REF
 1/4" = 1'-0" WA-H-551 WA-H-511



NO.	DATE	BY	CHKD	ENGR	PROJ	DESCRIPTION

ISSUED FOR CONSTRUCTION	CLP	6-24-96
DRAWN	AA	7/5/96
CHECKED	AA	7/13/96
ENGINEER	AA	7/13/96
PROJ	AA	7/13/96



LASER INTERFEROMETER GRAVITATIONAL-WAVE OBSERVATORY SITE NO. 1 - HANFORD, WASHINGTON		
TITLE	SCALE	CONTRACT NUMBER
HVAC CORNER STATION SECTIONS SHEET 1	AS NOTED	PP150969
SHEET NUMBER		PROJECT NUMBER
WA-H-551		8094

LIGO-D960386-00-01