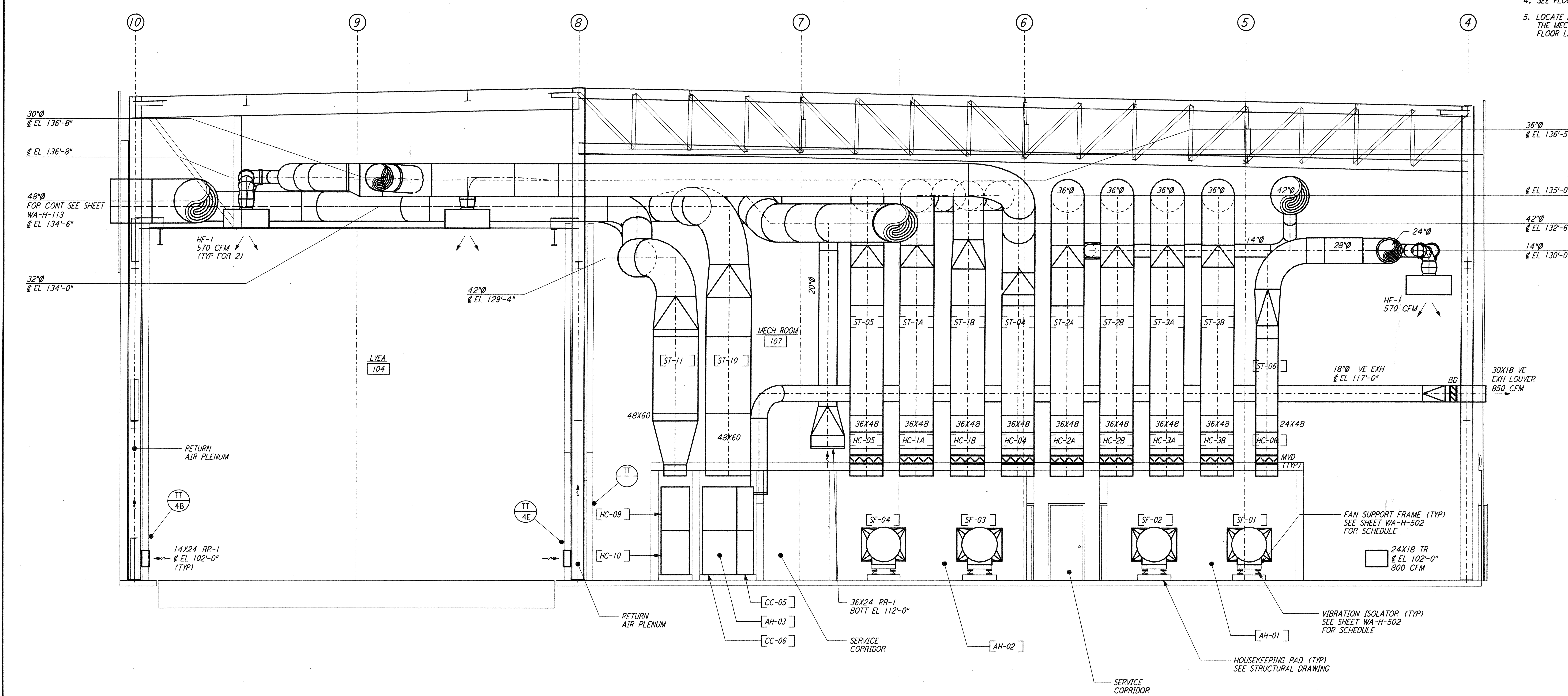


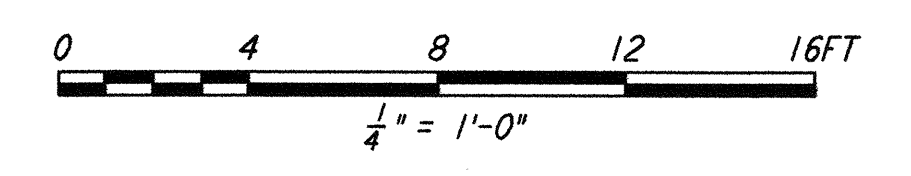
**NOTES:**

1. FOR LEGEND, ABBREVIATIONS AND GENERAL NOTES SEE SHEETS WA-H-001 AND WA-H-002.
2. PROVIDE HIGH PRESSURE FLEX CONNECTION AT THE POINT OF CONNECTION OF DUCTS AND THE AIR HANDLING UNITS.
3. SEE FLOOR PLAN (SHEET WA-H-513) FOR LOCATION OF COMPRESSED AIR RECEIVER AND HUMIDIFIERS ABOVE THE AIR HANDLING UNITS.
4. SEE FLOOR PLAN NOTES FOR DUCT INSULATION.
5. LOCATE ROOM TEMPERATURE SENSOR /TRANSMITTER FOR THE MECHANICAL ROOM AT 4'-6" ABOVE FINISHED FLOOR LEVEL.

This document and the design it covers are the property of PARSONS. They are loaned only with the borrower's expressed written agreement that they will not be reproduced, copied, loaned, exhibited, or used in any other way, except by written consent from PARSONS to the borrower.



**SECTION A**  
 REF: WA-H-551, WA-H-511  
 1/4" = 1'-0"



**LIGO-D960386-01-O**

LASER INTERFEROMETER  
 GRAVITATIONAL-WAVE OBSERVATORY  
 SITE NO. 1 - HANFORD, WASHINGTON

NO.	DATE	BY	CHKD	ENGR	PROJ	DESCRIPTION
1	5-15-98	CP	AA	AA		ISSUED FOR AS-BUILT

ISSUED FOR CONSTRUCTION		
DRAWN	CLP	6-24-96
CHECKED	ME	7/3/96
ENGINEER	AA	7/3/96
PROJ	MDW	7/8/96

**AS-BUILT DRAWINGS**

**PARSONS**  
 100 WEST WALNUT STREET  
 PASADENA, CALIFORNIA

**LIGO**  
 CALIFORNIA INSTITUTE OF TECHNOLOGY  
 MASSACHUSETTS INSTITUTE OF TECHNOLOGY

TITLE	SCALE	CONTRACT NUMBER	PROJECT NUMBER
HVAC CORNER STATION SECTIONS SHEET 1	AS NOTED	PP150969	8094
SHEET NUMBER		REVISIONS	
<b>WA-H-551</b>			