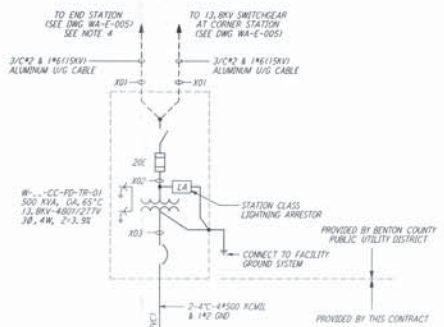
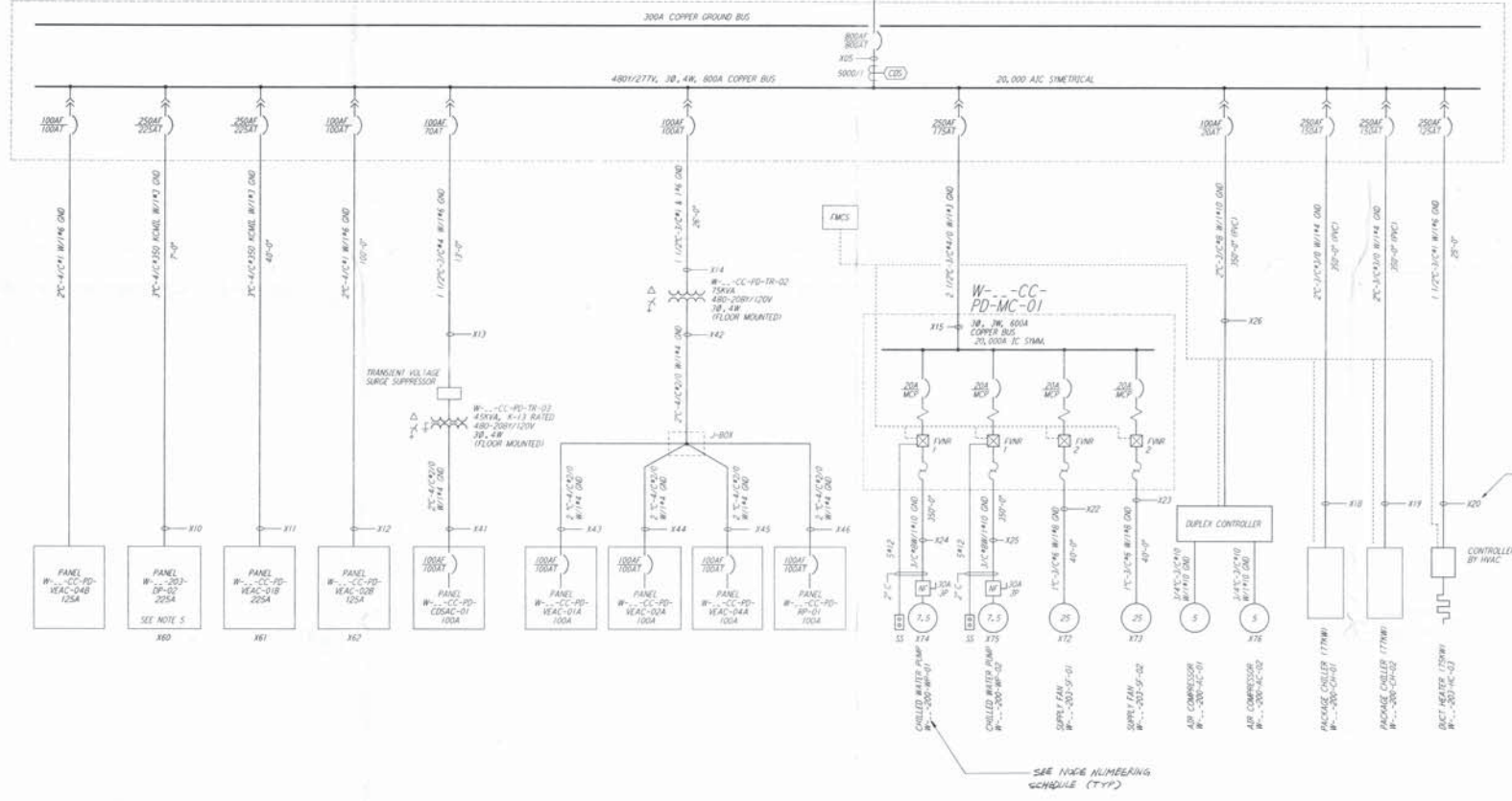


**NOTES:**

1. FOR LEGEND AND GENERAL NOTES SEE DWG WA-E-005.
2. ALL CONDUCTORS ARE COPPER UNLESS OTHERWISE NOTED.
3. ALL TRANSFORMER WINDINGS ARE ALUMINUM UNLESS OTHERWISE NOTED.
4. 15.8KV CABLES ARE SHOWN FOR TYPICAL MID STATION. THE END STATION IS SIMILAR EXCEPT, A SINGLE CABLE CONNECTS TO TRANSFORMER PRIMARY.
5. PANEL UP-02 SHALL BE PROVIDED WITH REMOTE CONTROLLED CIRCUIT BREAKERS FOR ALL LIGHTING CIRCUITS (9 CIRCUITS), PROVIDE 1 SPARE SINGLE-POLE 20A REMOTE CONTROL CIRCUIT BREAKERS. REMOTE CONTROL TRANSFORMER AND BREAKERS SHALL BE SQUARE D POWERMOR OR APPROVAL EQUAL. TRANSFORMER SHALL BE COMPATIBLE WITH THE FMC'S IN SPECIFICATION SECTION 13000.
6. ALL CIRCUIT BREAKERS SHALL BE PROVIDED WITH LOCKING-LOCKABLE ACCESSORIES TO ENSURE THAT CIRCUITS ARE ENERGIZED BY AUTHORIZED PERSONNEL ONLY.
7. DISTRIBUTION AND LIGHTING PANELS SHALL BE FURNISHED WITH LOCKABLE DOORS. CIRCUIT BREAKERS SHALL BE PROVIDED WITH LOCKING-LOCKABLE ACCESSORIES TO ENSURE THAT CIRCUITS ARE ENERGIZED BY AUTHORIZED PERSONNEL ONLY.



W---CC-PD-DP-01



**ANALYTIC STUDY NOTES:**

1. X12 REPRESENTS THE ANALYTIC NODE NUMBER, AND CORRESPONDS WITH THE ETAP VERSION 7.301 ANALYTIC STUDY.

**NODE NUMBERING SCHEDULE**

BUILDING	DESIGNATOR	X
MED. ARM A	MA	3
END. ARM A	EA	4
MED. ARM B	MB	5
END. ARM B	EB	6

REPLACE X WITH THE NUMBER AT RIGHT TO IDENTIFY THE SPECIFIC MADE IN A SPECIFIC BUILDING.

This document and the design it covers are the property of PARSONS. They are loaned only with the borrower's expressed written agreement that they will not be reproduced, copied, loaned, exhibited, or used in any other way, except by written consent from PARSONS to the borrower.

This document and the design it covers are the property of PARSONS. They are loaned only with the borrower's expressed written agreement that they will not be reproduced, copied, loaned, exhibited, or used in any other way, except by written consent from PARSONS to the borrower.

NO.	DATE	BY	CHKD	ENGR	PROJ	DESCRIPTION

ISSUED FOR CONSTRUCTION	DATE	BY
DRAWN	M. M.	E-25-98
CHECKED		
ENGINEER		
PROJ		



**PARSONS**  
 100 WEST WALNUT STREET  
 PASADENA, CALIFORNIA

**LIGO**  
 CALIFORNIA INSTITUTE OF TECHNOLOGY  
 MASSACHUSETTS INSTITUTE OF TECHNOLOGY

LASER INTERFEROMETER  
 GRAVITATIONAL-WAVE OBSERVATORY  
 SITE NO. 1 - HANFORD, WASHINGTON

ELECTRICAL  
 TYPICAL END OR MID STATION  
 SINGLE LINE DIAGRAM

WA-E-008