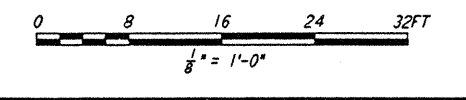
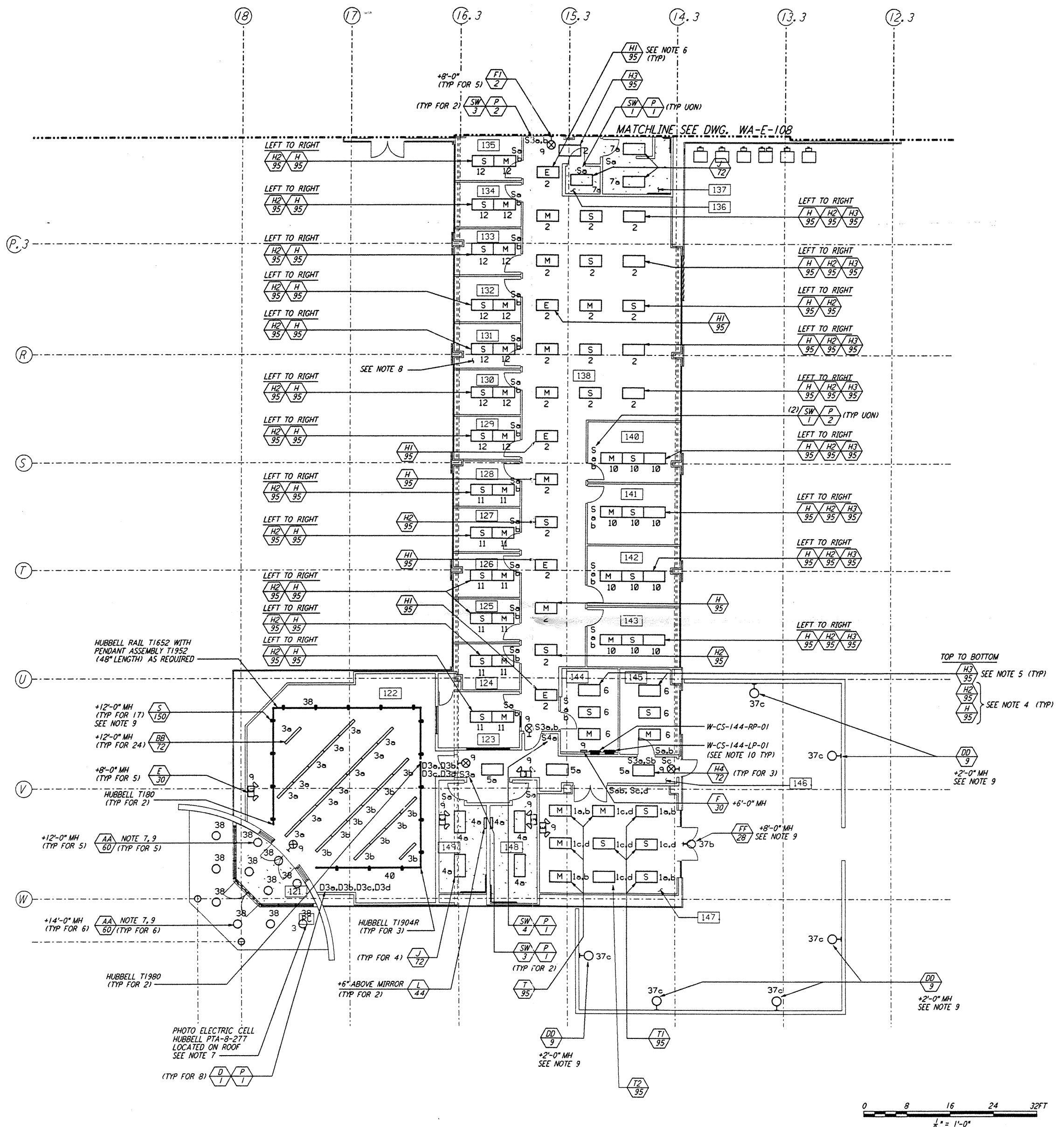
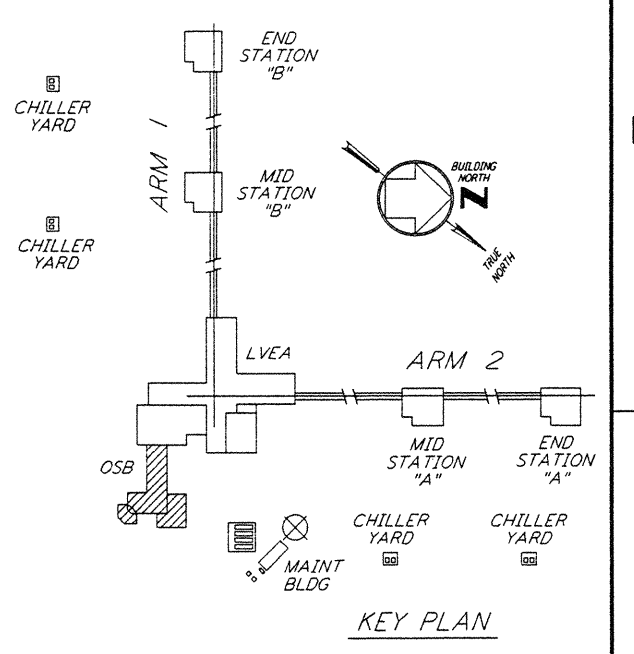


NOTES:

- 1. FOR ABBREVIATIONS AND ACRONYMS SEE DWG. WA-E-001.
- 2. FOR SYMBOLS SEE DWG. WA-E-002.
- 3. FOR GENERAL NOTES, SEE DWG. WA-E-102.
- 4. FIXTURES H-95 AND H2-95 HAVE A FLEXIBLE CABLE (BY VENDOR) CONNECTS WIRES FROM "MASTER" BALLAST TO "SATELLITE" PLUG-IN CONNECTOR. BOTH BALLASTS ARE IN THE "MASTER" UNIT.
- 5. FIXTURES H3-95 SHALL HAVE ITS BALLASTS PARALLEL SWITCHED FROM ASSOCIATED MASTER FIXTURE H-95.
- 6. FIXTURES H1-95 SHALL HAVE ITS 2-LAMP BALLAST PARALLEL SWITCH FROM ASSOCIATED MASTER FIXTURE, AND ITS 1-LAMP BALLAST SHALL NOT BE SWITCHED.
- 7. LIGHTING FIXTURES LOCATION IN VESTIBULE 121 AND AT ENTRY SHALL BE PHOTO ELECTRIC CONTROL VIA PHOTO CELL LOCATED ON ROOF.
- 8. ALL CIRCUITS SHOWN ON THIS DRAWING ARE FROM PANEL W-CS-144-LP-01 UNLESS OTHERWISE NOTED.
- 9. CIRCUIT SHOWN FEEDING THESE LIGHTING FIXTURES IS FROM PANEL W-CS-144-RP-01.
- 10. FOR ALL PANEL FEEDER CONDUIT AND WIRE SIZES SEE SINGLE LINE DIAGRAM DWG WA-E-006.

REFERENCE DRAWINGS:

- WA-E-001 ELECTRICAL SYMBOLS, ABBREVIATION & ACRONYMS
- WA-E-002 ELECTRICAL STANDARD PLAN SYMBOLS
- WA-E-102 ELECTRICAL CS LVEA LIGHTING PLAN
- WA-E-115 LIGHTING AND POWER PANEL SCHEDULES
- WA-E-116 LIGHTING AND POWER PANEL SCHEDULES



not be reproduced, copied, loaned, exhibited, or used in any other way, except by written consent from PARSONS to the borrower.

This document and the design it covers are the property of PARSONS. They are loaned only with the borrower's expressed written agreement that they will

FILE JUN 27 1996 11:00 AM LIGO-D960396-00-0

NO.	DATE	BY	CHKD	ENGR	PROJ	DESCRIPTION

ISSUED FOR CONSTRUCTION
DRAWN M.M. 6-25-96
CHECKED [Signature] 7-3-96
ENGINEER [Signature] 7-3-96
PROJ [Signature] 7-19-96



PARSONS
100 WEST WALNUT STREET
PASADENA, CALIFORNIA

LIGO
CALIFORNIA INSTITUTE OF TECHNOLOGY
MASSACHUSETTS INSTITUTE OF TECHNOLOGY

LASER INTERFEROMETER
GRAVITATIONAL-WAVE OBSERVATORY
SITE NO. 1 - HANFORD, WASHINGTON

ELECTRICAL
CORNER STATION
OSB OFFICE AREA
LIGHTING PLAN

AS NOTED PPI50969 8094

WA-E-107

LIGO-D960396-00-0