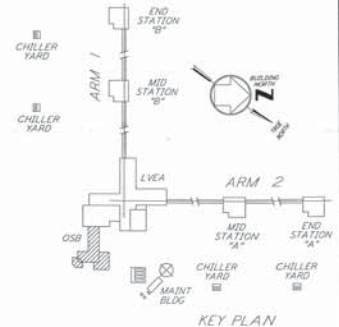
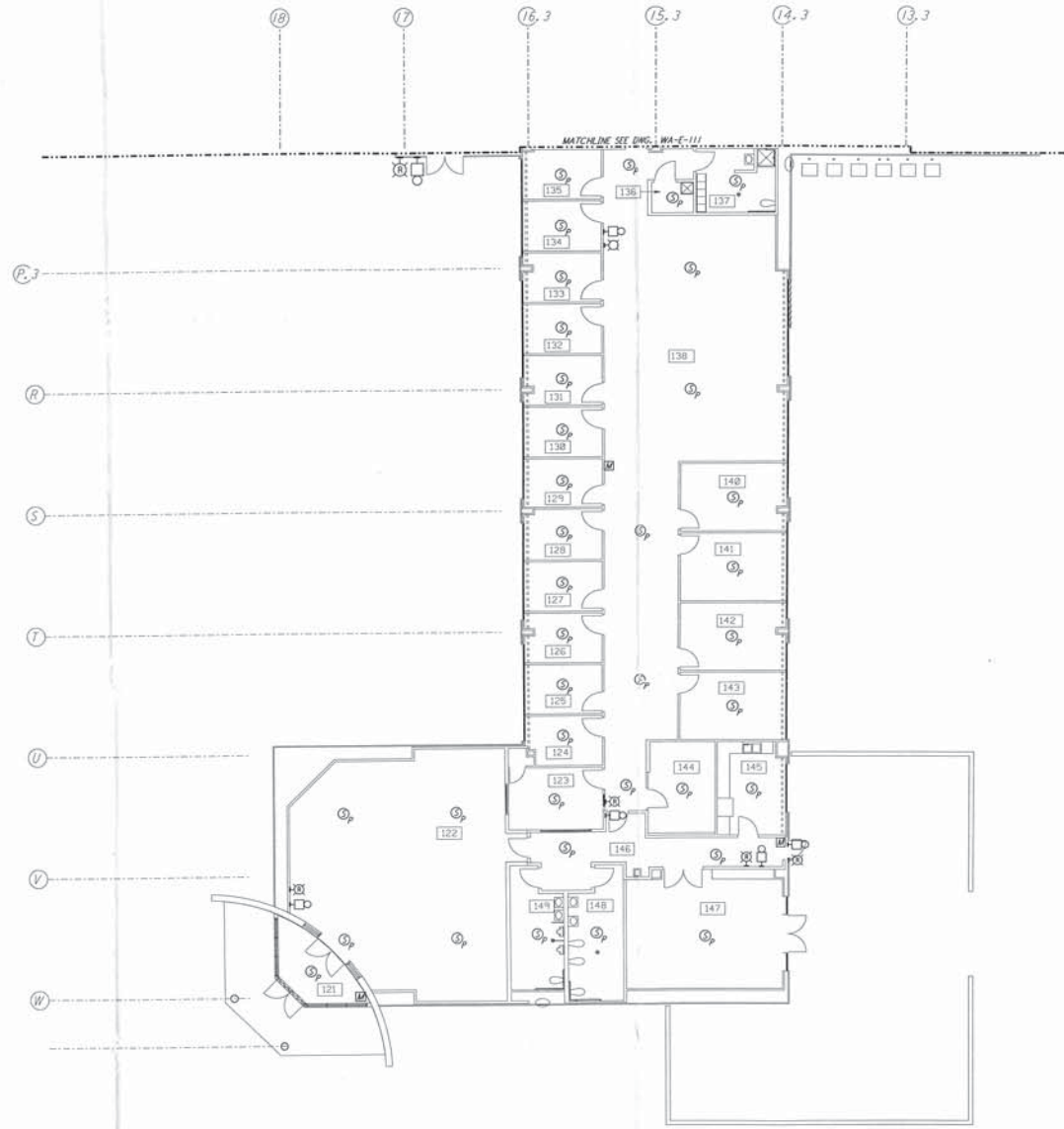
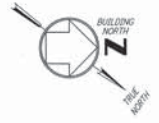


- GENERAL NOTES:**
1. FOR PLAN SYMBOLS SEE DWG WA-F-002
 2. WIRING FOR FIRE DETECTION SHALL BE CLASS "A", FOR FIRE ALARM DEVICES SHALL BE CLASS "B".
 3. DUCT MOUNTED SMOKE DETECTORS SHALL BE PROVIDED WITH AN AUXILIARY RELAY CONTACT IN C.1 FOR EQUIPMENT SHUT-DOWN.



This document and the design it covers are the property of PARSONS. They are loaned only with the borrower's expressed written agreement that they will not be reproduced, copied, loaned, exhibited, or used in any other way, except by written consent from PARSONS to the borrower.

NO.	DATE	BY	CHKD	ENGR	PROJ	DESCRIPTION
B	4-19-98	J.G.				FINAL DESIGN REVIEW & BID
A	10-31-95	TDM				PRELIMINARY DESIGN REVIEW

DESIGNED	J.G.
CHECKED	
ENGINEER	
PROJ	

PARSONS
 100 WEST WALNUT STREET
 PASADENA, CALIFORNIA

LIGO
 CALIFORNIA INSTITUTE OF TECHNOLOGY
 MASSACHUSETTS INSTITUTE OF TECHNOLOGY

LASER INTERFEROMETER
 GRAVITATIONAL-WAVE OBSERVATORY
 SITE NO. 1 - HANFORD, WASHINGTON

**ELECTRICAL
 CORNER STATION
 OFFICE AREA FIRE DET
 & SECURITY PLAN**

AS NOTED PPI50969 8094
WA-E-110

LIGO-D960399-B-C

E
D
C
B
A
 15'-0" 10'-0" 5'-0" 0'-0" 5'-0" 10'-0" 15'-0" 20'-0" 25'-0" 30'-0" 35'-0" 40'-0" 45'-0" 50'-0" 55'-0" 60'-0" 65'-0" 70'-0" 75'-0" 80'-0" 85'-0" 90'-0" 95'-0" 100'-0"