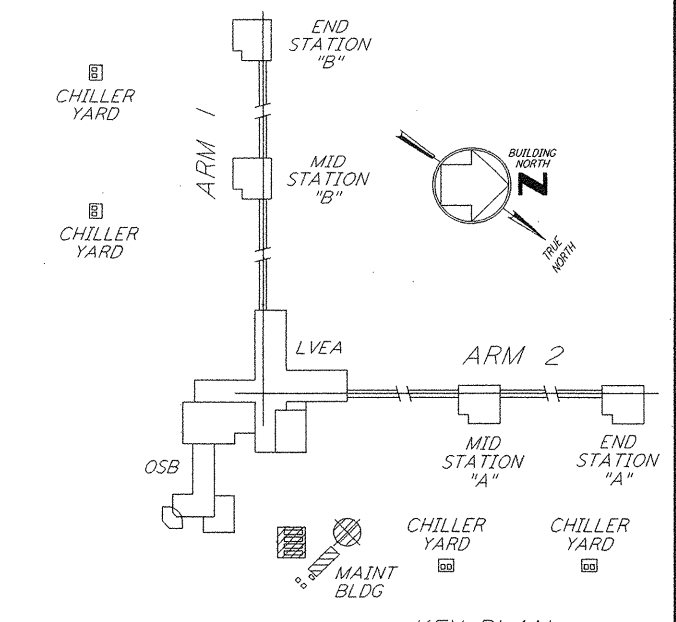
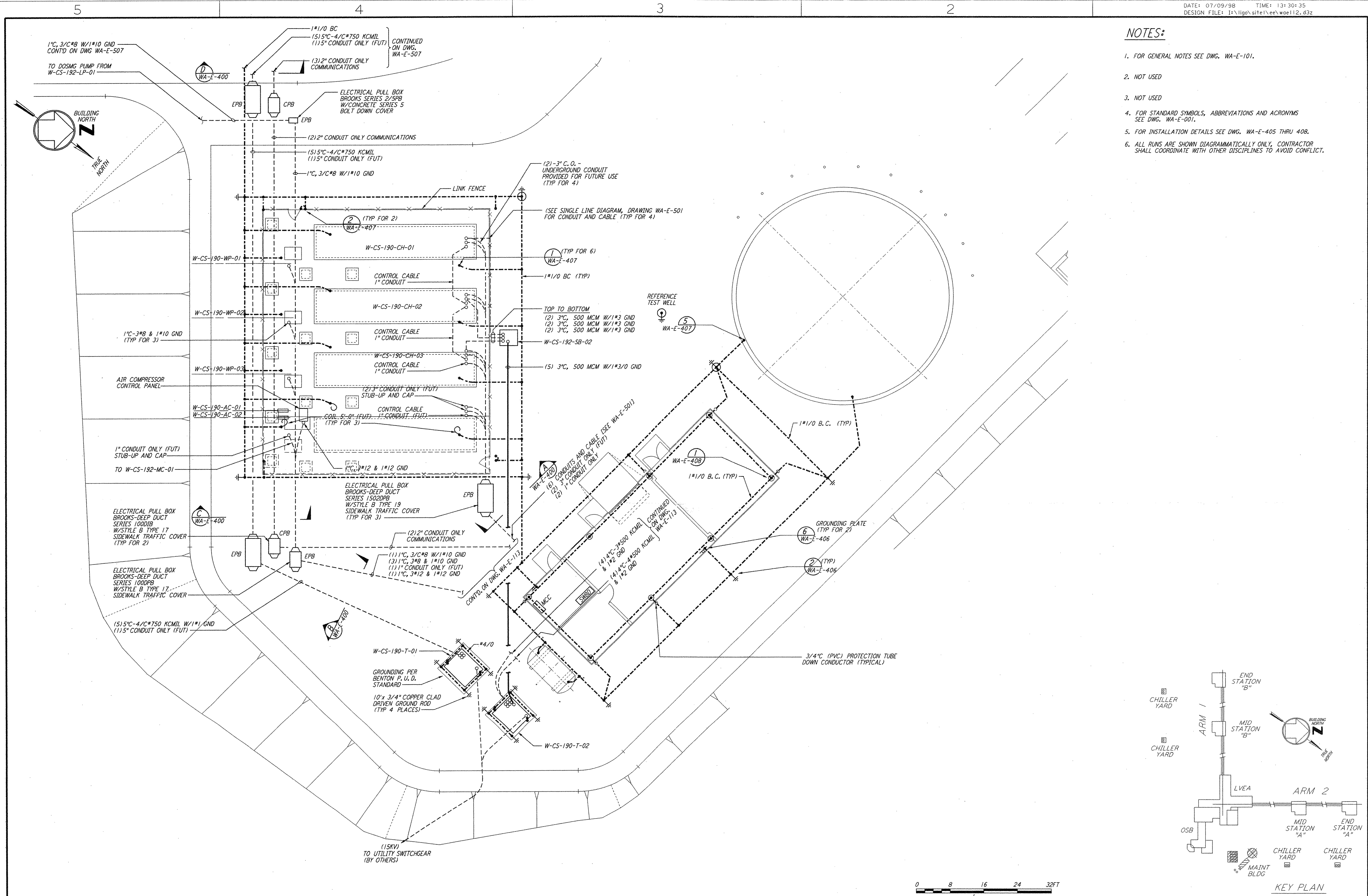


**NOTES:**

1. FOR GENERAL NOTES SEE DWG. WA-E-101.
2. NOT USED
3. NOT USED
4. FOR STANDARD SYMBOLS, ABBREVIATIONS AND ACRONYMS SEE DWG. WA-E-001.
5. FOR INSTALLATION DETAILS SEE DWG. WA-E-405 THRU 408.
6. ALL RUNS ARE SHOWN DIAGRAMMATICALLY ONLY, CONTRACTOR SHALL COORDINATE WITH OTHER DISCIPLINES TO AVOID CONFLICT.

This document and the design it covers are the property of PARSONS. They are loaned only with the borrower's expressed written agreement that they will not be reproduced, copied, loaned, exhibited, or used in any other way, except by written consent from PARSONS to the borrower.



0 8 16 24 32FT  
 1/8" = 1'-0"

NO.	DATE	BY	CHKD	ENGR	PROJ	DESCRIPTION
1	6-15-98	J.G.				ISSUED FOR AS-BUILT

ISSUED FOR CONSTRUCTION		
DRAWN	M.M.	6-25-96
CHECKED	J.K.	7-3-96
ENGINEER	K.R.	7-3-96
PROJ	M.D.W.	7-8-96

**AS-BUILT DRAWINGS**

**PARSONS**  
 100 WEST WALNUT STREET  
 PASADENA, CALIFORNIA

**LIGO**  
 CALIFORNIA INSTITUTE OF TECHNOLOGY  
 MASSACHUSETTS INSTITUTE OF TECHNOLOGY

**LASER INTERFEROMETER  
 GRAVITATIONAL-WAVE OBSERVATORY  
 SITE NO. 1 - HANFORD, WASHINGTON**

**ELECTRICAL  
 CORNER STATION  
 CHILLER PLANT &  
 MAINT BLDG GROUNDING PLAN**

SCALE: AS NOTED  
 CONTRACT NUMBER: PPI50969  
 PROJECT NUMBER: 8094  
 SHEET NUMBER: **WA-E-112**