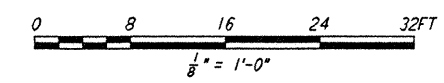
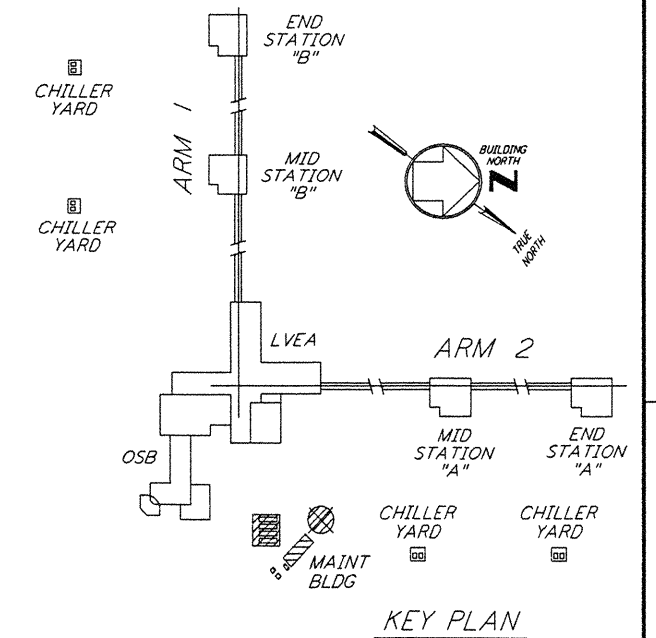
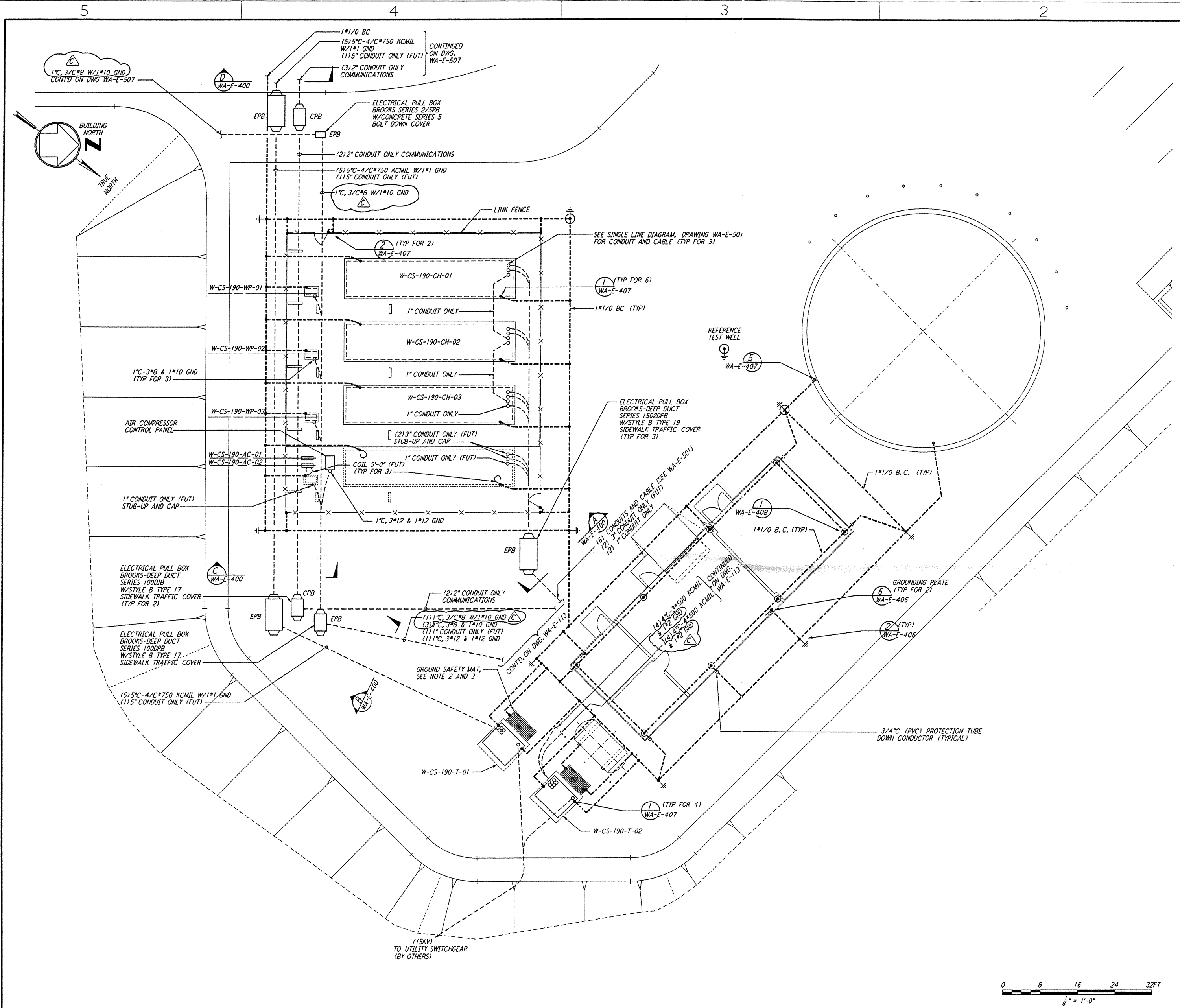


NOTES:

1. FOR GENERAL NOTES SEE DWG. WA-E-101.
2. GROUNDING MAT FOR PERSONNEL PROTECTION SHALL BE PREFABRICATED 4' X 5', SIZE 6" X 6" APART, WIRE NO. 6 AWG, 40% CONDUCTIVITY COPPERWELD, WITH CENTER WIRE # 1/0 AWG, ERICO MFR. CABLE TO MESH TYPE PT, MOLD PTC-1G2C, WELD METAL #6S.
3. GROUNDING MAT SHALL BE INSTALLED 12" DEEP MIN. ADJACENT TO HIGH VOLTAGE PRIMARY SIDE.
4. FOR STANDARD SYMBOLS, ABBREVIATIONS AND ACRONYMS SEE DWG. WA-E-001.
5. FOR INSTALLATION DETAILS SEE DWG. WA-E-405 THRU 408.
6. ALL RUNS ARE SHOWN DIAGRAMMATICALLY ONLY. CONTRACTOR SHALL COORDINATE WITH OTHER DISCIPLINES TO AVOID CONFLICT.

This document and the design it covers are the property of PARSONS. They are loaned only with the borrower's expressed written agreement that they will not be reproduced, copied, loaned, exhibited, or used in any other way, except by written consent from PARSONS to the borrower.



NO.	DATE	BY	CHKD	ENGR	PROJ	DESCRIPTION
C	5-22-96	FAE	---	---	---	BID ADDENDUM #2
B	4-19-96	---	---	---	---	FINAL DESIGN REVIEW & BID
A	10-31-95	---	---	---	---	PRELIMINARY DESIGN REVIEW

DRAWN	J. G.
CHECKED	
ENGINEER	
PROJ	

DRAWING NO.	DESCRIPTION
5	
4	
3	
2	

PARSONS
 100 WEST WALNUT STREET
 PASADENA, CALIFORNIA

LIGO
 CALIFORNIA INSTITUTE OF TECHNOLOGY
 MASSACHUSETTS INSTITUTE OF TECHNOLOGY

LASER INTERFEROMETER
 GRAVITATIONAL-WAVE OBSERVATORY
 SITE NO. 1 - HANFORD, WASHINGTON

TITLE: ELECTRICAL CORNER STATION CHILLER PLANT & MAINT BLDG GROUNDING PLAN

AS NOTED PP150969 8094

SHEET NUMBER: **WA-E-112**

SCALE: 1/8" = 1'-0"