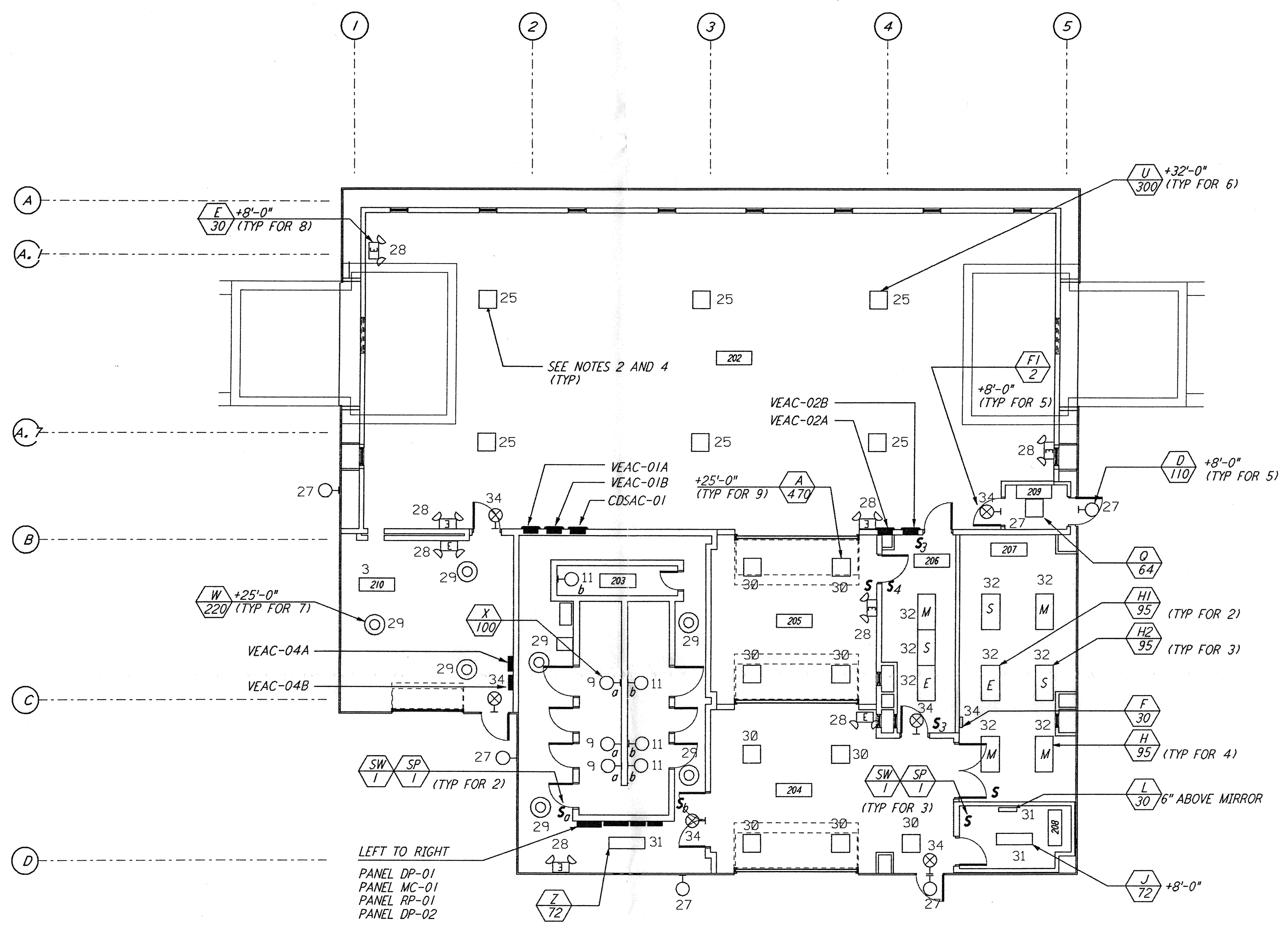
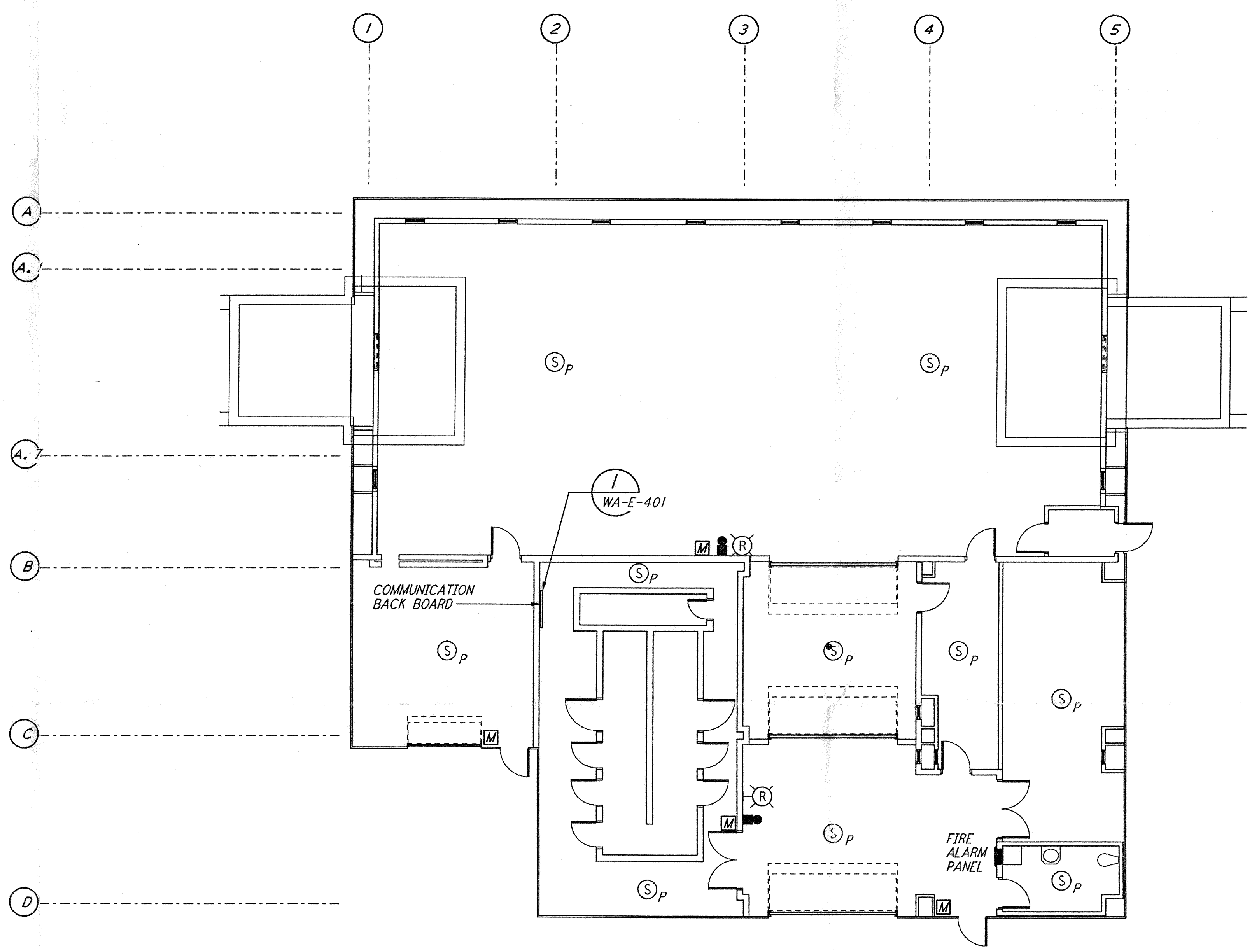


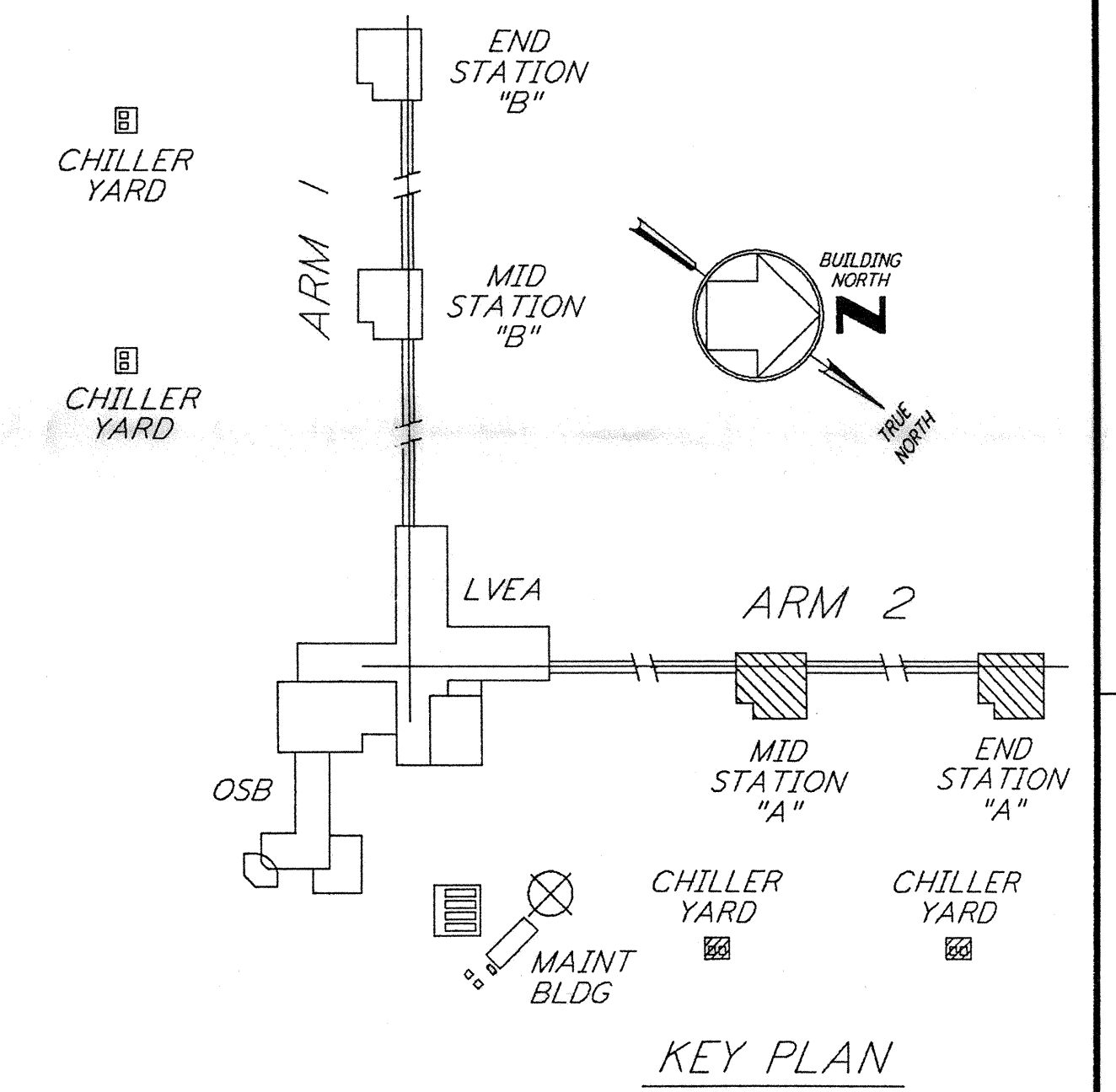
- NOTES:**
- FOR GENERAL NOTES SEE DRAWINGS WA-E-102.
 - ALL CIRCUITS SHOWN ON THIS DRAWING ARE FROM PANEL DP-02 UNLESS OTHERWISE NOTED.
 - FOR PANEL SCHEDULES SEE DRAWING WA-E-205 AND WA-E-206.
 - FOR FIXTURE LOCATION SEE ARCHITECTURAL REFLECTED CEILING PLAN ON DRAWING WA-A-221.
 - FOR FIRE DETECTION NOTES SEE DRAWING WA-E-110.



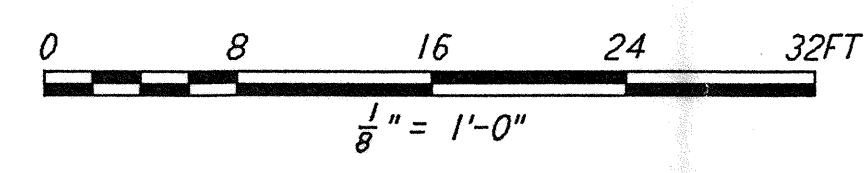
LIGHTING PLAN



COMMUNICATIONS AND FIRE DETECTION PLAN



KEY PLAN



This document and the design it covers are the property of PARSONS. They are loaned only with the borrower's expressed written agreement that they will not be reproduced, copied, loaned, exhibited, or used in any other way, except by written consent from PARSONS to the borrower.

NO.	DATE	BY	CHKD	ENGR	PROJ	DESCRIPTION
B	4-19-96	J.G.	JL	JL	TDM	FINAL DESIGN REVIEW & BID
A	10-31-95				TDM	PRELIMINARY DESIGN REVIEW

DRAWN	J.G.
CHECKED	
ENGINEER	
PROJ	

PARSONS
 100 WEST WALNUT STREET
 PASADENA, CALIFORNIA

LIGO
 CALIFORNIA INSTITUTE OF TECHNOLOGY
 MASSACHUSETTS INSTITUTE OF TECHNOLOGY

LASER INTERFEROMETER
 GRAVITATIONAL-WAVE OBSERVATORY
 SITE NO. 1 - HANFORD, WASHINGTON

TITLE	SCALE	CONTRACT NUMBER	PROJECT NUMBER
ELECTRICAL MID & END A STATIONS LIGHTING, COMMUNICATIONS & FIRE DETECTION PLAN	AS NOTED	PP150969	8094
SHEET NUMBER	REVISIONS		
WA-E-201			

LIGO-D960411-B-O
 LIGOWAF3.BDR