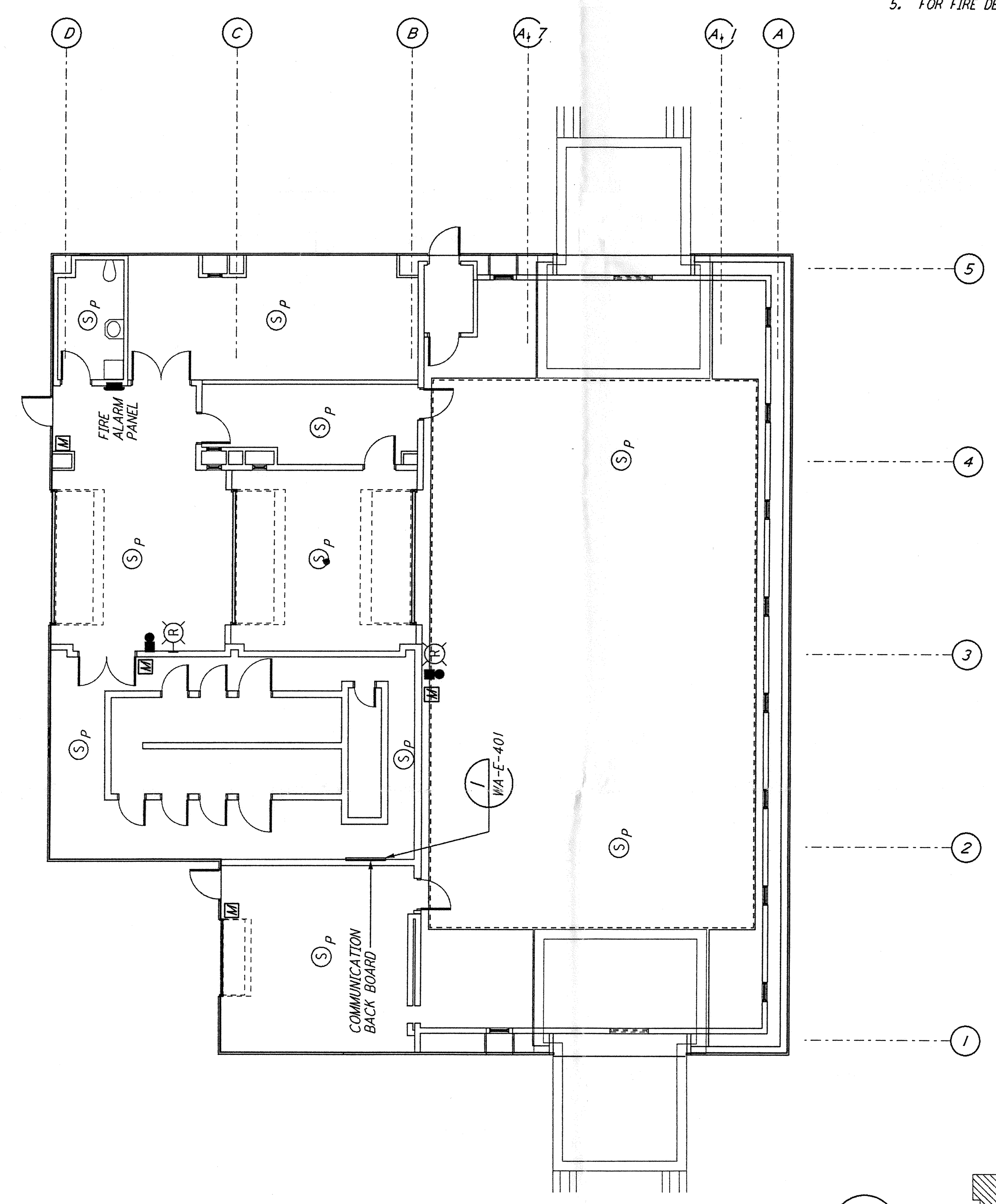
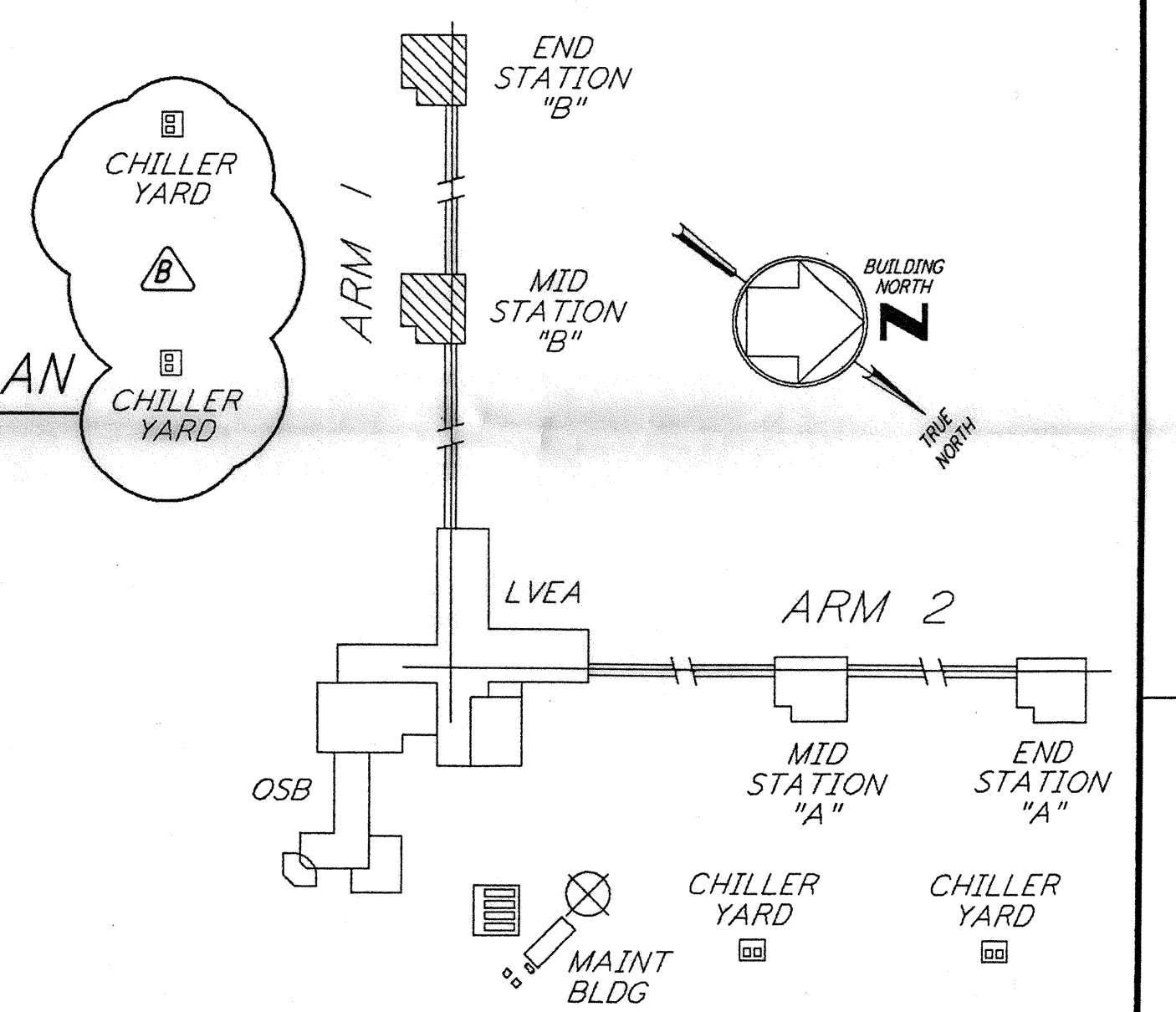


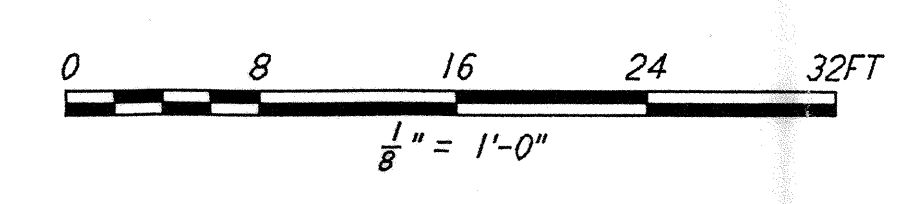
LIGHTING PLAN



COMMUNICATIONS AND FIRE DETECTION PLAN



KEY PLAN



NOTES:

- FOR GENERAL NOTES SEE DRAWINGS WA-E-102.
- ALL CIRCUITS SHOWN ON THIS DRAWING ARE FROM PANEL DP-02 UNLESS OTHERWISE NOTED.
- FOR PANEL SCHEDULES SEE DRAWING WA-E-205 AND WA-E-206.
- FOR FIXTURE LOCATION SEE ARCHITECTURAL REFLECTED CEILING PLAN ON DRAWING WA-A-221.
- FOR FIRE DETECTION NOTES SEE DRAWING WA-E-110.

not be reproduced, copied, loaned, exhibited, or used in any other way, except by written consent from PARSONS to the borrower.

This document and the design it covers are the property of PARSONS. They are loaned only with the borrower's expressed written agreement that they will

NO.	DATE	BY	CHKD	ENGR	PROJ	DESCRIPTION
B	5-22-96	RAF	MM		SDM	BID ADDENDUM #2
A	4-19-96				TDM	FINAL DESIGN REVIEW & BID

DRAWN	M. M.
CHECKED	
ENGINEER	
PROJ	

**PARSONS**

100 WEST WALNUT STREET  
 PASADENA, CALIFORNIA

**LIGO**

CALIFORNIA INSTITUTE OF TECHNOLOGY  
 MASSACHUSETTS INSTITUTE OF TECHNOLOGY

LASER INTERFEROMETER  
 GRAVITATIONAL-WAVE OBSERVATORY  
 SITE NO. 1 - HANFORD, WASHINGTON

ELECTRICAL  
 MID & END B STATIONS  
 LIGHTING, COMMUNICATIONS  
 & FIRE DETECTION PLAN

SCALE: AS NOTED  
 CONTRACT NUMBER: PPI 50969  
 PROJECT NUMBER: 8094

**WA-E-211**