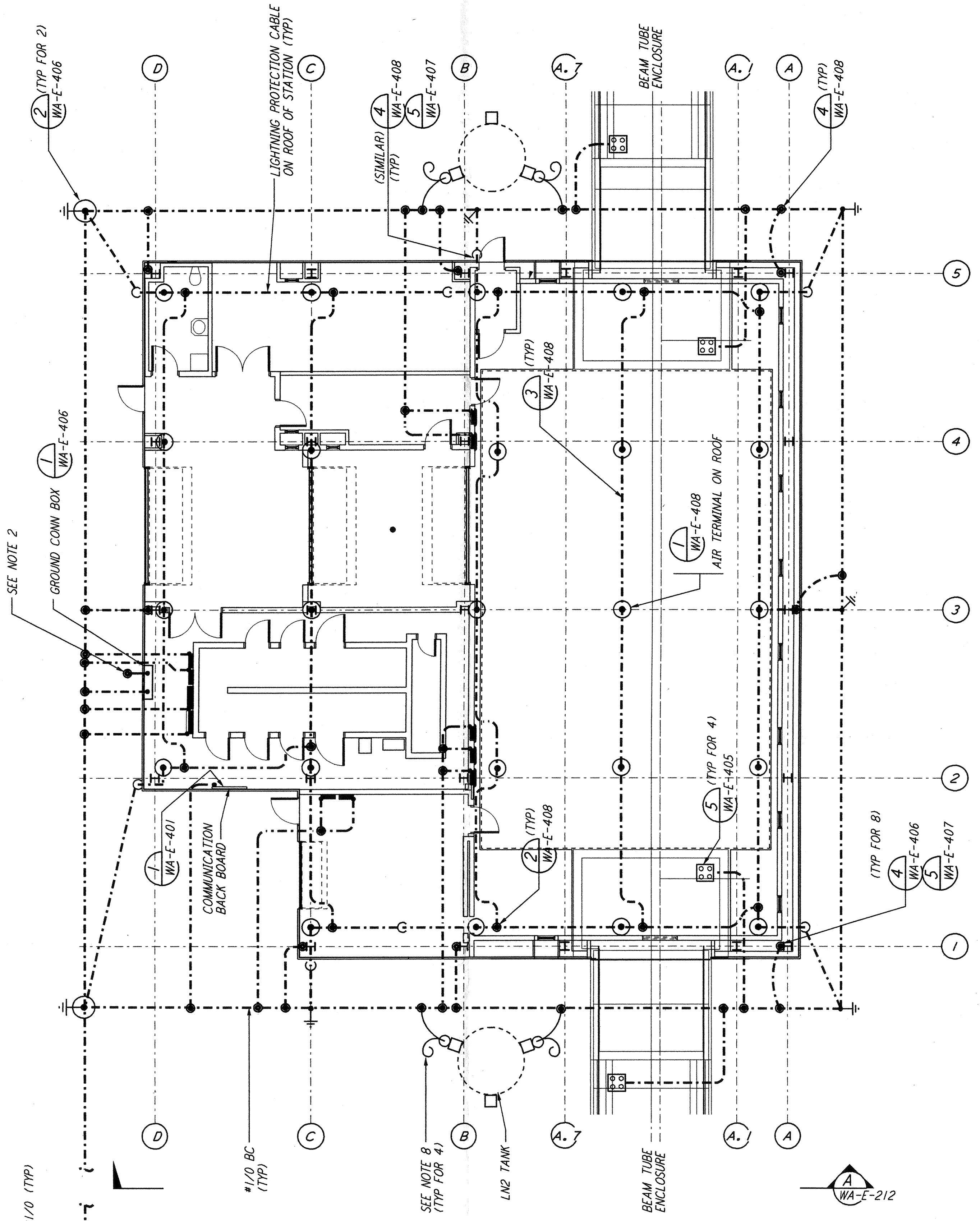
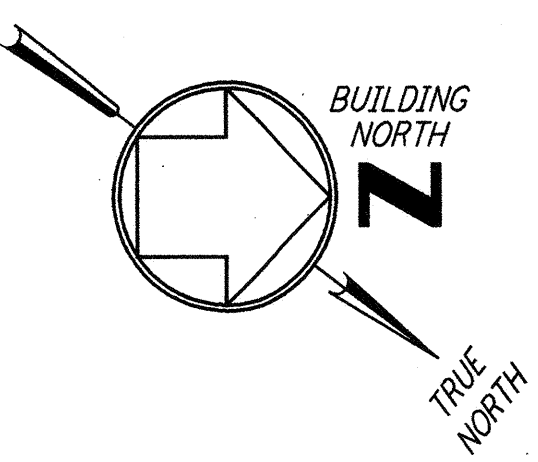
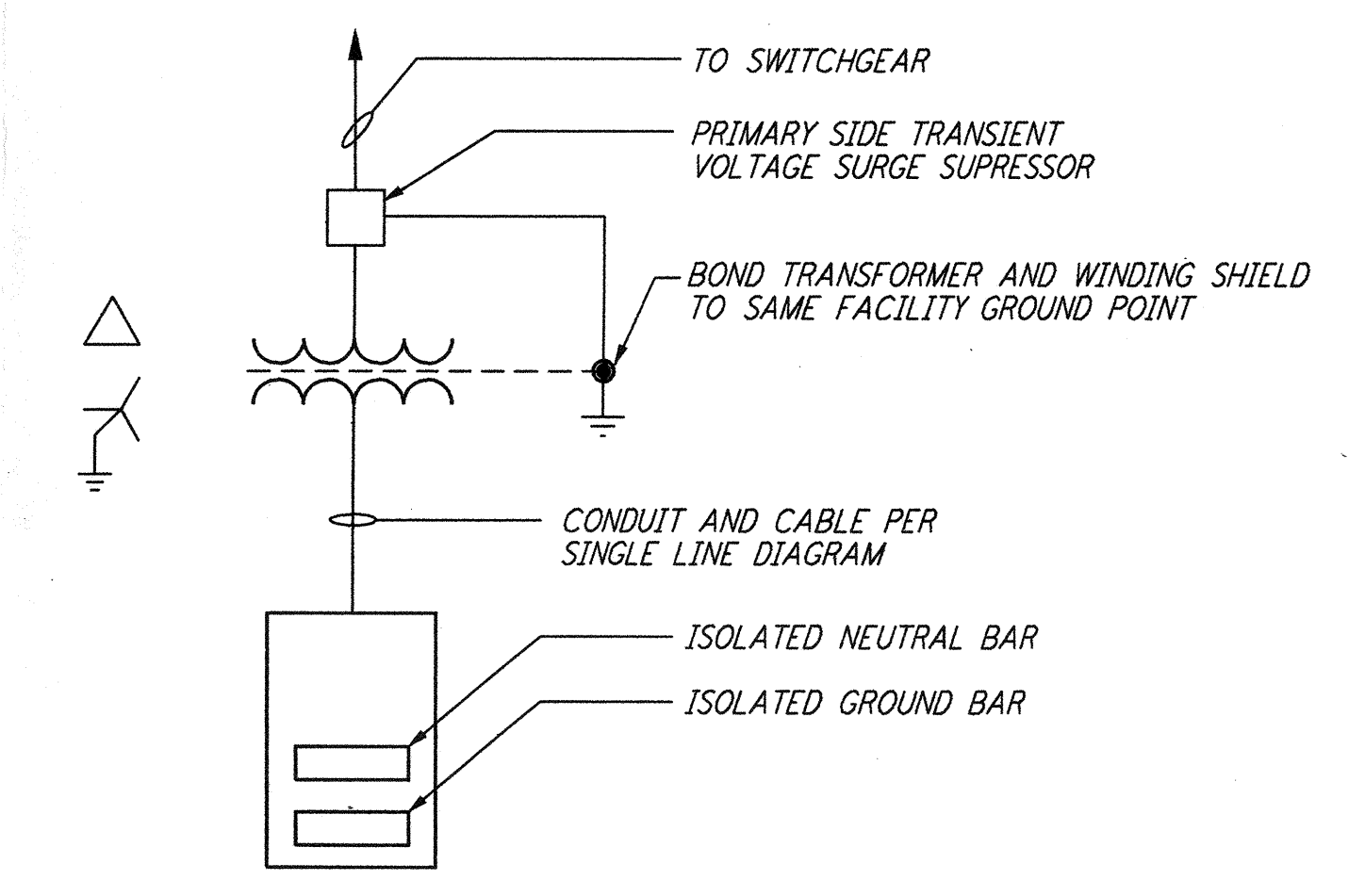


not be reproduced, copied, loaned, exhibited, or used in any other way, except by written consent from PARSONS to the borrower.

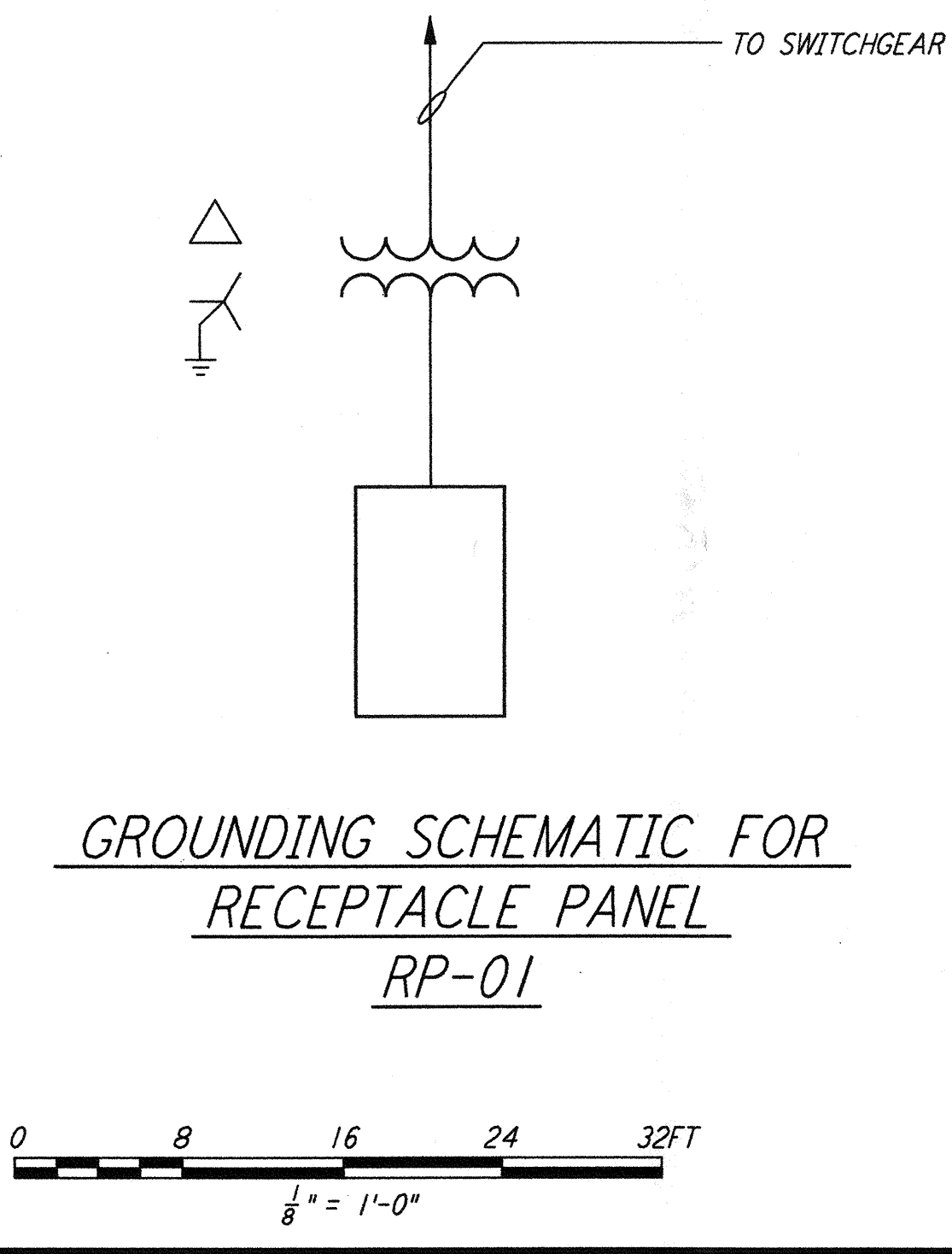
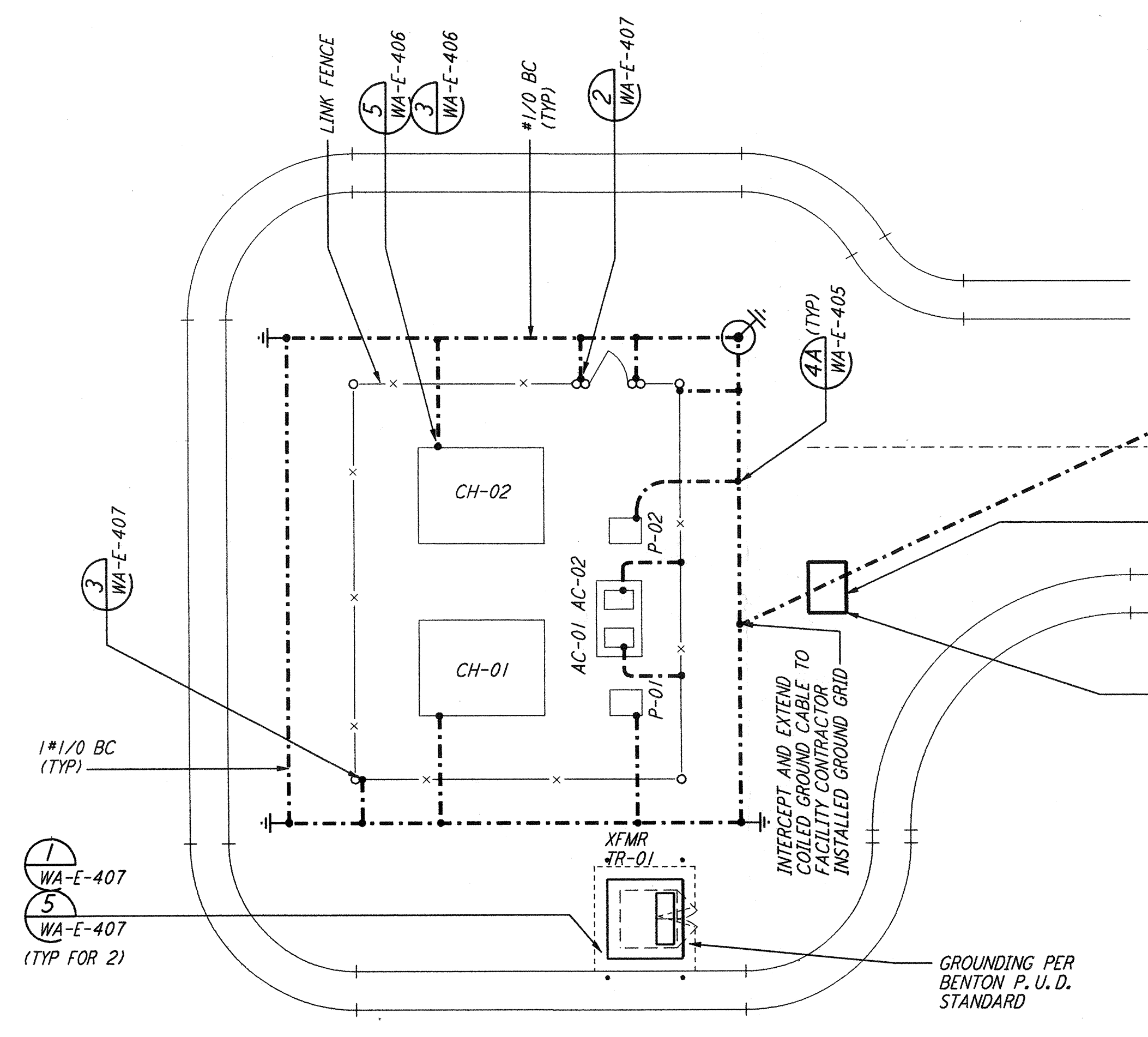
This document and the design it covers are the property of PARSONS. They are loaned only with the borrower's expressed written agreement that they will



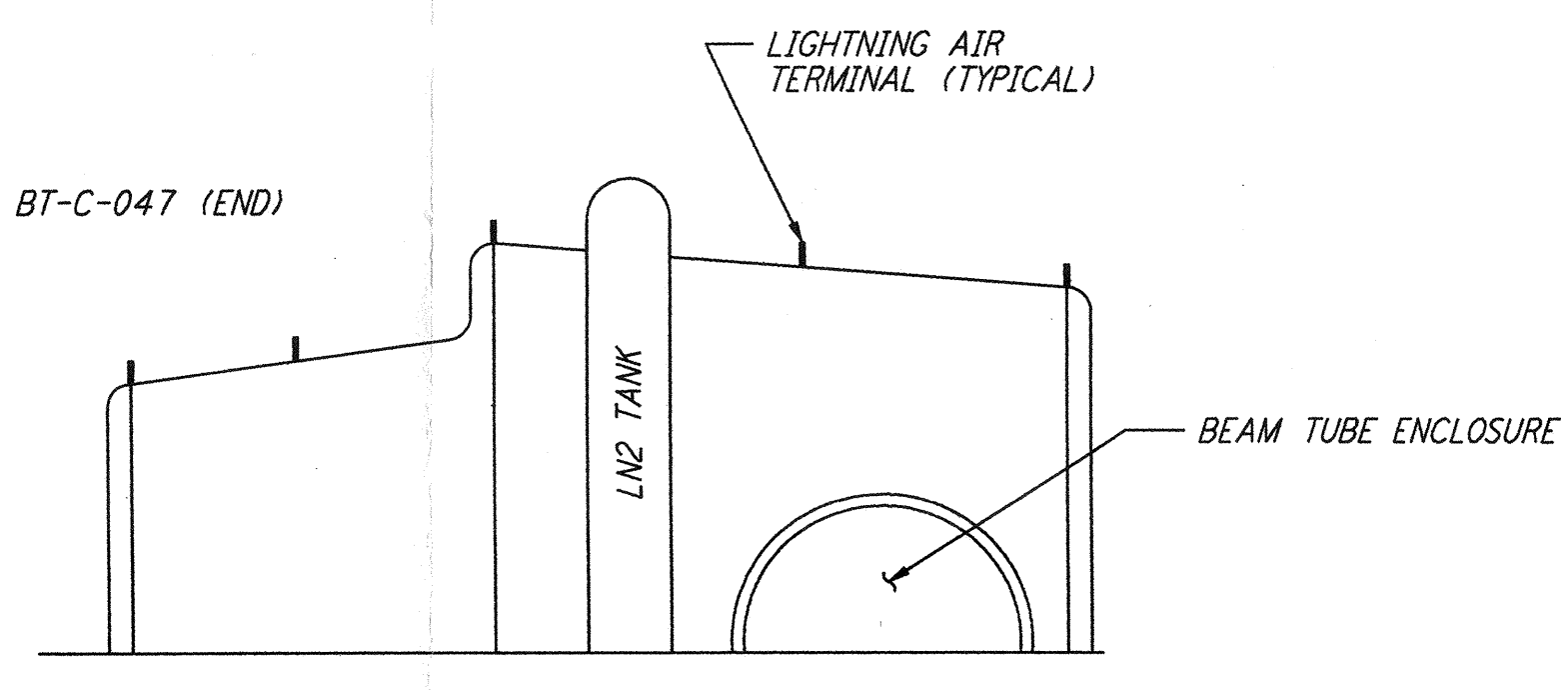
- NOTES:**
- FOR GENERAL NOTES SEE DWG. WA-E-103.
 - CONNECT GROUNDING CONDUCTOR TO REBAR AT BOTTOM OF FOUNDATION. REBAR SHALL BE AT LEAST 20 FEET LONG AND 1/2" DIAMETER.
 - GROUNDING MAT FOR PERSONNEL PROTECTION SHALL BE A PREFABRICATED 4'-0" X 6'-0" MAT WITH A 6" X 6" GRID, 40% CONDUCTIVITY COPPERWELD, WITH CENTER WIRE # 1/0 AWG, ERICO MFR. CABLE TO MESH TYPE PT, MOLD PTC-1G2C, WELD METAL #65.
 - GROUNDING MAT SHALL BE INSTALLED 12" DEEP MIN. ADJACENT TO HIGH VOLTAGE PRIMARY SIDE.
 - SEE CIVIL DRAWING WA-C-021 FOR ACTUAL LOCATION OF CHILLERS, PUMPS AND TRANSFORMER.
 - SEE SPECIFICATION SECTION 16670 FOR LIGHTNING PROTECTION MATERIAL.
 - GROUND CONNECTION TO STRUCTURAL STEEL SHALL BE EXOTHERMIC WELD TYPE, AND APPROPRIATE FOR THE CABLE AND STRUCTURAL STEEL.
 - COIL AND TAPE GROUND CONDUCTOR AT TANK FOUNDATION, FOR FUTURE CONNECTION BY TANK VENDOR.



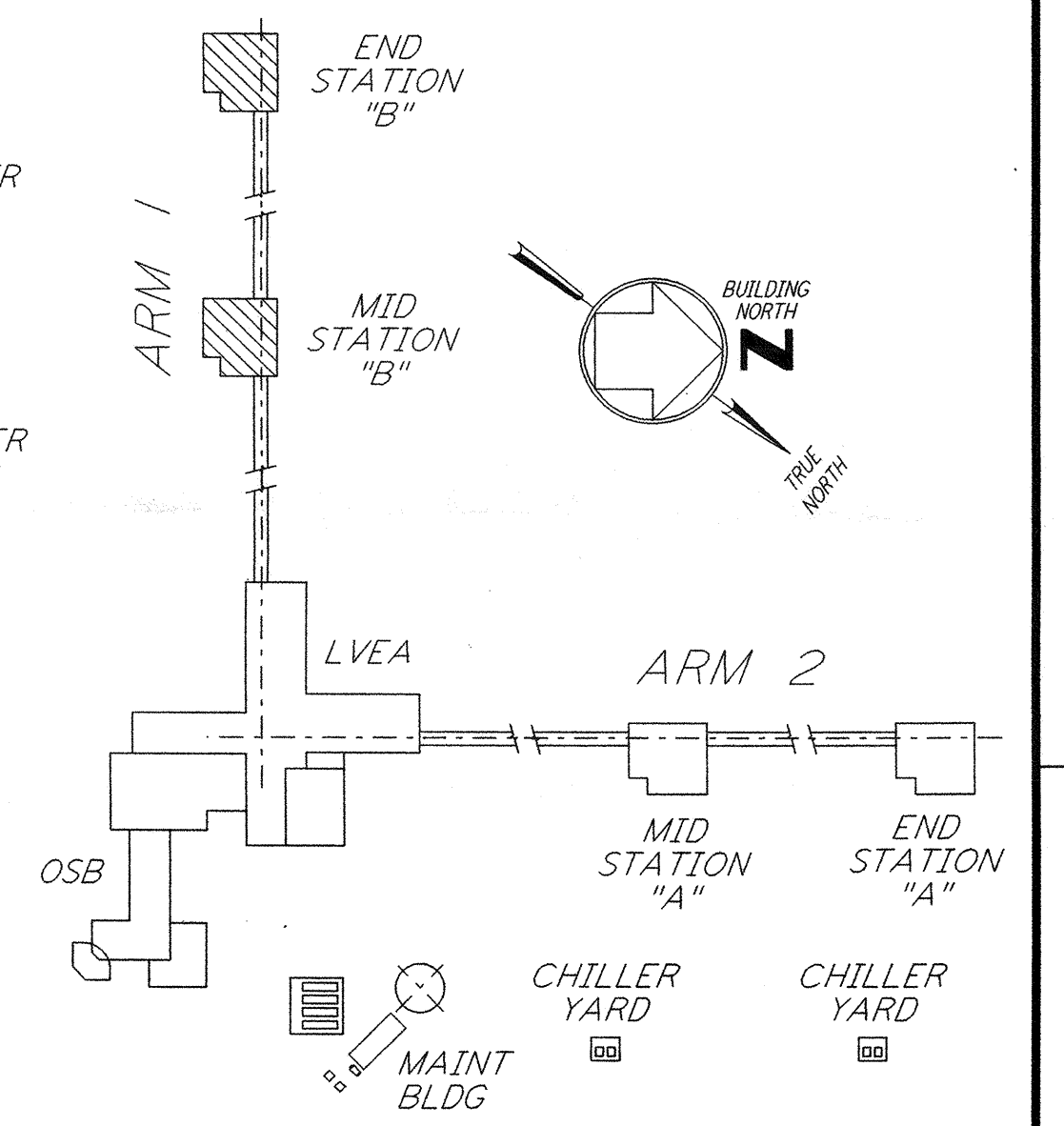
GROUNDING SCHEMATIC FOR CDSAC-01 PANEL



GROUNDING SCHEMATIC FOR RECEPTACLE PANEL RP-01



ELEVATION REF WA-E-212



KEY PLAN

LIGO-D960418-01-O

NO.	DATE	BY	CHKD	ENGR	PROJ	DESCRIPTION
1	6-15-98	J.G.				ISSUED FOR AS-BUILT

ISSUED FOR CONSTRUCTION
DRAWN M.M. 6-25-96
CHECKED J.K. 7-3-96
ENGINEER K.R. 7-3-96
PROJ M.D.W. 7-8-96

AS-BUILT DRAWINGS



100 WEST WALNUT STREET
PASADENA, CALIFORNIA



CALIFORNIA INSTITUTE OF TECHNOLOGY
MASSACHUSETTS INSTITUTE OF TECHNOLOGY

LASER INTERFEROMETER
GRAVITATIONAL-WAVE OBSERVATORY
SITE NO. 1 - HANFORD, WASHINGTON

TITLE	SCALE	CONTRACT NUMBER	PROJECT NUMBER
ELECTRICAL MID & END B STATIONS LIGHTNING & GROUNDING PLAN	AS NOTED	PP150969	8094
REVISIONS			
NO.			
DATE			
BY			
CHKD			
ENGR			
PROJ			
DESCRIPTION			
NO.			
DATE			
BY			
CHKD			
ENGR			
PROJ			
DESCRIPTION			

WA-E-212