

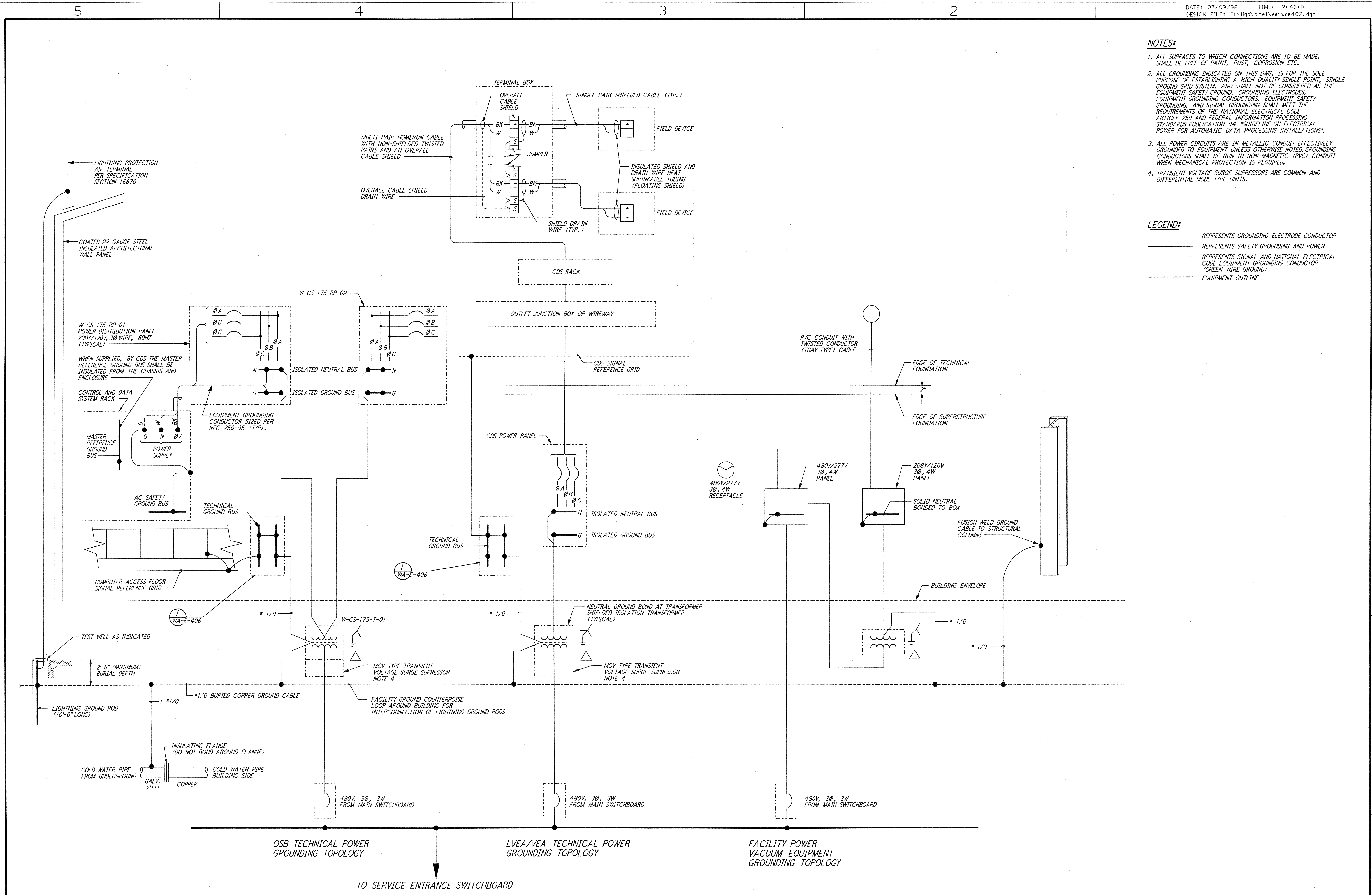
NOTES:

1. ALL SURFACES TO WHICH CONNECTIONS ARE TO BE MADE, SHALL BE FREE OF PAINT, RUST, CORROSION ETC.
2. ALL GROUNDING INDICATED ON THIS DWG, IS FOR THE SOLE PURPOSE OF ESTABLISHING A HIGH QUALITY SINGLE POINT, SINGLE GROUND GRID SYSTEM, AND SHALL NOT BE CONSIDERED AS THE EQUIPMENT SAFETY GROUND. GROUNDING ELECTRODES, EQUIPMENT GROUNDING CONDUCTORS, EQUIPMENT SAFETY GROUNDING, AND SIGNAL GROUNDING SHALL MEET THE REQUIREMENTS OF THE NATIONAL ELECTRICAL CODE ARTICLE 250 AND FEDERAL INFORMATION PROCESSING STANDARDS PUBLICATION 94 "GUIDELINE ON ELECTRICAL POWER FOR AUTOMATIC DATA PROCESSING INSTALLATIONS".
3. ALL POWER CIRCUITS ARE IN METALLIC CONDUIT EFFECTIVELY GROUND TO EQUIPMENT UNLESS OTHERWISE NOTED. GROUNDING CONDUCTORS SHALL BE RUN IN NON-MAGNETIC (PVC) CONDUIT WHEN MECHANICAL PROTECTION IS REQUIRED.
4. TRANSIENT VOLTAGE SURGE SUPPRESSORS ARE COMMON AND DIFFERENTIAL MODE TYPE UNITS.

LEGEND:

- REPRESENTS GROUNDING ELECTRODE CONDUCTOR
- REPRESENTS SAFETY GROUNDING AND POWER
- REPRESENTS SIGNAL AND NATIONAL ELECTRICAL CODE EQUIPMENT GROUNDING CONDUCTOR (GREEN WIRE GROUND)
- EQUIPMENT OUTLINE

This document and the design it covers are the property of PARSONS. They are loaned only with the borrower's expressed written agreement that they will not be reproduced, copied, loaned, exhibited, or used in any other way, except by written consent from PARSONS to the borrower.



LIGO-D960423-01-O

LASER INTERFEROMETER
 GRAVITATIONAL-WAVE OBSERVATORY
 SITE NO. 1 - HANFORD, WASHINGTON

TITLE	SCALE	CONTRACT NUMBER	PROJECT NUMBER
ELECTRICAL CORNER STATION GROUNDING SCHEMATIC	NONE	PP150969	8094
SHEET NUMBER			REVISIONS
WA-E-402			▲

NO.	DATE	BY	CHKD	ENGR	PROJ	DESCRIPTION
1	6-15-98	J. G.	JG	JG	PP	ISSUED FOR AS-BUILT

ISSUED FOR CONSTRUCTION
 DRAWN M. M. 6-25-96
 CHECKED J. K. 7-3-96
 ENGINEER K. R. 7-3-96
 PROJ M. D. W. 7-8-96

AS-BUILT DRAWINGS

PARSONS
 100 WEST WALNUT STREET
 PASADENA, CALIFORNIA

LIGO
 CALIFORNIA INSTITUTE OF TECHNOLOGY
 MASSACHUSETTS INSTITUTE OF TECHNOLOGY